

Overview of the results of the household CHR26 Single woman under 30 years without work 0

Calculation Time

Freitag, 1. Januar 2016 - Sonntag, 1. Januar 2017

Energy Intensity: Random

Seed 1708

LoadProfileGenerator 5.8.0.16019

by Noah Pflugradt

<http://www.loadprofilegenerator.de>

Rendering date:16.12.2016 09:16:45

Table of Contents

Totals.....	3
Persons.....	5
Activity Frequency Charts.....	6
Activity Distribution per Person.....	7
Time Use per Person per Affordance Per Person.....	8
Energy use per person per affordance.....	10
Time Use per Person Per Affordance according to different category definitions.....	12
Overview of the actions of each member of the household.....	14
Overview of the time of the use per load type per device.....	15
Energy/Resource use distribution per load type per affordance.....	17
Energy use for each load type for each device.....	22
Duration curve for each device for each load type.....	26
Duration curve for each load type.....	28
Grouped energy use for each load type for each device.....	30
Example of the device profiles for each load type.....	34
Overview of the time and power of the use per load type per device.....	48
Energy use per load type during different seasons, split by weekday/saturday/sunday.....	50
Location Distribution per Person.....	52
Actions.csv.....	53
Sum Profiles.....	54
Time Profiles.....	58
Variables.....	59

Totals

Totals for each Loadtype

Load Type	Value	Unit
Cold Water	12421.53	L
Electricity	1833.57	kWh
Warm Water	36882.70	L

Totals for each Loadtype per Day

Load Type	Value	Unit
Cold Water	33.94	L
Electricity	5.01	kWh
Warm Water	100.77	L

Minimum and Maximum for each Loadtype

Household	Minimum	Maximum	Unit
Cold Water	0.00	9.41	L/Min
Electricity	-168.51	6402.96	Watt
Warm Water	0.00	12.16	L/Min

Totals for each Loadtype per Person

Load Type	Value	Unit
Cold Water	12421.53	L
Electricity	1833.57	kWh

Warm Water	36882.70	L
------------	----------	---

Totals for each Loadtype per Person per Day

Load Type	Value	Unit
Cold Water	33.94	L
Electricity	5.01	kWh
Warm Water	100.77	L

Persons

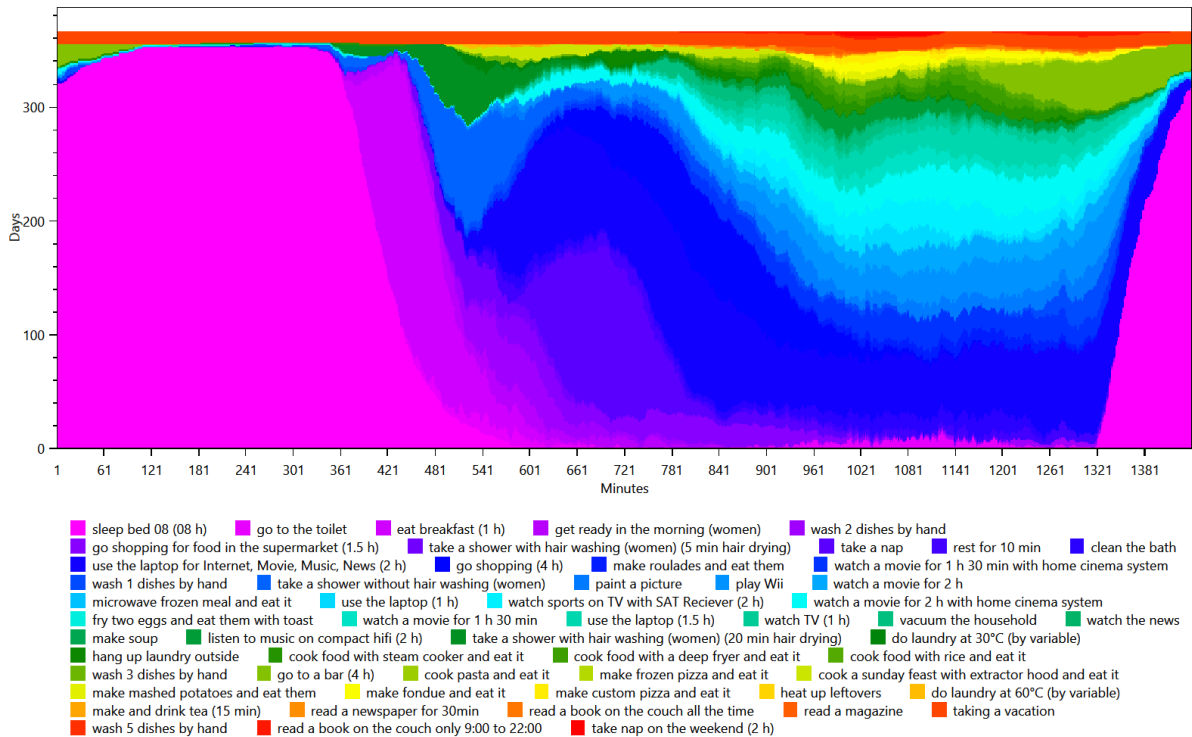
- HH0
 - CHR26 Florence (27/Female)(27/Female)

Activity Frequency Charts

This is made from the files starting with: ActivityFrequenciesPerMinute

These charts show an ordered distribution of times of the activities of each person. This helps with judging quickly if a person is sleeping correctly and if they are going to work regularly.

HH0 - CHR26 Florence (27 Female)

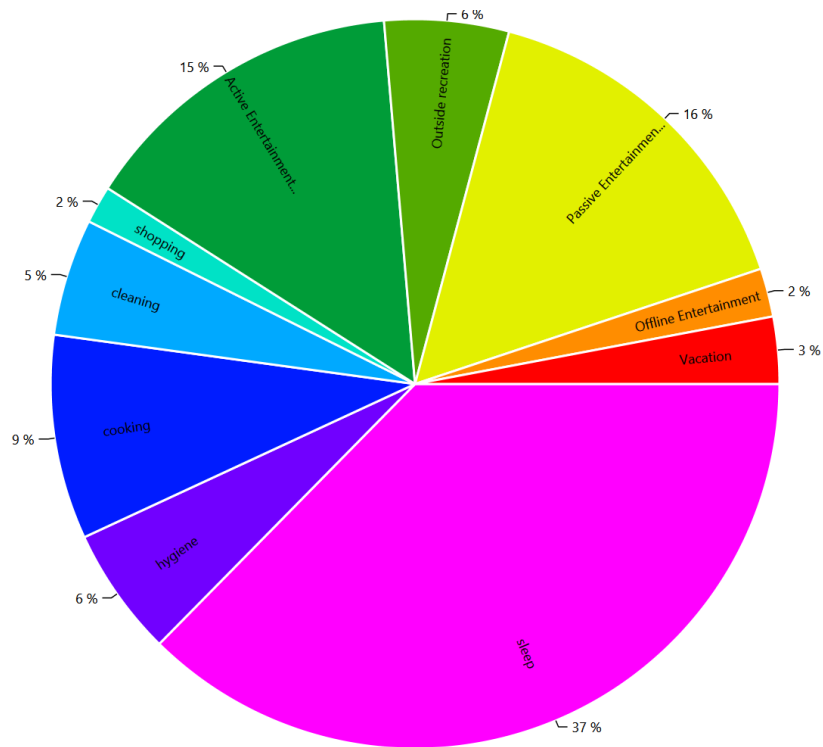


Activity Distribution per Person

This is made from the files starting with: ActivityPercentage

This shows the distribution of the activities, grouped by the affordance AffordanceToCategories.

HH0 - CHR26 Florence (27 Female)

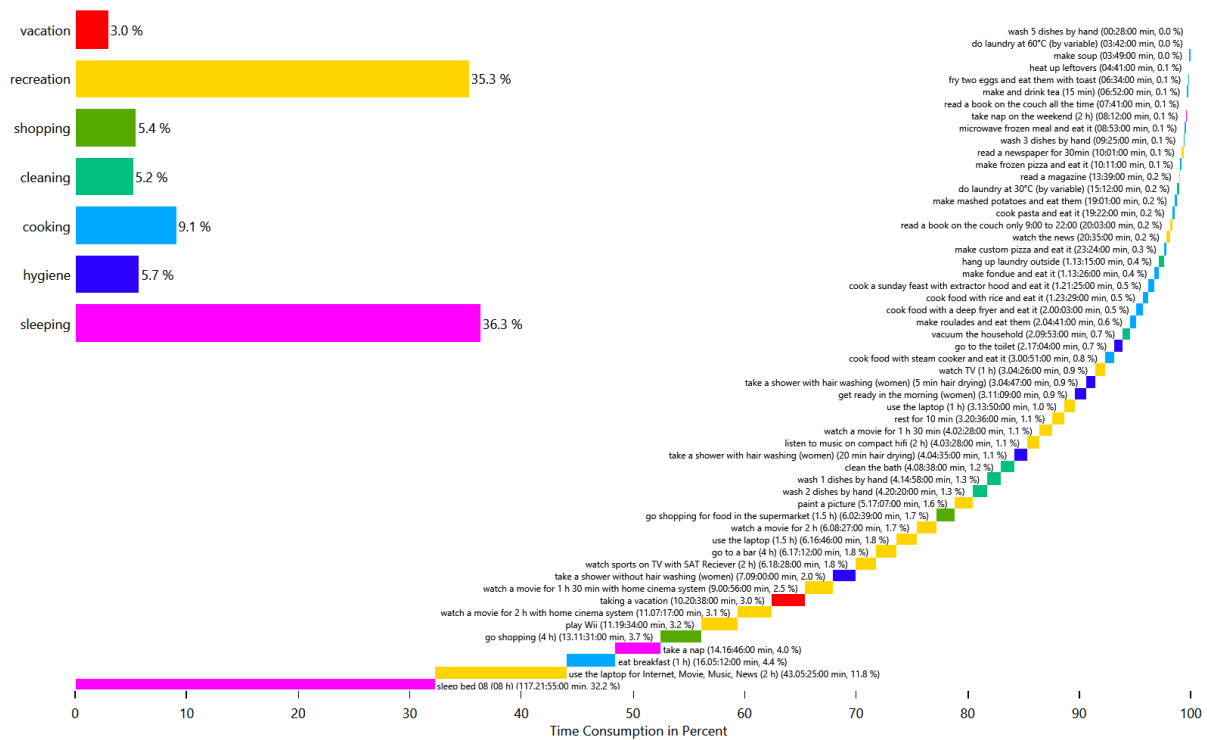


Time Use per Person per Affordance Per Person

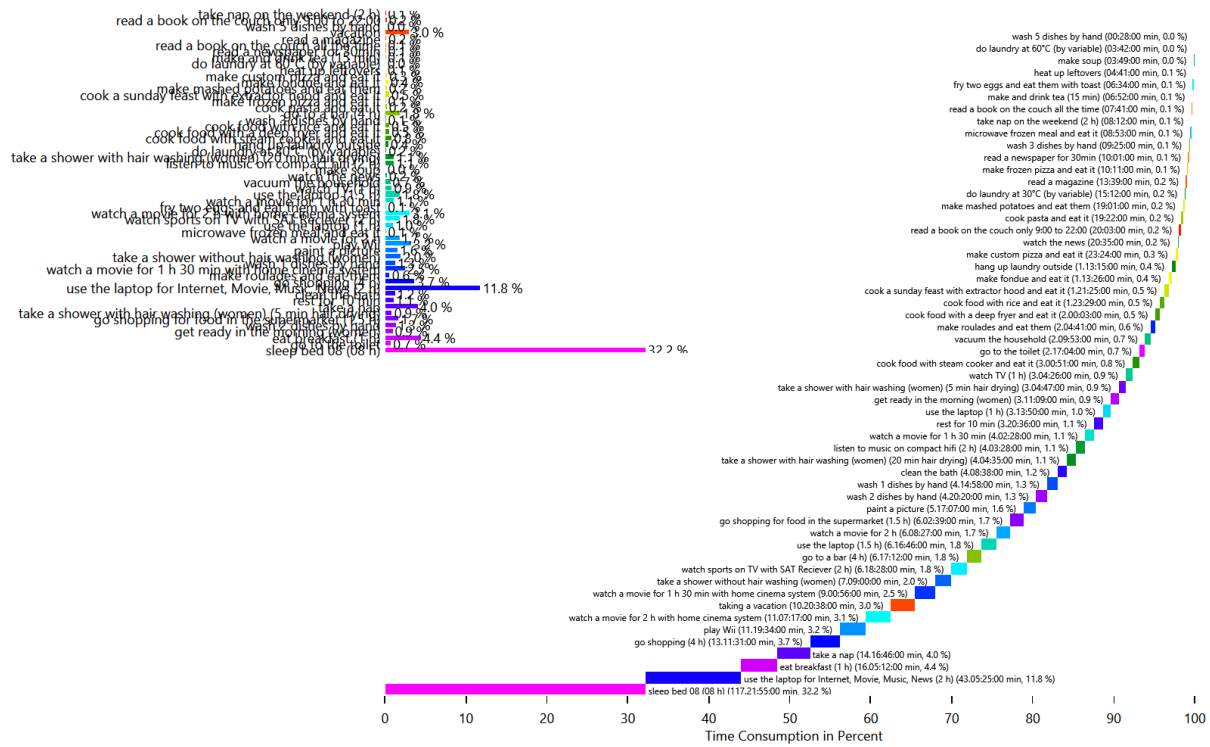
This is made from the files starting with: AffordanceTimeUse

These charts show how the people in the household use their time. This shows the individual affordances to help find problems in the household definition.

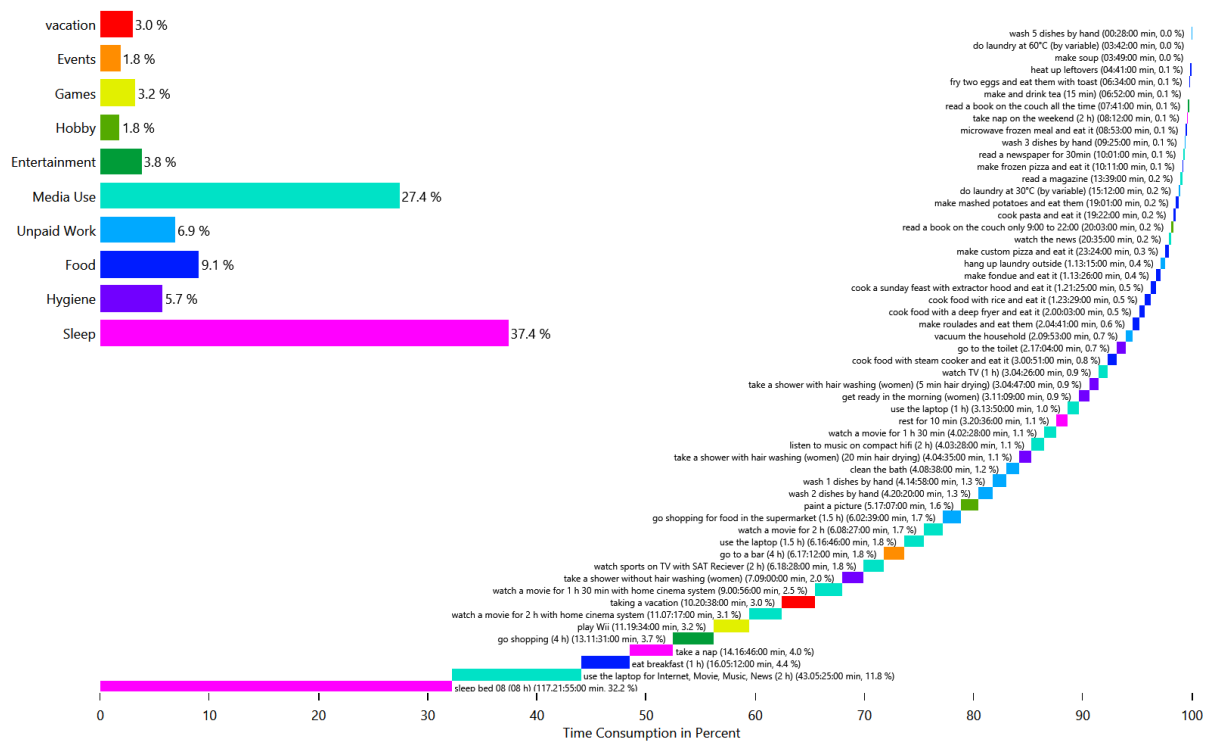
HH0 - CHR26 Florence (27 Female)



HH0 - CHR26 Florence (27 Female)



HH0 - CHR26 Florence (27 Female)

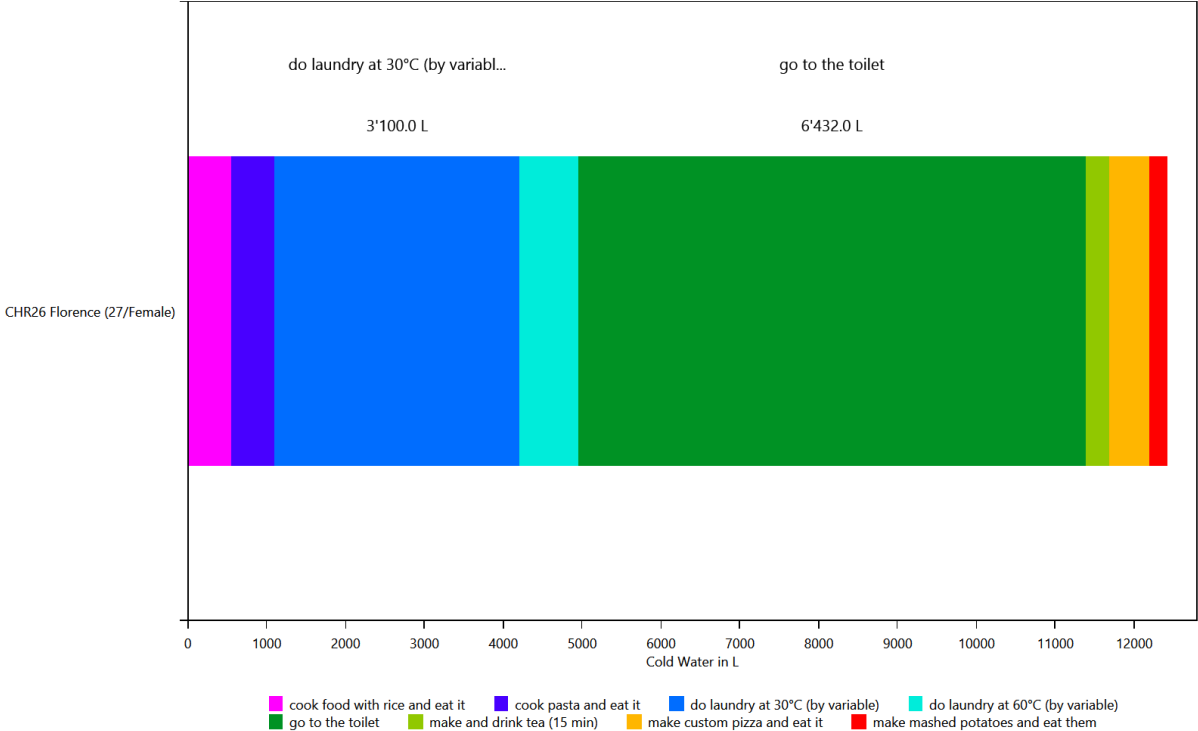


Energy use per person per affordance

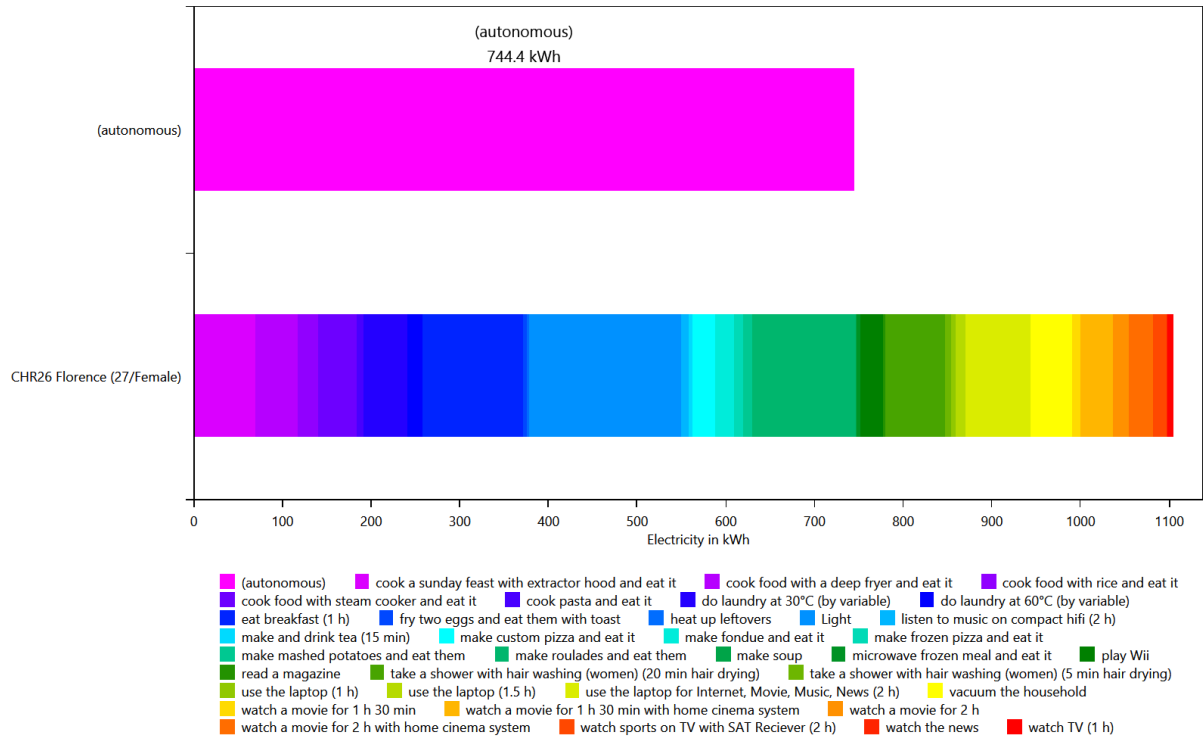
This is made from the files starting with: **AffordanceEnergyUsePerPerson**

This shows the distribution of the energy/ressource use to each affordance by load type and by person. This helps with figuring out if a person is using too much electricity.

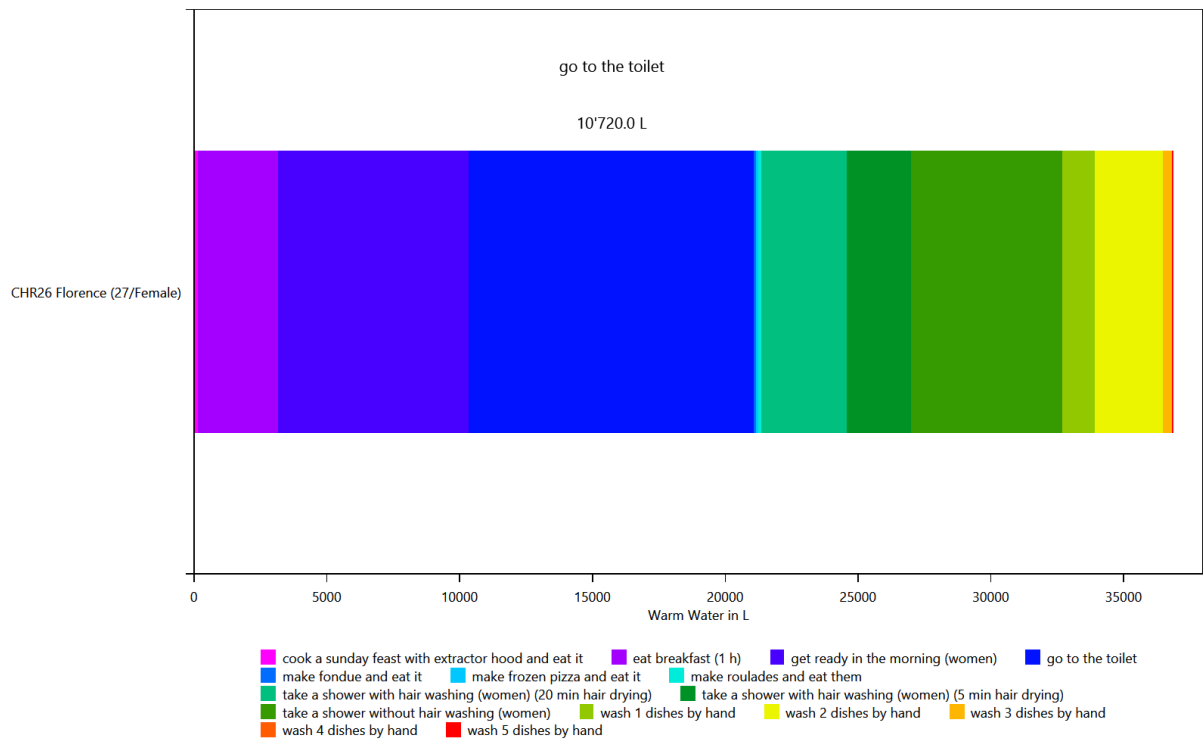
HH0 - Cold Water



HH0 - Electricity



HH0 - Warm Water

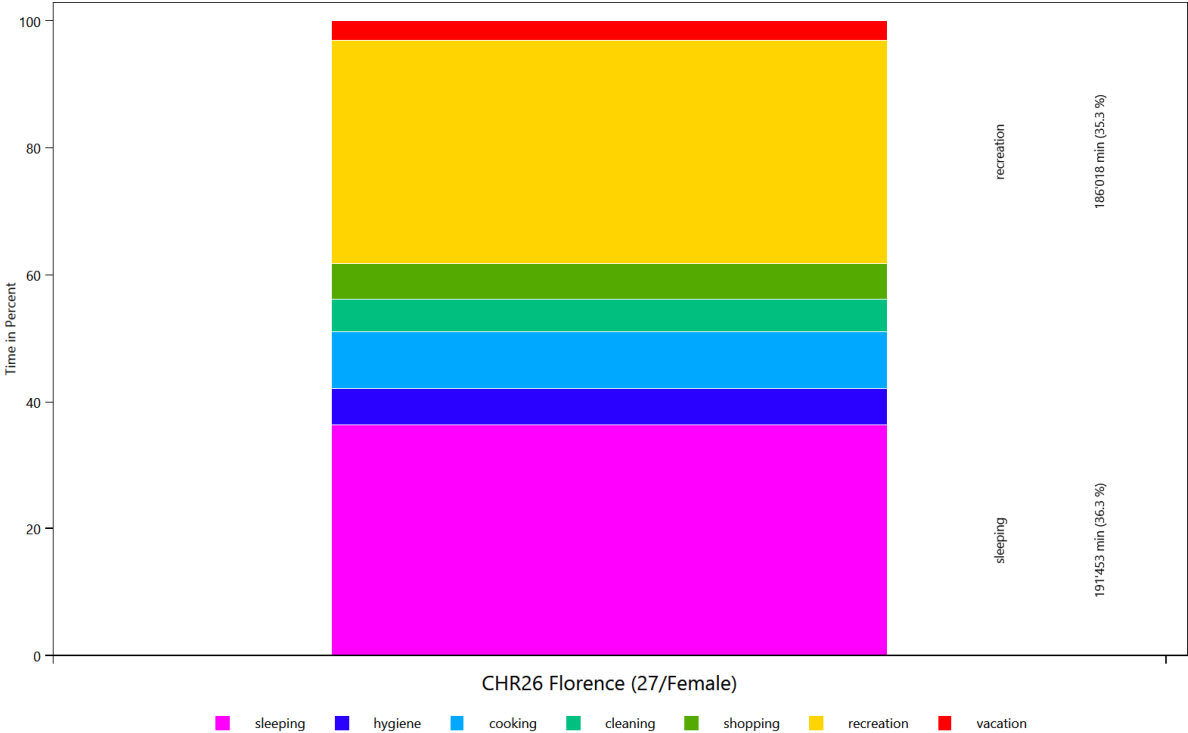


Time Use per Person Per Affordance according to different category definitions

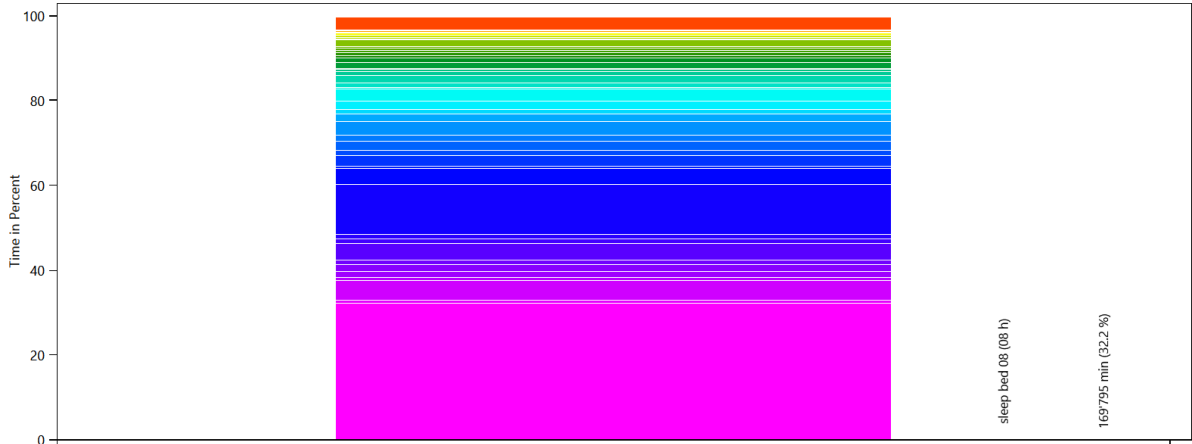
This is made from the files starting with: AffordanceTaggingSet

These charts show how the people in the household use their time. To help with analysis, the activities can be grouped by various criteria. This is done with the affordance tagging sets in the LPG.

Basic Tagging - HH0



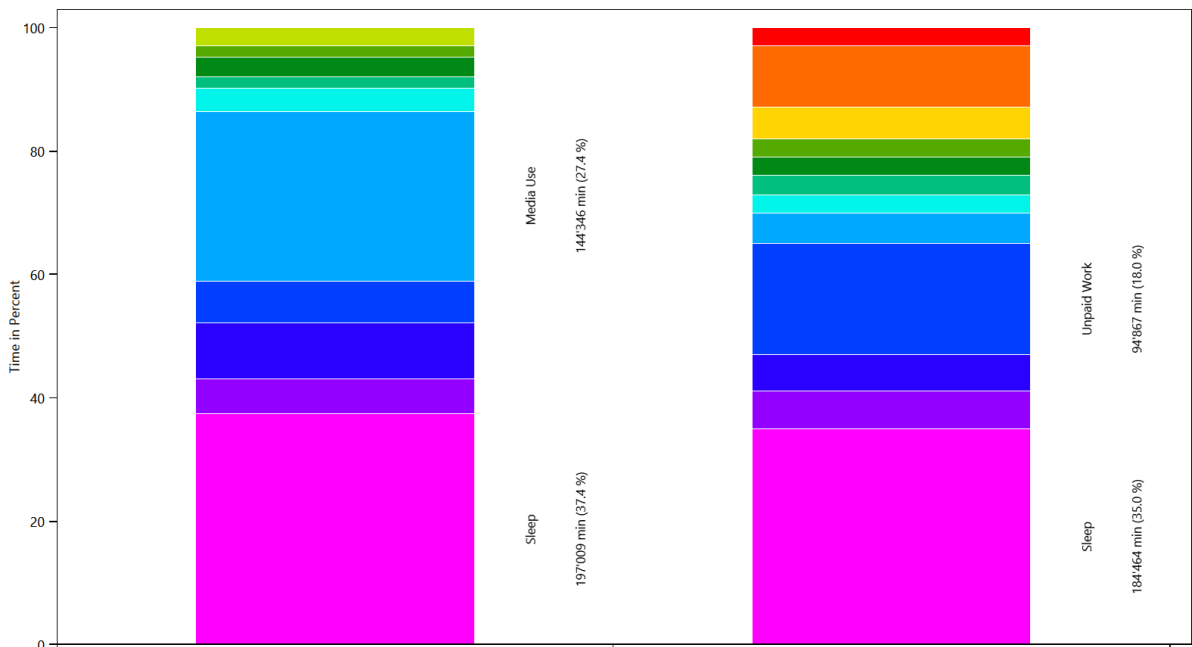
Tagging Set For Planning - HHO



CHR26 Florence (27/Female)

- sleep bed 08 (08 h)
- go to the toilet
- eat breakfast (1 h)
- get ready in the morning (women)
- wash 2 dishes by hand
- go shopping for food in the supermarket (1.5 h)
- take a shower with hair washing (women) (5 min hair drying)
- take a nap
- rest for 10 min
- clean the bath
- use the laptop for Internet, Movie, Music, News (2 h)
- go shopping (4 h)
- make roulades and eat them
- watch a movie for 1 h 30 min with home cinema system
- wash 1 dishes by hand
- take a shower without hair washing (women)
- paint a picture
- play Wii
- watch a movie for 2 h
- microwave frozen meal and eat it
- use the laptop (1 h)
- watch sports on TV with SAT Receiver (2 h)
- watch a movie for 1 h 30 min
- use the laptop (1.5 h)
- watch TV (1 h)
- vacuum the household
- watch the news
- make soup
- listen to music on compact hifi (2 h)
- take a shower with hair washing (women) (20 min hair drying)
- do laundry at 30°C (by variable)
- hang up laundry outside
- cook food with steam cooker and eat it
- cook food with a deep fryer and eat it
- cook food with rice and eat it
- wash 3 dishes by hand
- go to a bar (4 h)
- cook pasta and eat it
- make frozen pizza and eat it
- cook a sunday feast with extractor hood and eat it
- make mashed potatoes and eat them
- make fondue and eat it
- make custom pizza and eat it
- heat up leftovers
- do laundry at 60°C (by variable)
- make and drink tea (15 min)
- read a newspaper for 30min
- read a book on the couch all the time
- read a magazine
- vacation
- wash 5 dishes by hand
- read a book on the couch only 9:00 to 22:00
- take nap on the weekend (2 h)

Wo bleibt die Zeit - HHO



CHR26 Florence (27/Female)

Reference

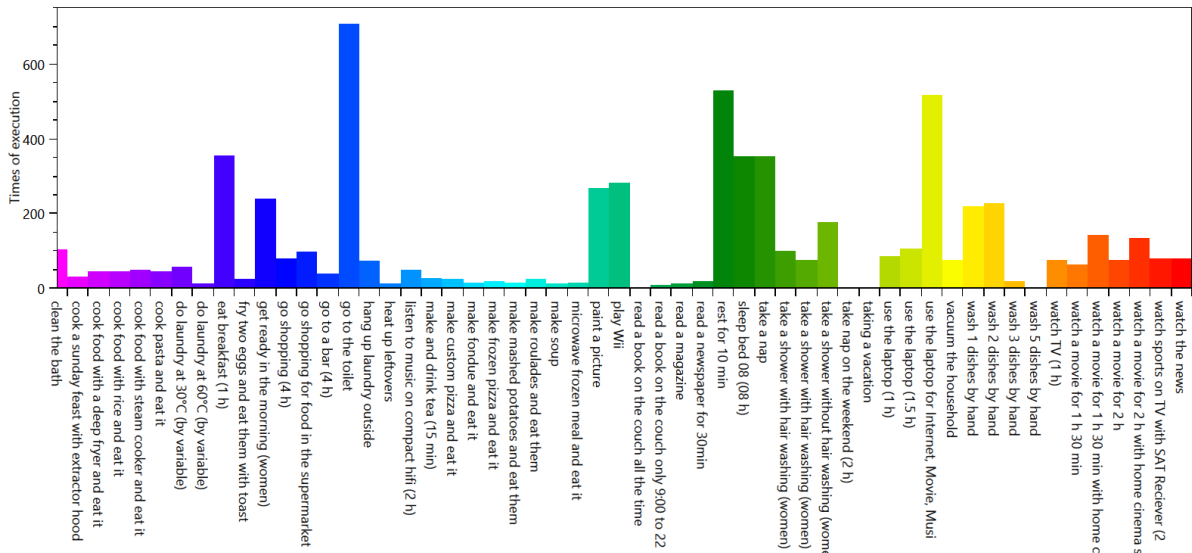
- Sleep
- Hygiene
- Food
- Unpaid Work
- Media Use
- Entertainment
- Hobby
- Games
- Events
- vacation
- Sport
- Work / School
- Contacts

Overview of the actions of each member of the household

This is made from the files starting with: ExecutedActionsOverviewCount

These charts show how often each affordance was executed.

HH0 - CHR26 Florence (27 Female)

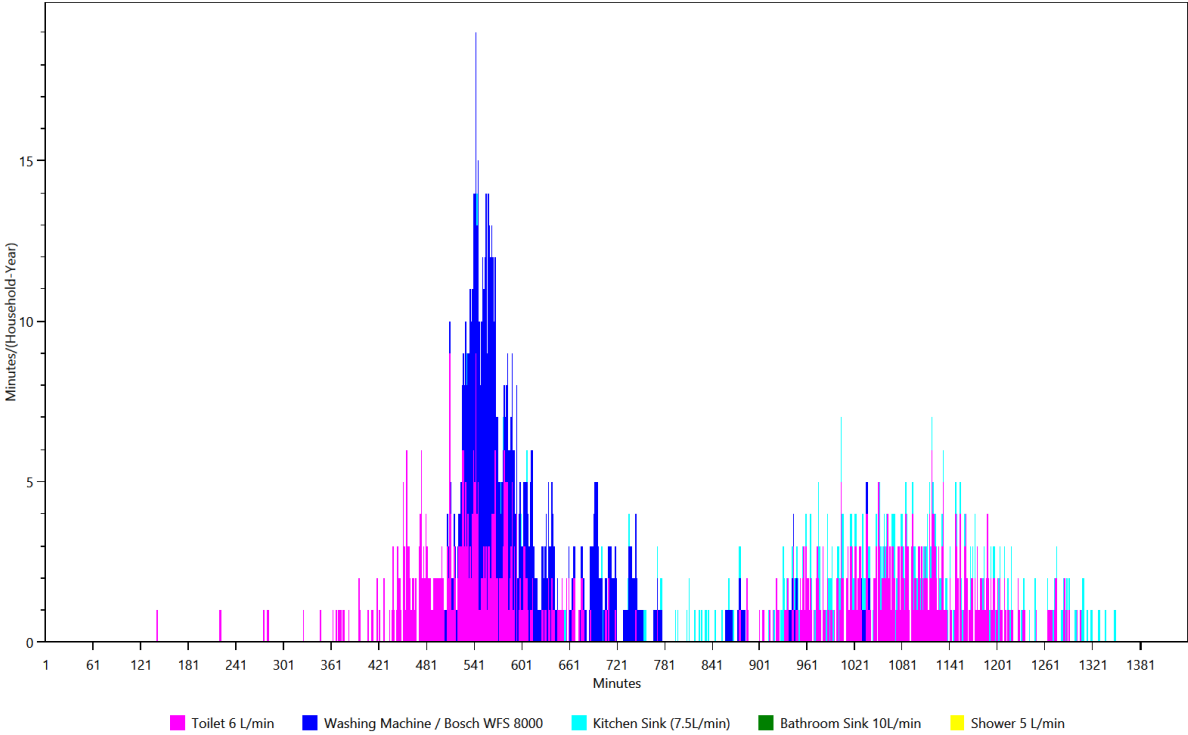


Overview of the time of the use per load type per device

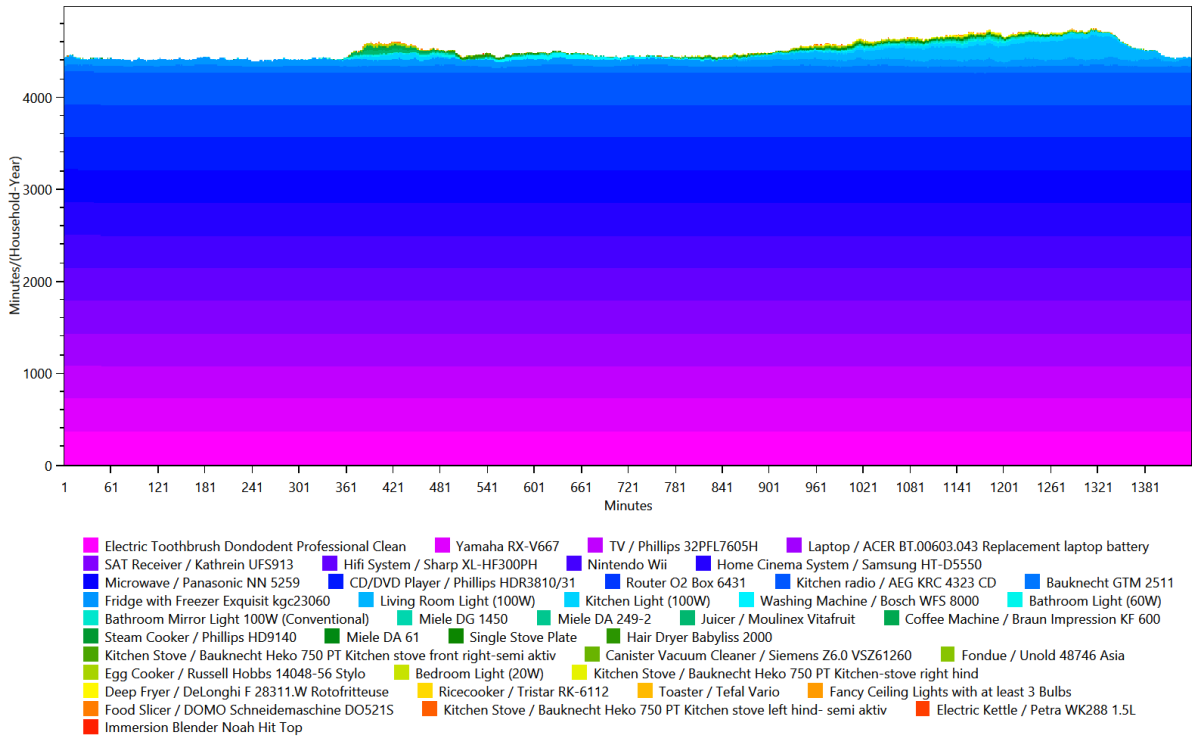
This is made from the files starting with: TimeOfUseEnergyProfiles

The time of use energy profiles shows when each device was used.

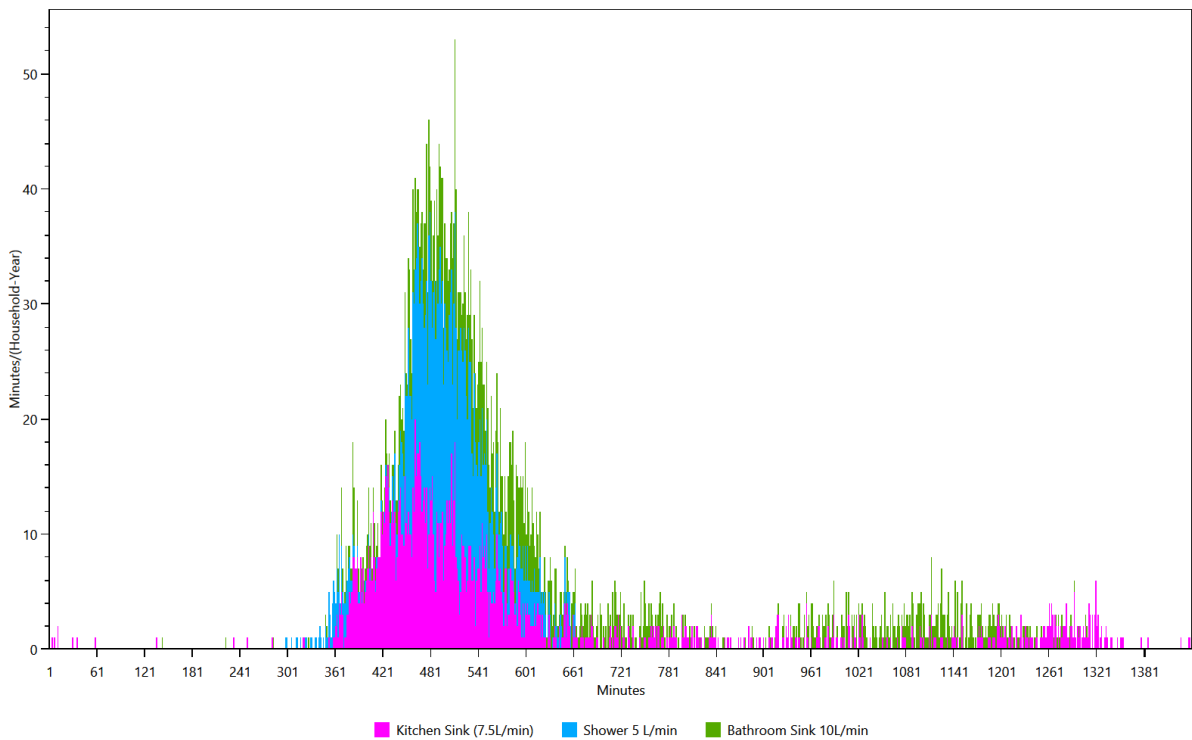
Cold Water



Electricity



Warm Water

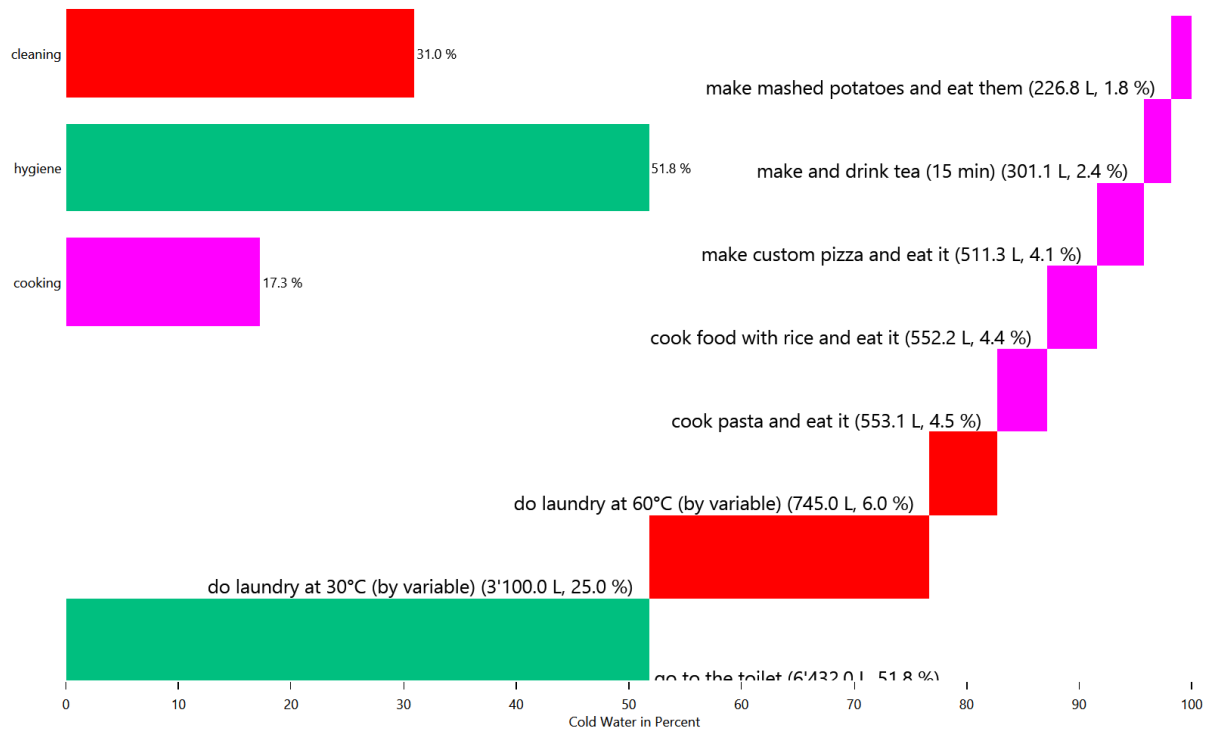


Energy/Resource use distribution per load type per affordance

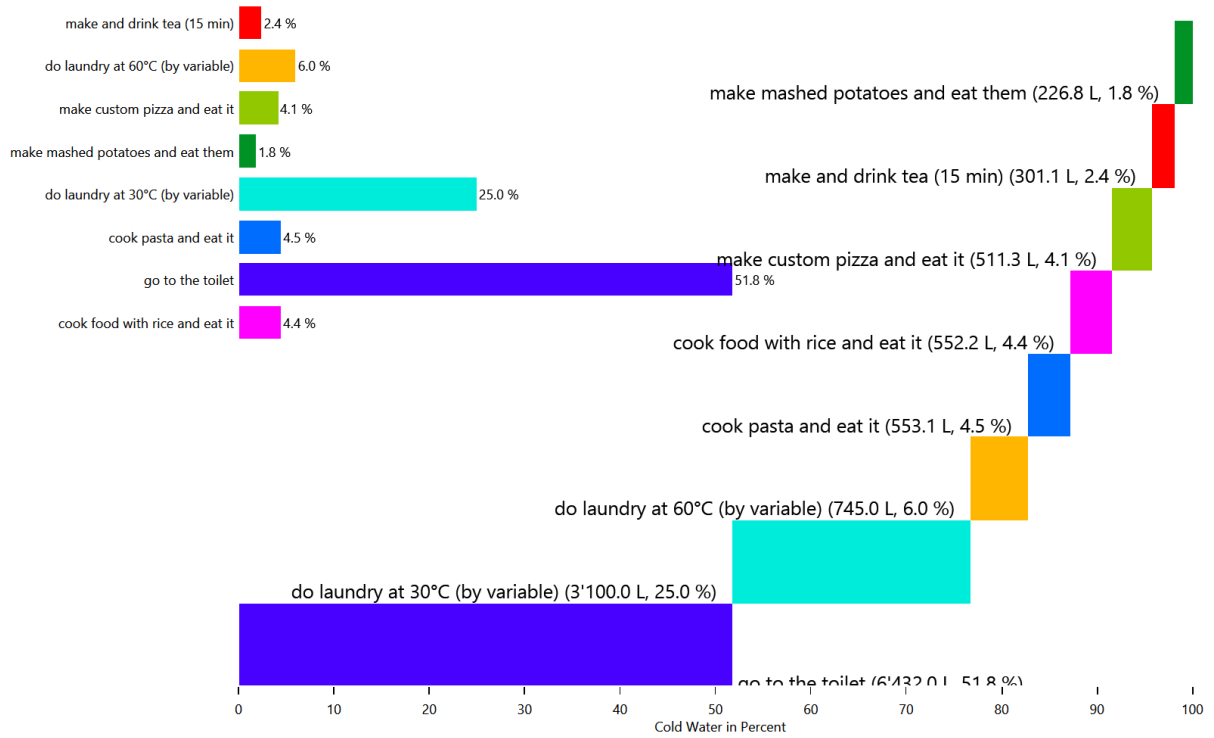
This is made from the files starting with: AffordanceEnergyUse

This shows the distribution of the energy/resource use to each affordance by load type.

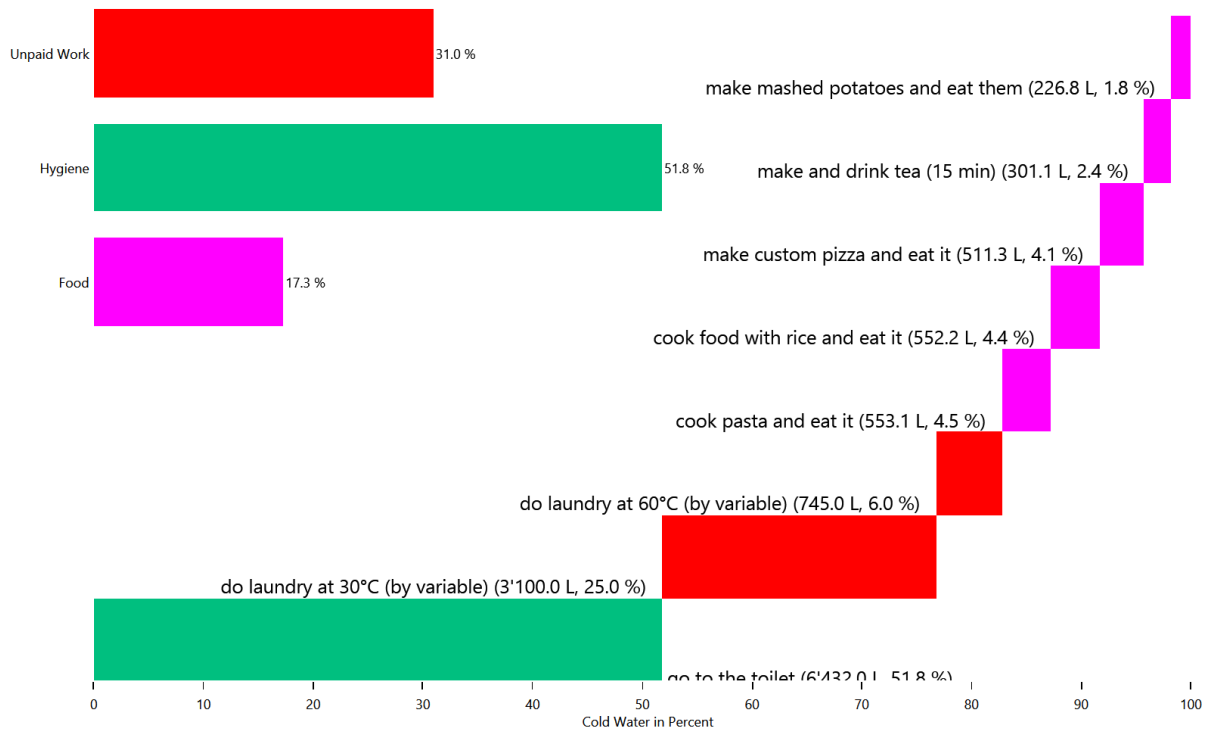
HH0 - Cold Water



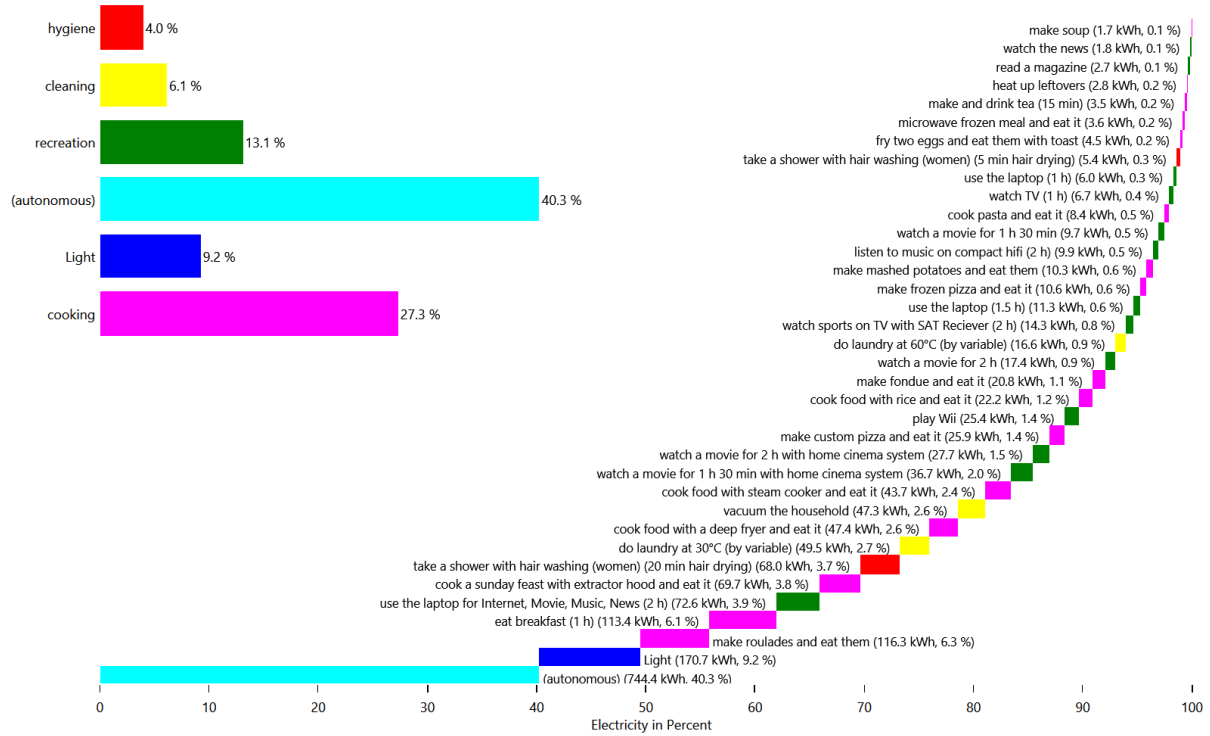
HH0 - Cold Water



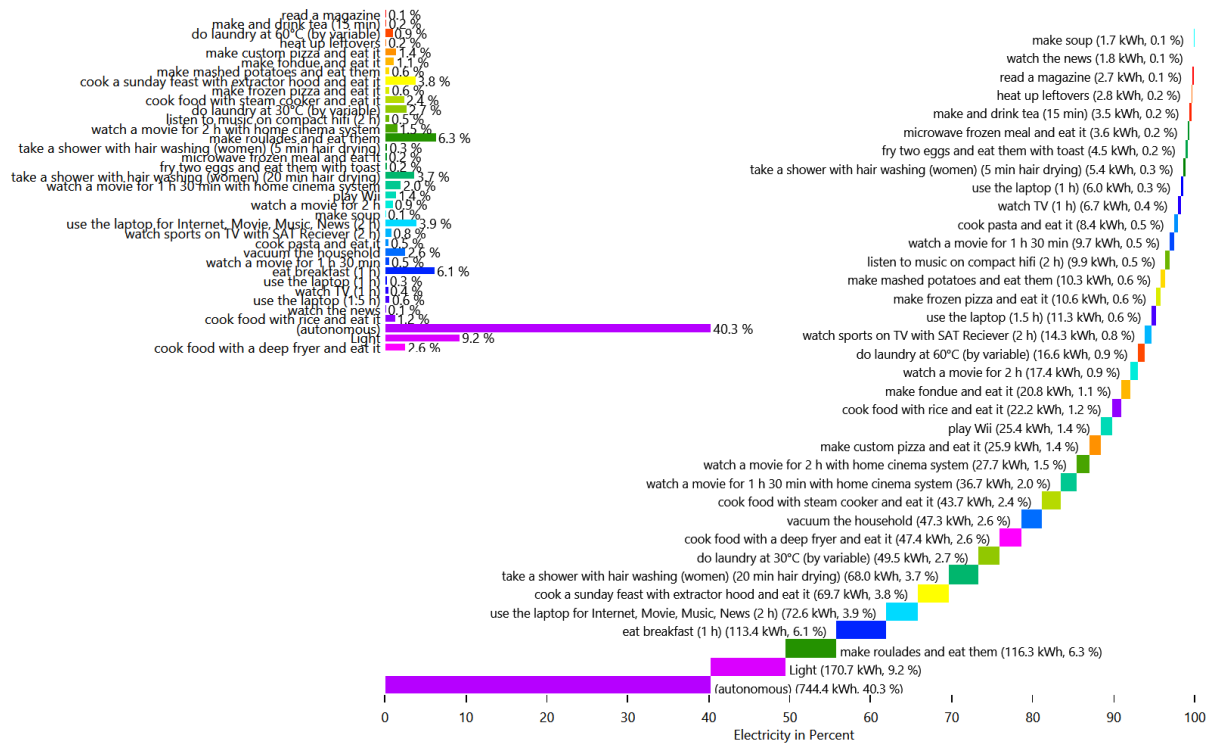
HH0 - Cold Water



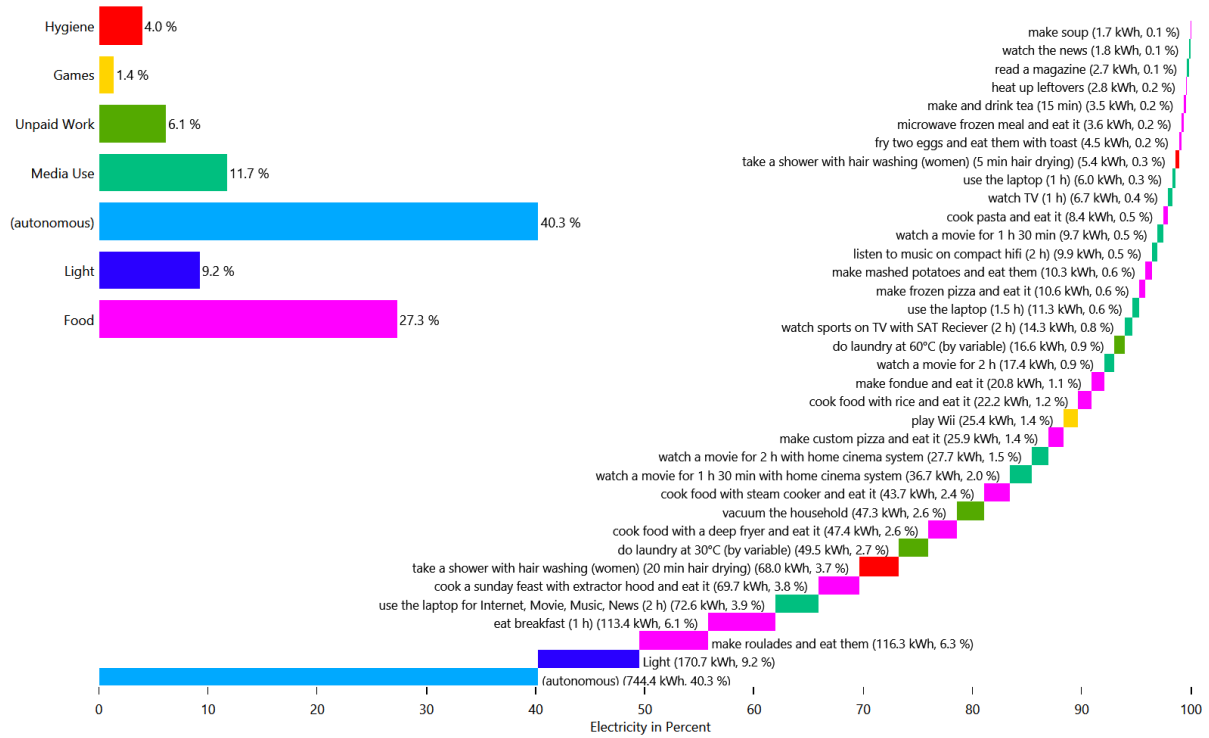
HH0 - Electricity



HH0 - Electricity



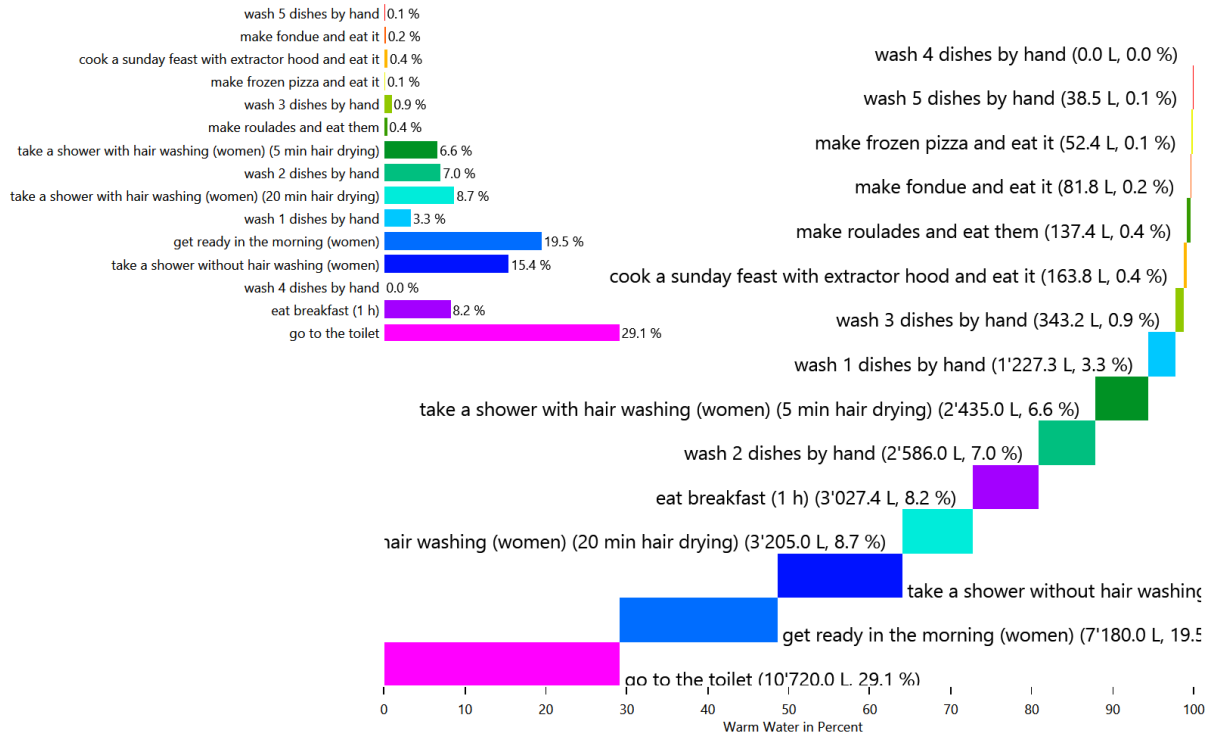
HH0 - Electricity



HH0 - Warm Water



HH0 - Warm Water



HH0 - Warm Water

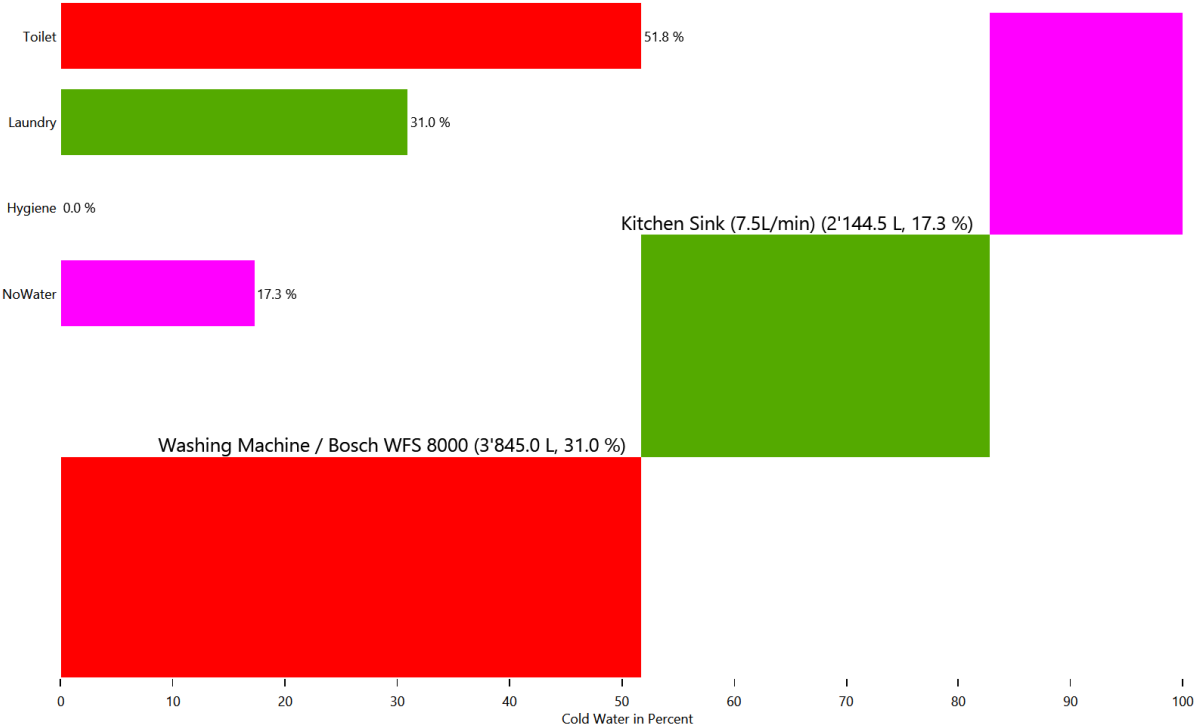


Energy use for each load type for each device

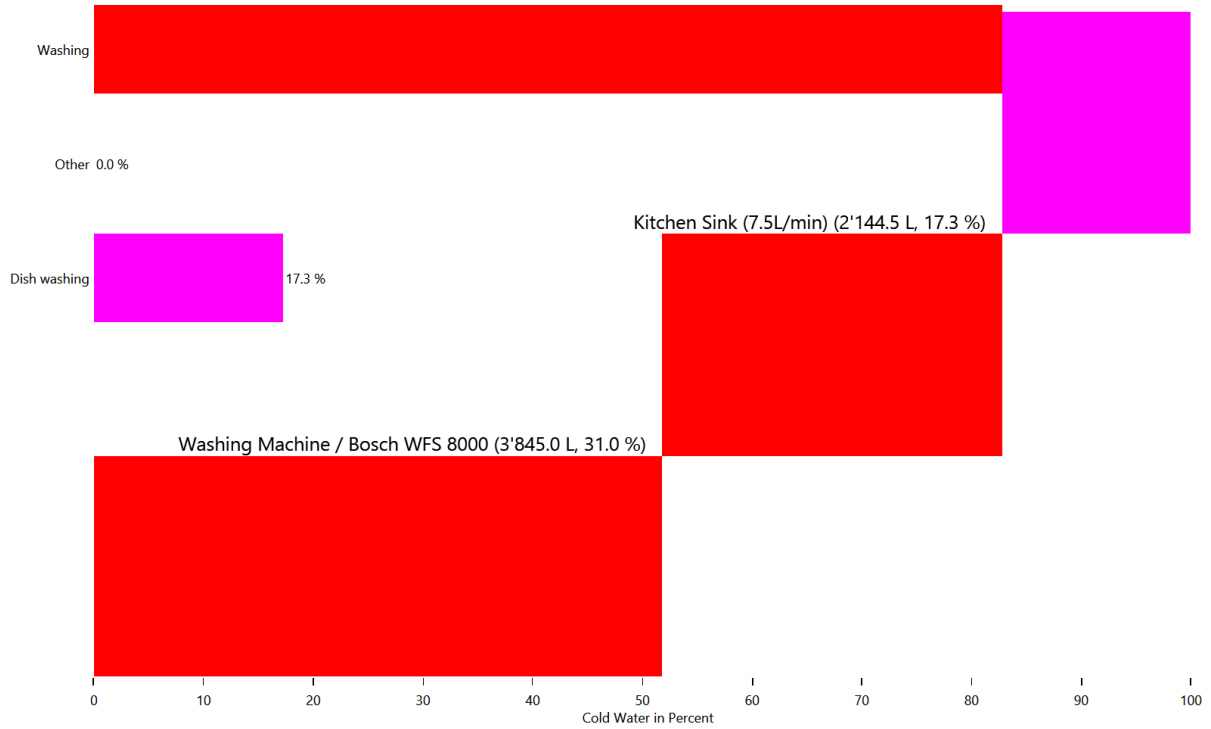
This is made from the files starting with: DeviceSums

These pie charts show the energy use for each individual device in each load type.

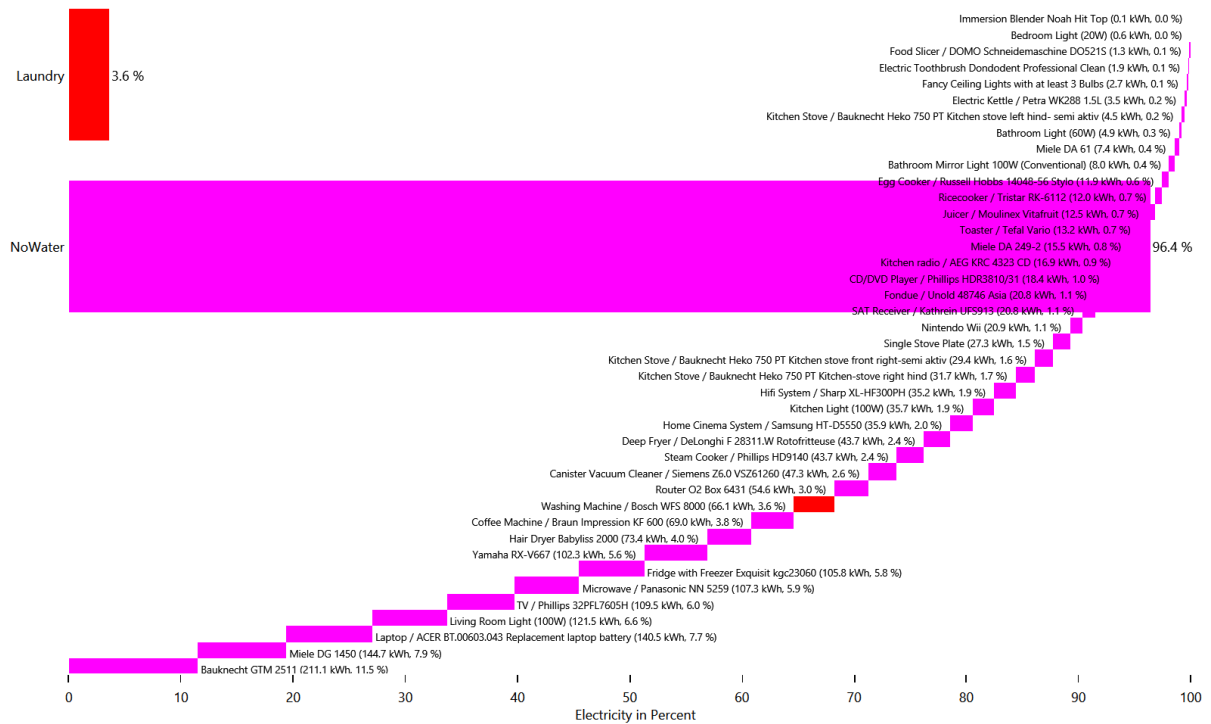
Cold Water



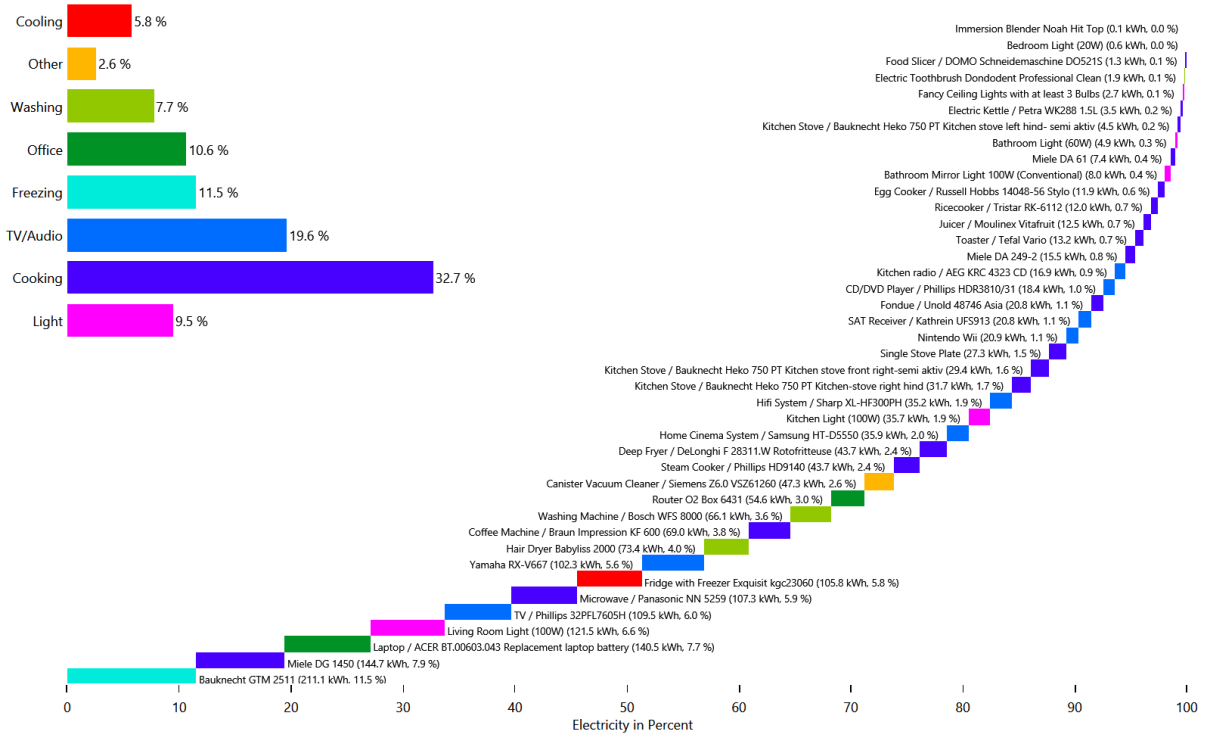
Cold Water



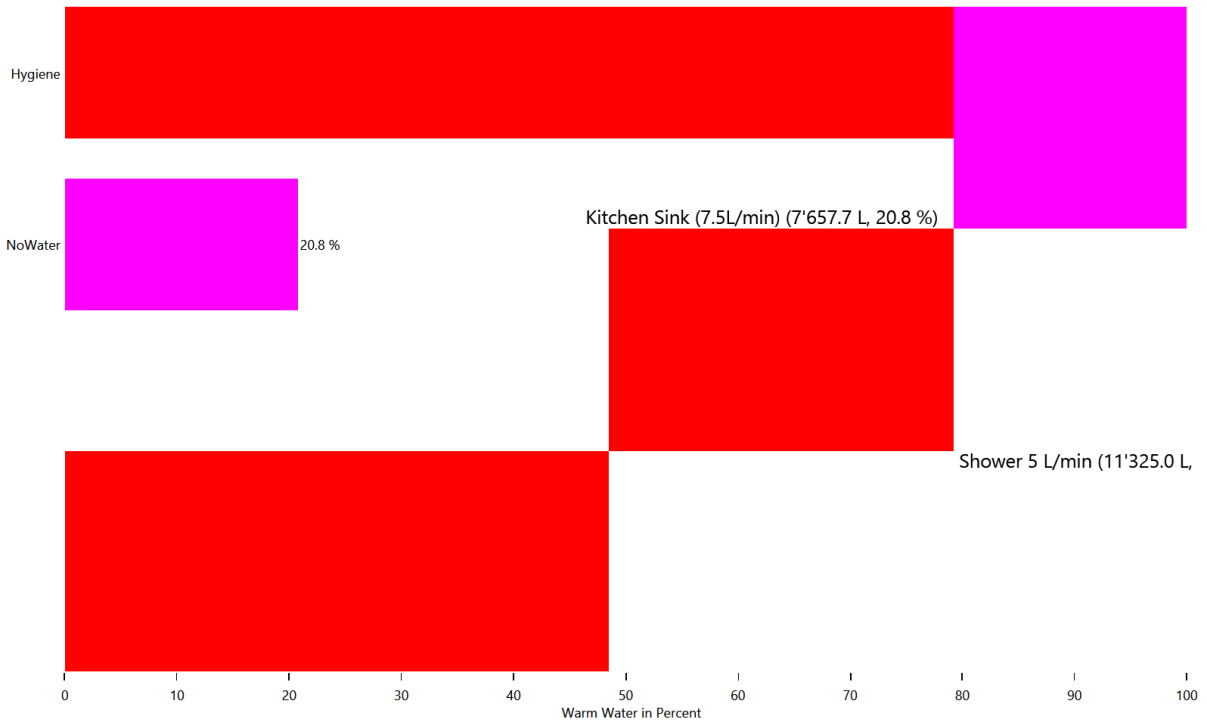
Electricity



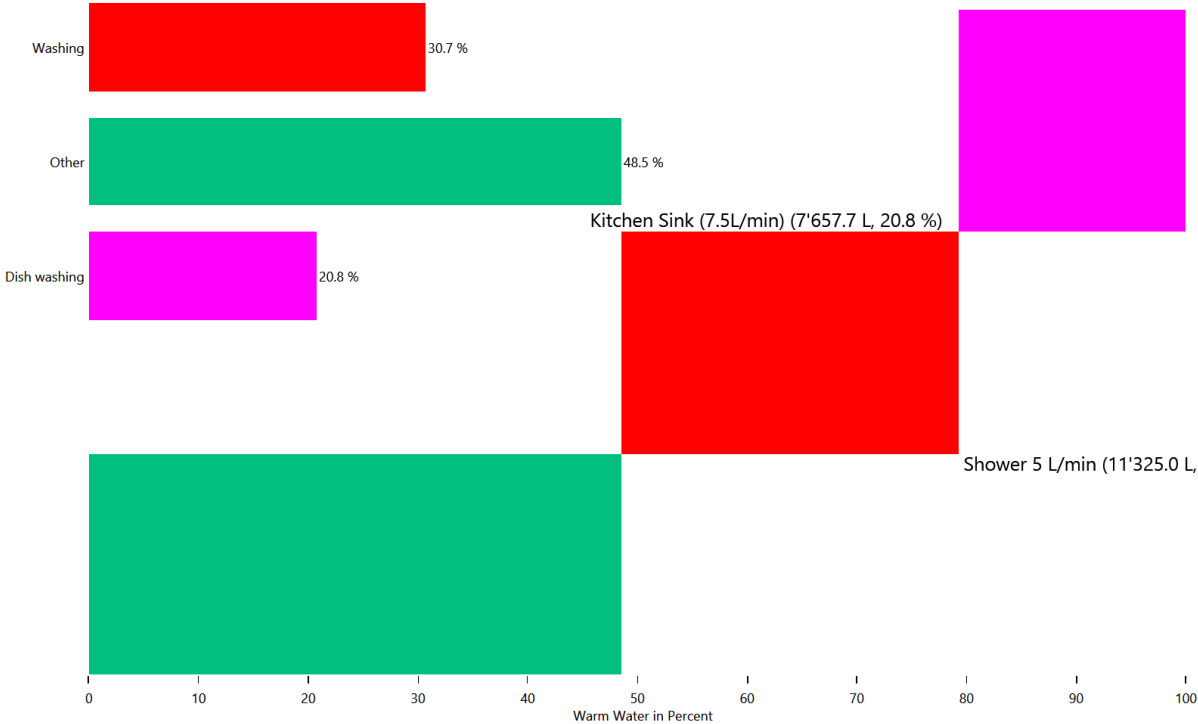
Electricity



Warm Water



Warm Water

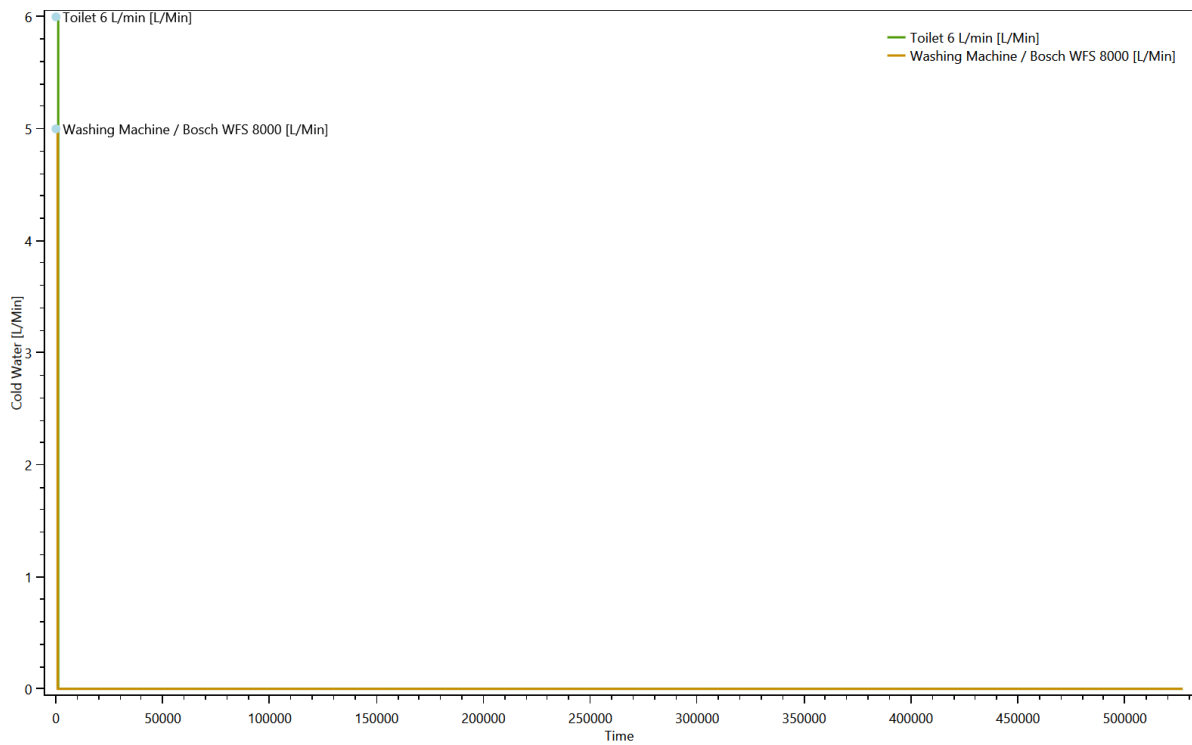


Duration curve for each device for each load type

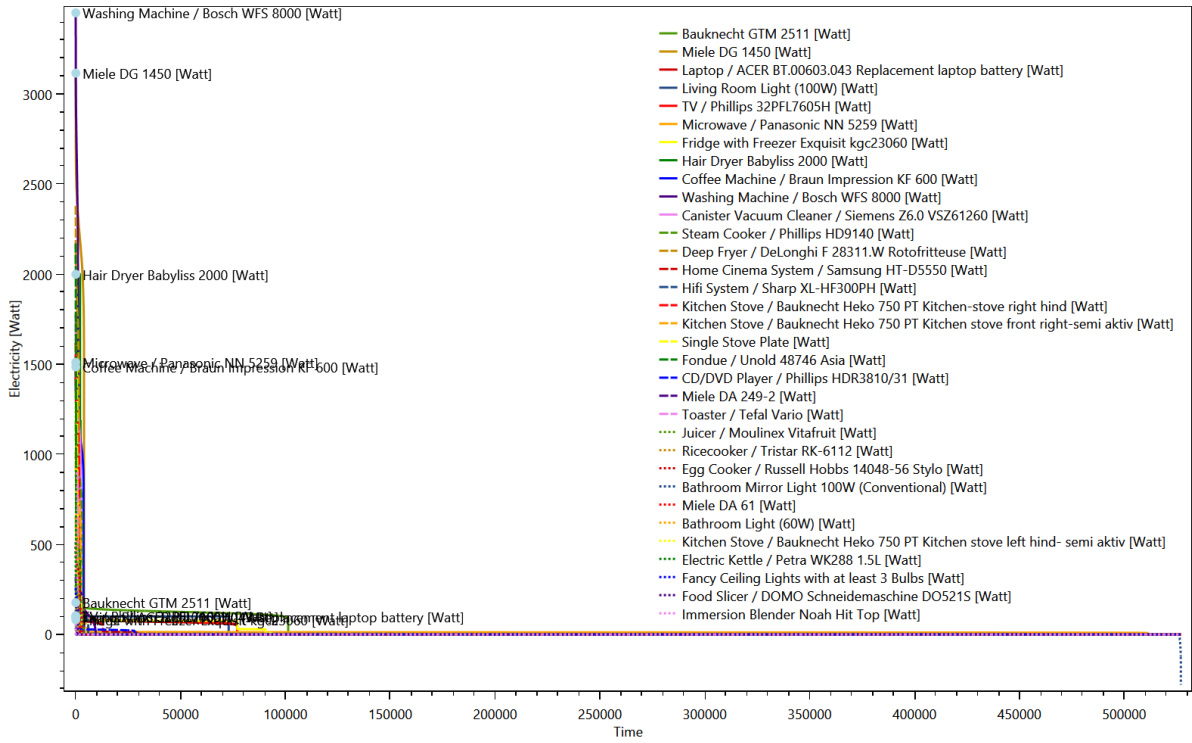
This is made from the files starting with: DeviceDurationCurves

The device duration curve show the duration curve of each device to give an overview of the power consumption.

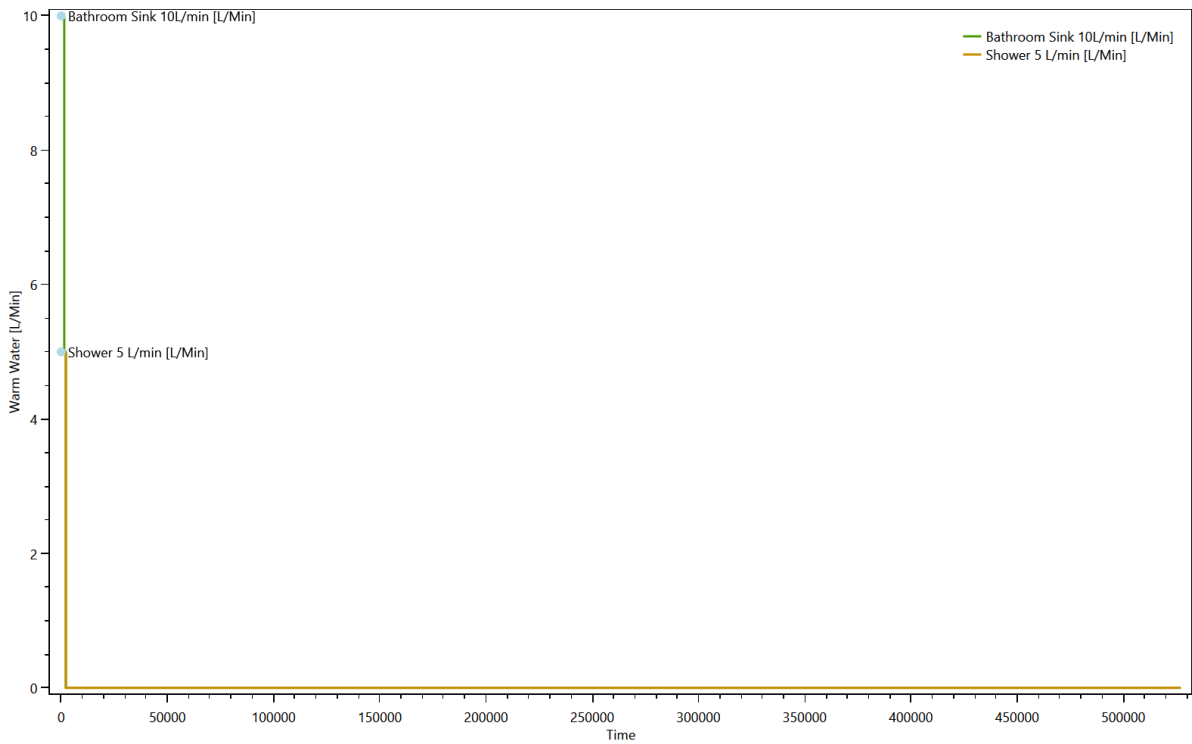
Cold Water



Electricity



Warm Water

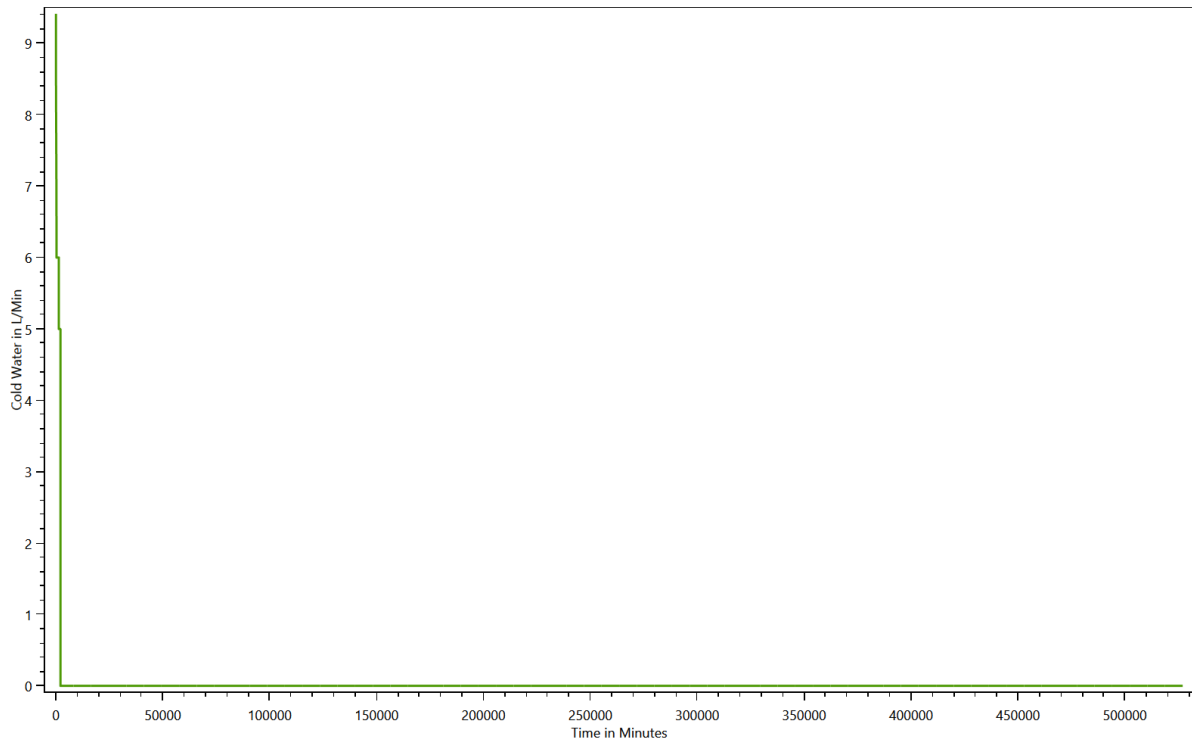


Duration curve for each load type

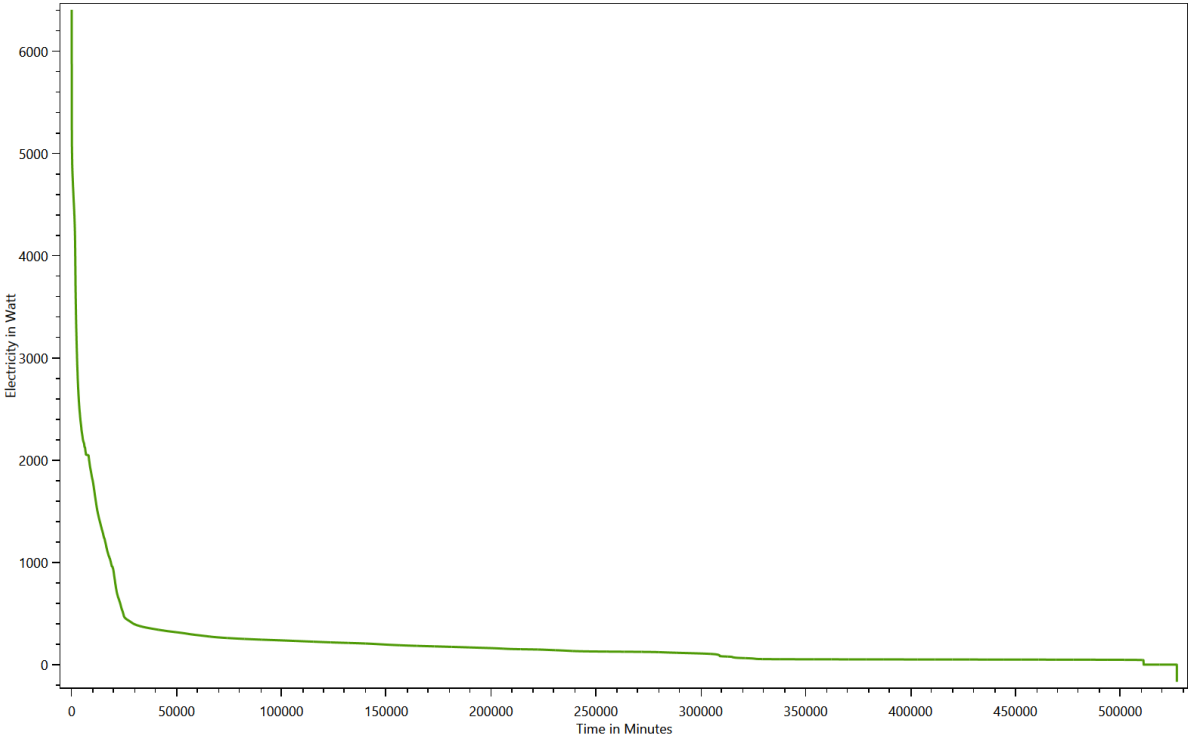
This is made from the files starting with: **DurationCurve**

The duration curve show the duration curve for the entire household to give an overview of the power consumption.

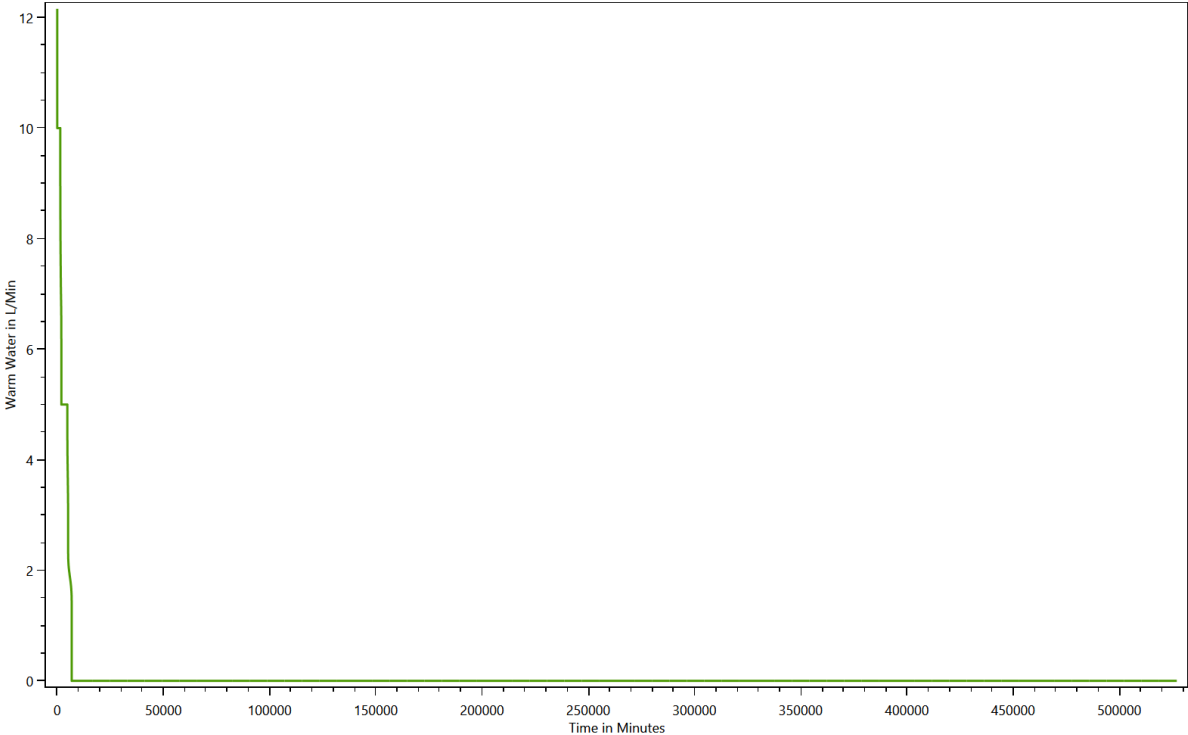
Cold Water



Electricity



Warm Water

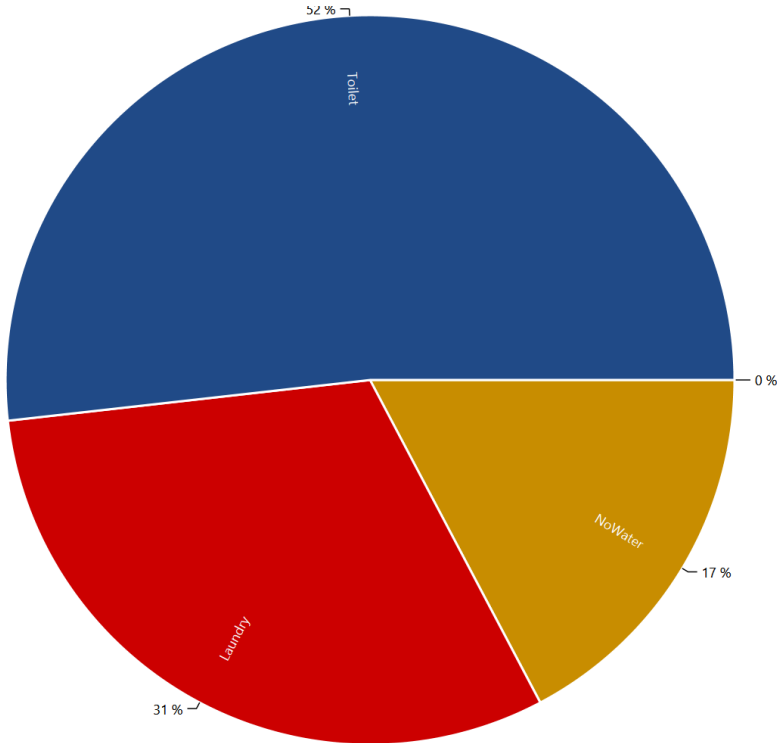


Grouped energy use for each load type for each device

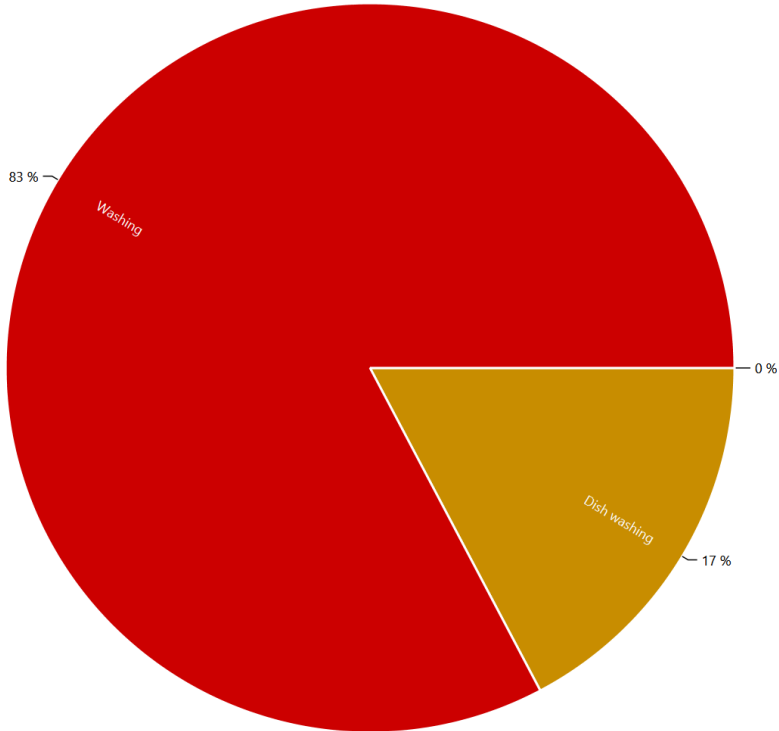
This is made from the files starting with: DeviceTaggingSet

The devices in the LPG can be grouped with various criteria by the device tagging sets. These charts show the results.

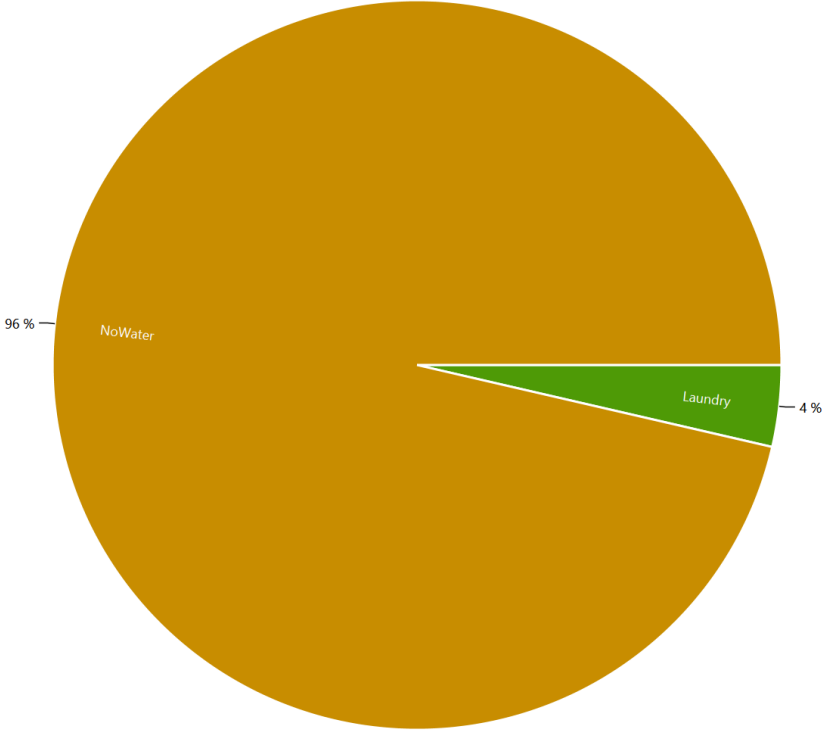
HH0 - Destatis Water Usage Statistics - Cold Water



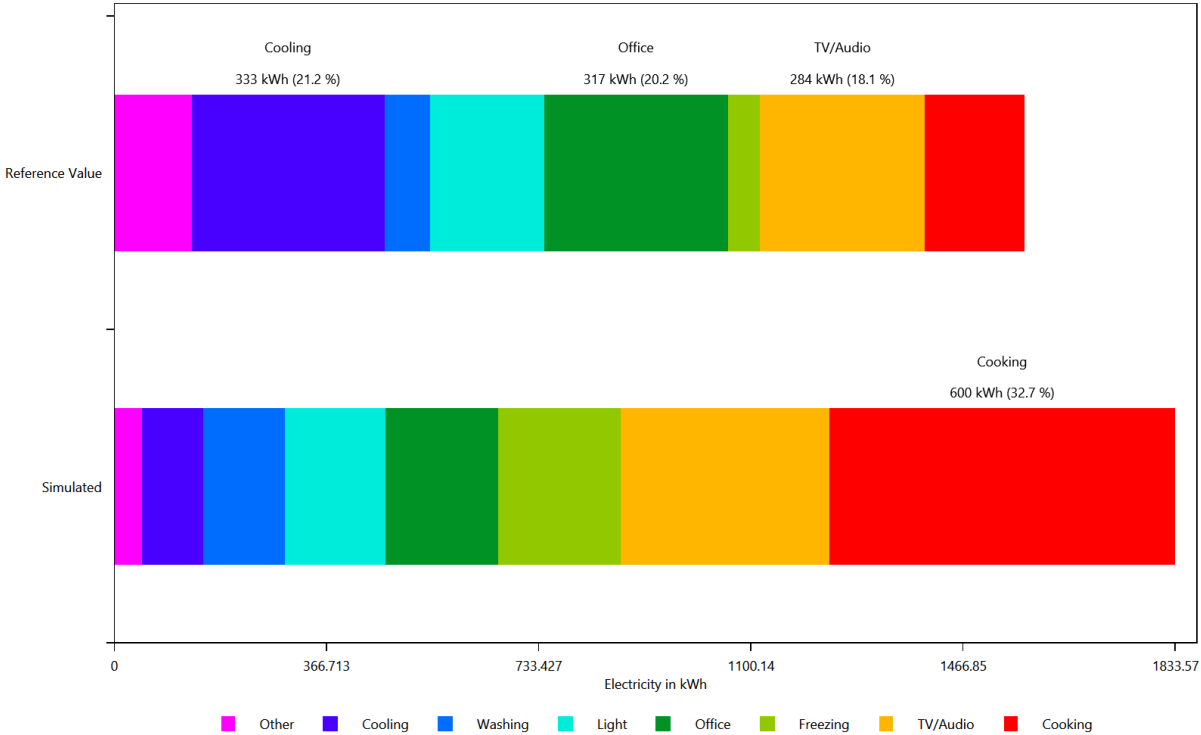
HH0 - Energieagentur - Cold Water



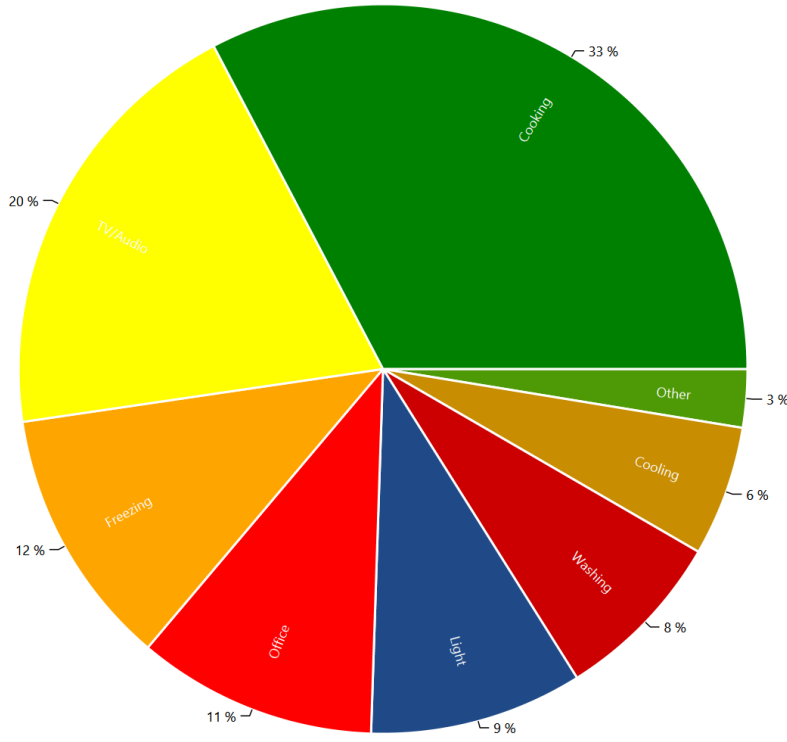
HH0 - Destatis Water Usage Statistics - Electricity



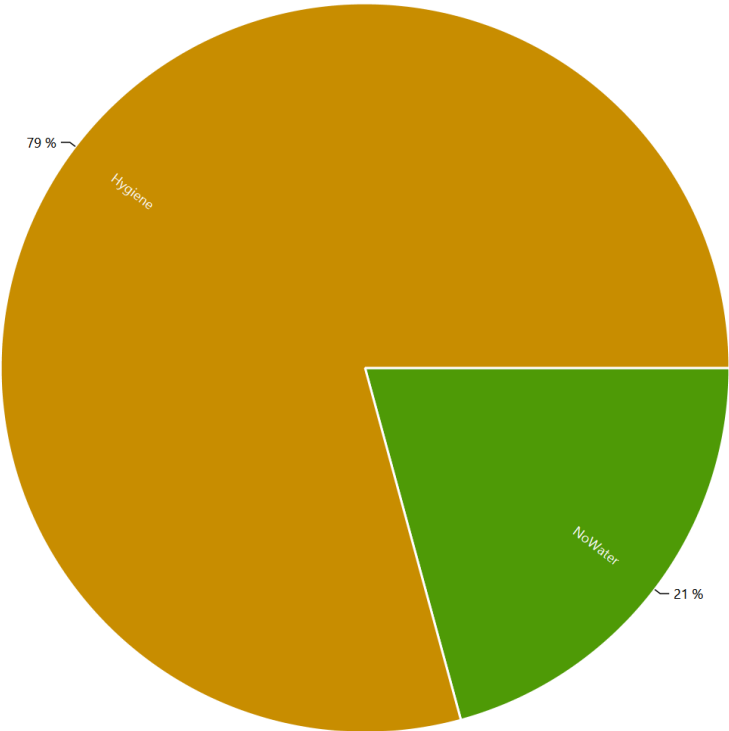
HH0 - Energieagentur - Electricity



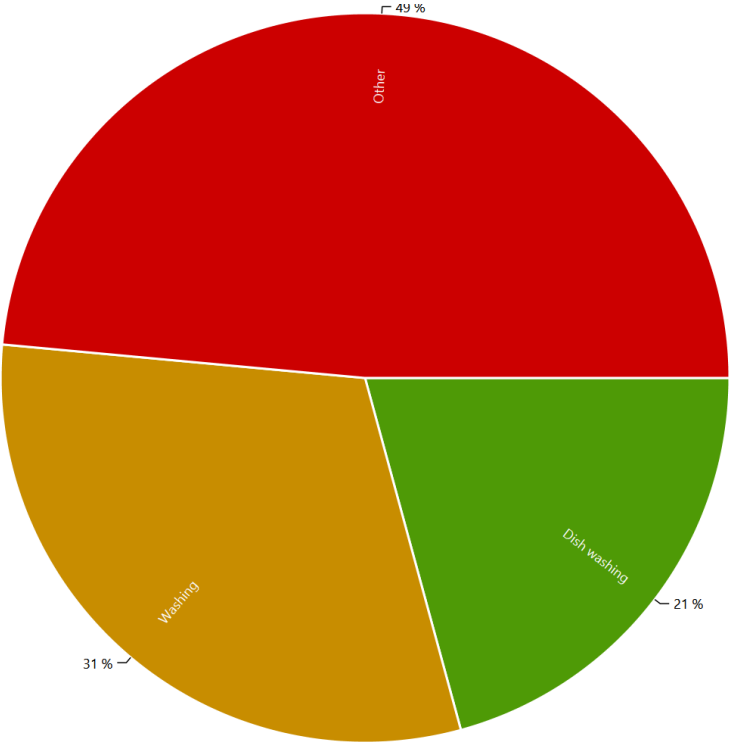
HH0 - Energieagentur - Electricity



HH0 - Destatis Water Usage Statistics - Warm Water



HH0 - Energieagentur - Warm Water

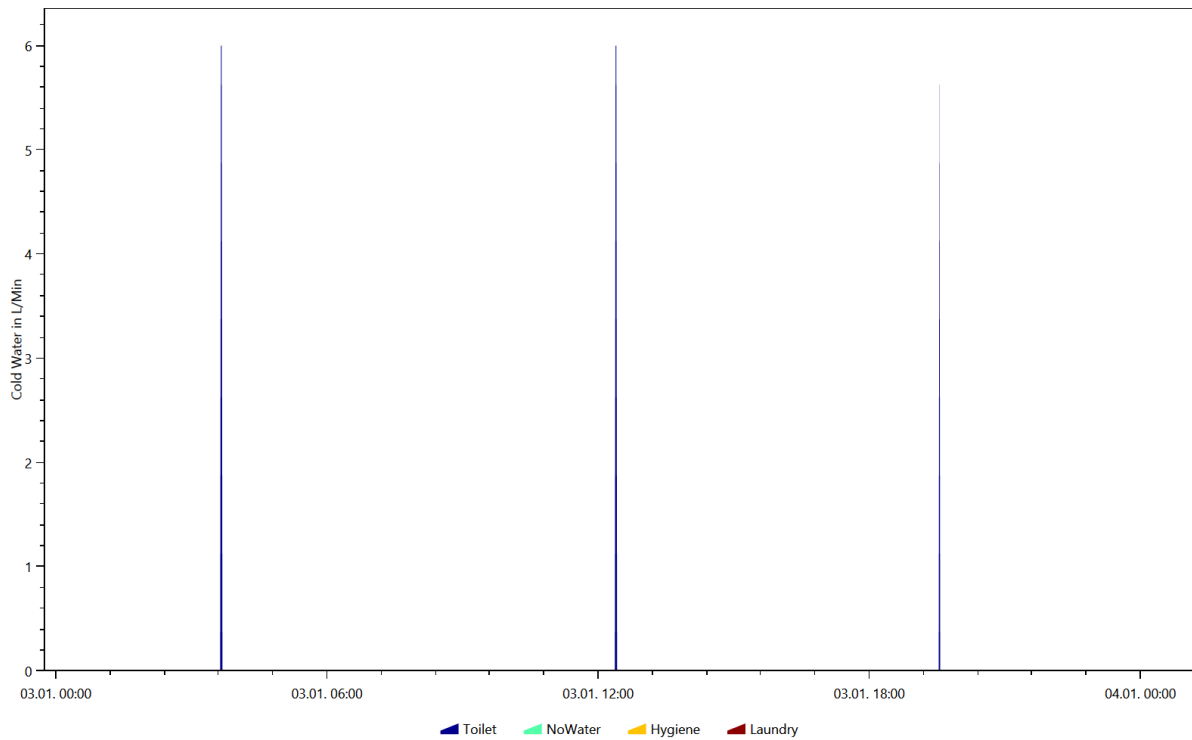


Example of the device profiles for each load type

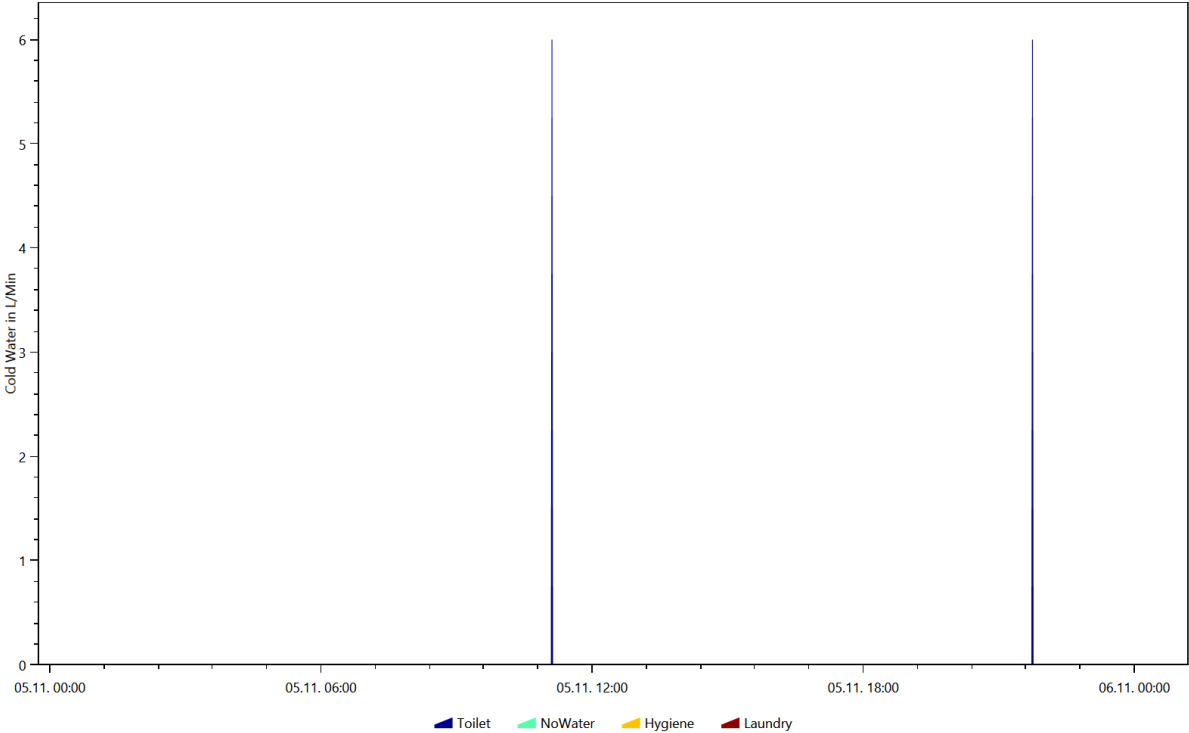
This is made from the files starting with: DeviceProfiles

The device profile files are the reason for the LPG. They show the power consumption of each device.

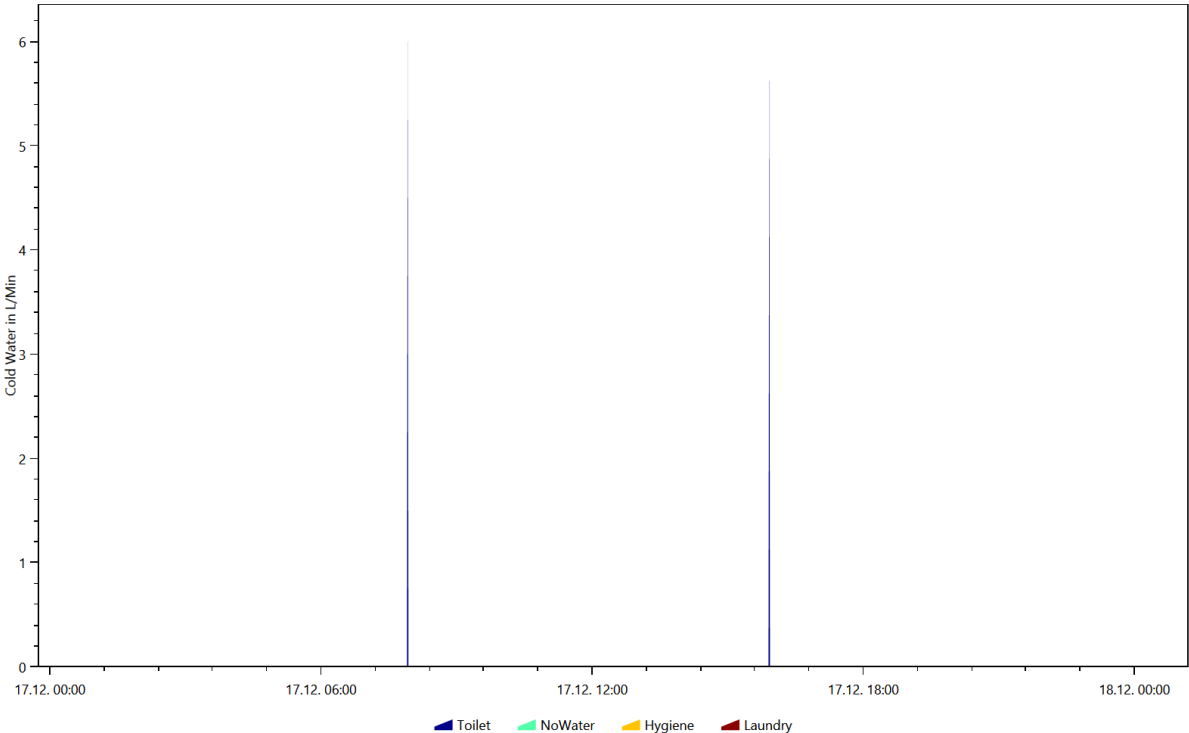
Cold Water, Coloring Scheme: Destatis Water Usage Statistics, Date 2016.1.3



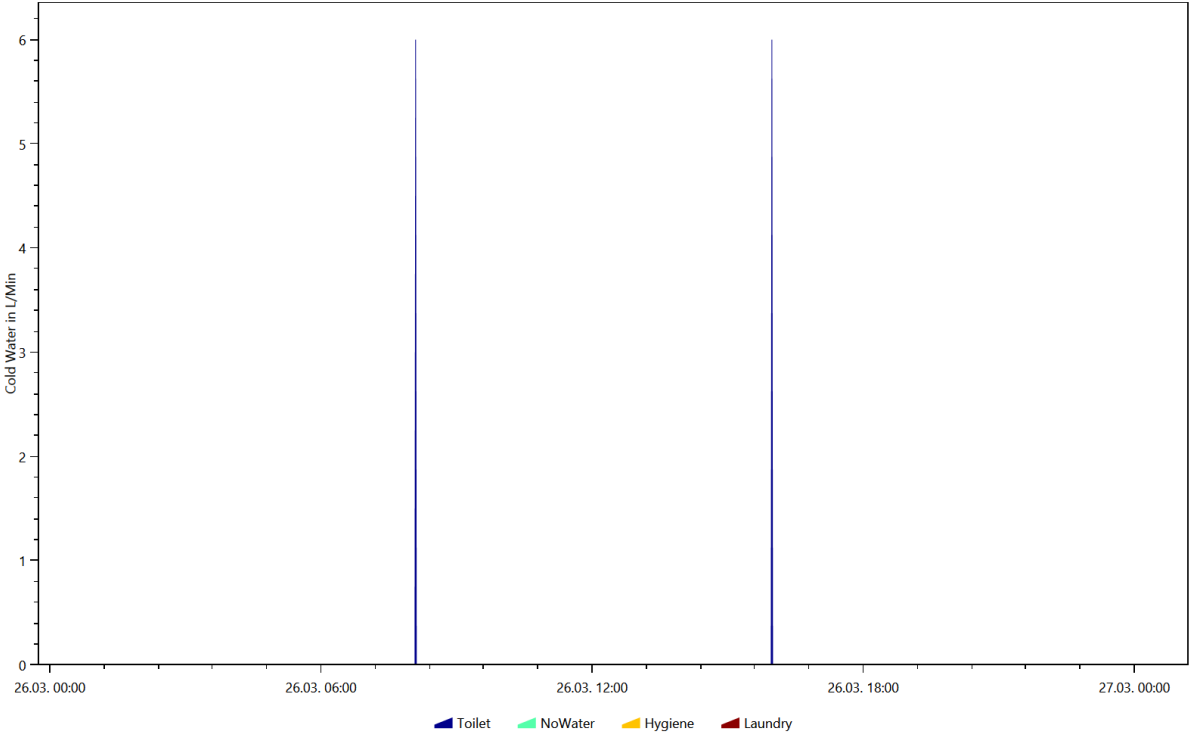
Cold Water, Coloring Scheme: Destatis Water Usage Statistics, Date 2016.11.5



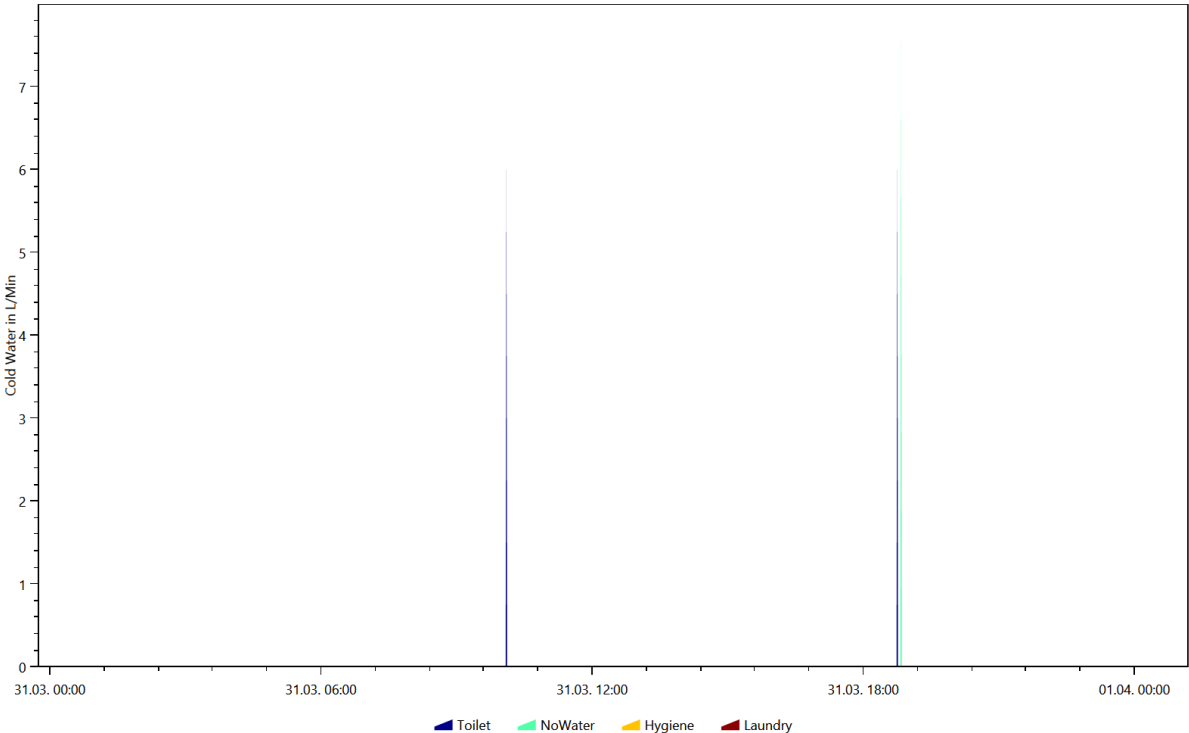
Cold Water, Coloring Scheme: Destatis Water Usage Statistics, Date 2016.12.17



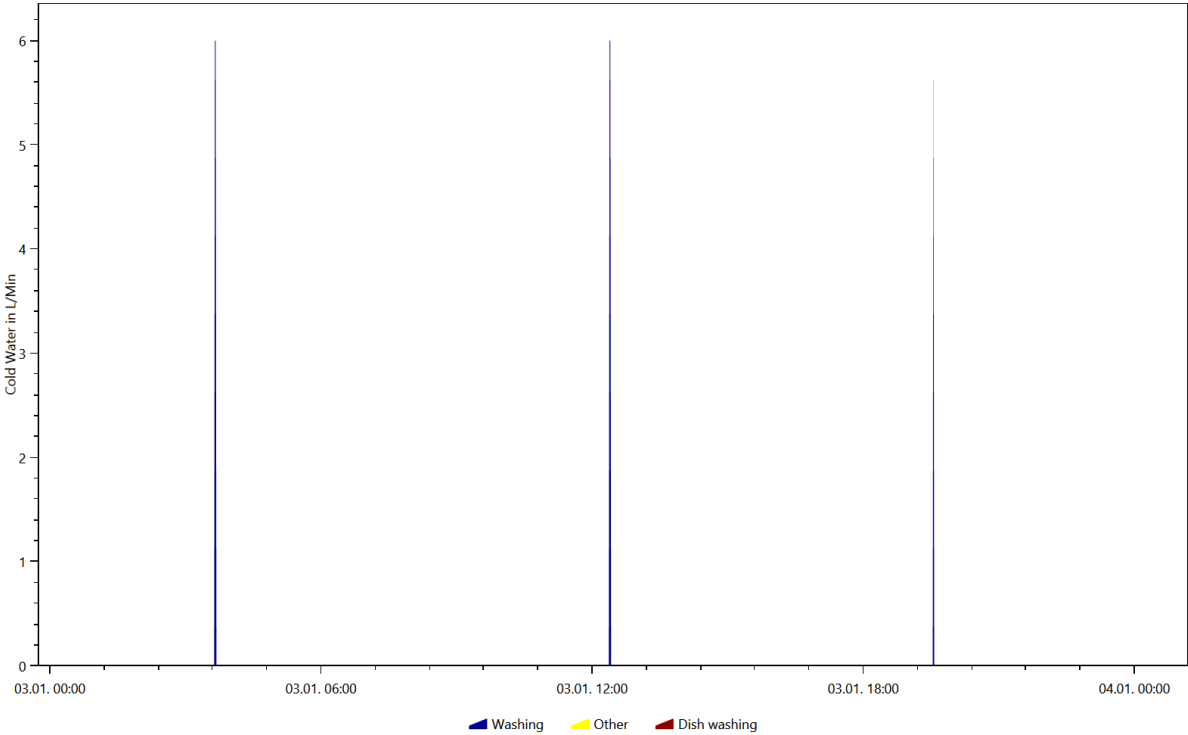
Cold Water, Coloring Scheme: Destatis Water Usage Statistics, Date 2016.3.26



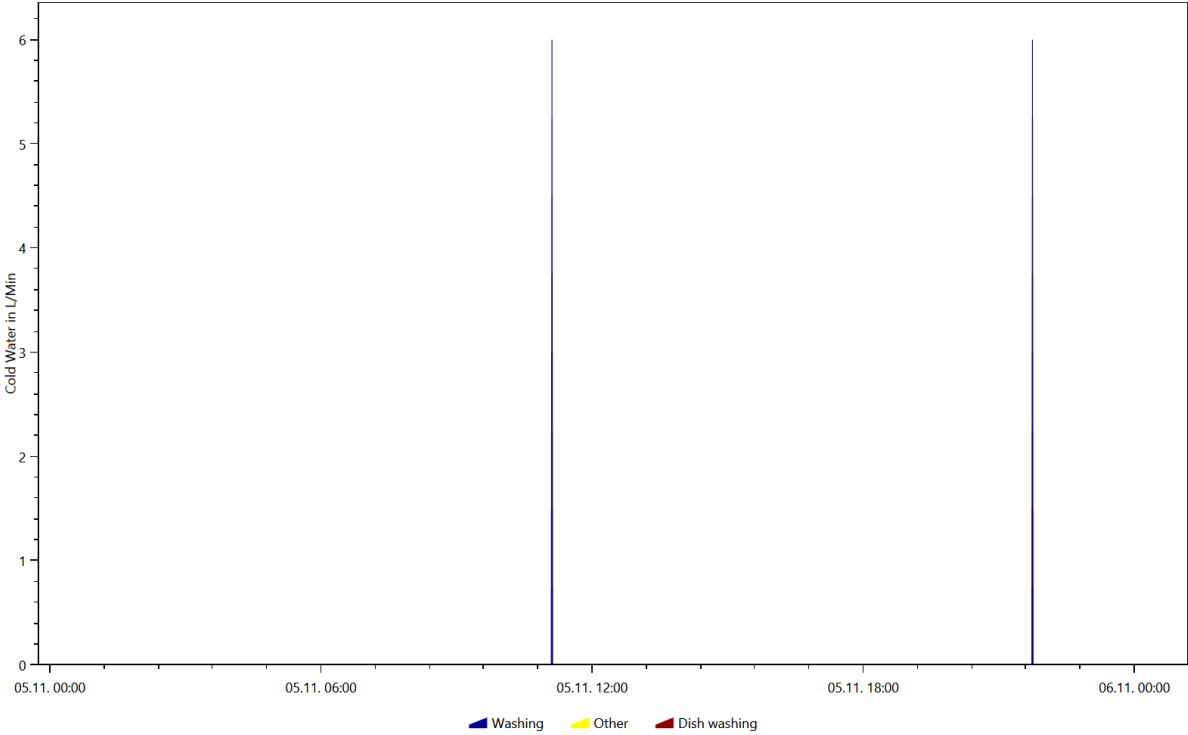
Cold Water, Coloring Scheme: Destatis Water Usage Statistics, Date 2016.3.31



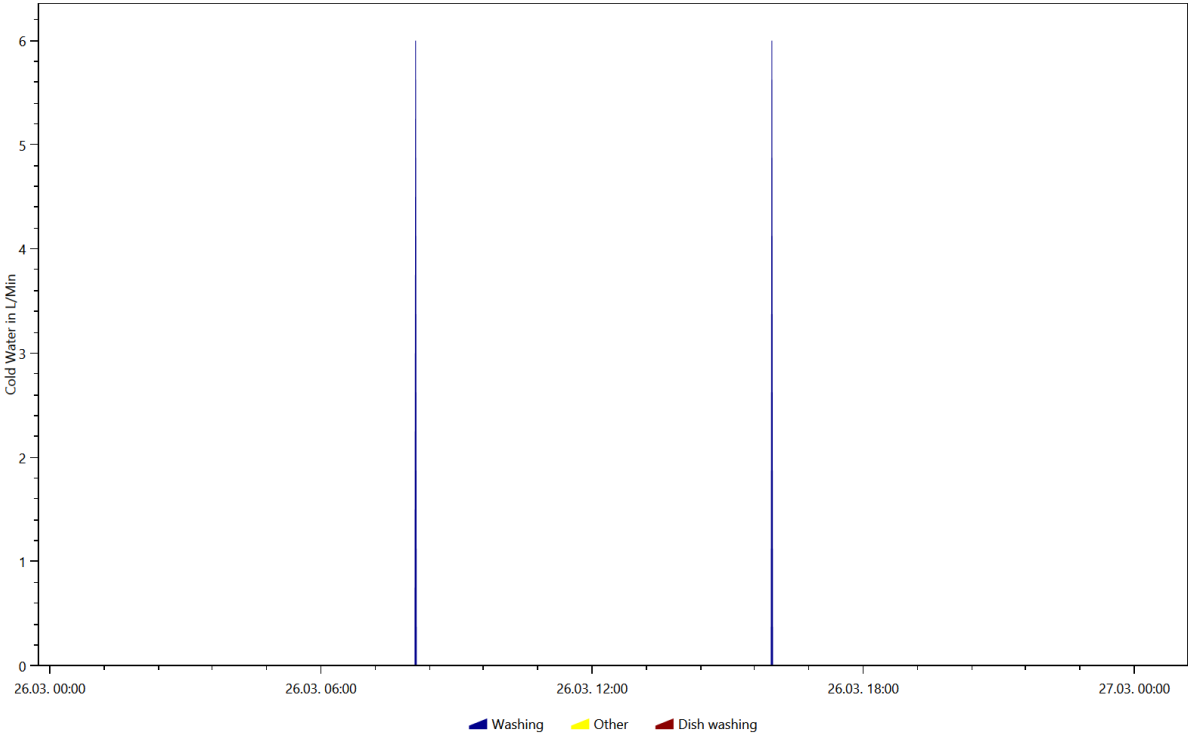
Cold Water, Coloring Scheme: Energieagentur.NRW Tags, Date 2016.1.3



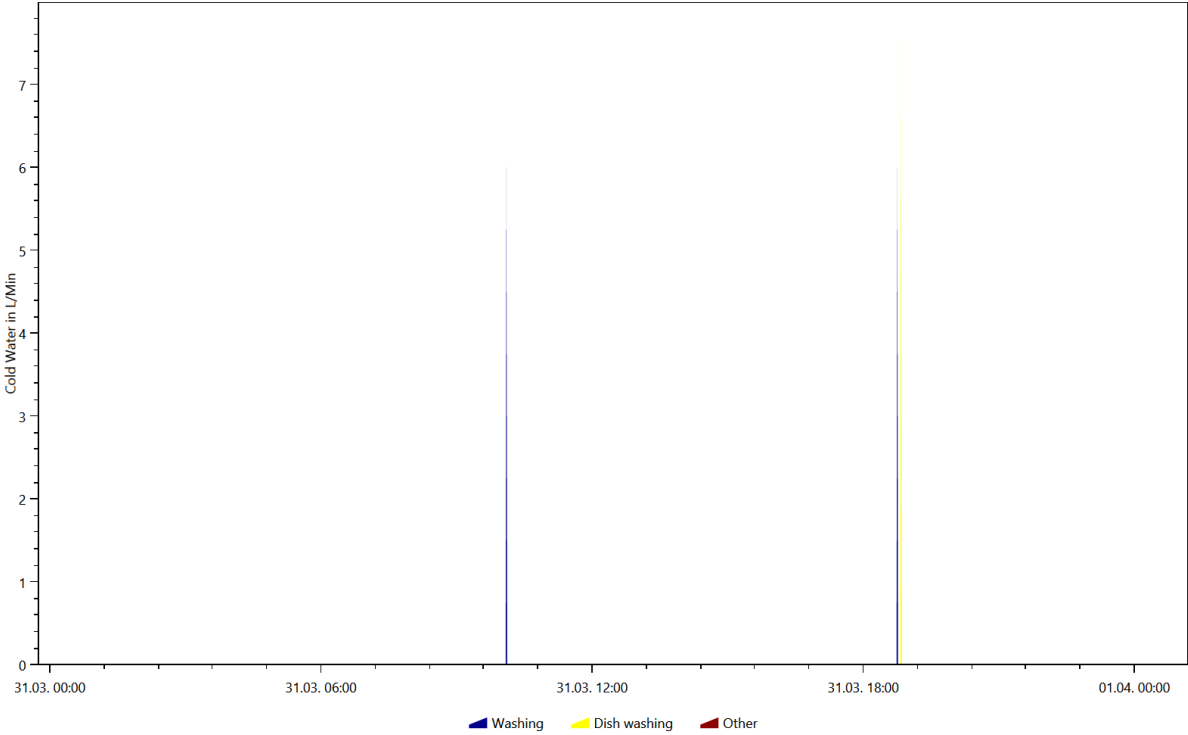
Cold Water, Coloring Scheme: Energieagentur.NRW Tags, Date 2016.11.5



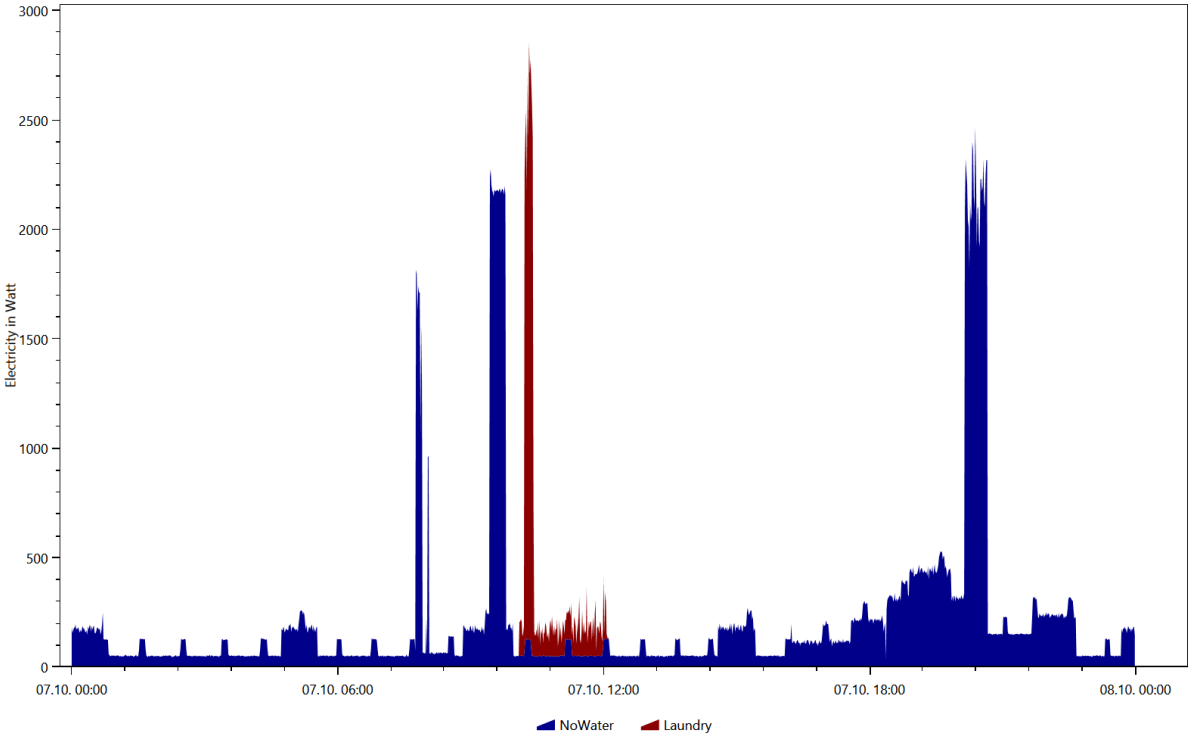
Cold Water, Coloring Scheme: Energieagentur.NRW Tags, Date 2016.3.26



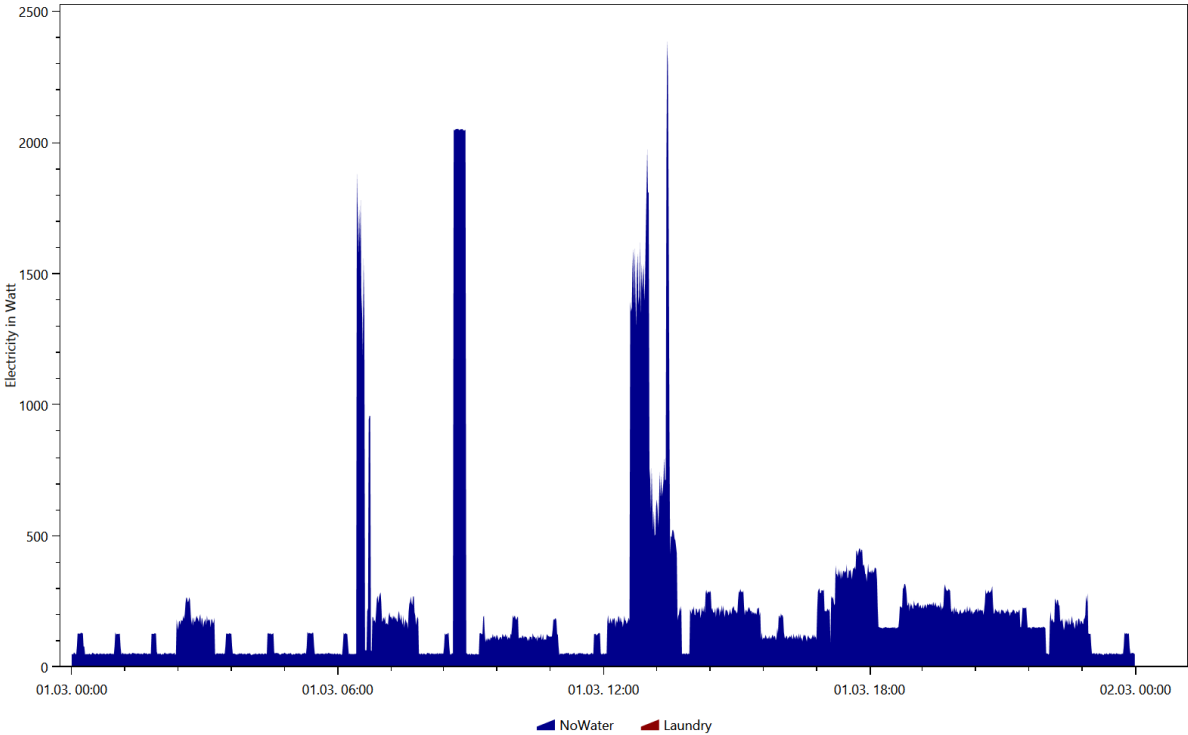
Cold Water, Coloring Scheme: Energieagentur.NRW Tags, Date 2016.3.31



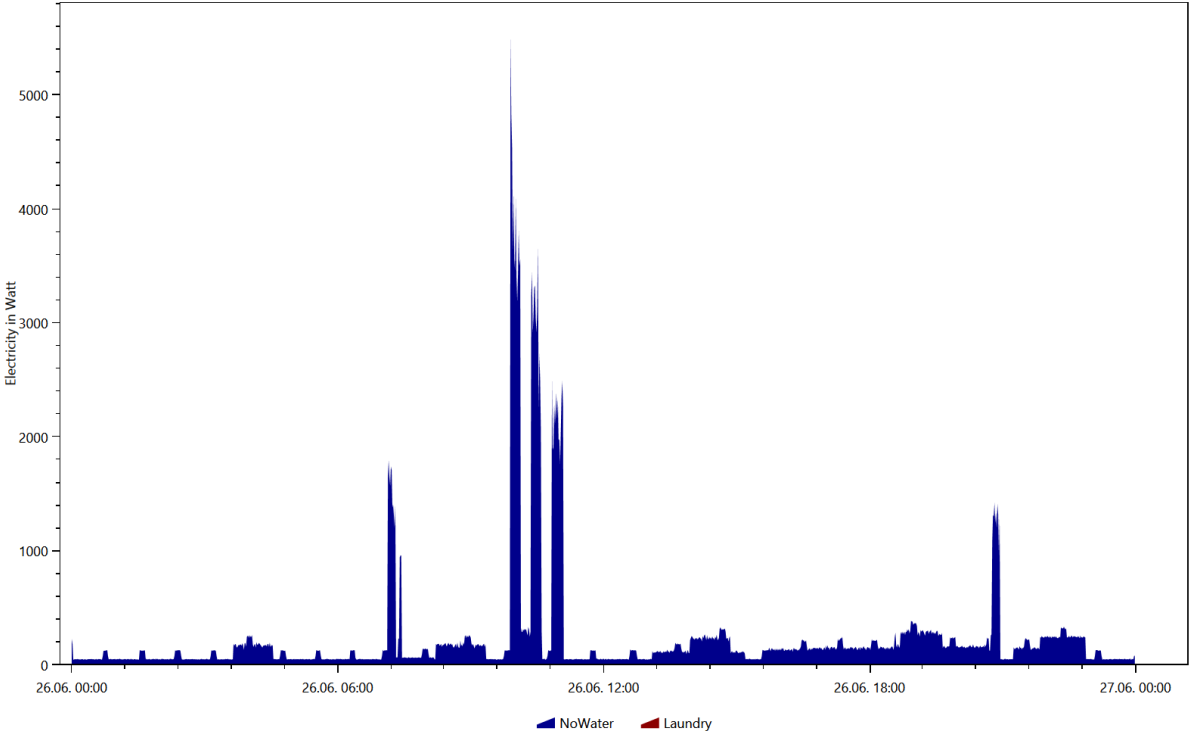
Electricity, Coloring Scheme: Destatis Water Usage Statistics, Date 2016.10.7



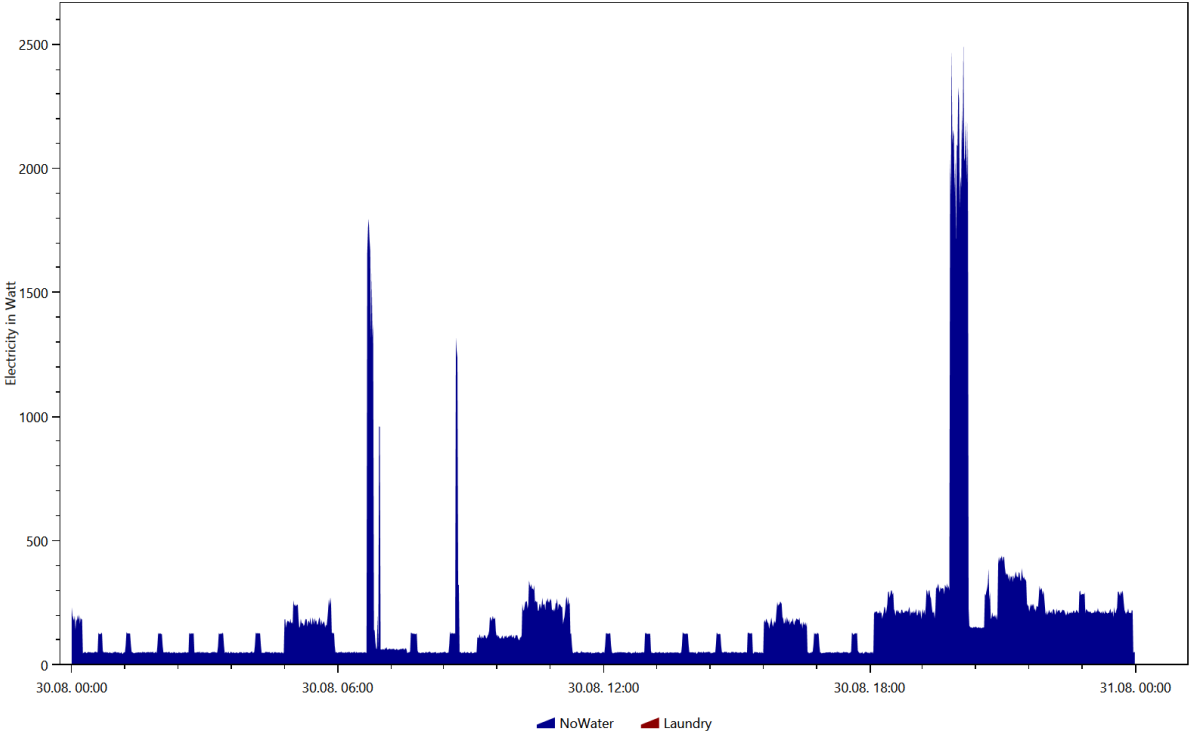
Electricity, Coloring Scheme: Destatis Water Usage Statistics, Date 2016.3.1



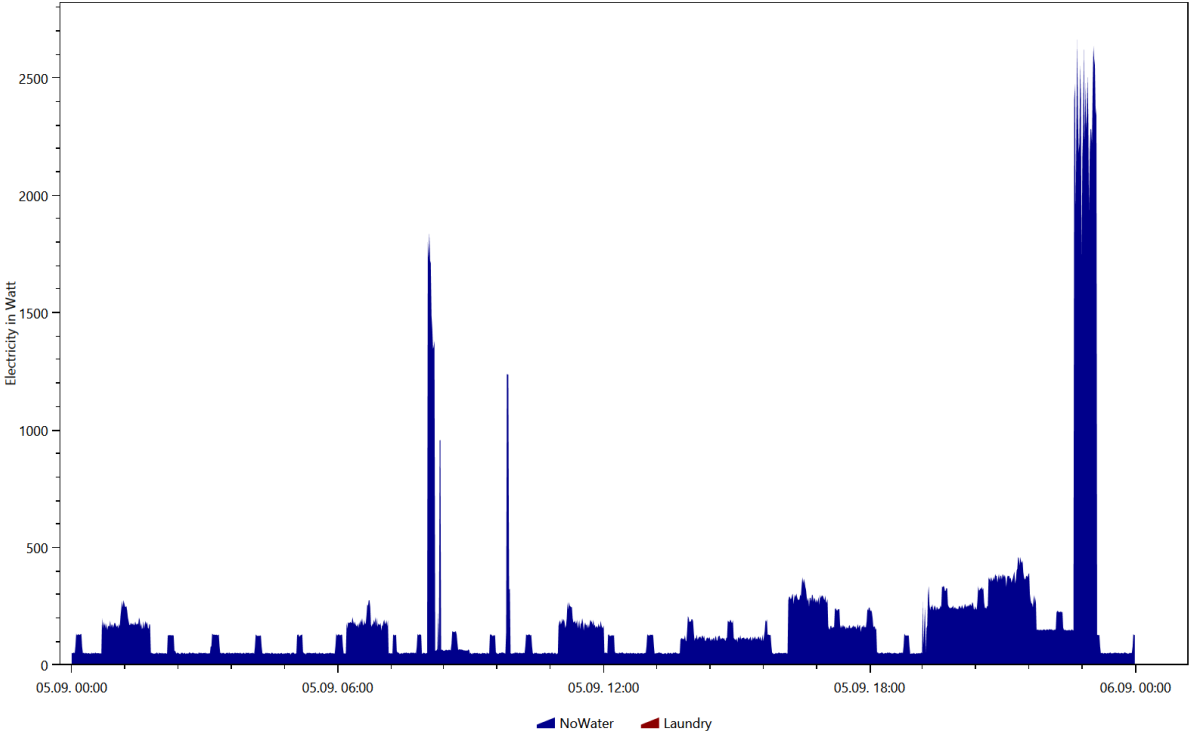
Electricity, Coloring Scheme: Destatis Water Usage Statistics, Date 2016.6.26



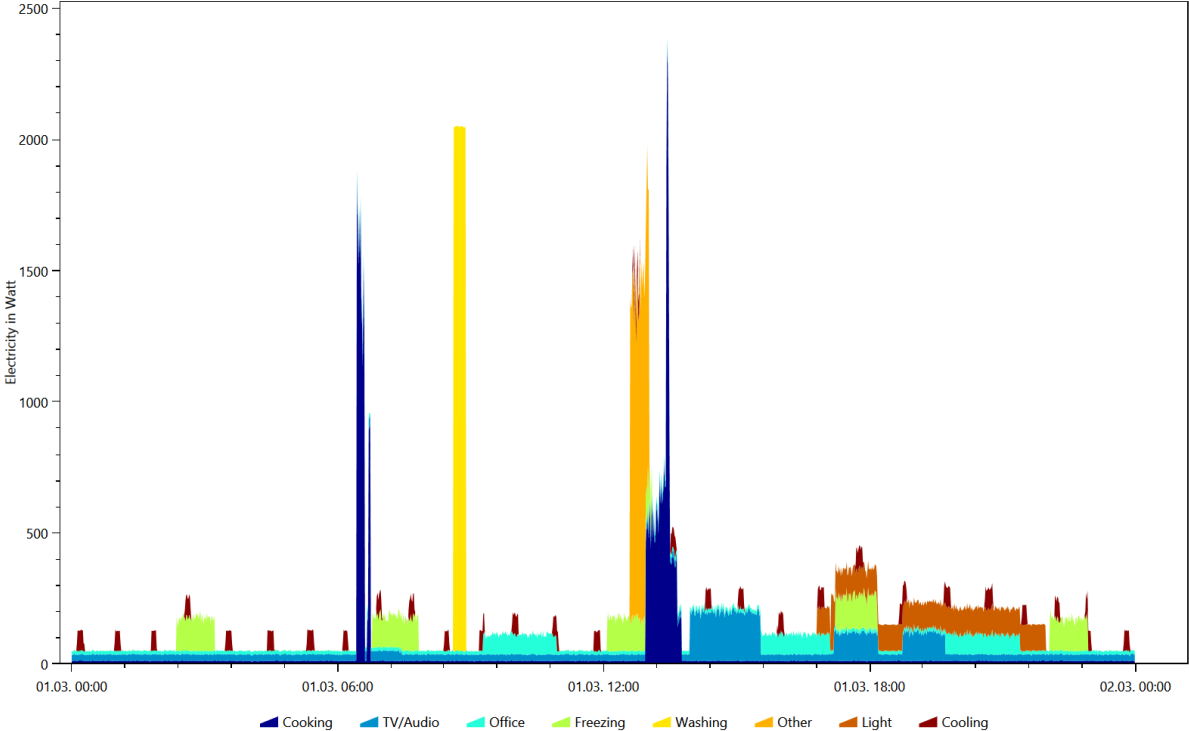
Electricity, Coloring Scheme: Destatis Water Usage Statistics, Date 2016.8.30



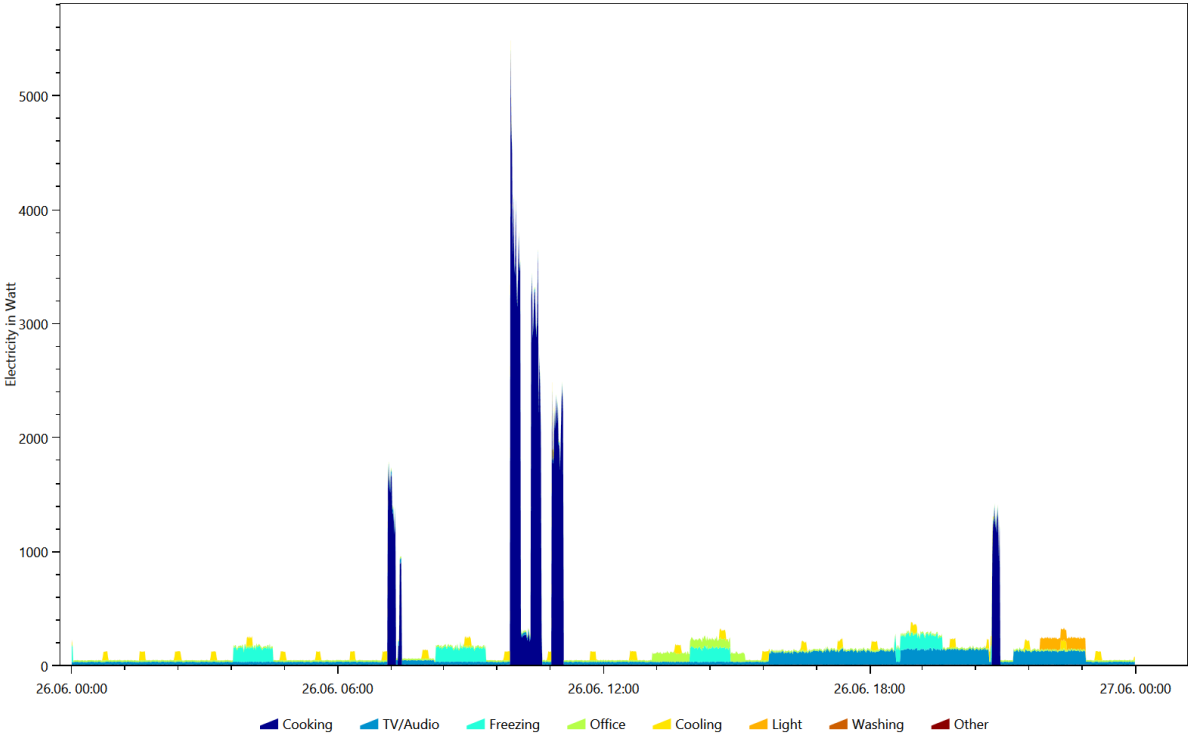
Electricity, Coloring Scheme: Destatis Water Usage Statistics, Date 2016.9.5



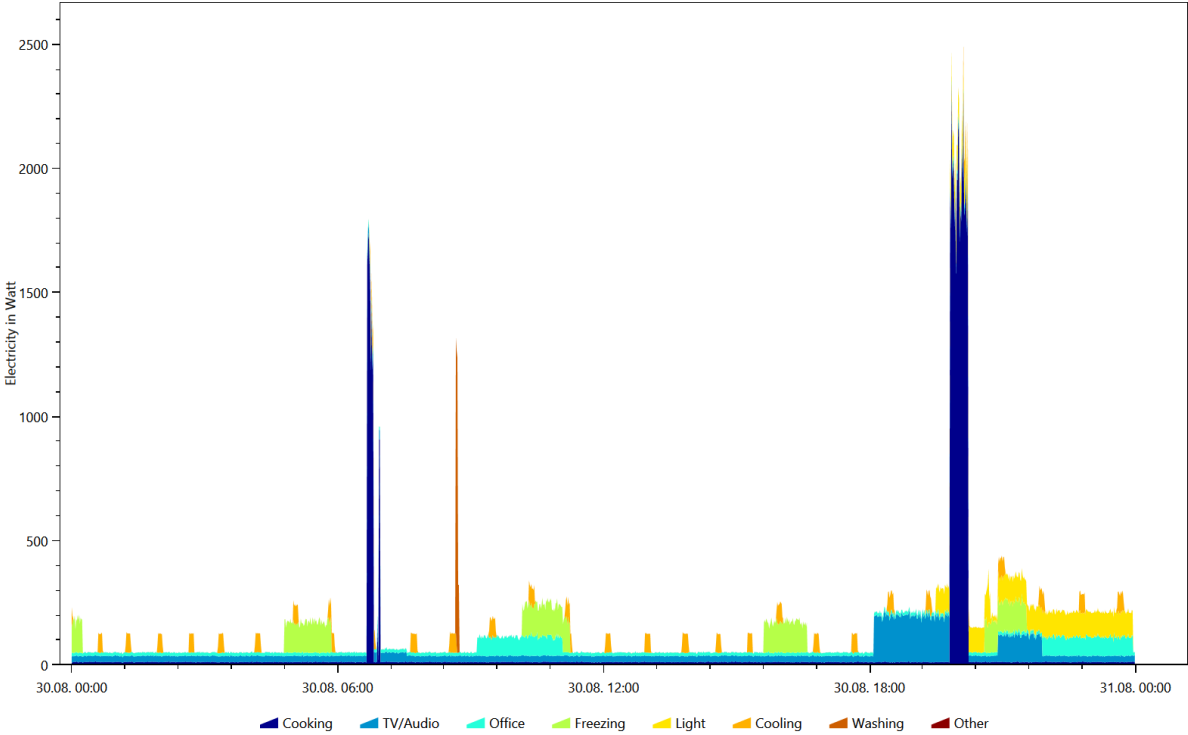
Electricity, Coloring Scheme: Energieagentur.NRW Tags, Date 2016.3.1



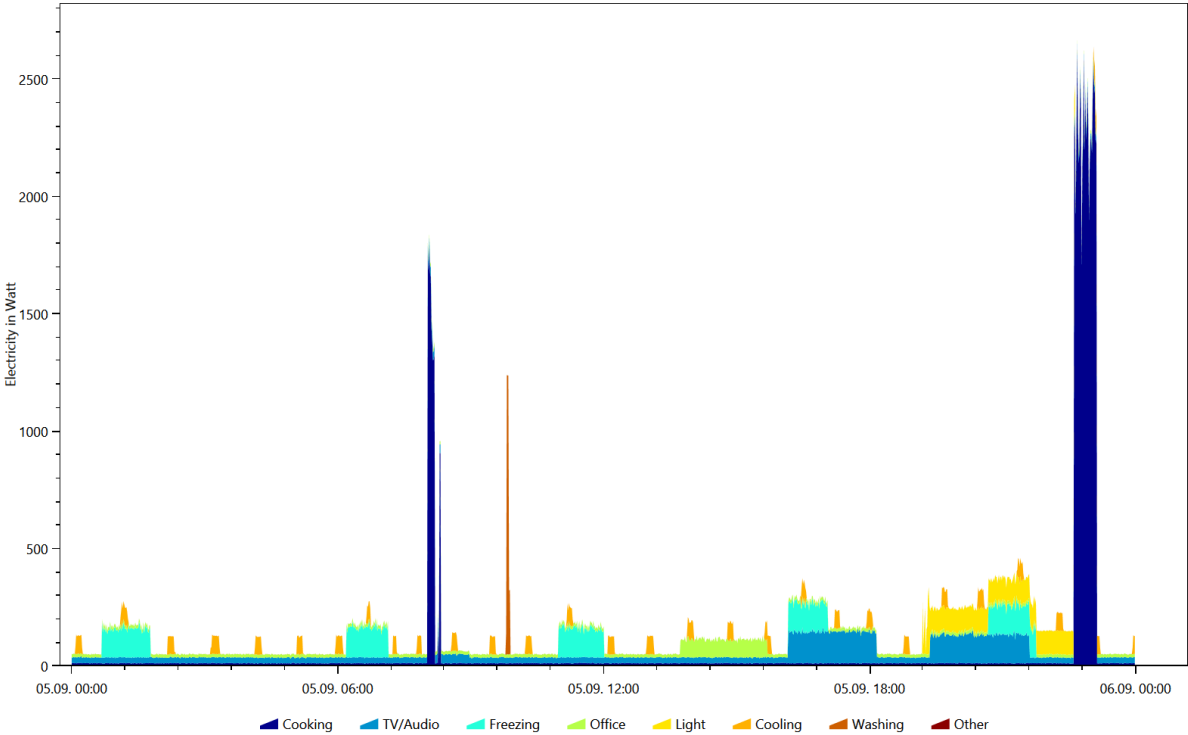
Electricity, Coloring Scheme: Energieagentur.NRW Tags, Date 2016.6.26



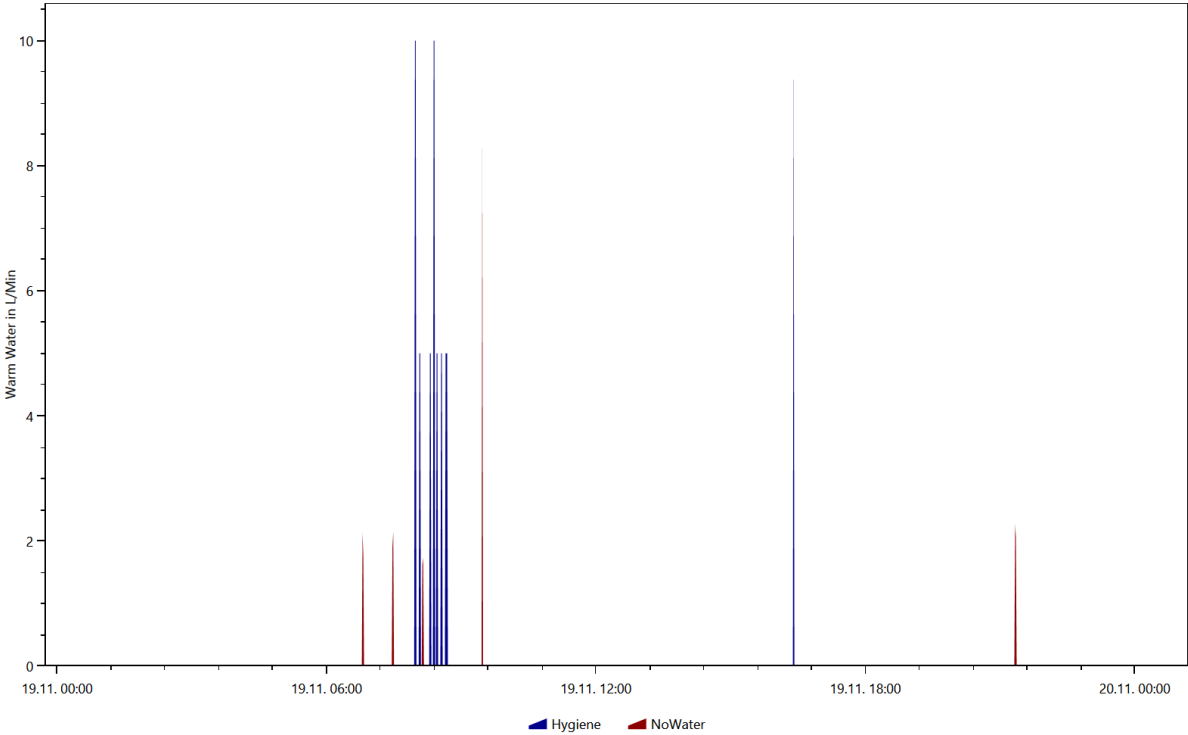
Electricity, Coloring Scheme: Energieagentur.NRW Tags, Date 2016.8.30



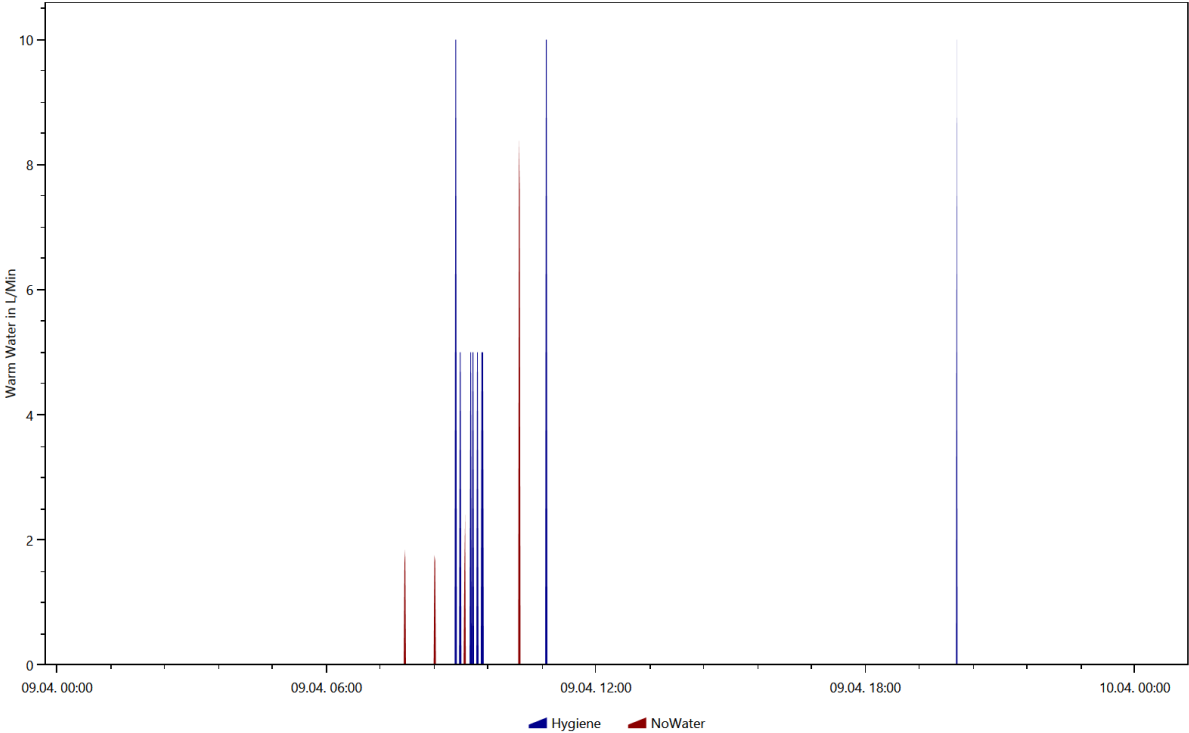
Electricity, Coloring Scheme: Energieagentur.NRW Tags, Date 2016.9.5



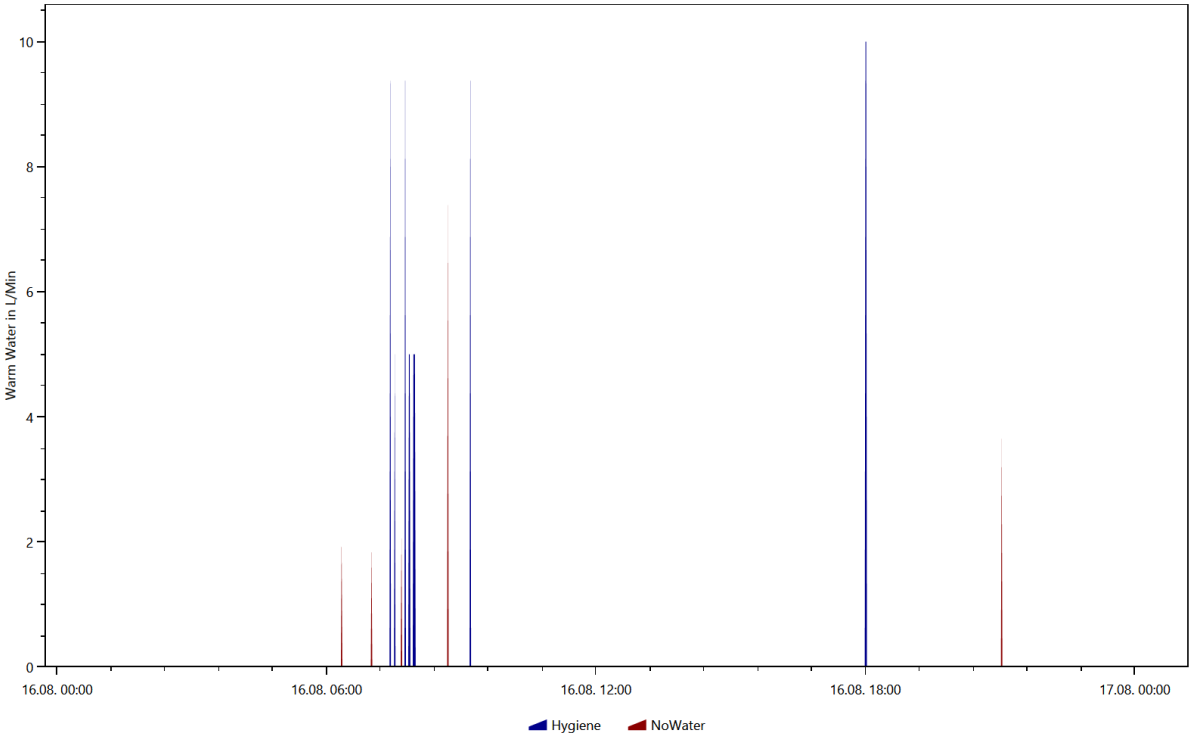
Warm Water, Coloring Scheme: Destatis Water Usage Statistics, Date 2016.11.19



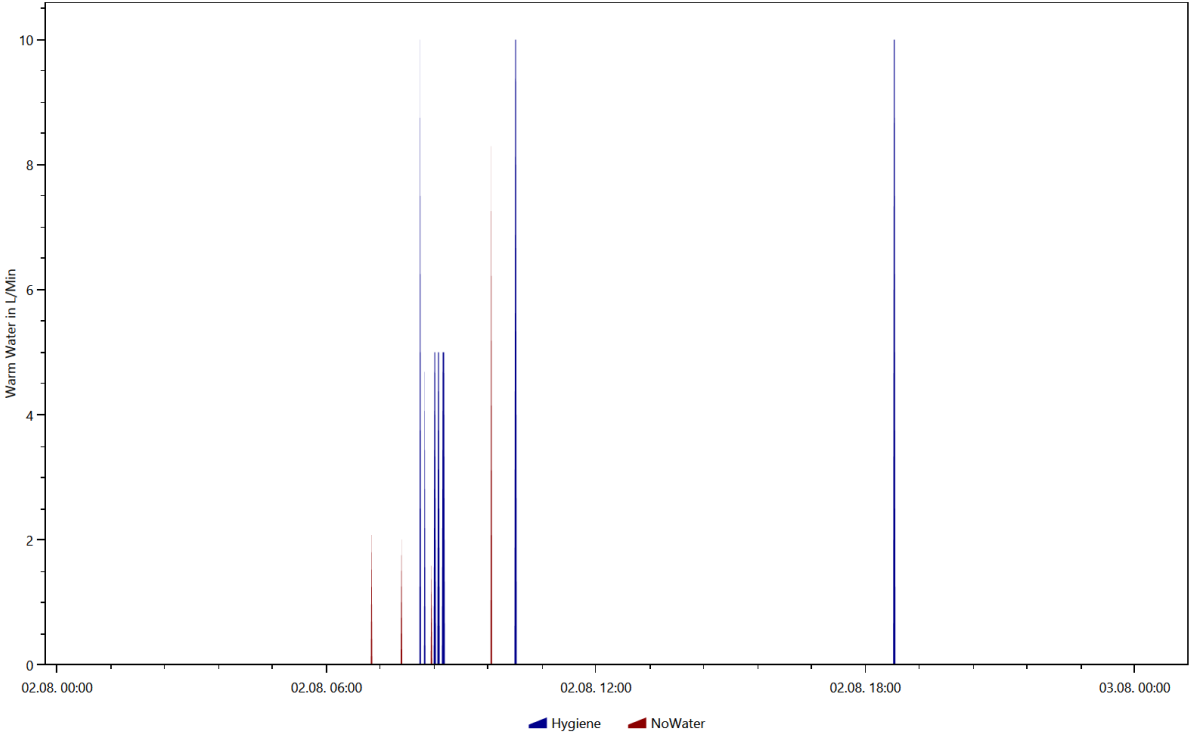
Warm Water, Coloring Scheme: Destatis Water Usage Statistics, Date 2016.4.9



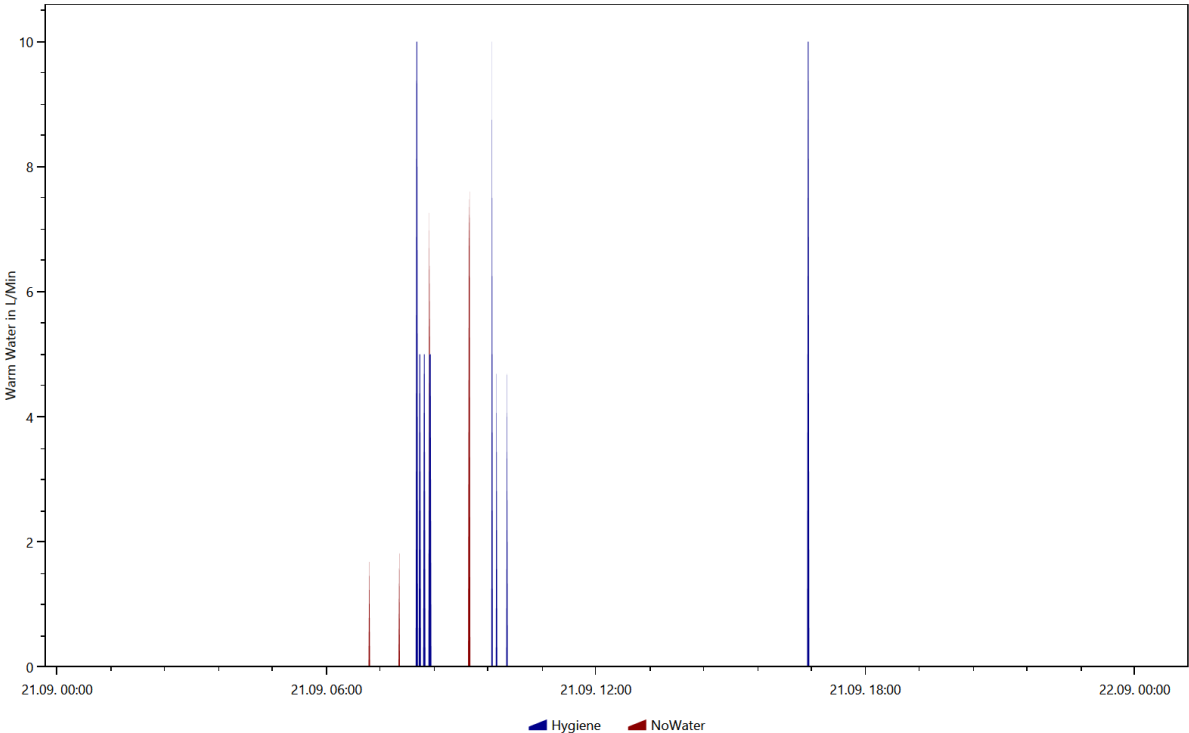
Warm Water, Coloring Scheme: Destatis Water Usage Statistics, Date 2016.8.16



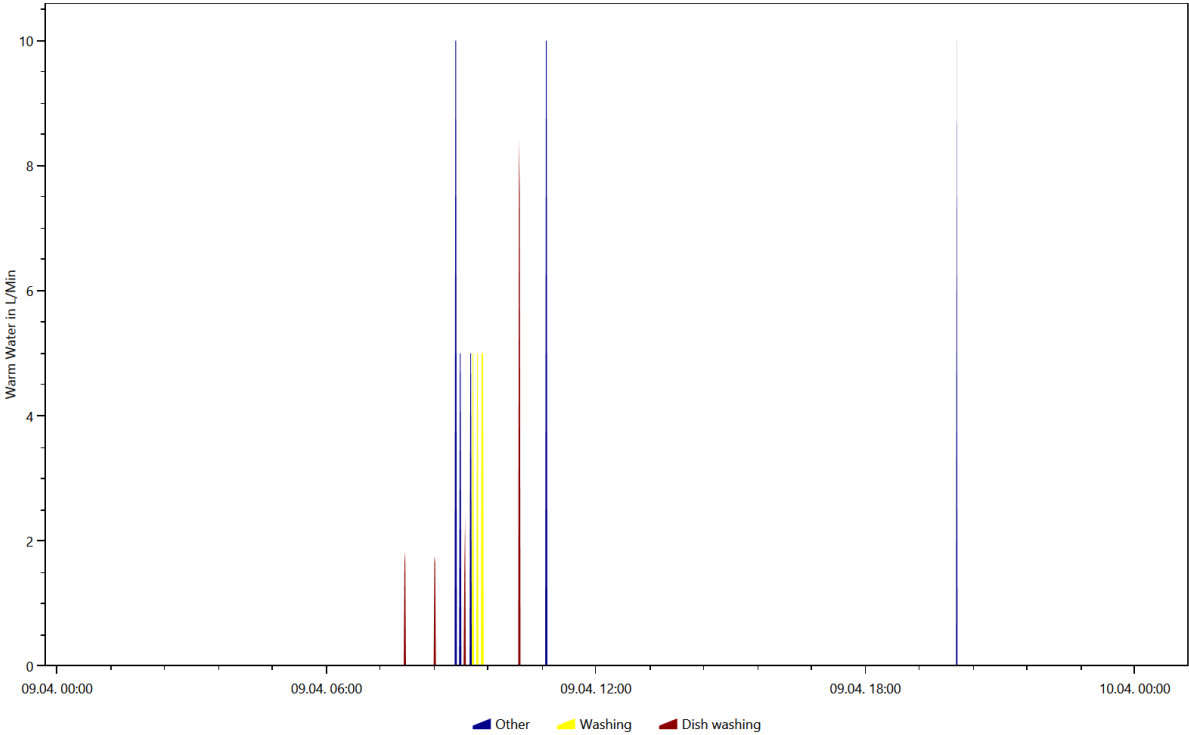
Warm Water, Coloring Scheme: Destatis Water Usage Statistics, Date 2016.8.2



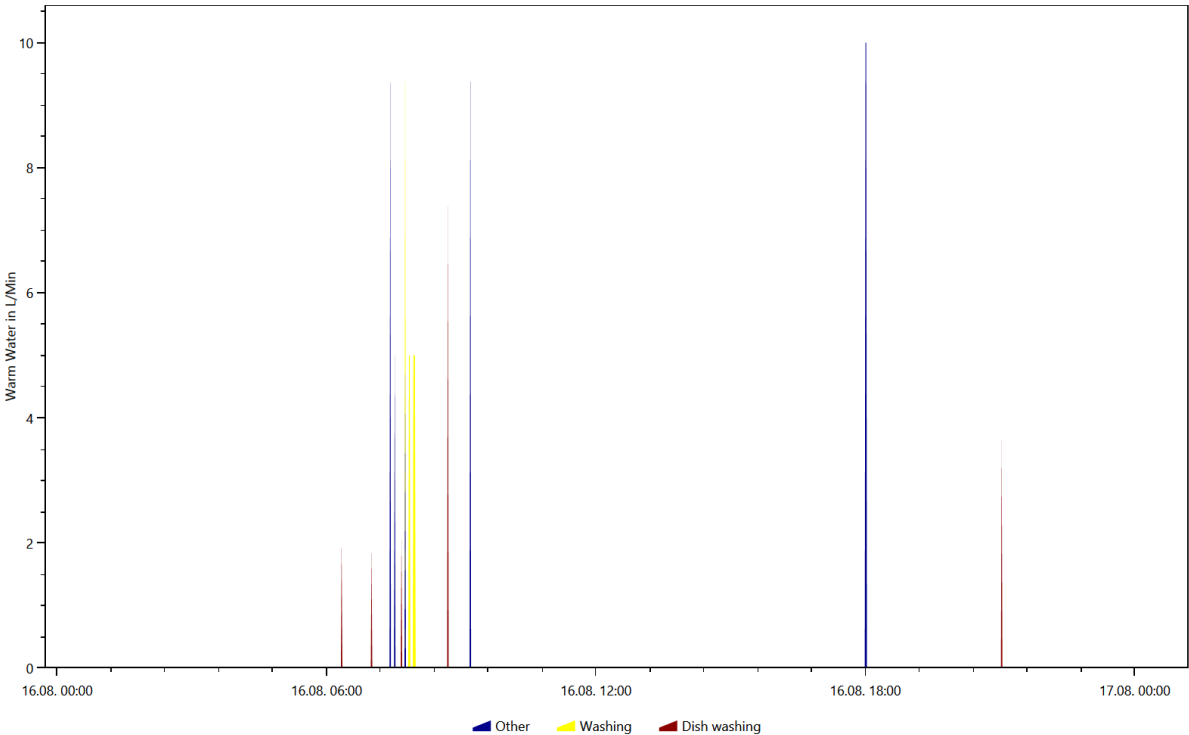
Warm Water, Coloring Scheme: Destatis Water Usage Statistics, Date 2016.9.21



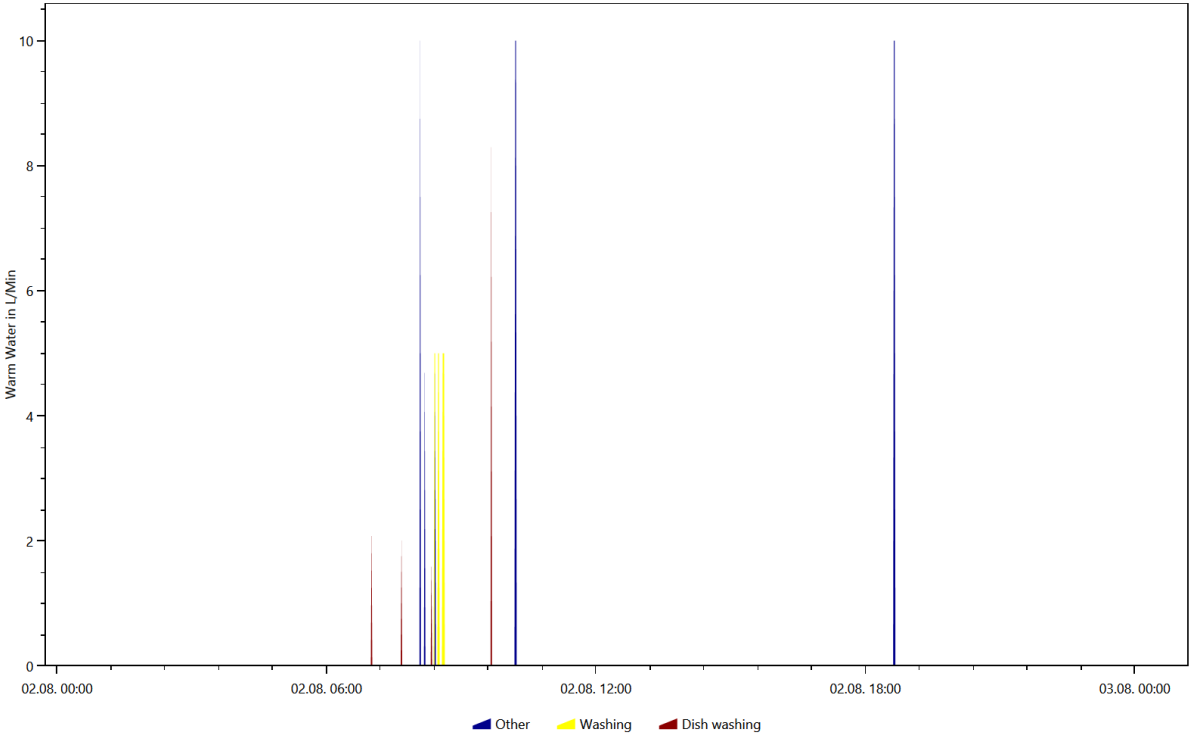
Warm Water, Coloring Scheme: Energieagentur.NRW Tags, Date 2016.4.9



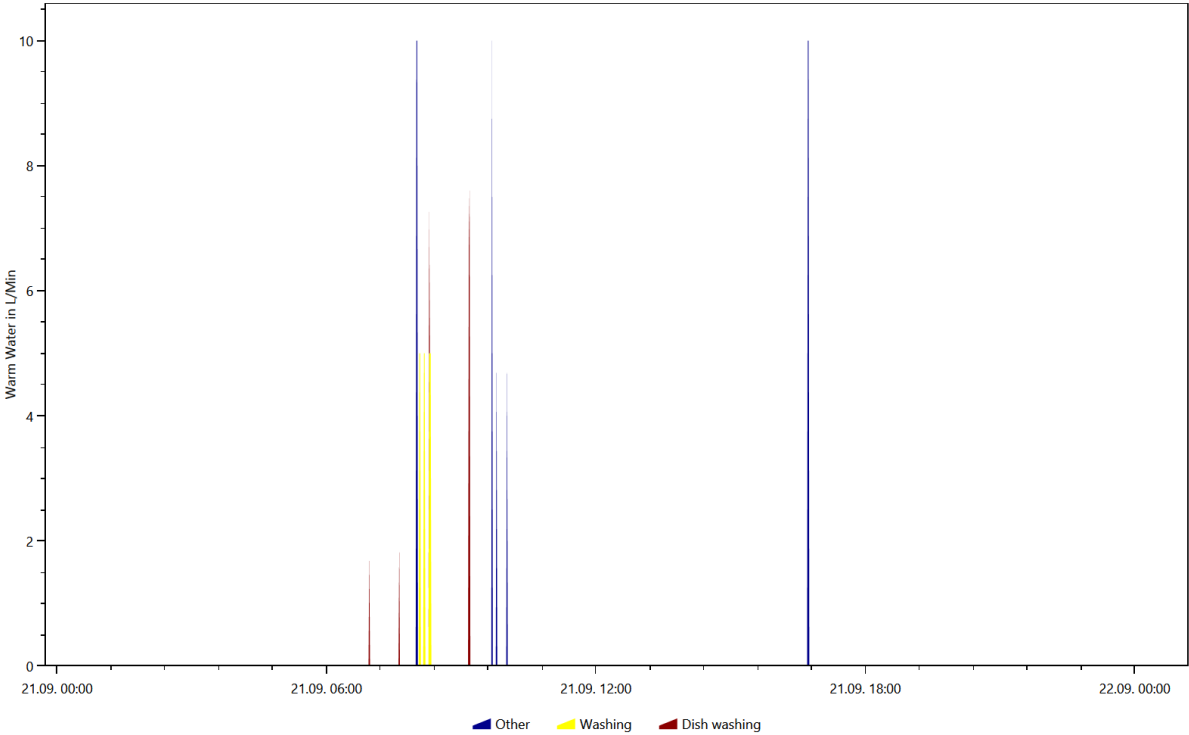
Warm Water, Coloring Scheme: Energieagentur.NRW Tags, Date 2016.8.16



Warm Water, Coloring Scheme: Energieagentur.NRW Tags, Date 2016.8.2



Warm Water, Coloring Scheme: Energieagentur.NRW Tags, Date 2016.9.21

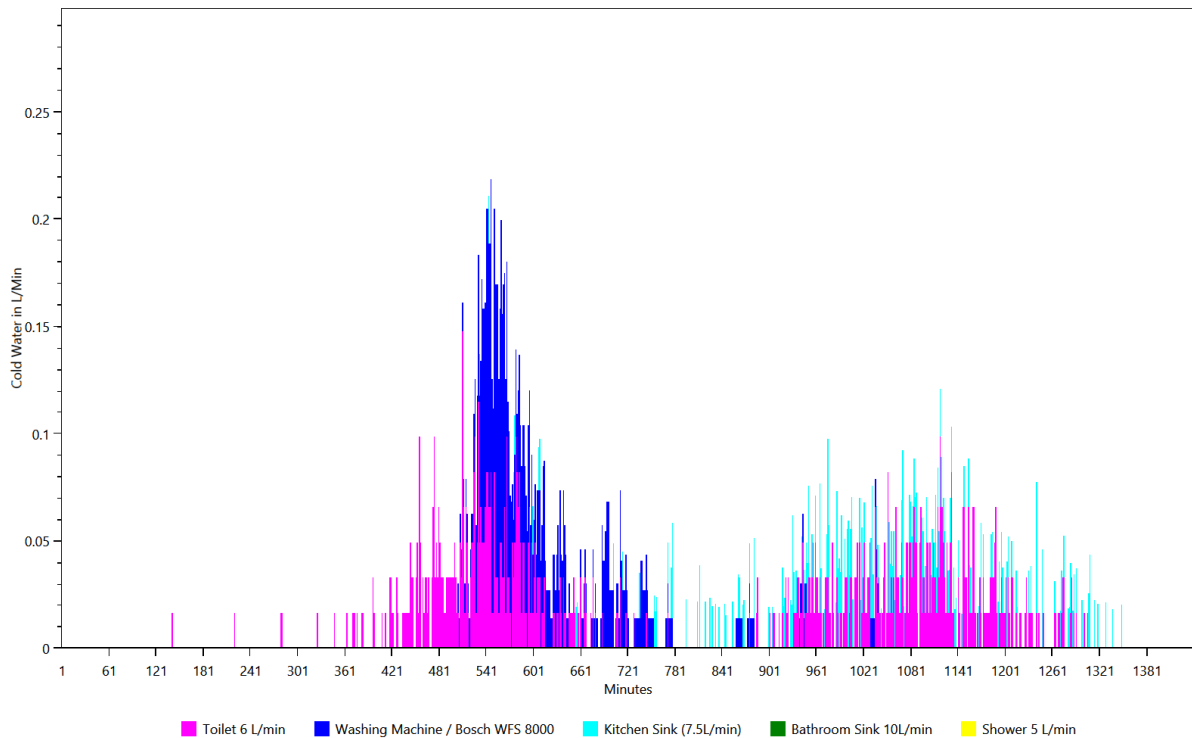


Overview of the time and power of the use per load type per device

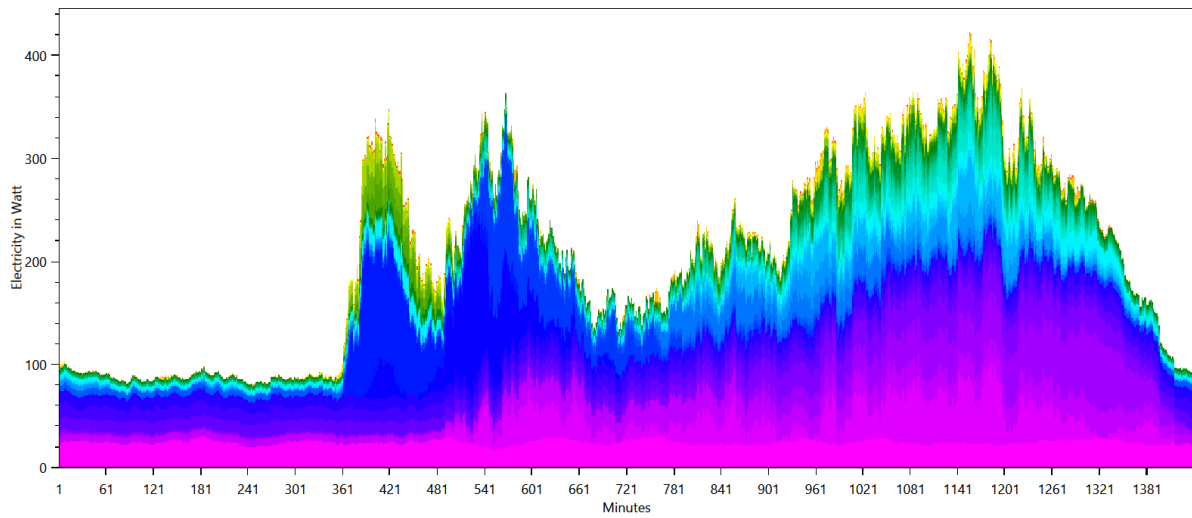
This is made from the files starting with: **TimeOfUseEnergyProfiles**

The time of use energy profiles show when each device was used and how much power it used.

Cold Water

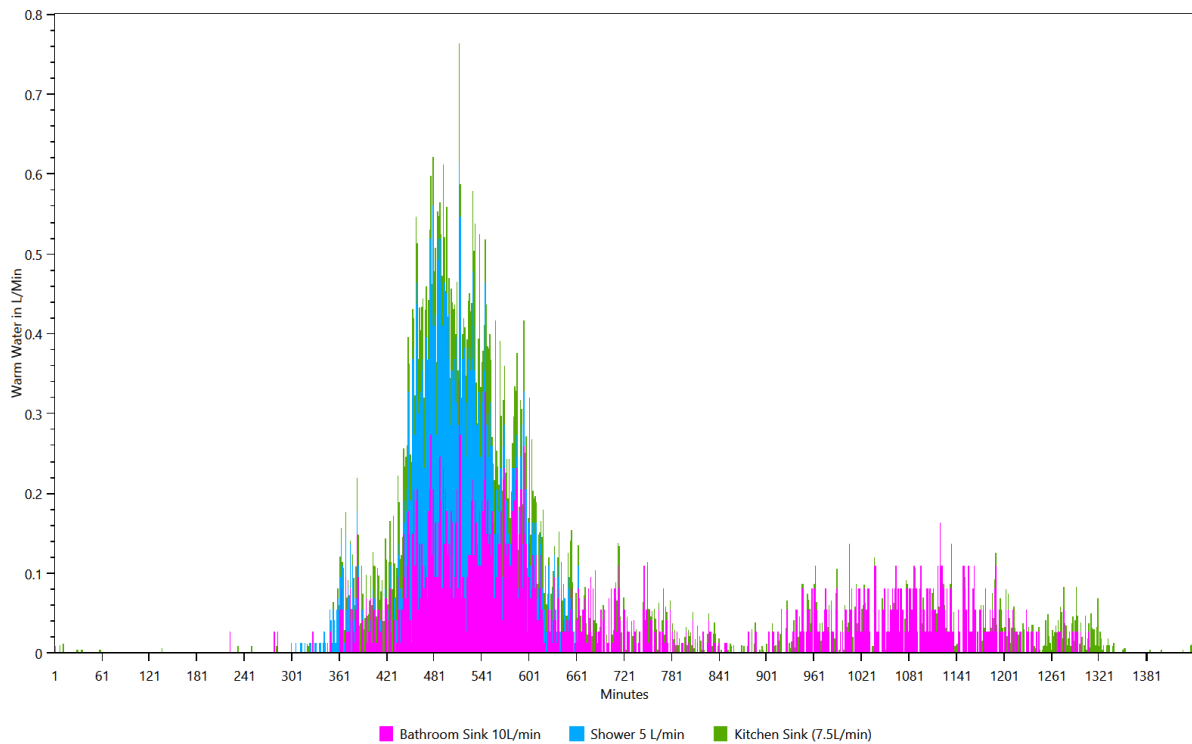


Electricity



- Bauknecht GTM 2511
- Miele DG 1450
- Laptop / ACER BT.00603.043 Replacement laptop battery
- Living Room Light (100W)
- TV / Phillips 32PFL7605H
- Microwave / Panasonic NN 5259
- Fridge with Freezer Exquisit kgc23060
- Yamaha RX-V667
- Hair Dryer Babyliiss 2000
- Coffee Machine / Braun Impression KF 600
- Washing Machine / Bosch WFS 8000
- Router O2 Box 6431
- Canister Vacuum Cleaner / Siemens Z6.0 VSZ61260
- Steam Cooker / Phillips HD9140
- Deep Fryer / DeLonghi F 28311.W Rotofritteuse
- Home Cinema System / Samsung HT-D5550
- Kitchen Light (100W)
- Hifi System / Sharp XL-HF300PH
- Kitchen Stove / Bauknecht Heko 750 PT Kitchen-stove right hind
- Kitchen Stove / Bauknecht Heko 750 PT Kitchen stove front right-semi aktiv
- Single Stove Plate
- Nintendo Wii
- SAT Receiver / Kathrein UFS913
- Fondue / Unold 48746 Asia
- CD/DVD Player / Phillips HDR3810/31
- Kitchen radio / AEG KRC 4323 CD
- Miele DA 249-2
- Toaster / Tefal Vario
- Juicer / Moulinex Vitafruit
- Ricecooker / Tristar RK-6112
- Egg Cooker / Russell Hobbs 14048-56 Stylo
- Bathroom Mirror Light 100W (Conventional)
- Miele DA 61
- Bathroom Light (60W)
- Kitchen Stove / Bauknecht Heko 750 PT Kitchen stove left hind- semi aktiv
- Electric Kettle / Petra WK288 1.5L
- Fancy Ceiling Lights with at least 3 Bulbs
- Electric Toothbrush Dondodent Professional Clean
- Food Slicer / DOMO Schneidemaschine DO521S
- Bedroom Light (20W)
- Immersion Blender Noah Hit Top

Warm Water



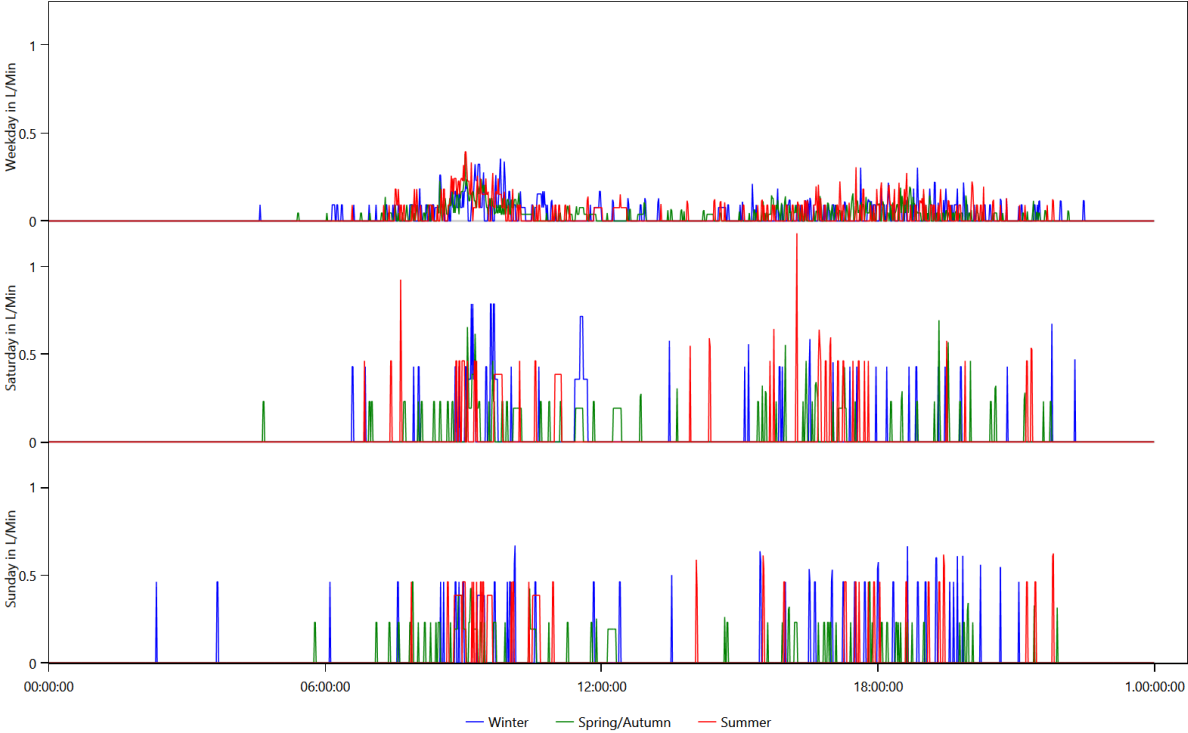
- Bathroom Sink 10L/min
- Shower 5 L/min
- Kitchen Sink (7.5L/min)

Energy use per load type during different seasons, split by weekday/saturday/sunday

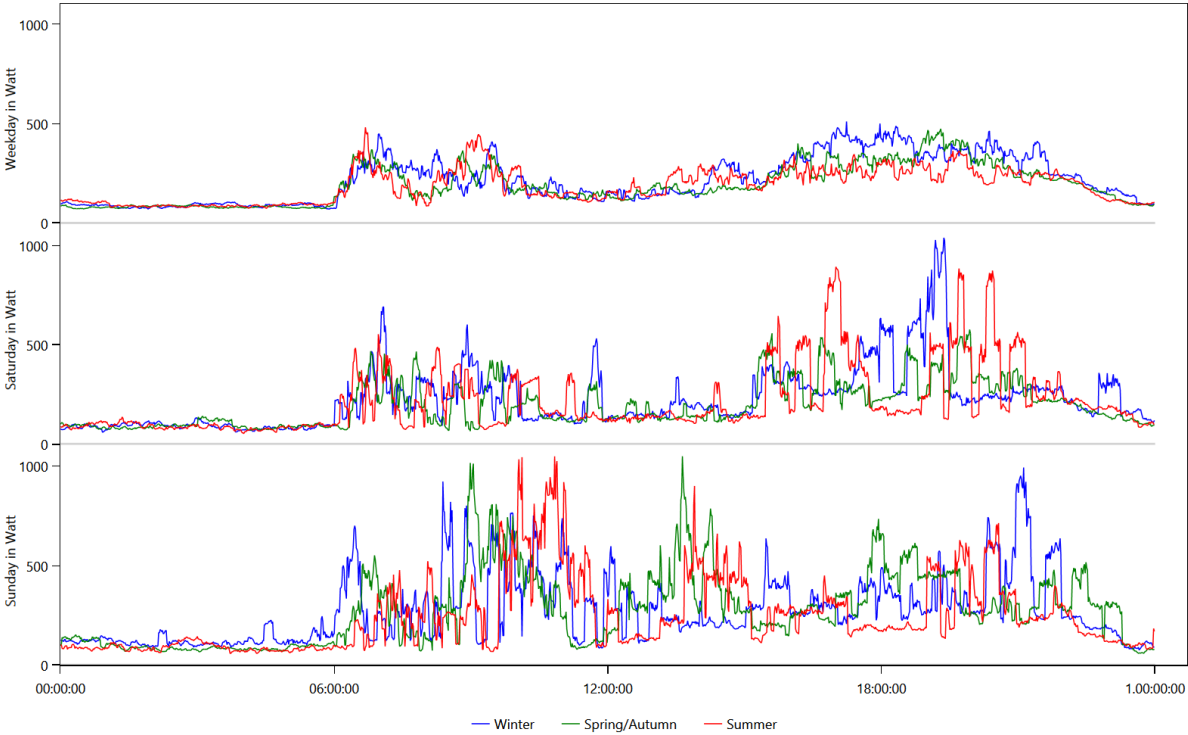
This is made from the files starting with: WeekdayProfiles

This graph shows for each load type the average power consumption per day grouped by season and weekday/saturday/sunday.

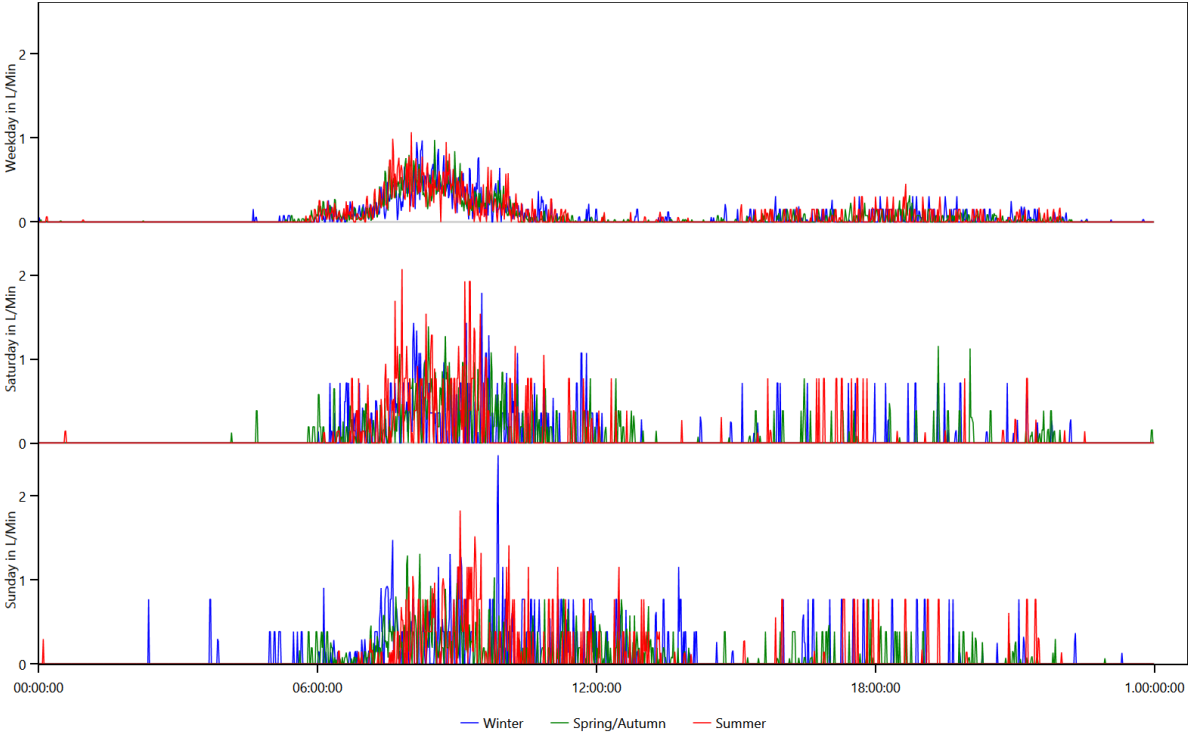
Cold Water



Electricity



Warm Water

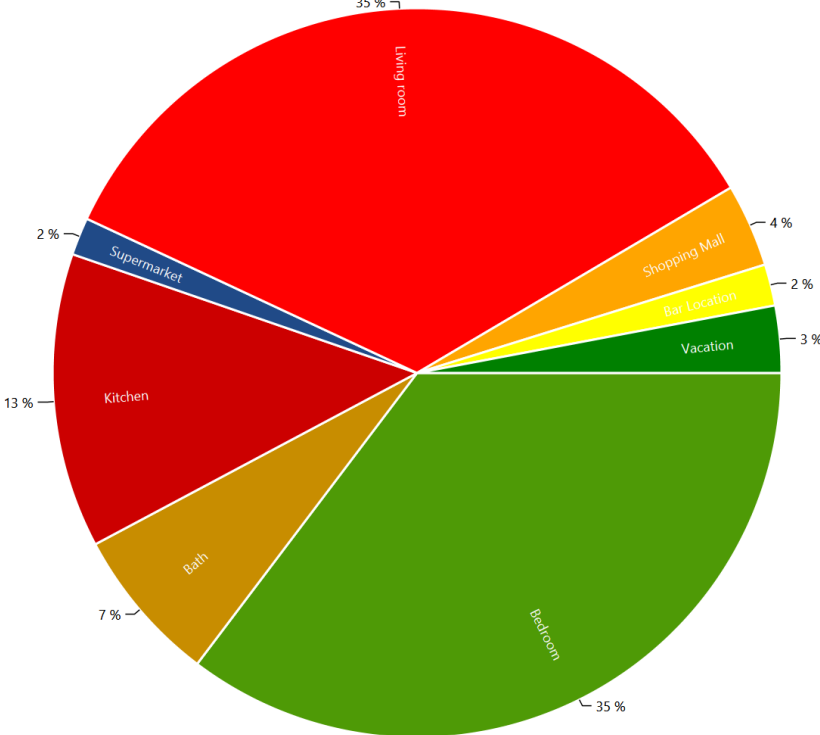


Location Distribution per Person

This is made from the files starting with: LocationStatistics

These charts show where the persons spend their time.

CHR26 Florence (27 Female)



Actions.csv

This is made from the files starting with: Actions

These files show the actions of each person in the household. The content looks like this:

Actions.HH0.csv

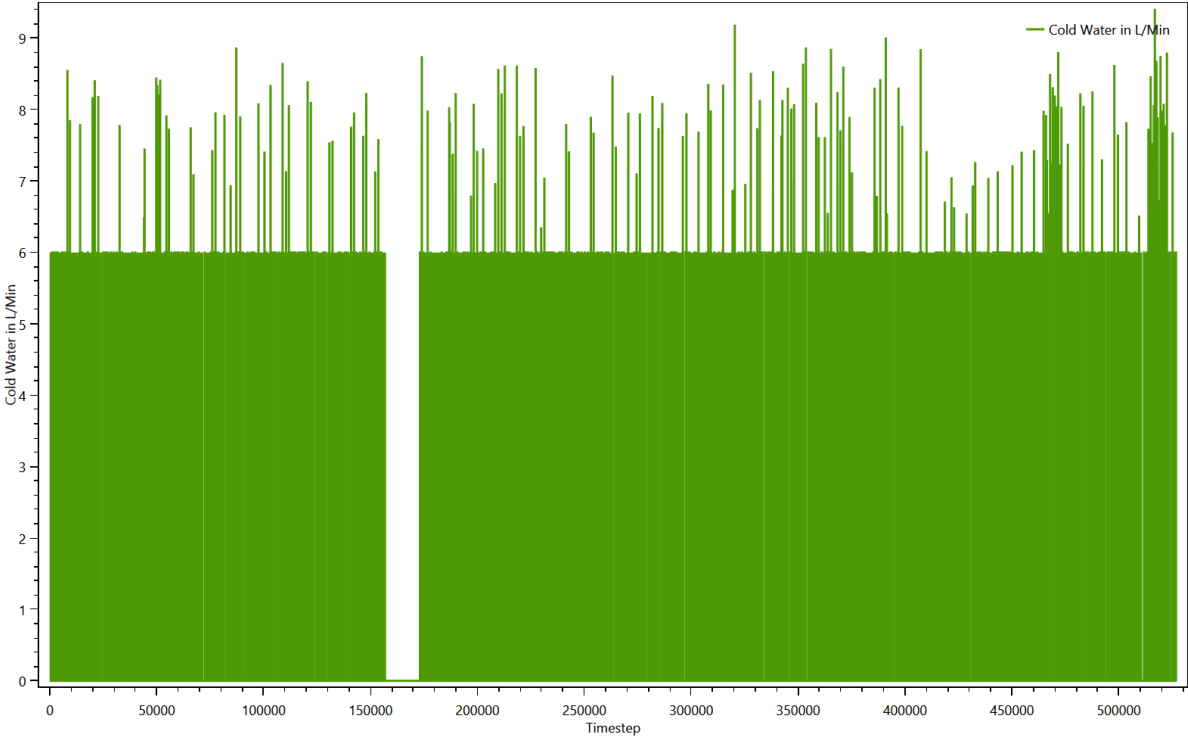
Time step;Calendertime;Person;Selected affordance;Affordance Category;Is Sick
0;01.01.2016 00:00;CHR26 Florence (27/Female);sleep bed 08 (08 h);sleep;False;
417;01.01.2016 06:57;CHR26 Florence (27/Female);go to the toilet;hygiene;False;
422;01.01.2016 07:02;CHR26 Florence (27/Female);eat breakfast (1 h);cooking;False;
488;01.01.2016 08:08;CHR26 Florence (27/Female);get ready in the morning (women);hygiene;False;
510;01.01.2016 08:30;CHR26 Florence (27/Female);wash 2 dishes by hand;cleaning;False;
539;01.01.2016 08:59;CHR26 Florence (27/Female);go shopping for food in the supermarket (1.5
h);shopping;False;
640;01.01.2016 10:40;CHR26 Florence (27/Female);take a shower with hair washing (women) (5 min hair
drying);hygiene;False;
690;01.01.2016 11:30;CHR26 Florence (27/Female);take a nap;sleep;False;
761;01.01.2016 12:41;CHR26 Florence (27/Female);rest for 10 min;sleep;False;
772;01.01.2016 12:52;CHR26 Florence (27/Female);clean the bath;cleaning;False;
836;01.01.2016 13:56;CHR26 Florence (27/Female);use the laptop for Internet, Movie, Music, News (2
h);Active Entertainment (Computer, Internet etc);False;
948;01.01.2016 15:48;CHR26 Florence (27/Female);go to the toilet;hygiene;False;
954;01.01.2016 15:54;CHR26 Florence (27/Female);go shopping (4 h);Outside recreation;False;
1172;01.01.2016 19:32;CHR26 Florence (27/Female);make roulades and eat them;cooking;False;
1312;01.01.2016 21:52;CHR26 Florence (27/Female);watch a movie for 1 h 30 min with home cinema
system;Passive Entertainment (TV etc.);False;
1413;01.01.2016 23:33;CHR26 Florence (27/Female);sleep bed 08 (08 h);sleep;False;
1927;02.01.2016 08:07;CHR26 Florence (27/Female);eat breakfast (1 h);cooking;False;
1986;02.01.2016 09:06;CHR26 Florence (27/Female);wash 1 dishes by hand;cleaning;False;
2019;02.01.2016 09:39;CHR26 Florence (27/Female);go to the toilet;hygiene;False;

Sum Profiles

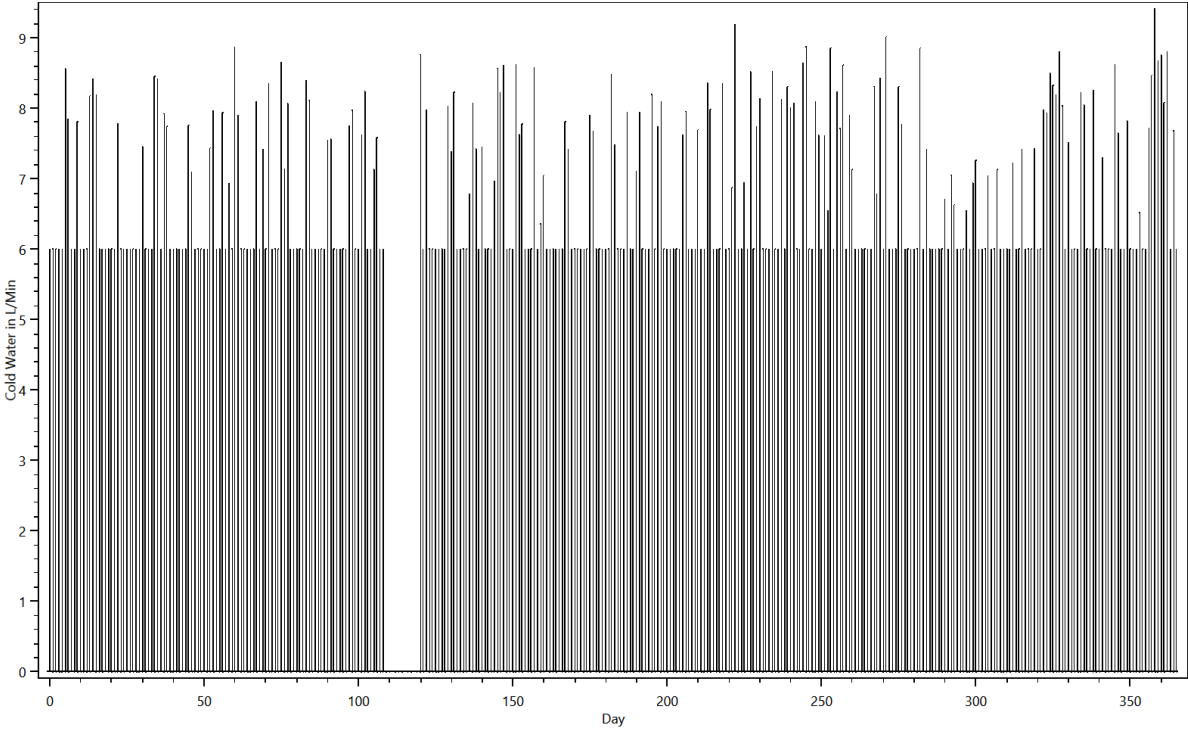
This is made from the files starting with: SumProfiles

This shows the energy use during the simulation.

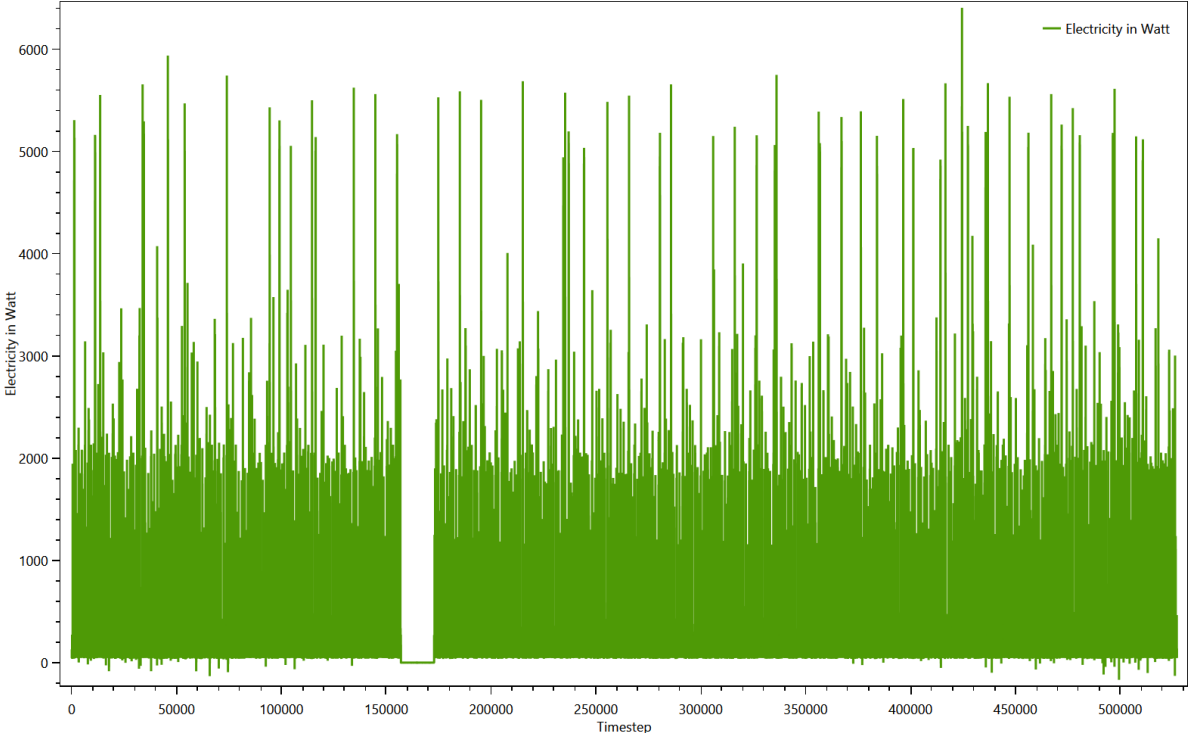
Summed up curve for Cold Water from SumProfiles.Cold Water.png



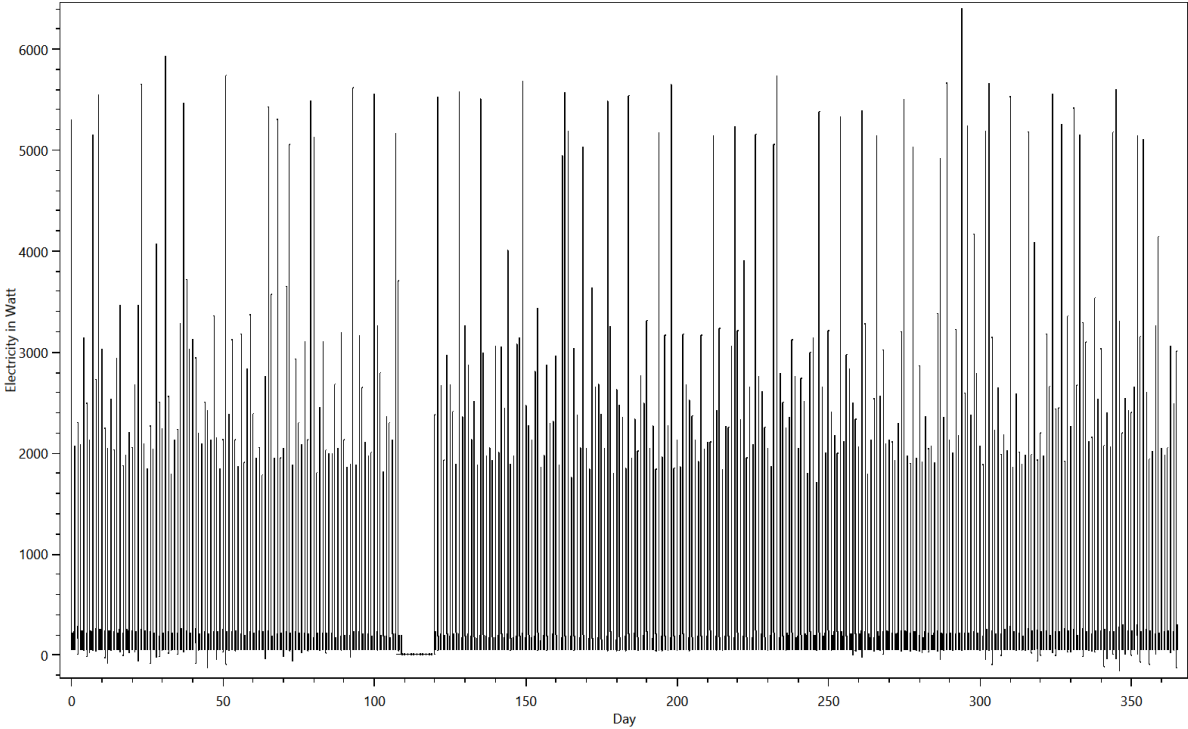
Summed up curve for Cold WaterMinMax from SumProfiles.Cold WaterMinMax.png



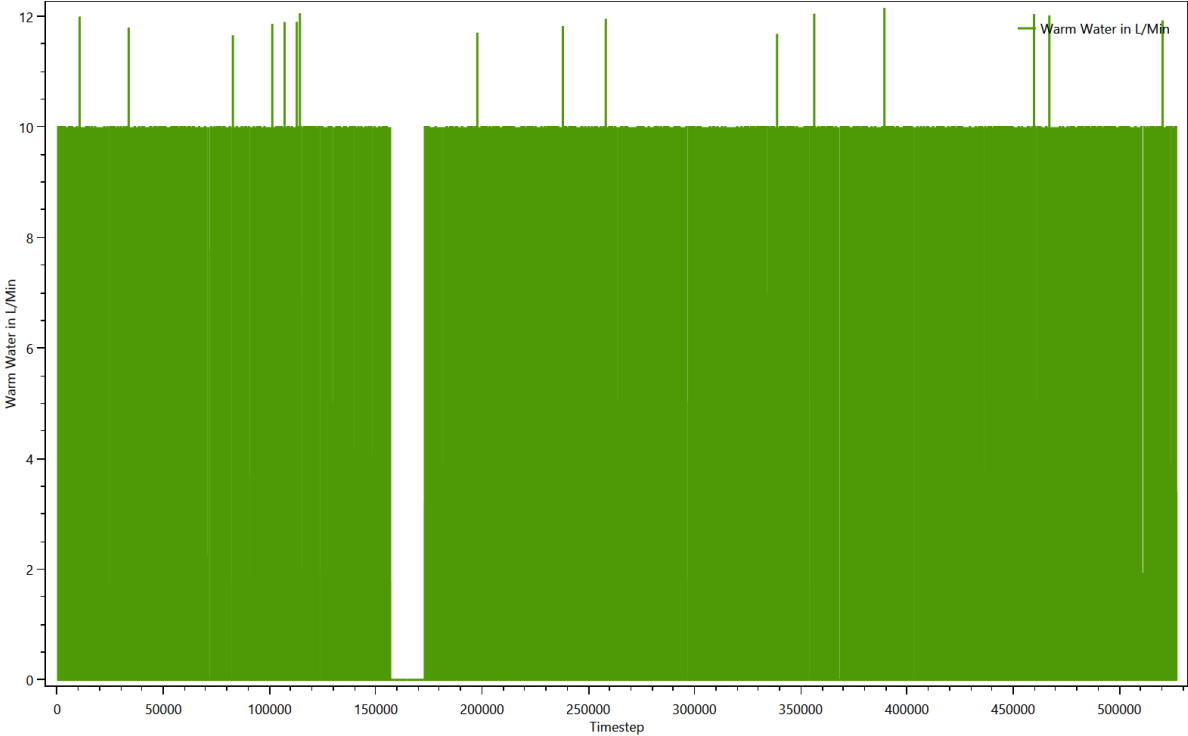
Summed up curve for Electricity from SumProfiles.Electricity.png



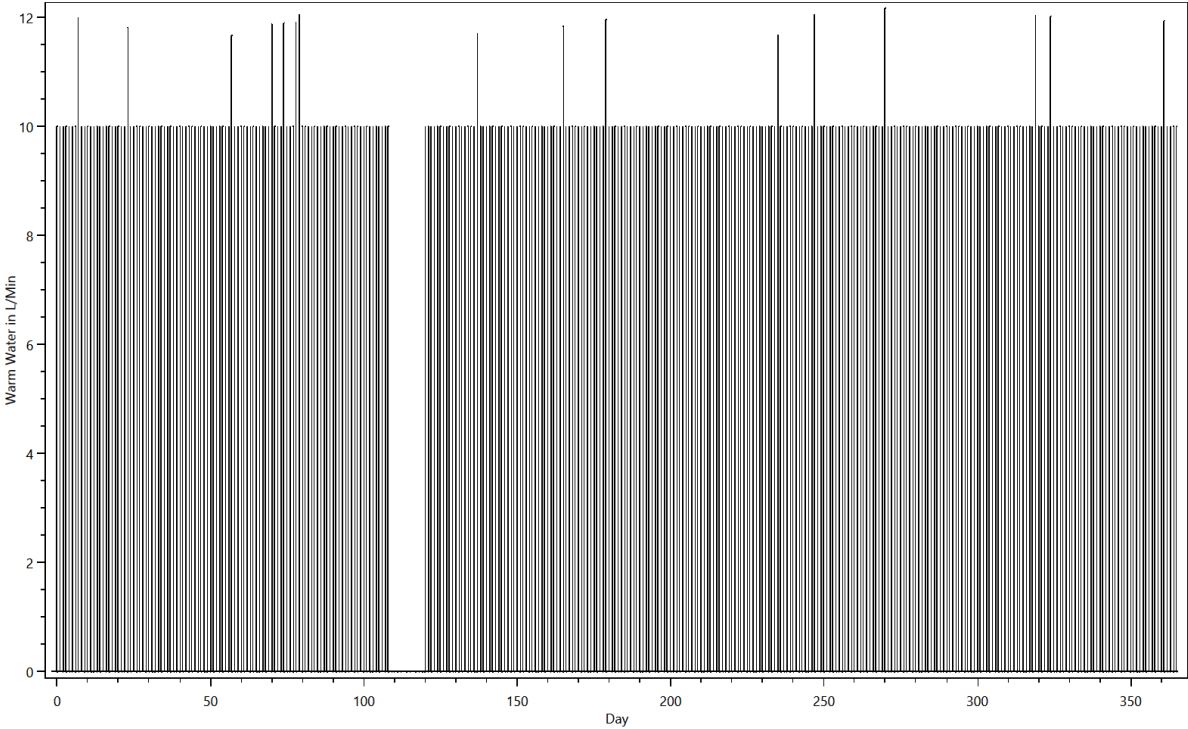
Summed up curve for ElectricityMinMax from SumProfiles.ElectricityMinMax..png



Summed up curve for Warm Water from SumProfiles.Warm Water.png



Summed up curve for Warm WaterMinMax from SumProfiles.Warm WaterMinMax..png



Time Profiles

This is made from the files starting with: Time Profiles

These files show which time profiles were used for each device and how often. The content looks like this:

TimeProfiles.HH0.CHR26 Single woman under 30 years without work 0.txt

Device;Load Type;Profile;Number of Activations

Bar;None;04 h 0 min 100% [Synthetic];41

Bathroom Light (60W);Electricity;Bath - light [Synthetic for Light Device];300

Bathroom Mirror Light 100W (Conventional);Electricity;Bath - light [Synthetic for Light Device];300

Bathroom Sink 10L/min;Warm Water;0 h 01 min 100% [Synthetic];959

Bathroom Sink 10L/min;Warm Water;0 h 01 min 50% [Synthetic];486

Bauknecht GTM 2511;Electricity;0 h 01 min 100% [Synthetic];18

Bauknecht GTM 2511;Electricity;05 h 0 min Fridge, 1h 100%, 4h 0% [Synthetic];1718

Bed 8;None;08 h 0 min 100% [Synthetic];355

Bedroom Light (20W);Electricity;Bedroom - light [Synthetic for Light Device];165

CD/DVD Player / Phillips HDR3810/31;Electricity;01 h 30 min 100% [Synthetic];216

CD/DVD Player / Phillips HDR3810/31;Electricity;02 h 0 min 100% [Synthetic];77

CD/DVD Player / Phillips HDR3810/31;Electricity;Standby TV / Receiver 1 h 0 min 3% [Synthetic];8514

Canister Vacuum Cleaner / Siemens Z6.0 VSZ61260;Electricity;0 h 30 min 100% [Synthetic];78

Chair;None;0 h 10 min 100% [Synthetic];535

Cleanser;None;01 h 0 min 100% [Synthetic];104

Cloth Drying Rack;None;0 h 20 min 100% [Synthetic];73

Coffee Machine / Braun Impression KF 600;Electricity;0 h 10 min 100% [Synthetic];358

Couch;None;01 h 0 min 100% [Synthetic];357

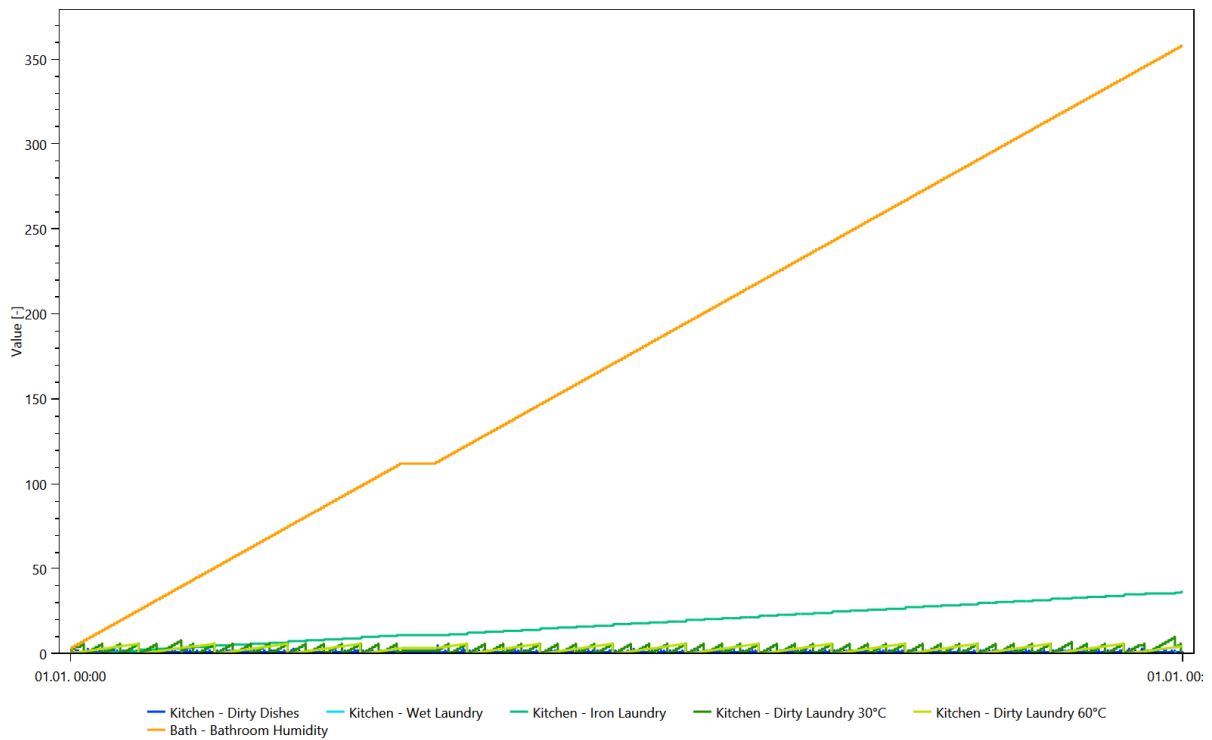
Couch;None;02 h 0 min 100% [Synthetic];18

Variables

This is made from the files starting with: Variablelogfile

The variables are used to keep track of things like dirty laundry, dirty dishes and the amount of laundry to iron. They are used to ensure that for example the dishwasher is only turned on if there are sufficient dirty dishes. One chart shows the first 25000 timesteps of the contents of all variables, the other shows the entire time span.

Variables



Variables

