

Overview of the results of the household CHR31 Single, Retired Woman 0

Calculation Time

Freitag, 1. Januar 2016 - Sonntag, 1. Januar 2017

Energy Intensity: EnergySaving

Seed 1304

LoadProfileGenerator 5.8.0.16019

by Noah Pflugradt

<http://www.loadprofilegenerator.de>

Rendering date:16.12.2016 09:17:42

Table of Contents

Totals.....	3
Persons.....	5
Activity Frequency Charts.....	6
Activity Distribution per Person.....	7
Time Use per Person per Affordance Per Person.....	8
Energy use per person per affordance.....	10
Time Use per Person Per Affordance according to different category definitions.....	12
Overview of the actions of each member of the household.....	14
Overview of the time of the use per load type per device.....	15
Energy/Resource use distribution per load type per affordance.....	17
Energy use for each load type for each device.....	22
Duration curve for each device for each load type.....	26
Duration curve for each load type.....	28
Grouped energy use for each load type for each device.....	30
Example of the device profiles for each load type.....	34
Overview of the time and power of the use per load type per device.....	48
Energy use per load type during different seasons, split by weekday/saturday/sunday.....	50
Location Distribution per Person.....	52
Actions.csv.....	53
Sum Profiles.....	54
Time Profiles.....	58
Variables.....	59

Totals

Totals for each Loadtype

Load Type	Value	Unit
Cold Water	27925.51	L
Electricity	1015.82	kWh
Warm Water	41292.50	L

Totals for each Loadtype per Day

Load Type	Value	Unit
Cold Water	76.30	L
Electricity	2.78	kWh
Warm Water	112.82	L

Minimum and Maximum for each Loadtype

Household	Minimum	Maximum	Unit
Cold Water	0.00	15.00	L/Min
Electricity	0.16	5070.31	Watt
Warm Water	0.00	12.50	L/Min

Totals for each Loadtype per Person

Load Type	Value	Unit
Cold Water	27925.51	L
Electricity	1015.82	kWh

Warm Water	41292.50	L
------------	----------	---

Totals for each Loadtype per Person per Day

Load Type	Value	Unit
Cold Water	76.30	L
Electricity	2.78	kWh
Warm Water	112.82	L

Persons

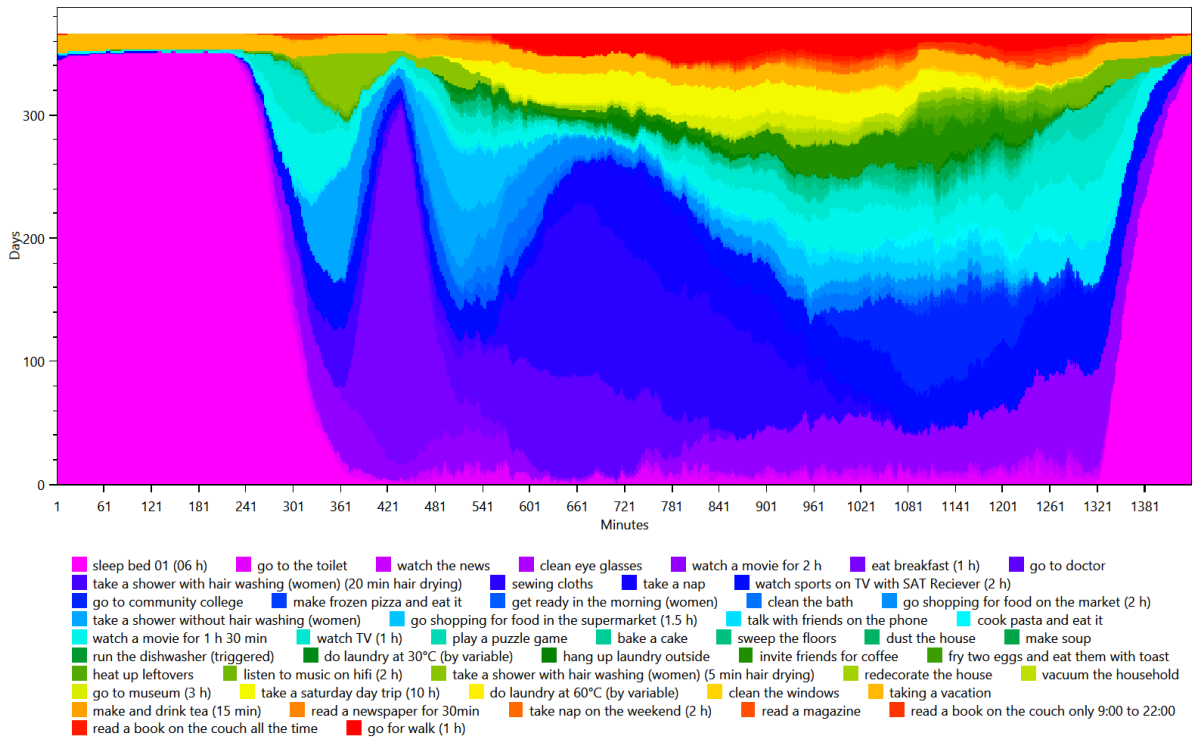
- HHO
 - CHR31 Monika (68/Female)(68/Female)

Activity Frequency Charts

This is made from the files starting with: ActivityFrequenciesPerMinute

These charts show an ordered distribution of times of the activities of each person. This helps with judging quickly if a person is sleeping correctly and if they are going to work regularly.

HH0 - CHR31 Monika (68 Female)

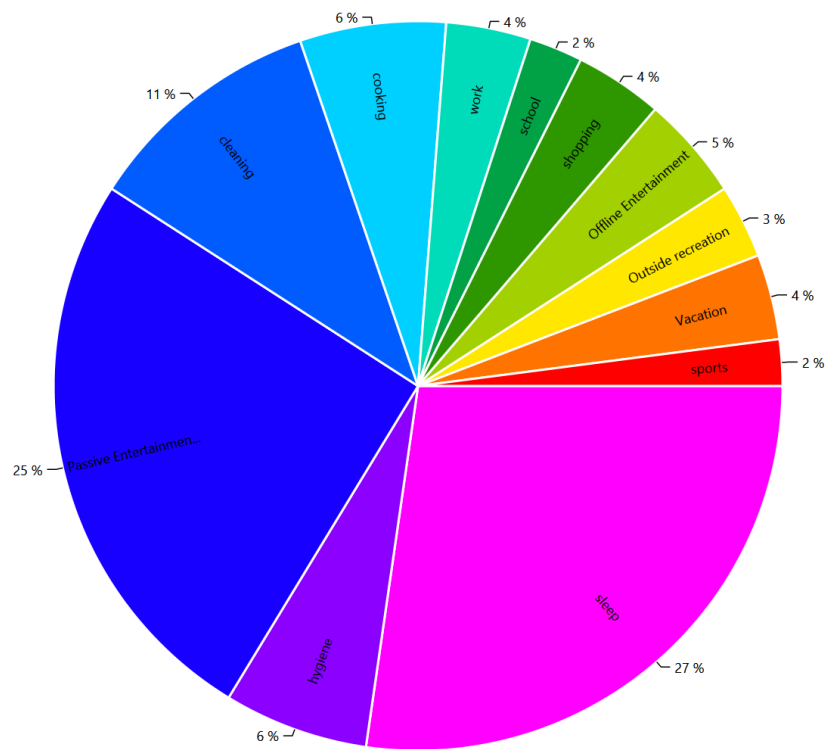


Activity Distribution per Person

This is made from the files starting with: ActivityPercentage

This shows the distribution of the activities, grouped by the affordance AffordanceToCategories.

HH0 - CHR31 Monika (68 Female)

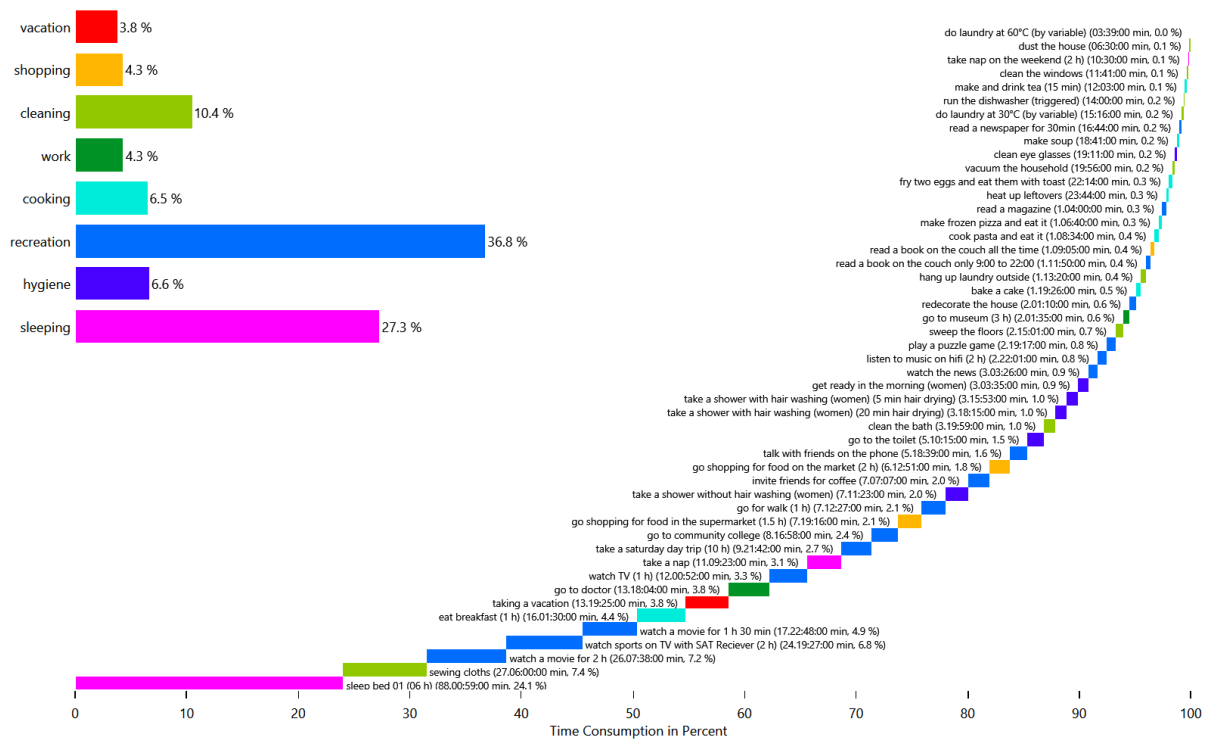


Time Use per Person per Affordance Per Person

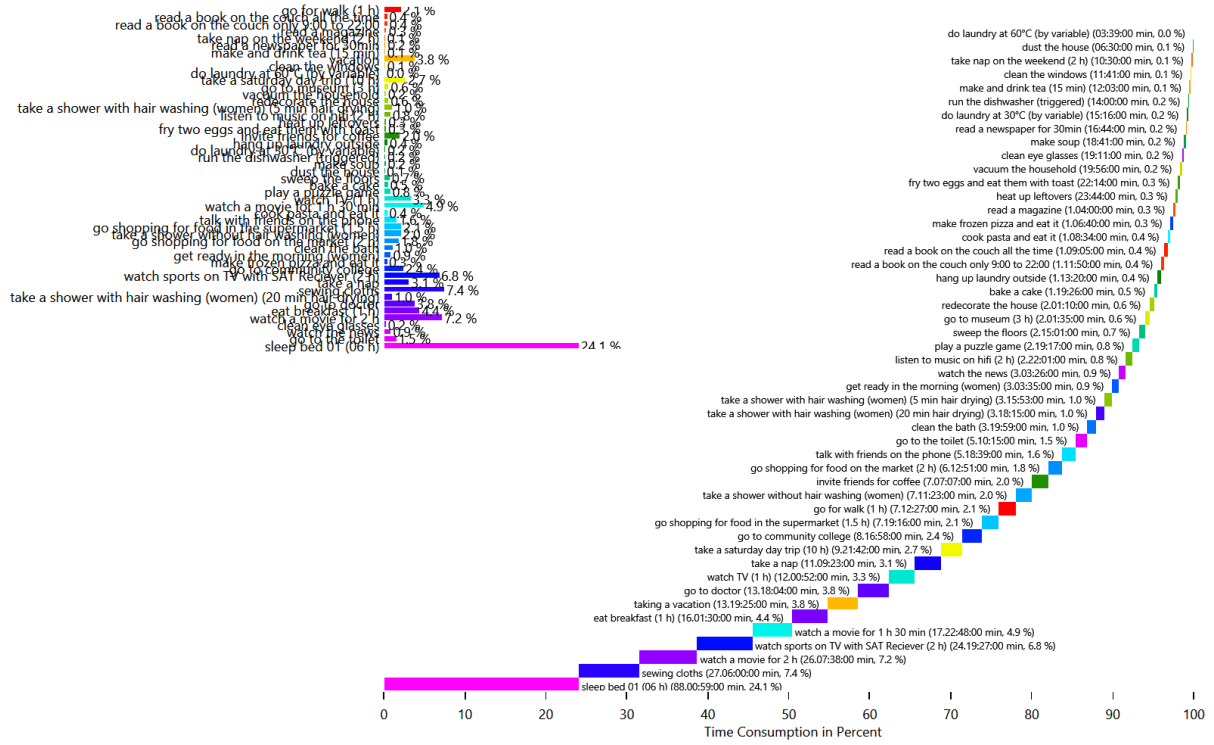
This is made from the files starting with: AffordanceTimeUse

These charts show how the people in the household use their time. This shows the individual affordances to help find problems in the household definition.

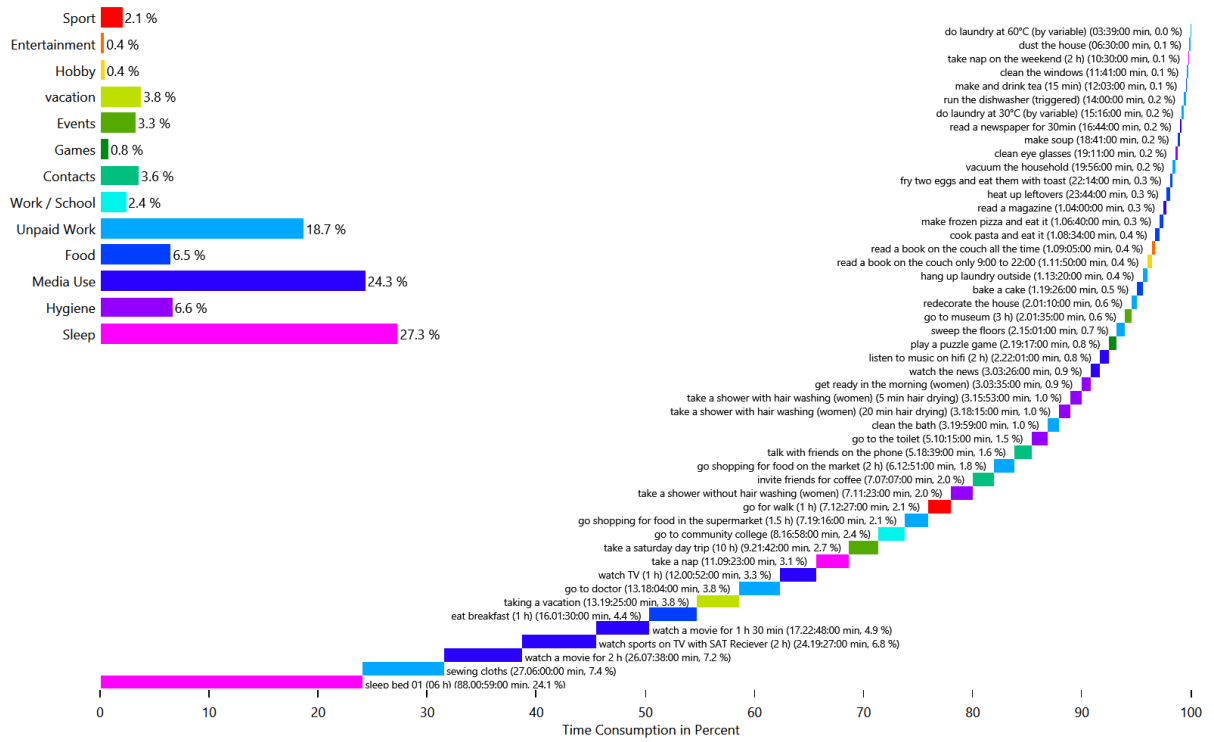
HH0 - CHR31 Monika (68 Female)



HH0 - CHR31 Monika (68 Female)



HH0 - CHR31 Monika (68 Female)

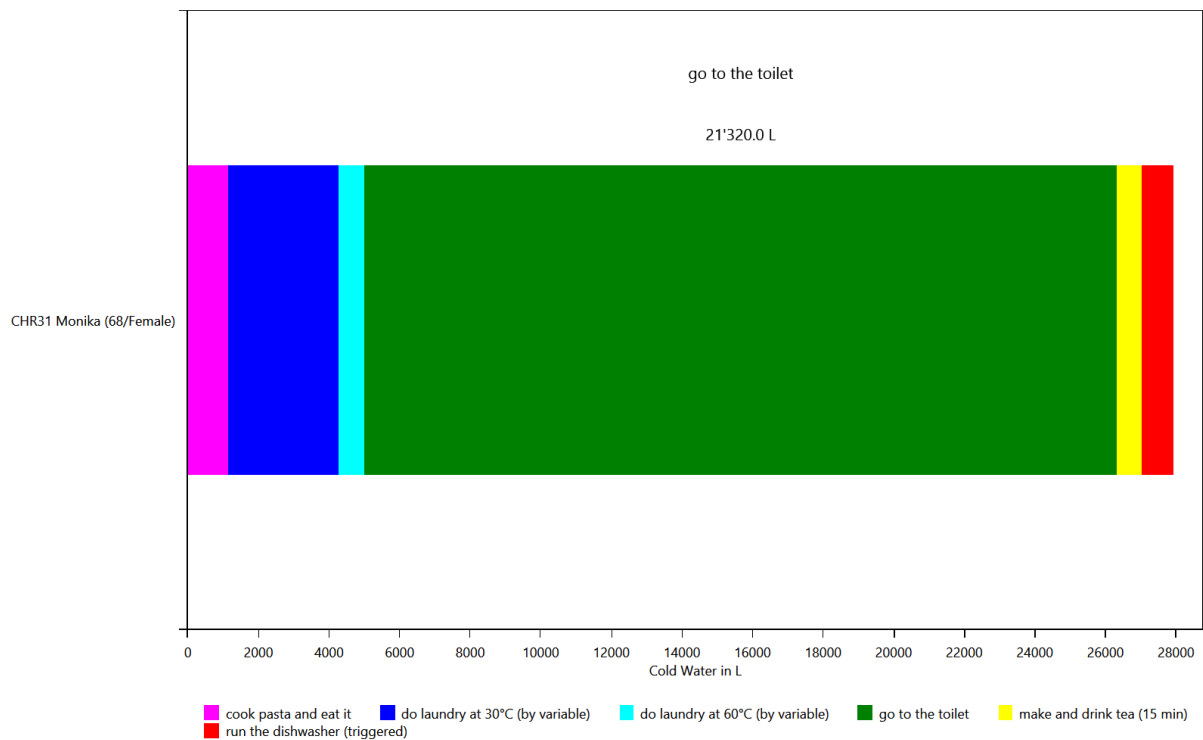


Energy use per person per affordance

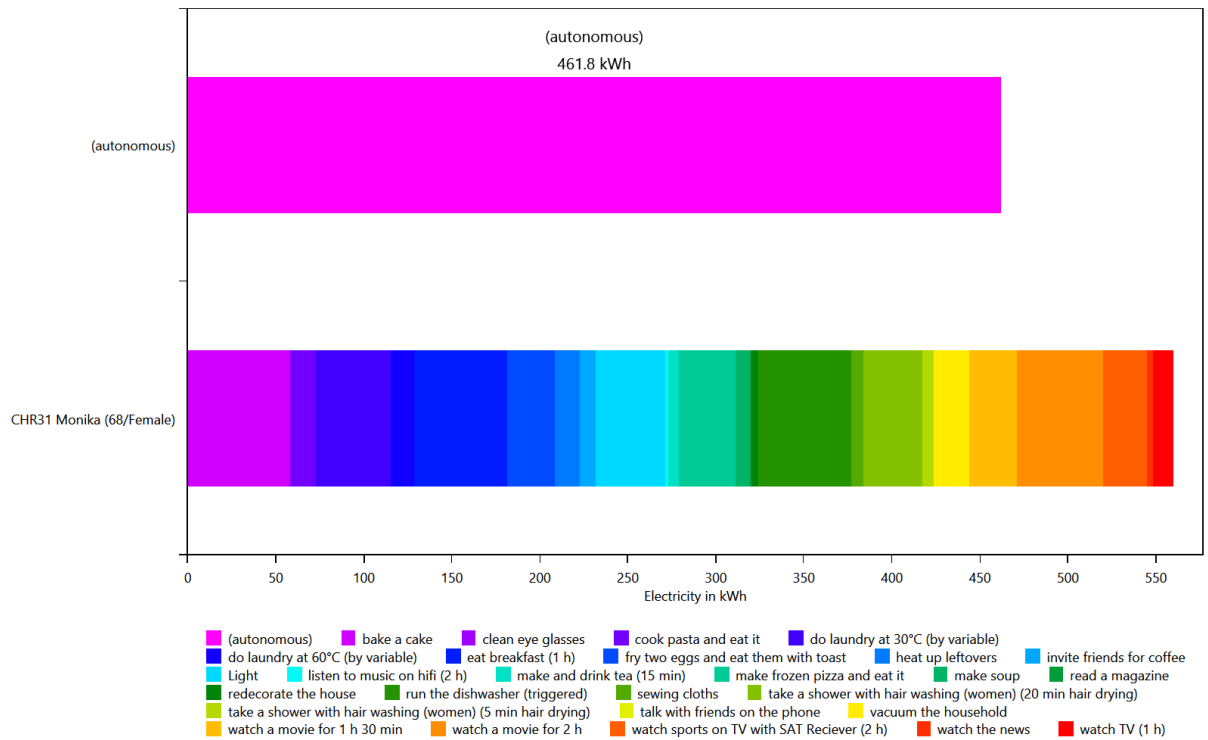
This is made from the files starting with: `AffordanceEnergyUsePerPerson`

This shows the distribution of the energy/resource use to each affordance by load type and by person. This helps with figuring out if a person is using too much electricity.

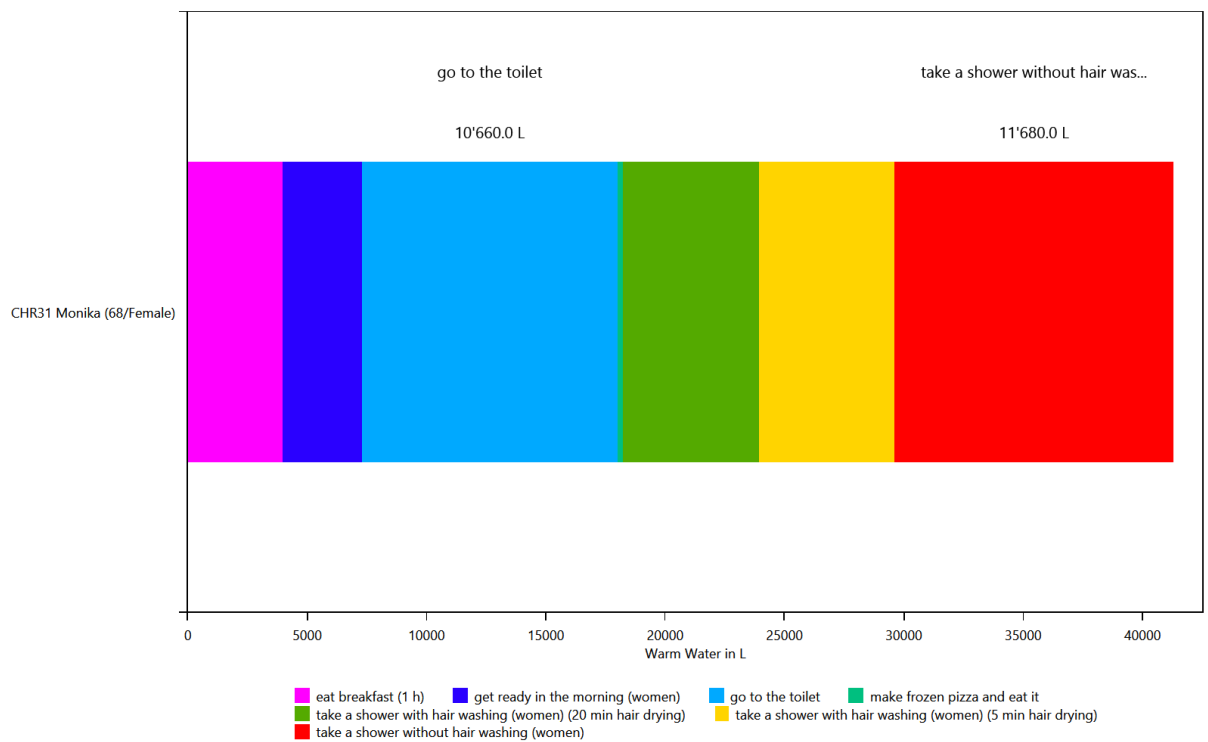
HH0 - Cold Water



HH0 - Electricity



HH0 - Warm Water

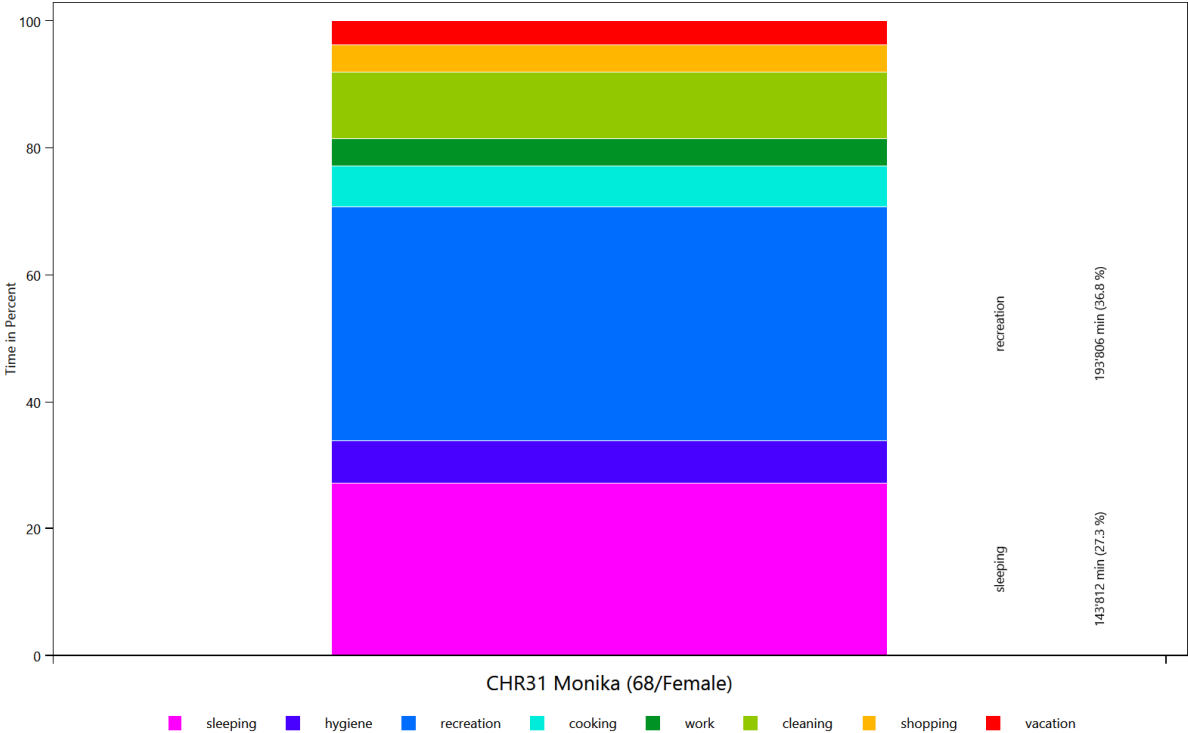


Time Use per Person Per Affordance according to different category definitions

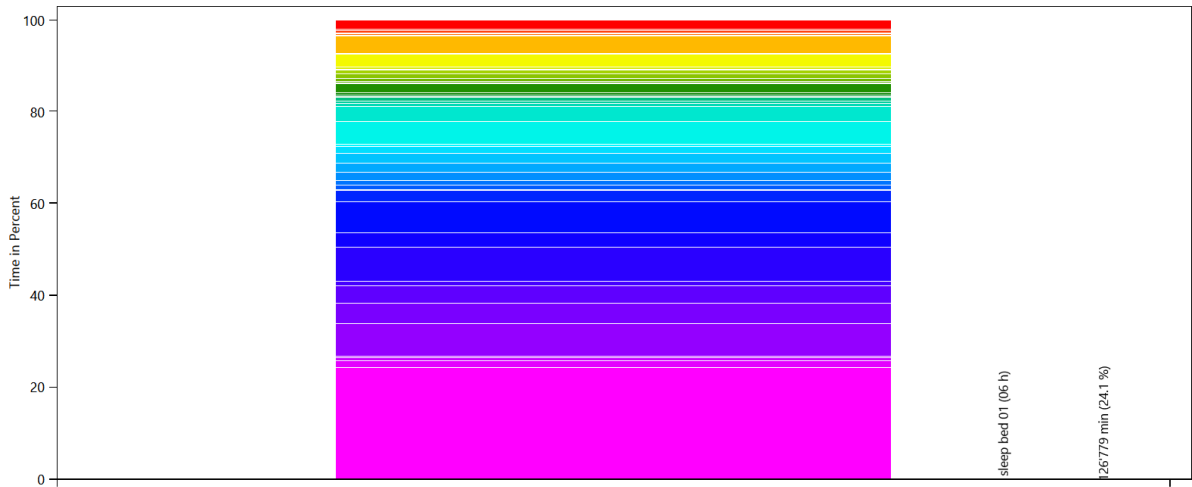
This is made from the files starting with: AffordanceTaggingSet

These charts show how the people in the household use their time. To help with analysis, the activities can be grouped by various criteria. This is done with the affordance tagging sets in the LPG.

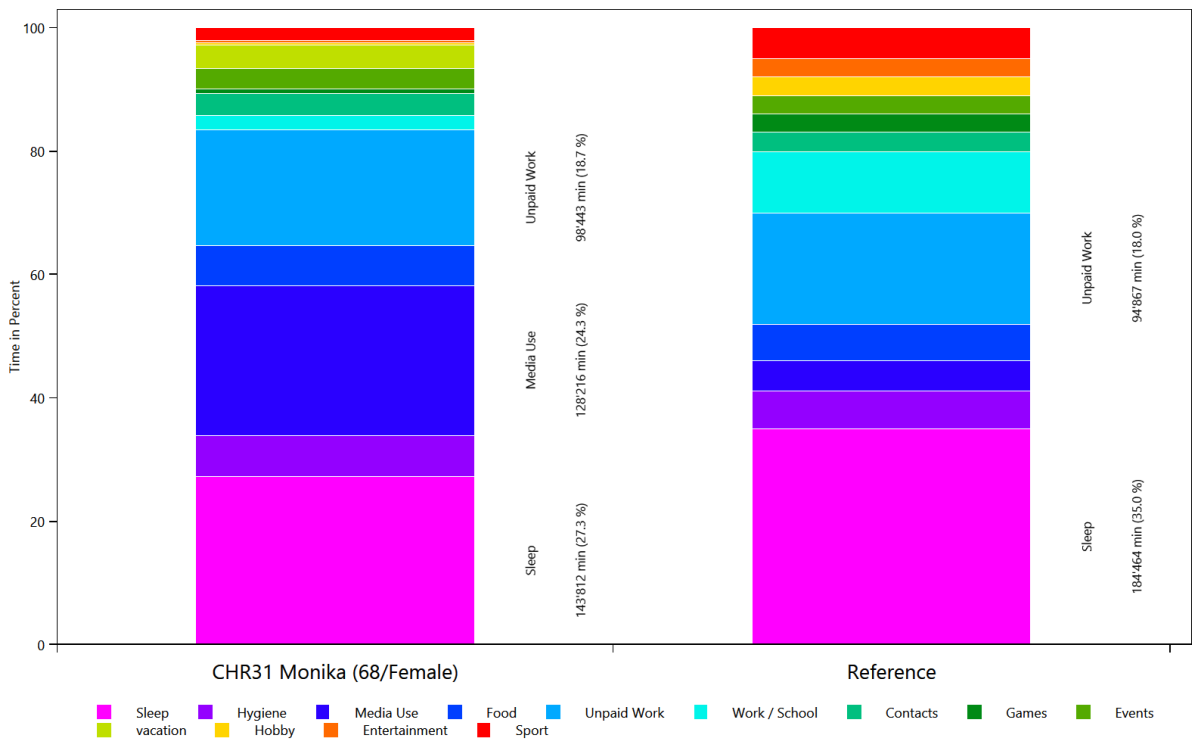
Basic Tagging - HH0



Tagging Set For Planning - HH0



Wo bleibt die Zeit - HH0

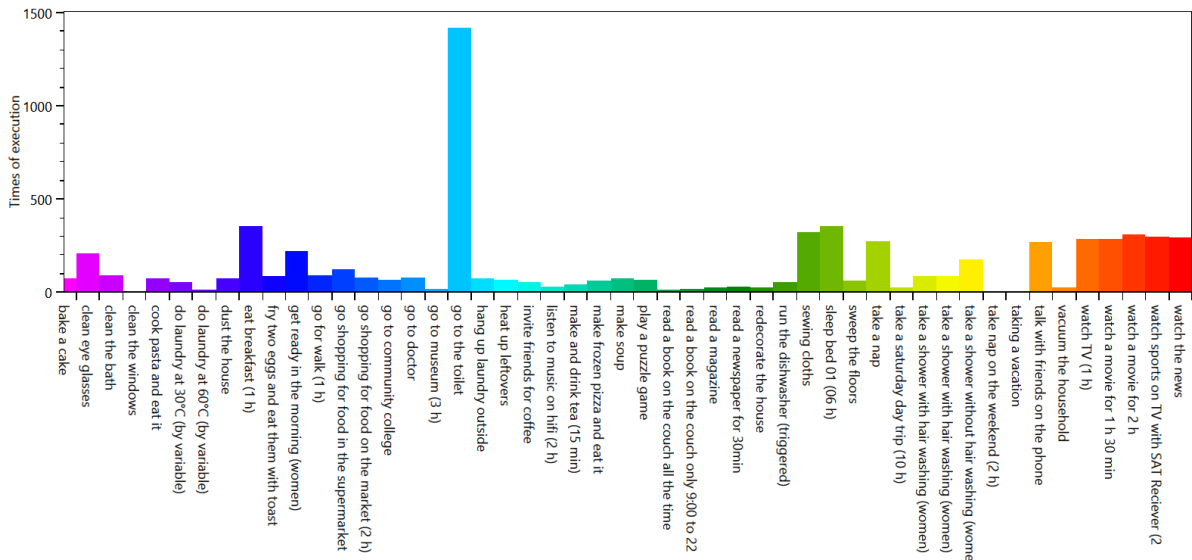


Overview of the actions of each member of the household

This is made from the files starting with: ExecutedActionsOverviewCount

These charts show how often each affordance was executed.

HH0 - CHR31 Monika (68 Female)

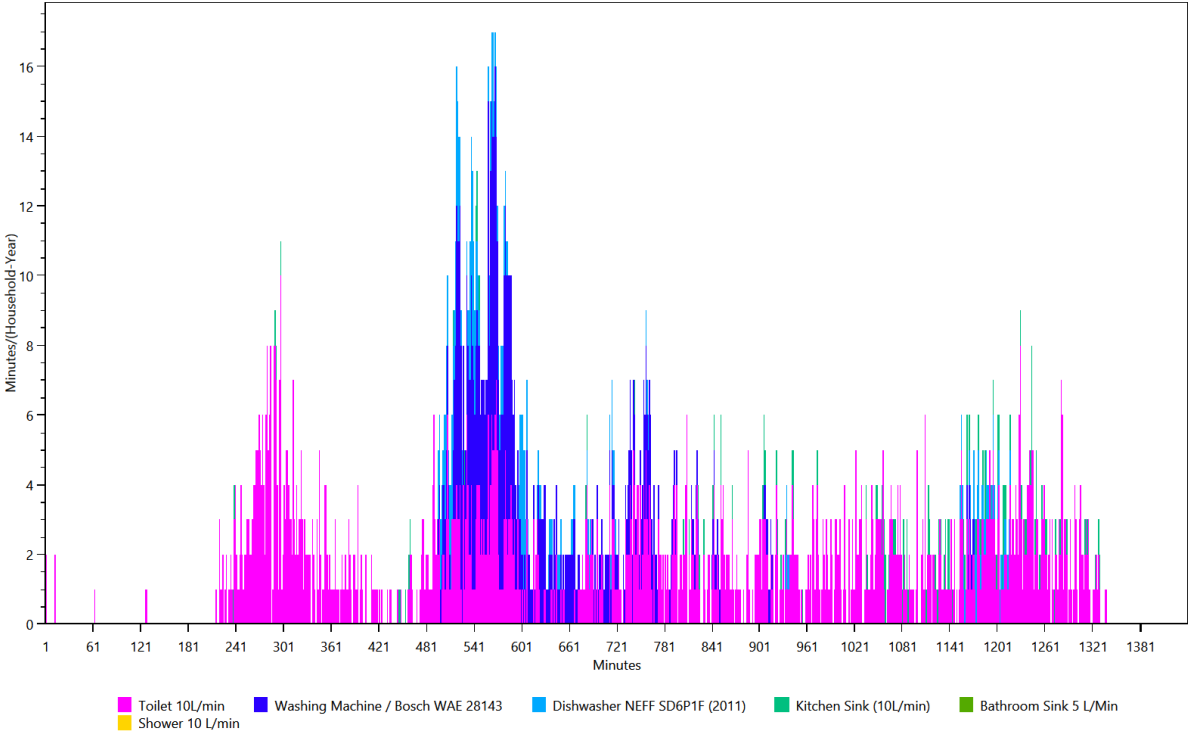


Overview of the time of the use per load type per device

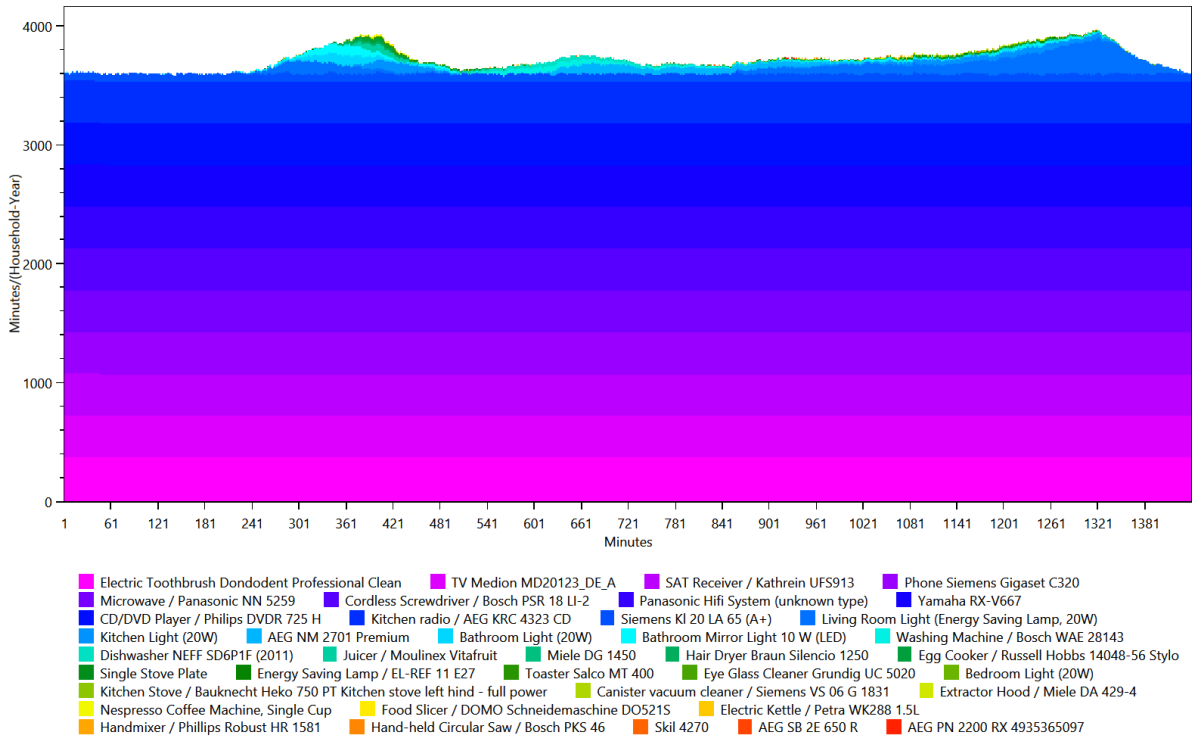
This is made from the files starting with: TimeOfUseEnergyProfiles

The time of use energy profiles shows when each device was used.

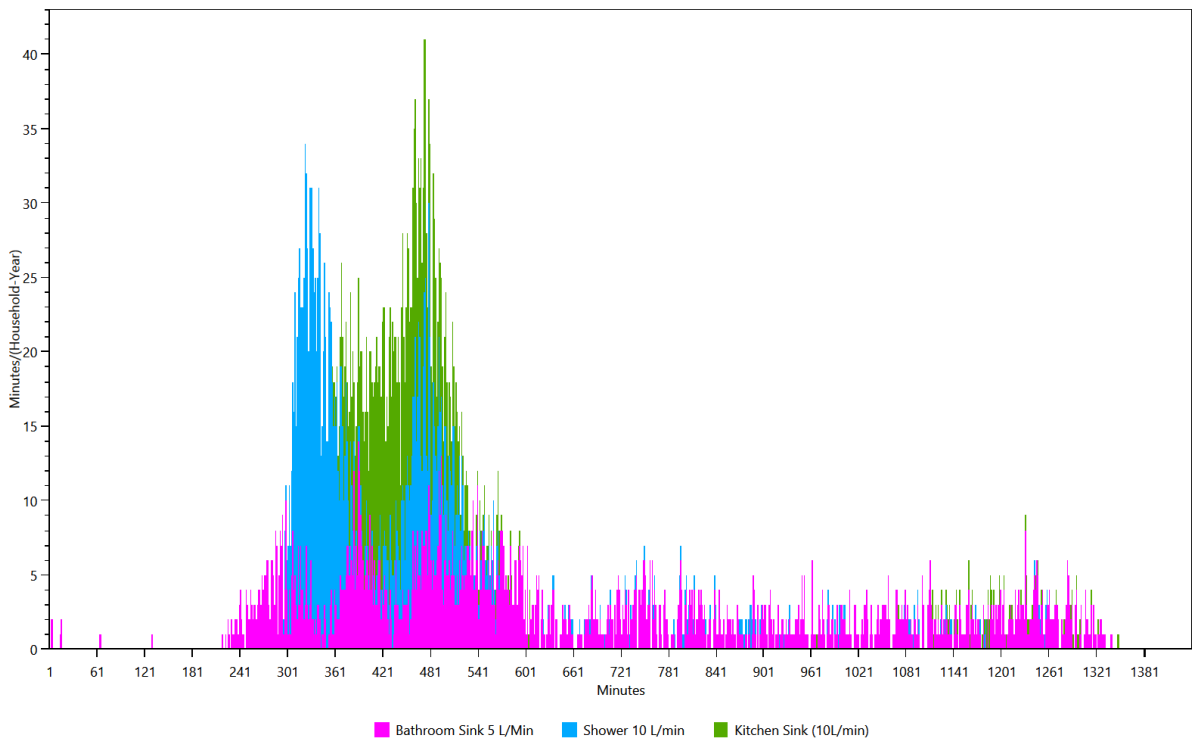
Cold Water



Electricity



Warm Water

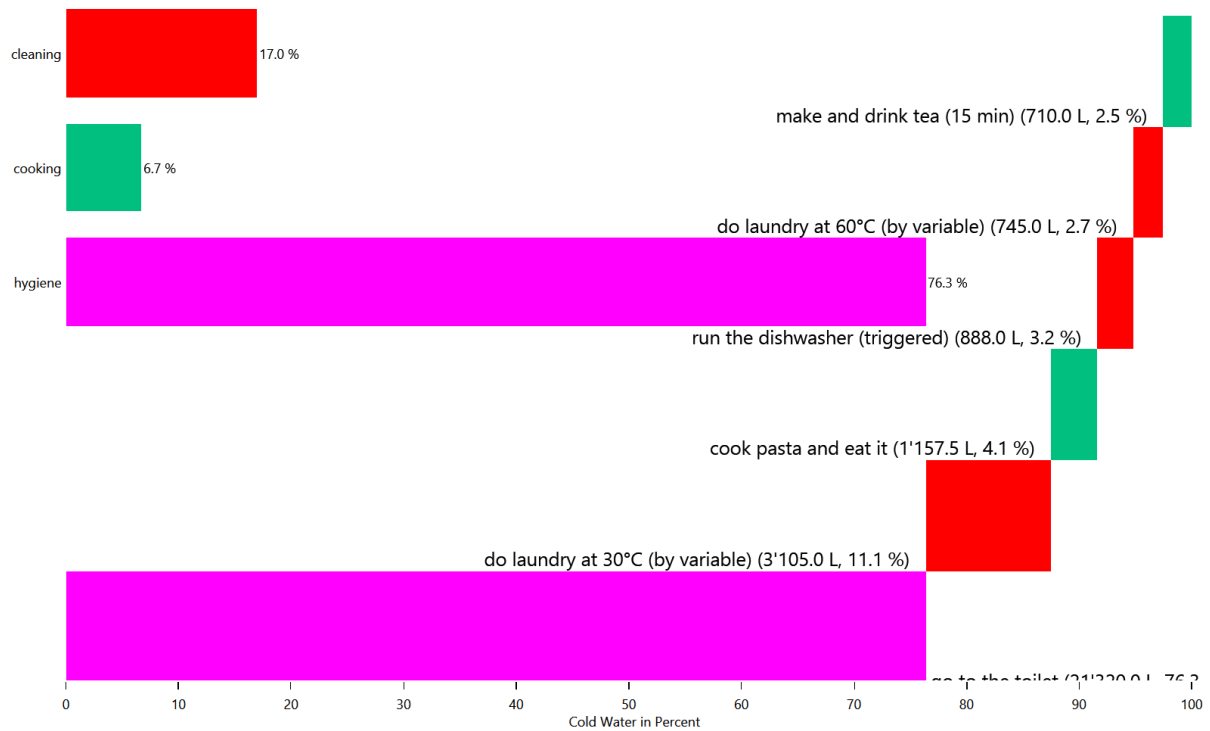


Energy/Resource use distribution per load type per affordance

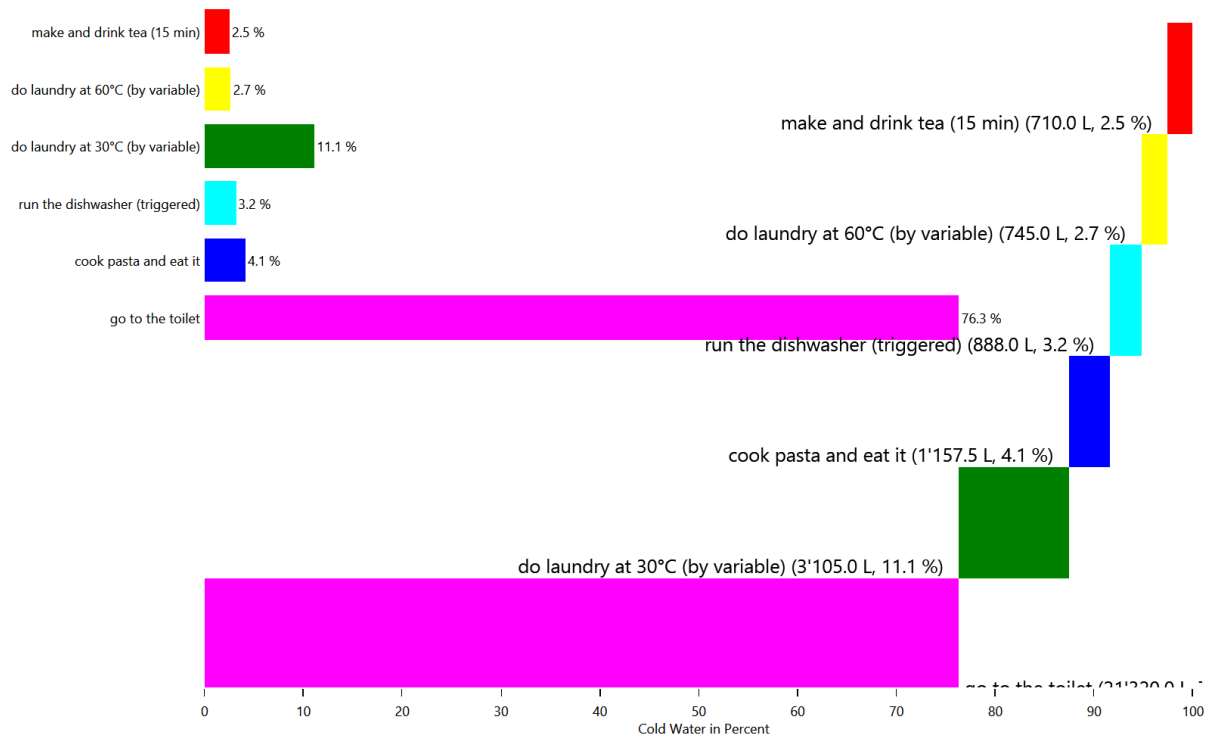
This is made from the files starting with: **AffordanceEnergyUse**

This shows the distribution of the energy/ressource use to each affordance by load type.

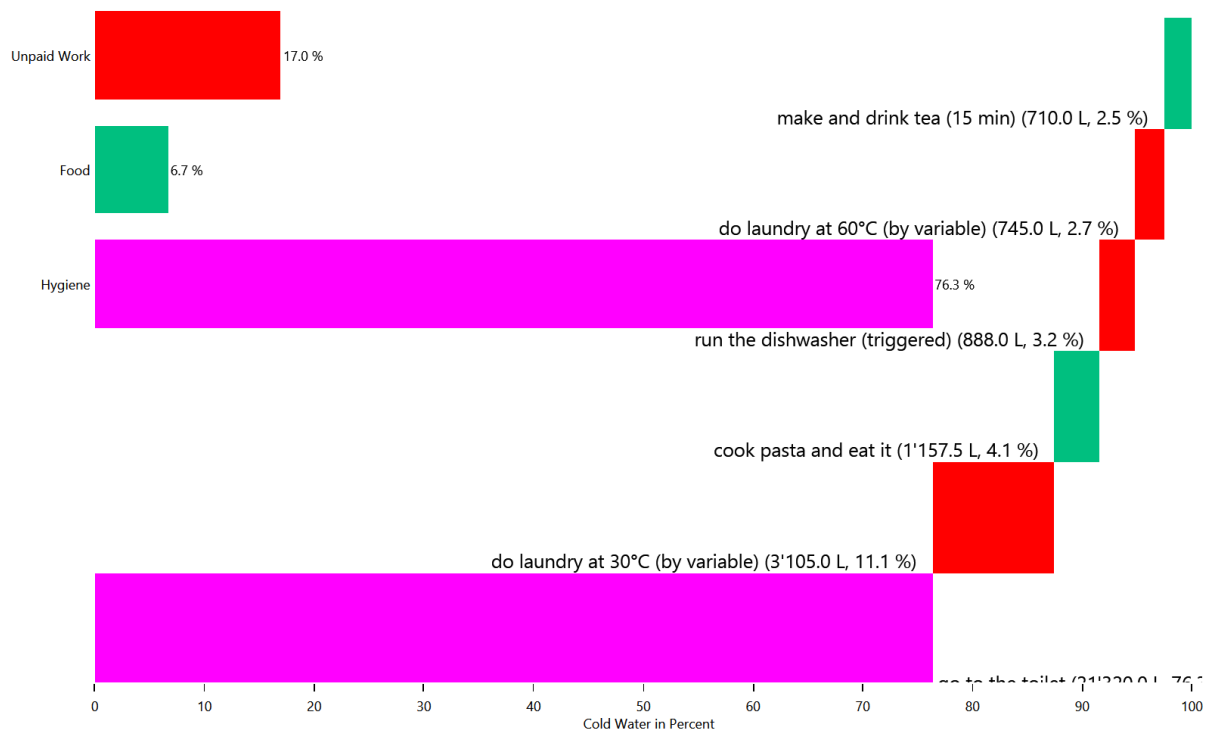
HH0 - Cold Water



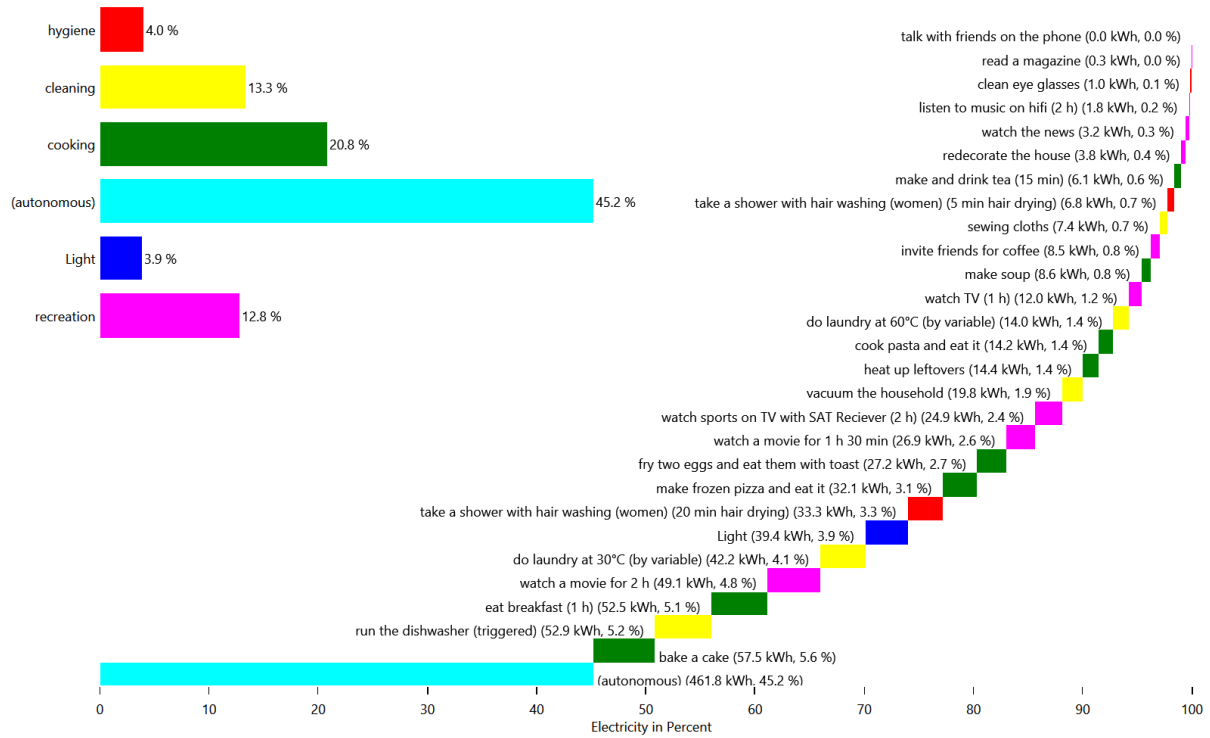
HH0 - Cold Water



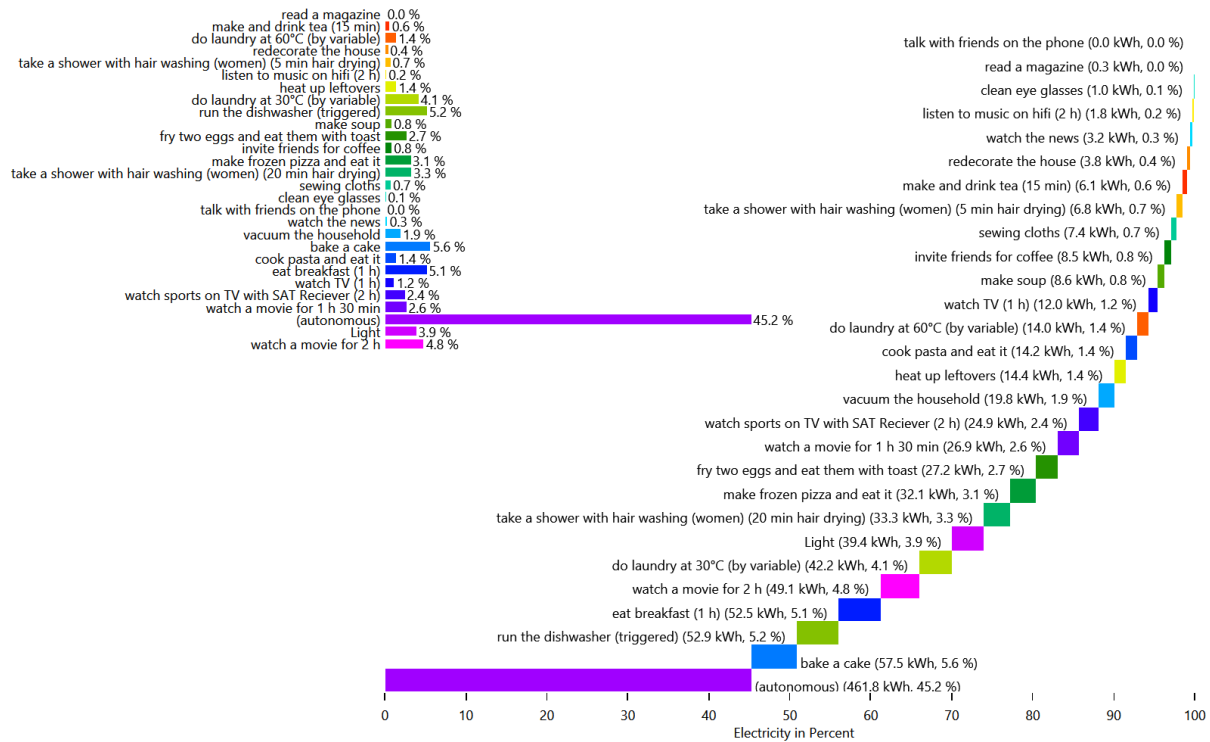
HH0 - Cold Water



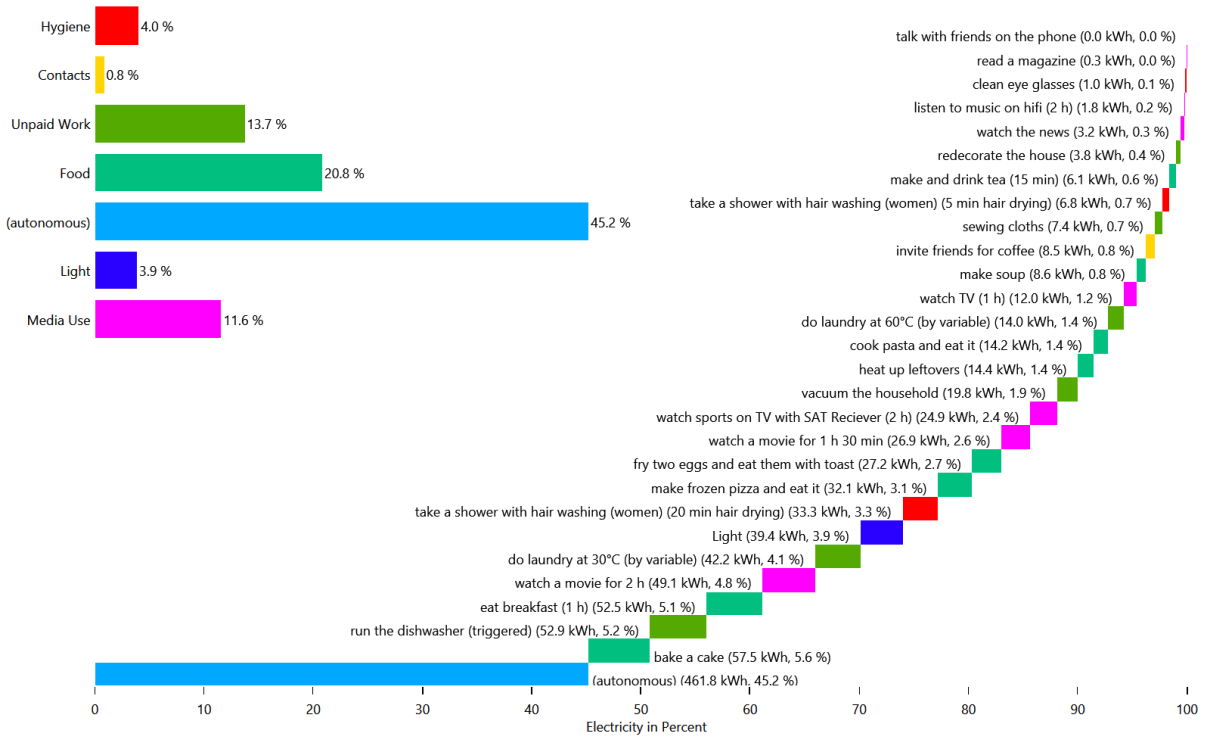
HH0 - Electricity



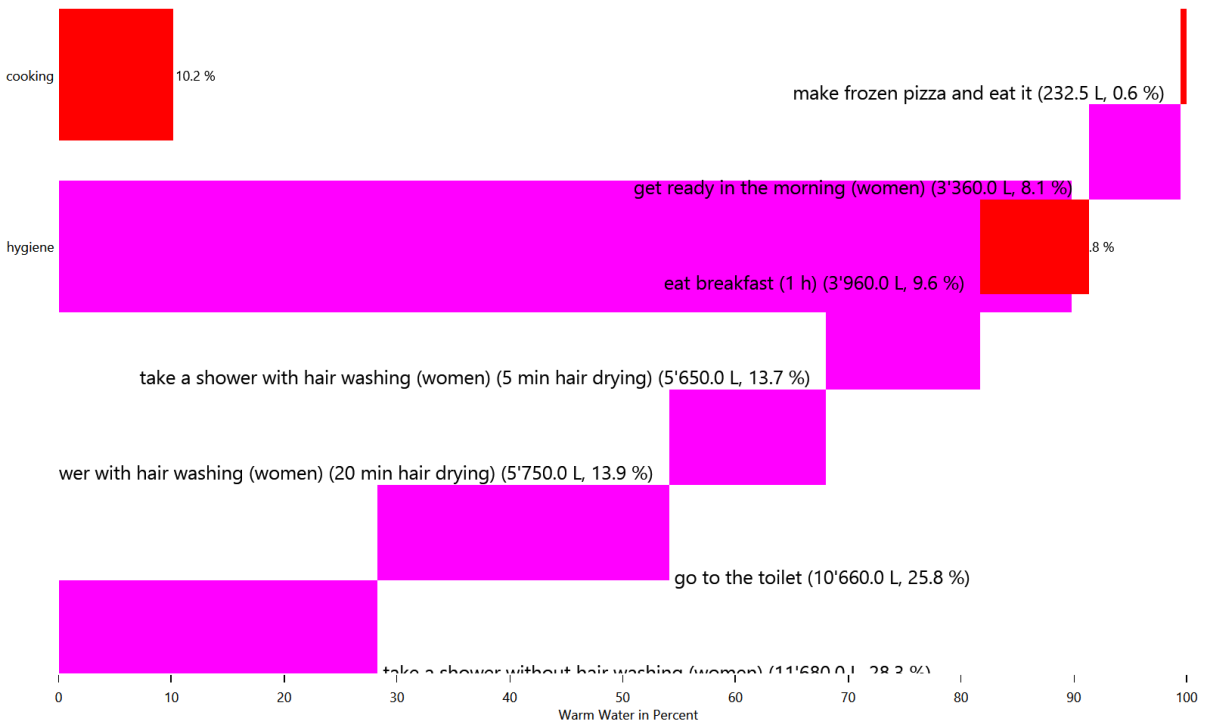
HH0 - Electricity



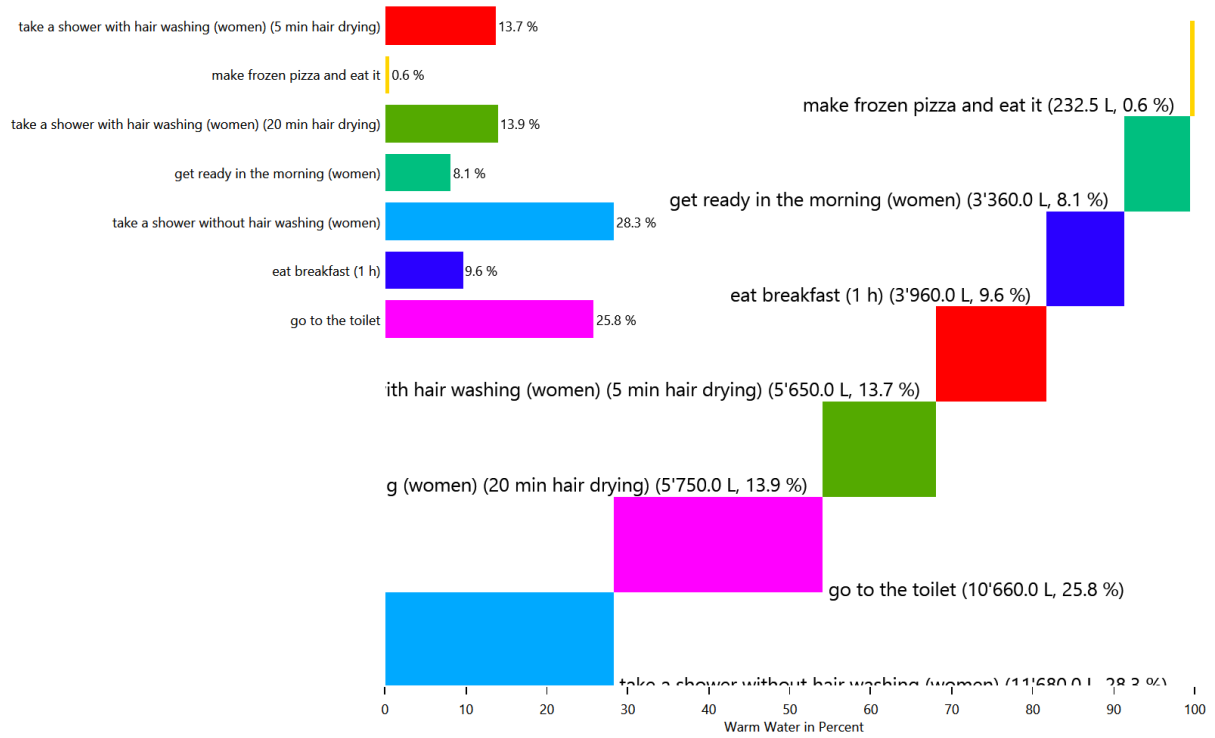
HH0 - Electricity



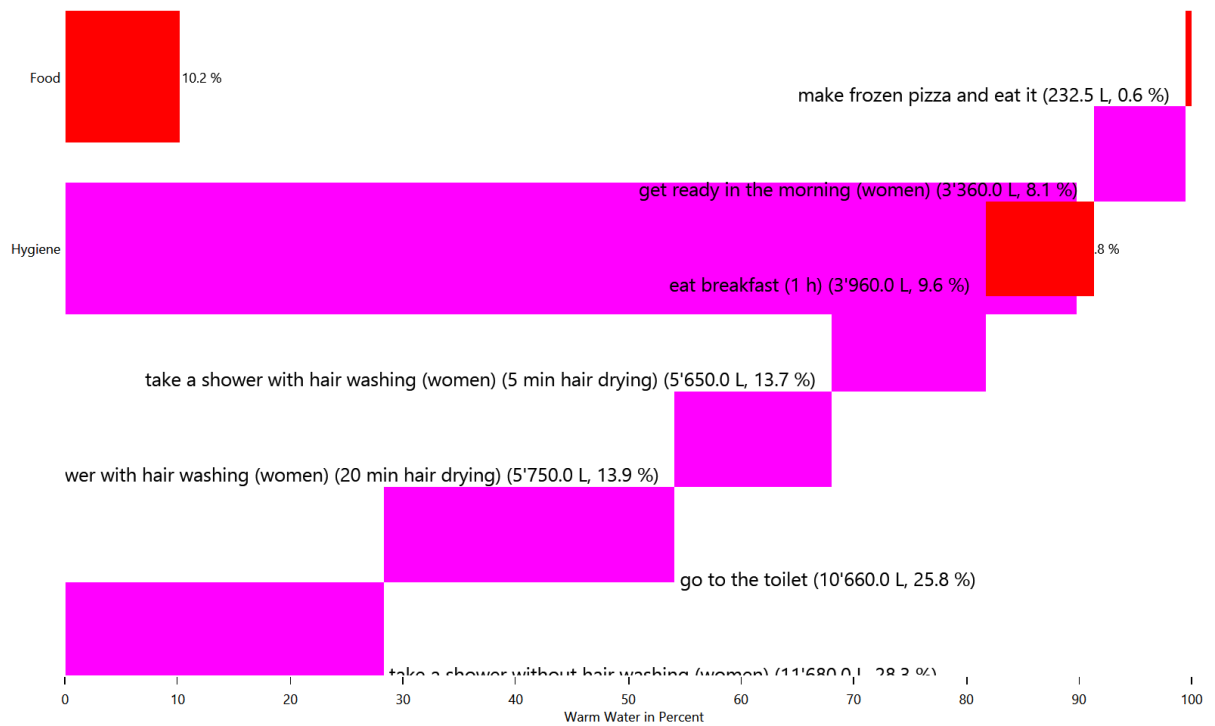
HH0 - Warm Water



HH0 - Warm Water



HH0 - Warm Water

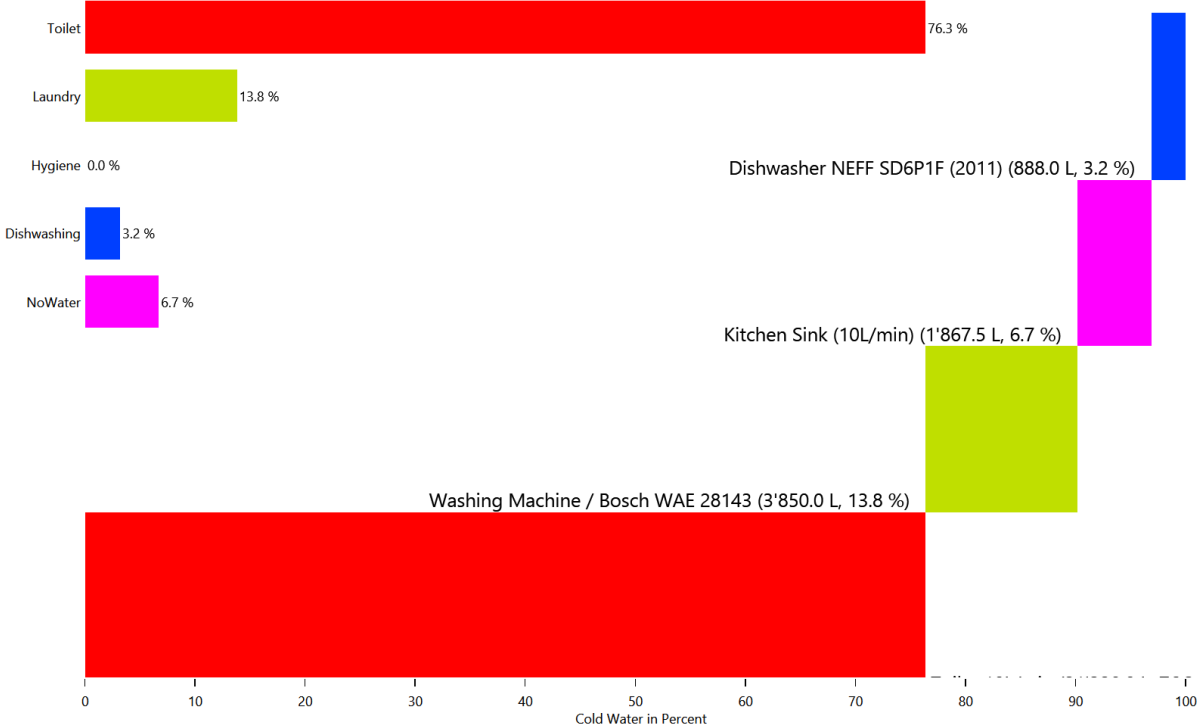


Energy use for each load type for each device

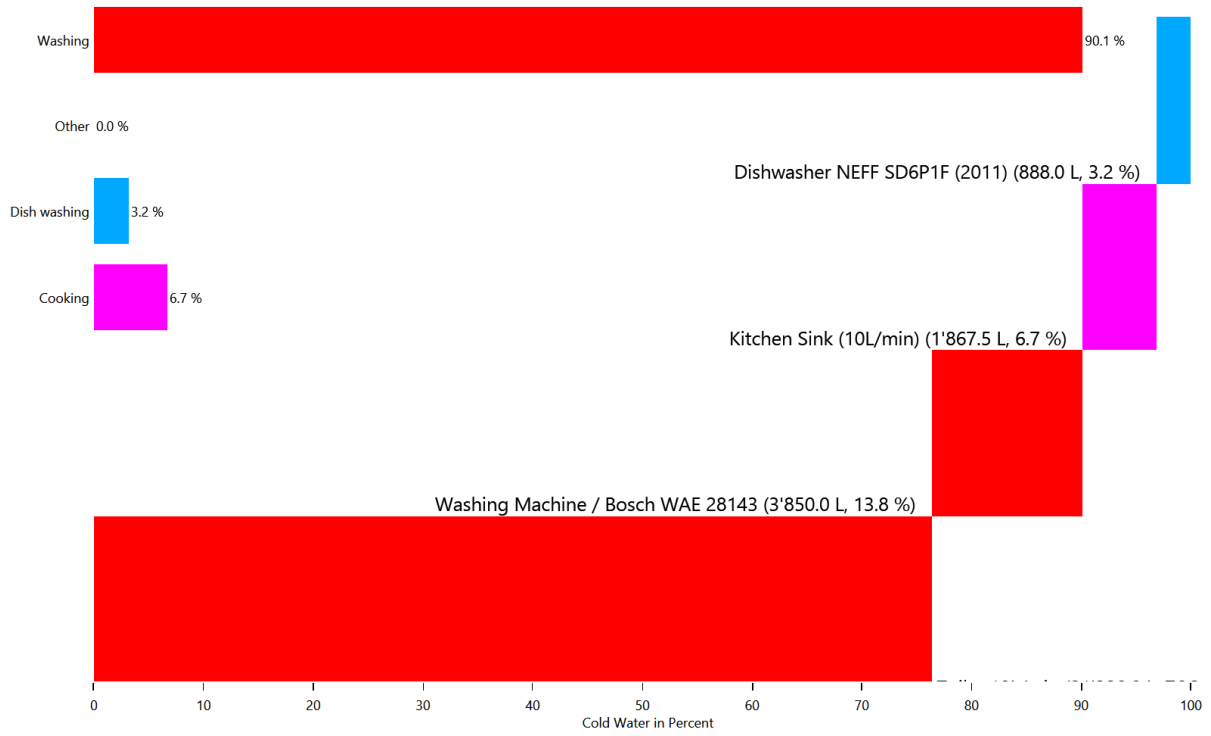
This is made from the files starting with: DeviceSums

These pie charts show the energy use for each individual device in each load type.

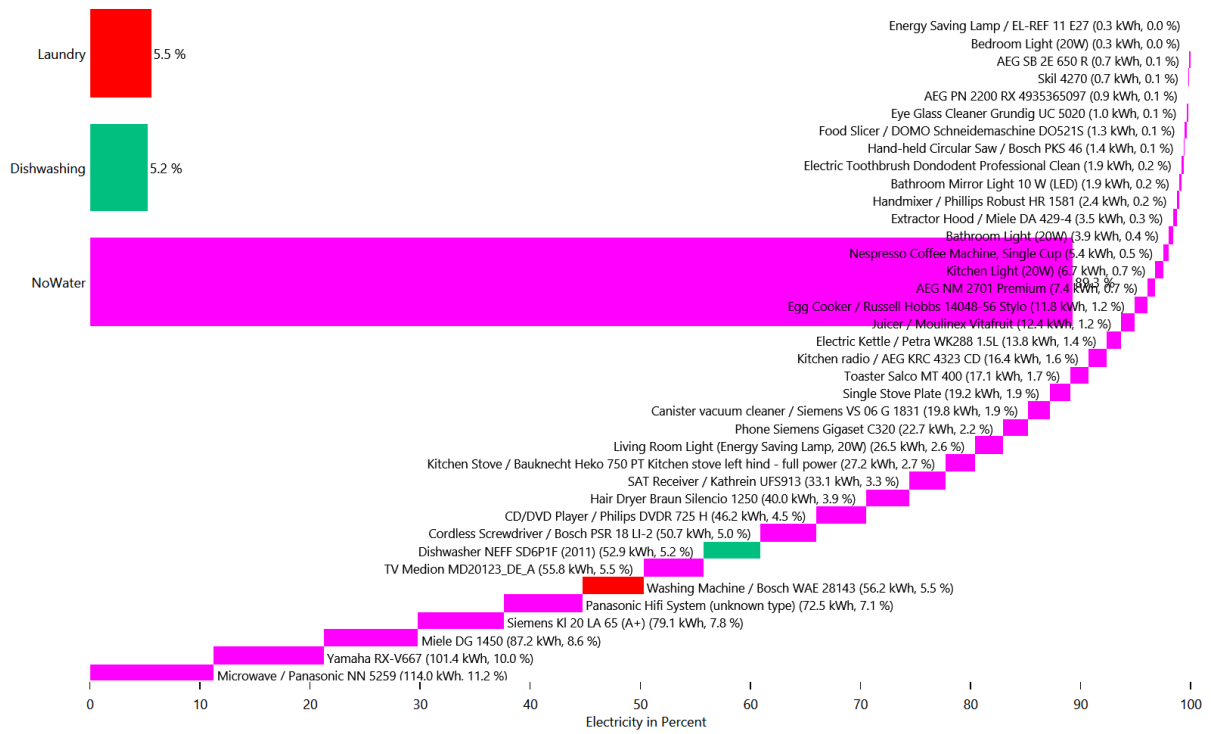
Cold Water



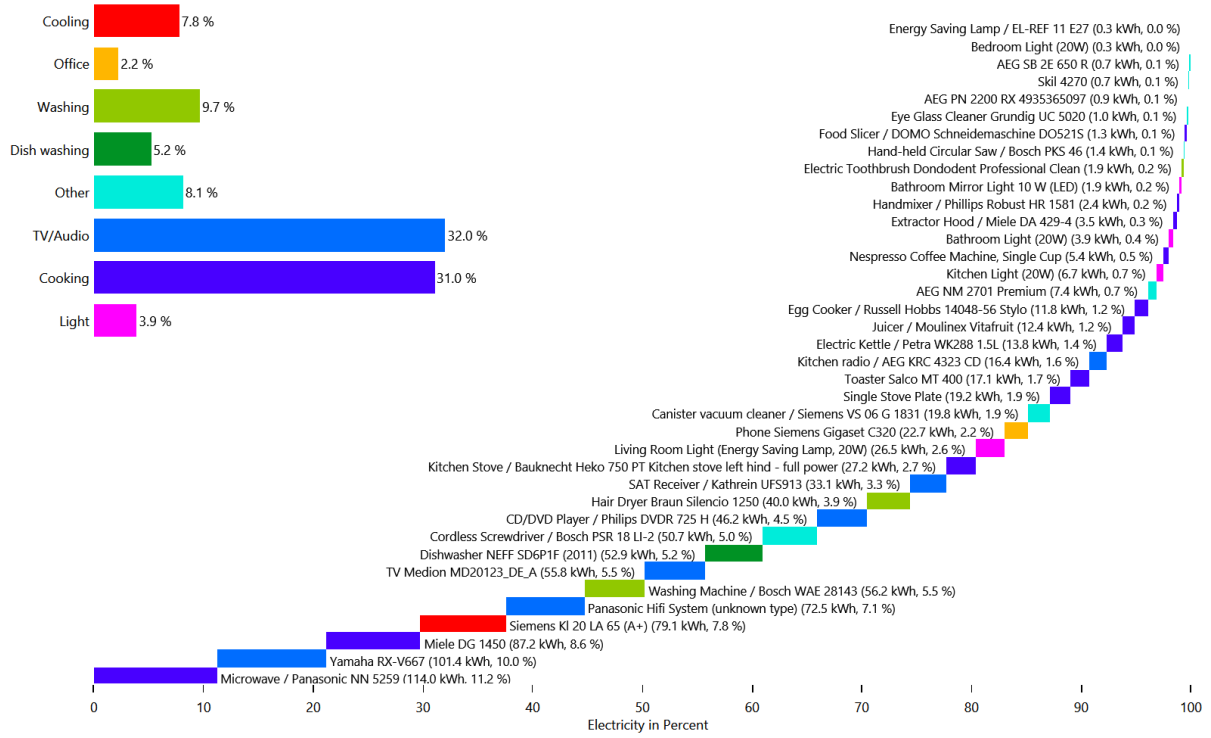
Cold Water



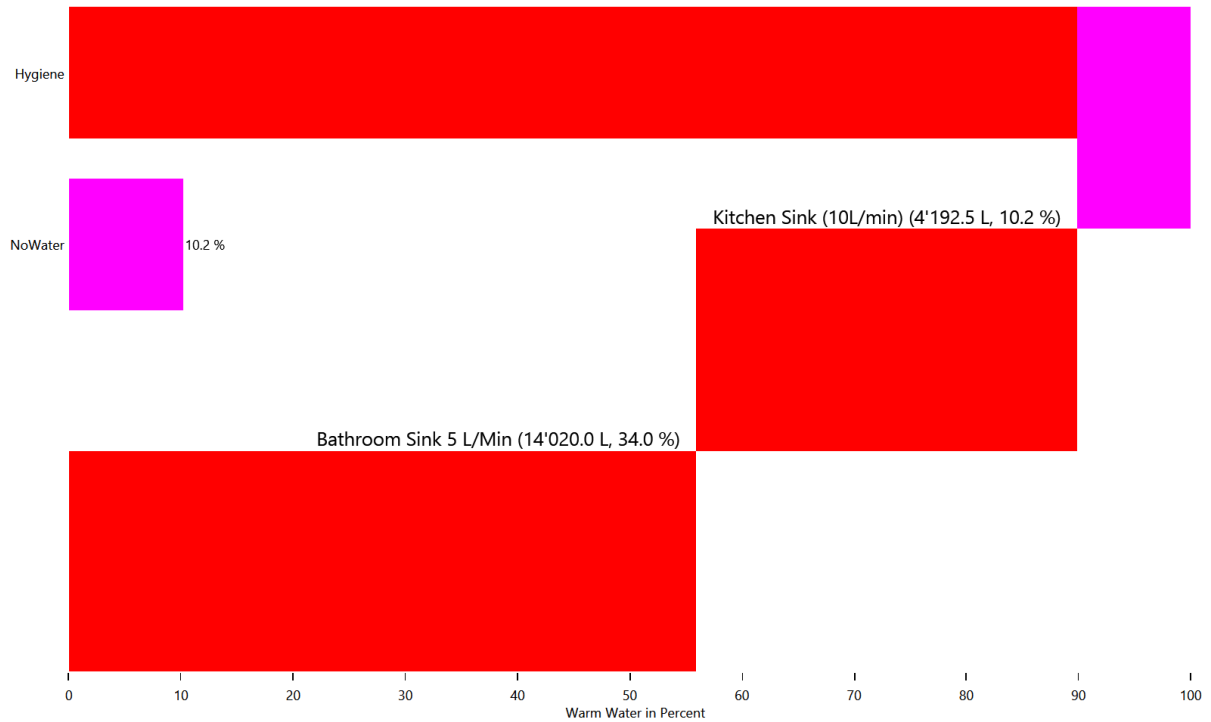
Electricity



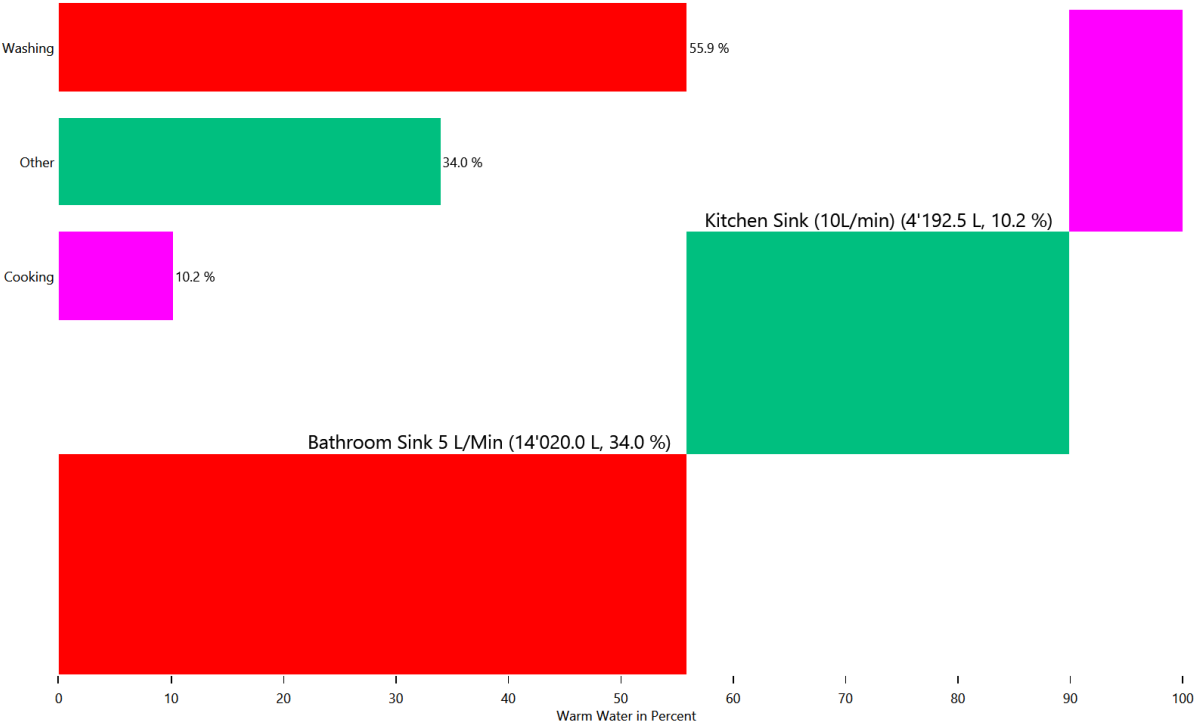
Electricity



Warm Water



Warm Water

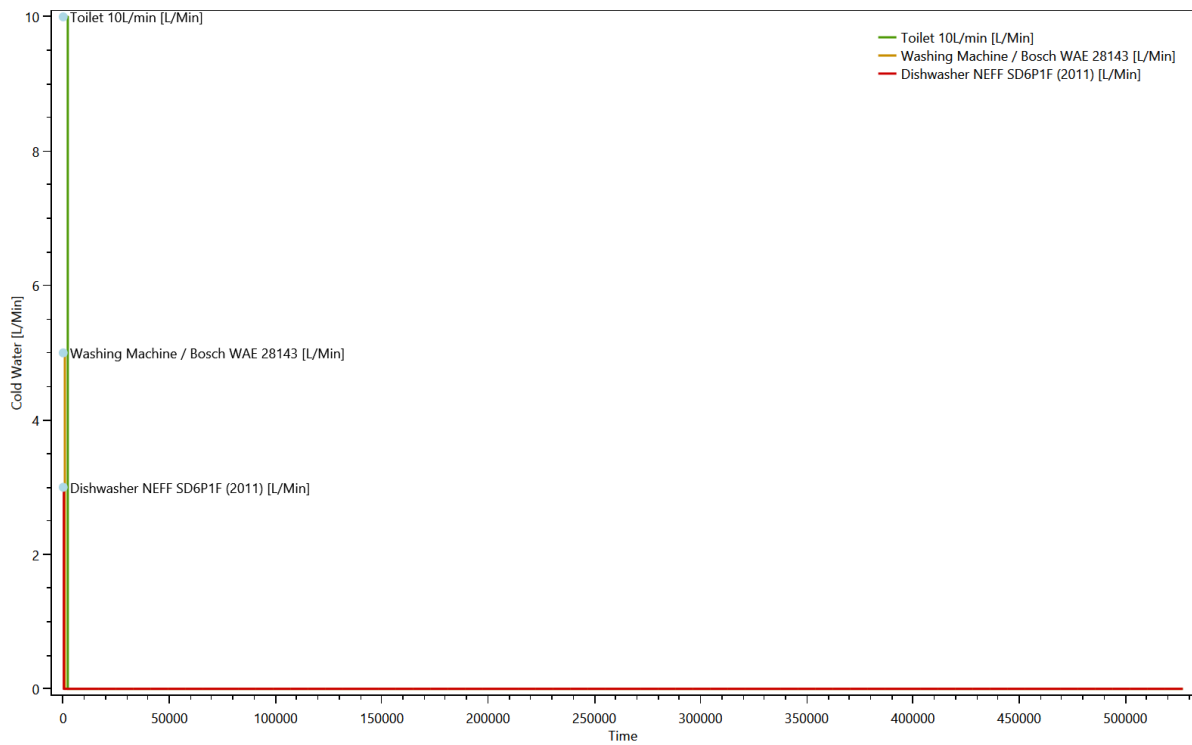


Duration curve for each device for each load type

This is made from the files starting with: DeviceDurationCurves

The device duration curve show the duration curve of each device to give an overview of the power consumption.

Cold Water

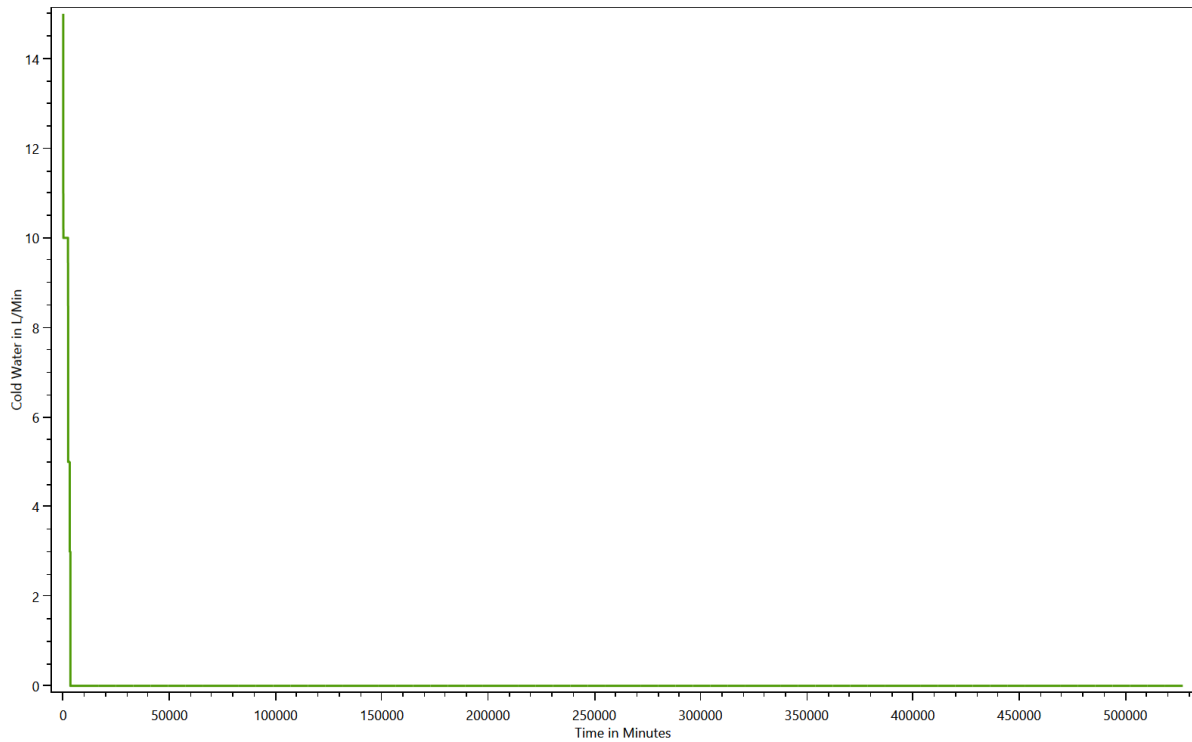


Duration curve for each load type

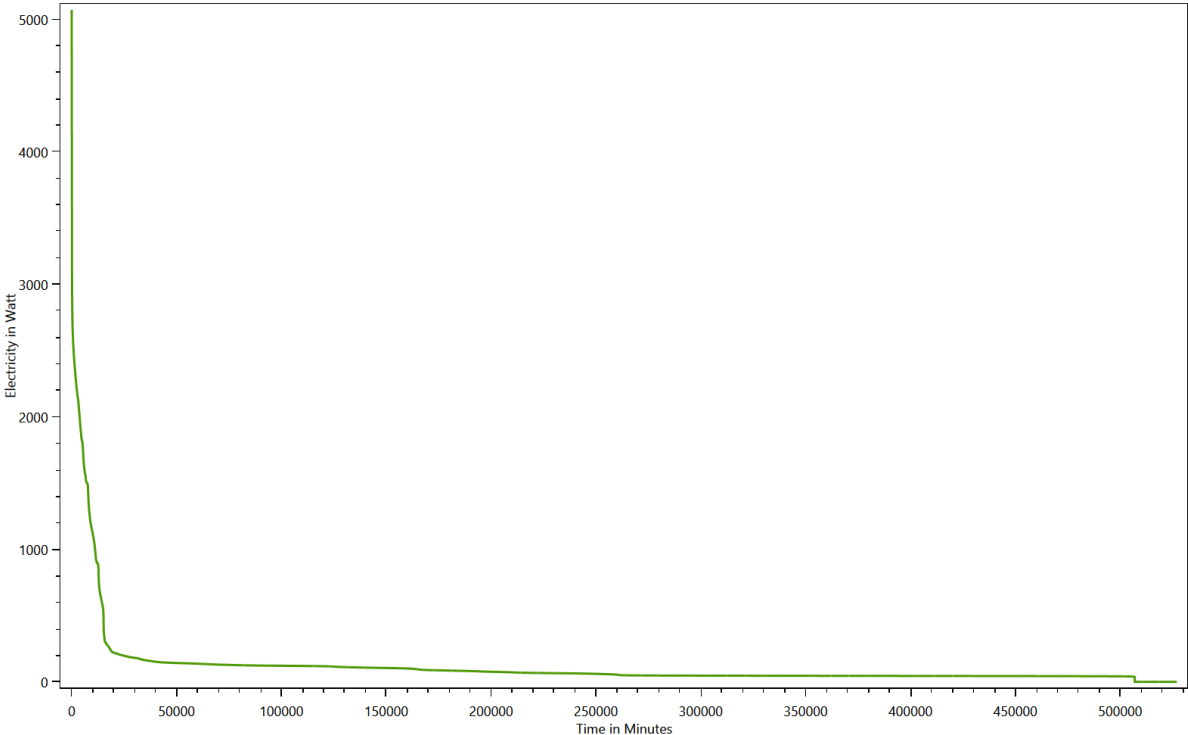
This is made from the files starting with: **DurationCurve**

The duration curve show the duration curve for the entire household to give an overview of the power consumption.

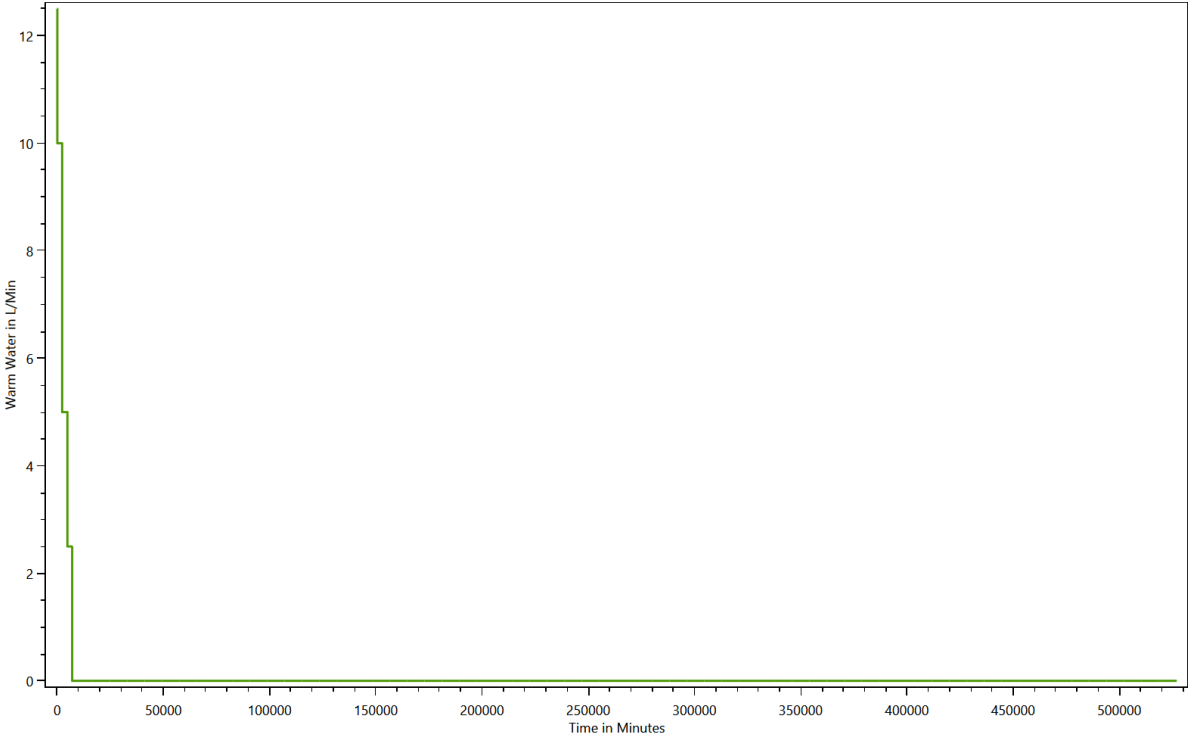
Cold Water



Electricity



Warm Water

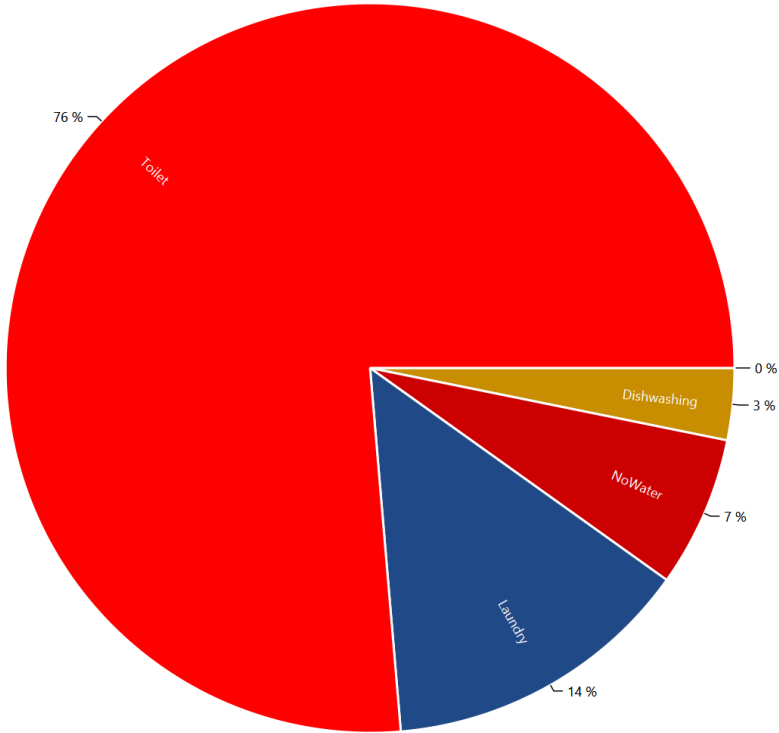


Grouped energy use for each load type for each device

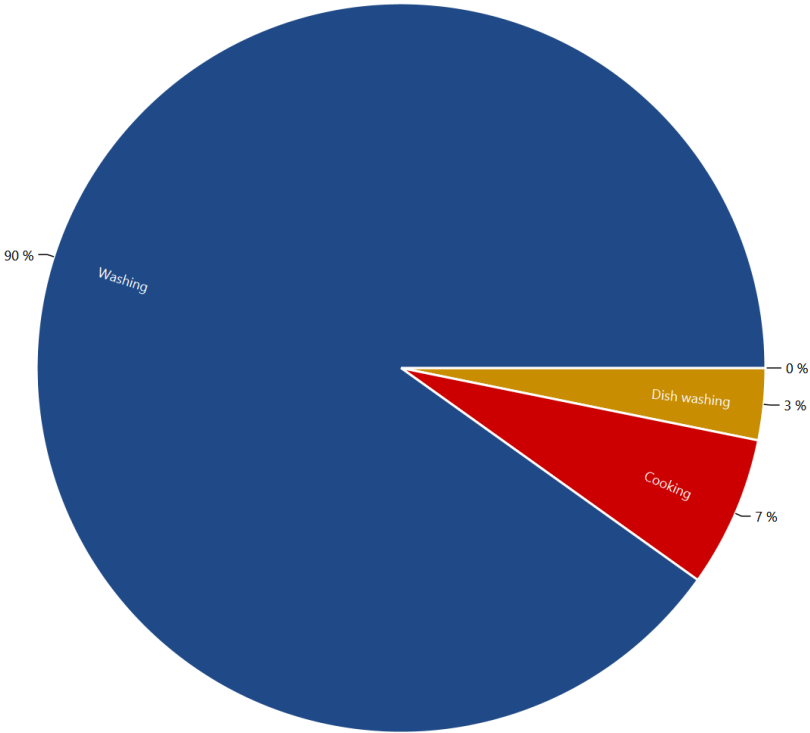
This is made from the files starting with: DeviceTaggingSet

The devices in the LPG can be grouped with various criteria by the device tagging sets. These charts show the results.

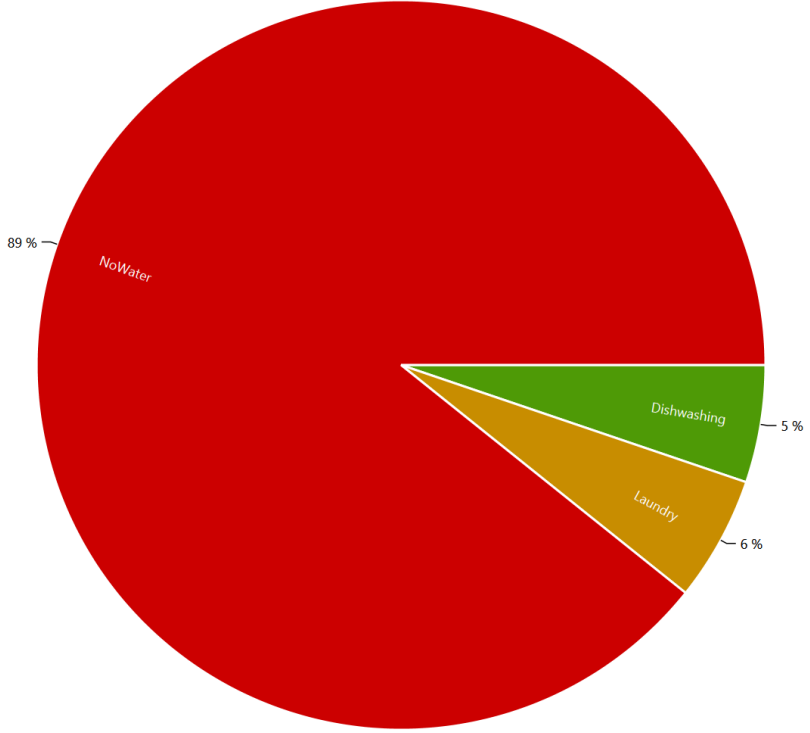
HH0 - Destatis Water Usage Statistics - Cold Water



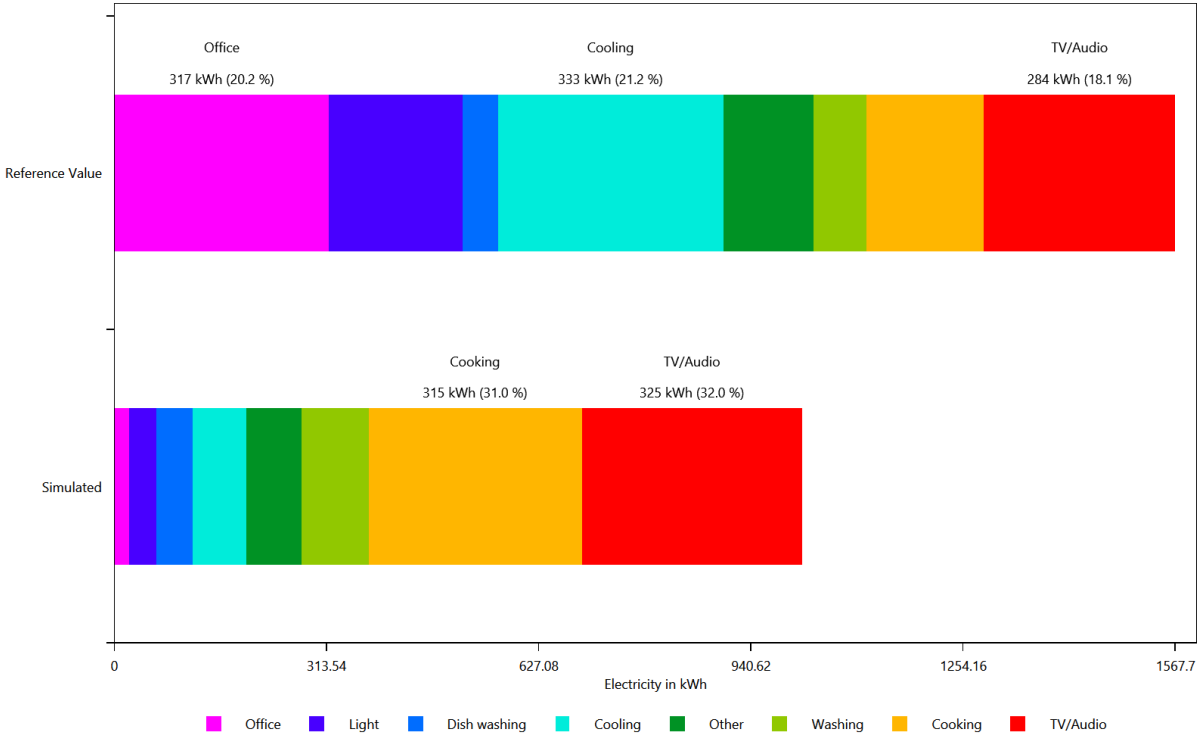
HH0 - Energieagentur - Cold Water



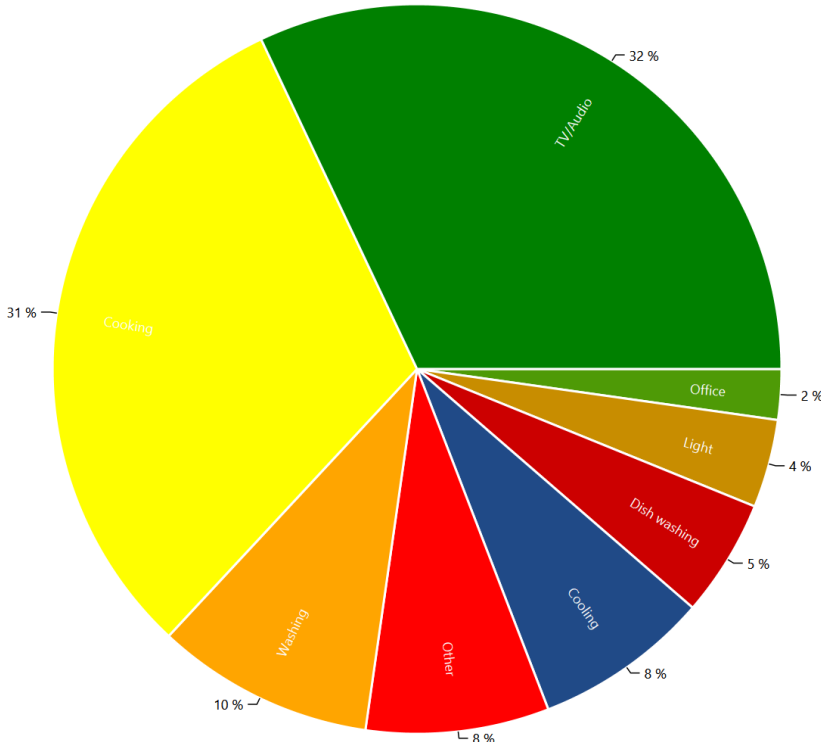
HH0 - Destatis Water Usage Statistics - Electricity



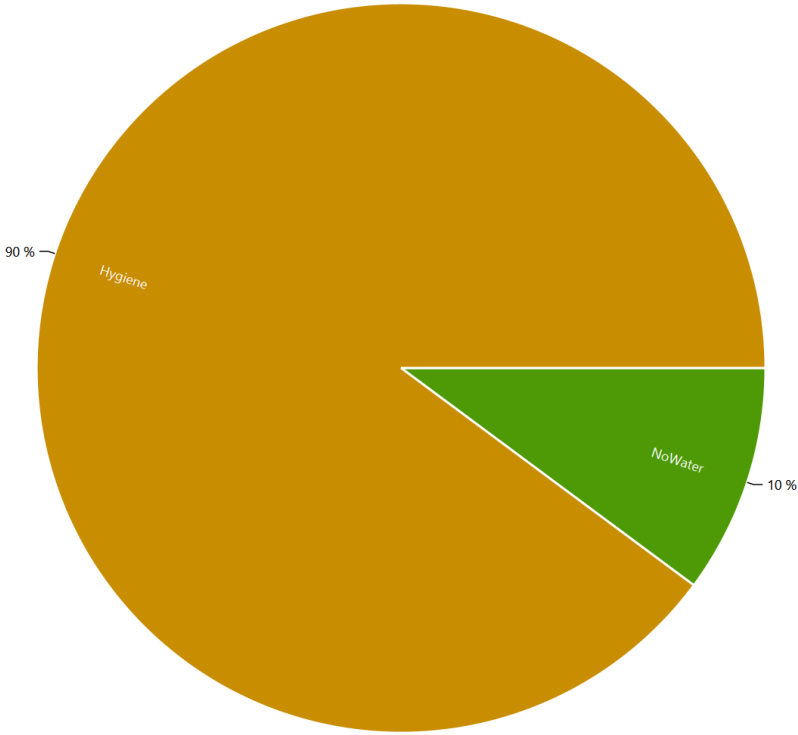
HH0 - Energieagentur - Electricity



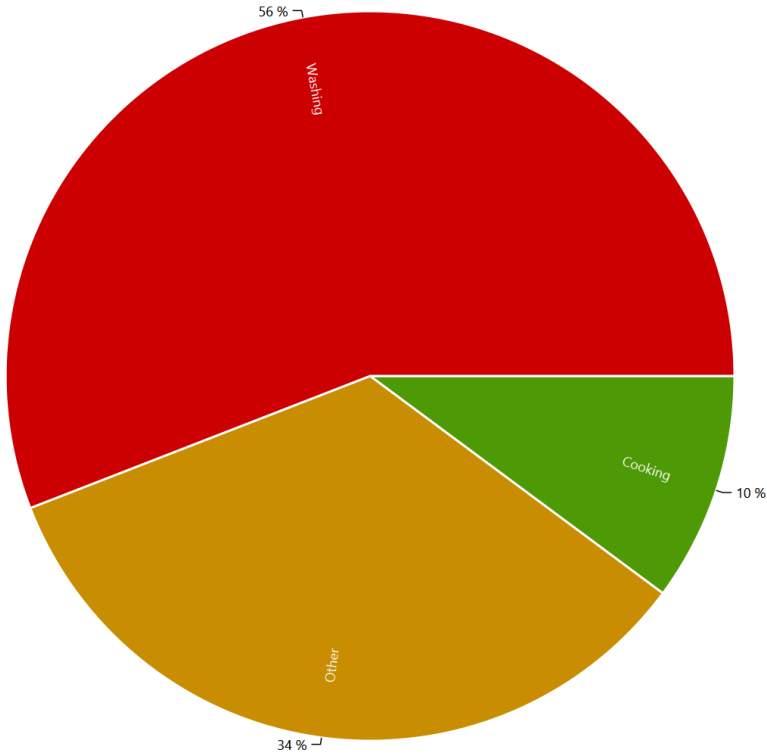
HH0 - Energieagentur - Electricity



HH0 - Destatis Water Usage Statistics - Warm Water



HH0 - Energieagentur - Warm Water

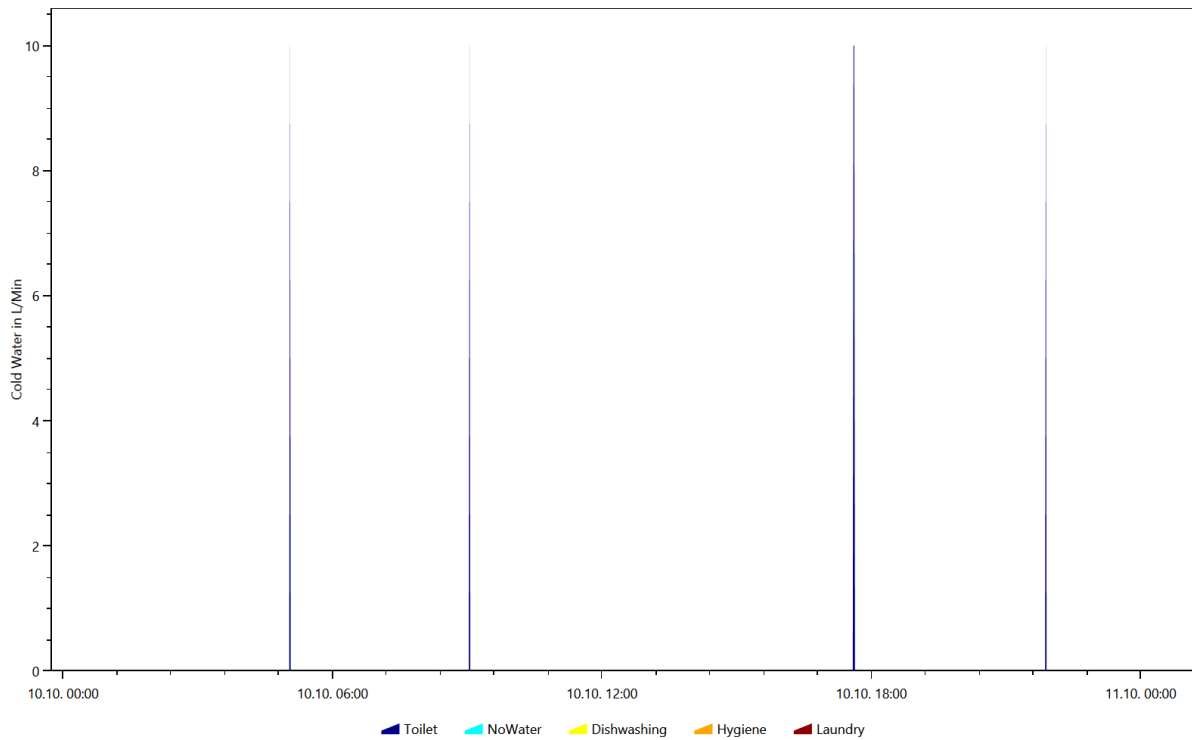


Example of the device profiles for each load type

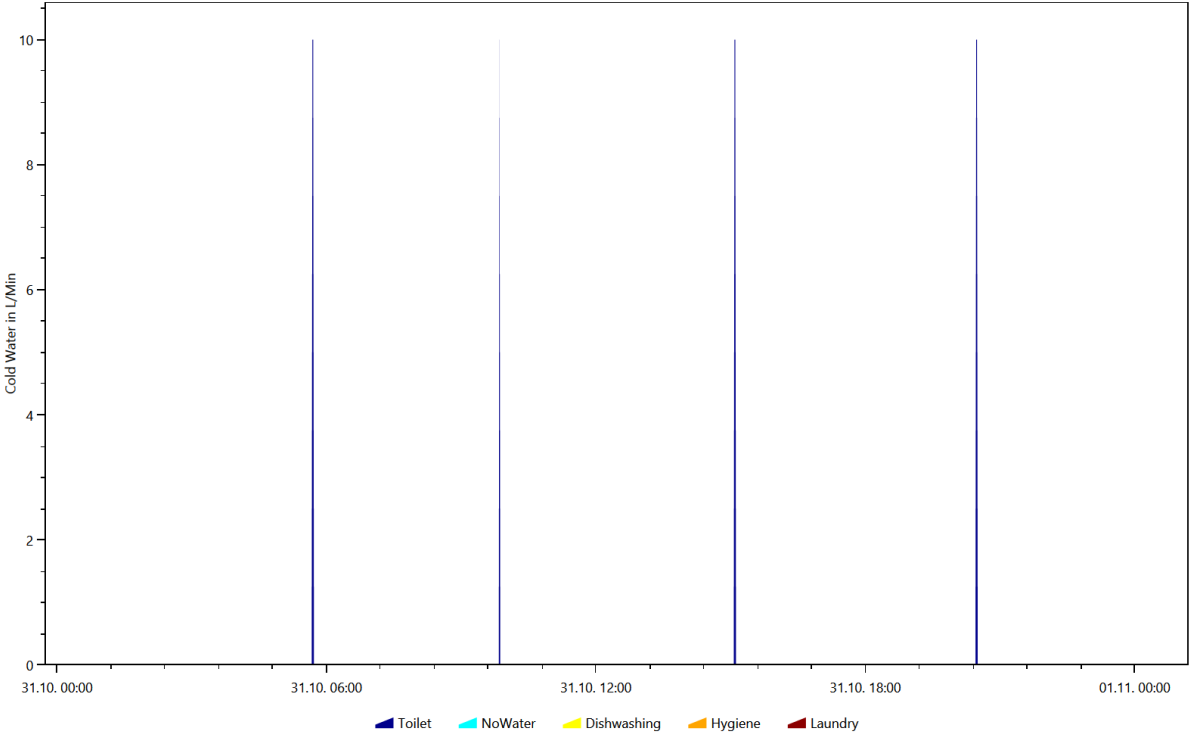
This is made from the files starting with: DeviceProfiles

The device profile files are the reason for the LPG. They show the power consumption of each device.

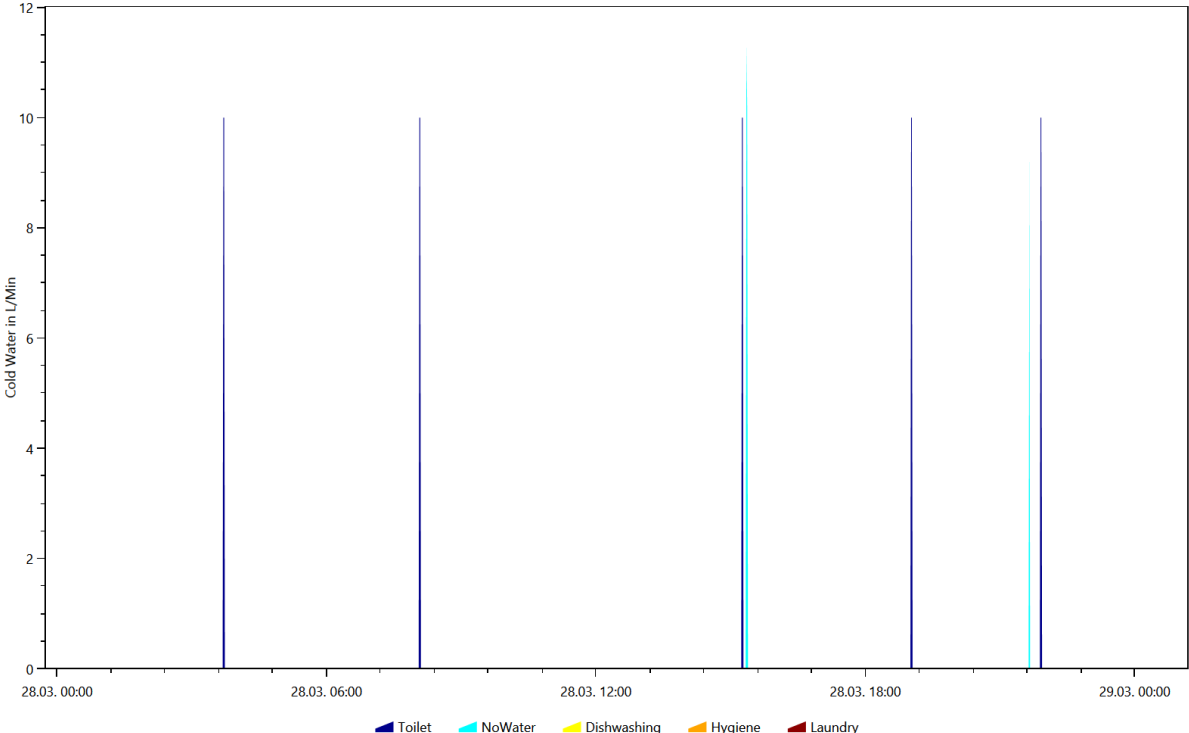
Cold Water, Coloring Scheme: Destatis Water Usage Statistics, Date 2016.10.10



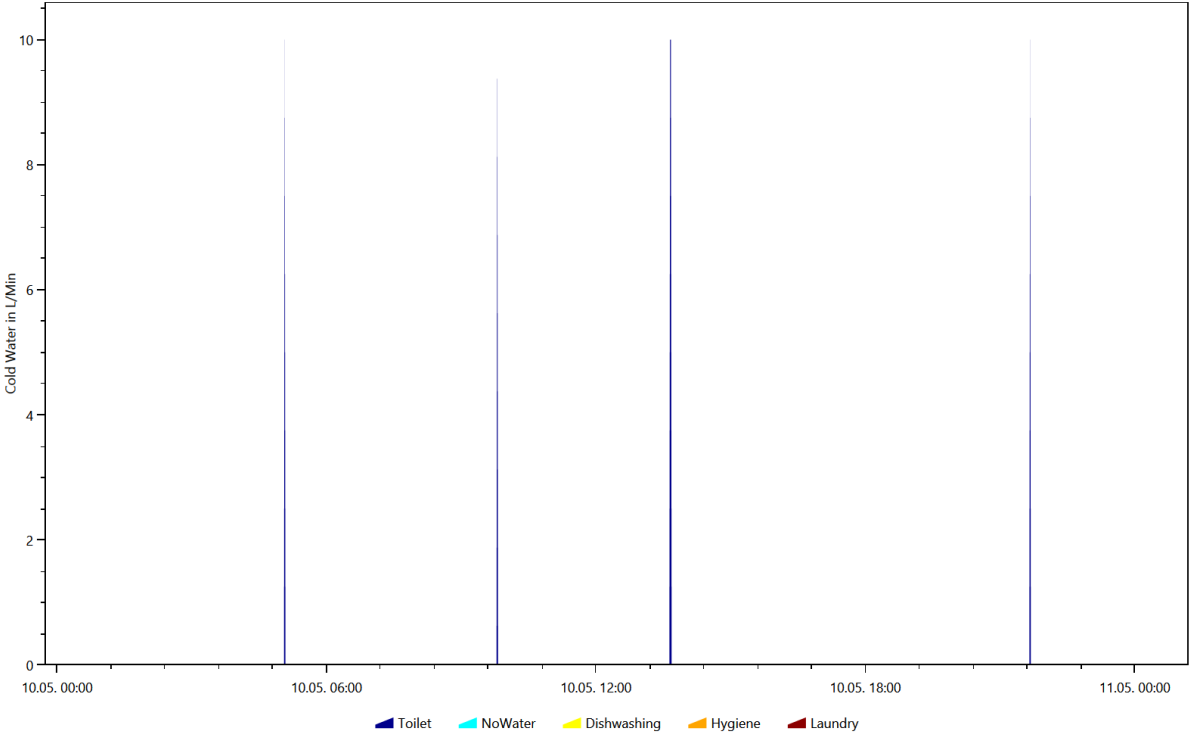
Cold Water, Coloring Scheme: Destatis Water Usage Statistics, Date 2016.10.31



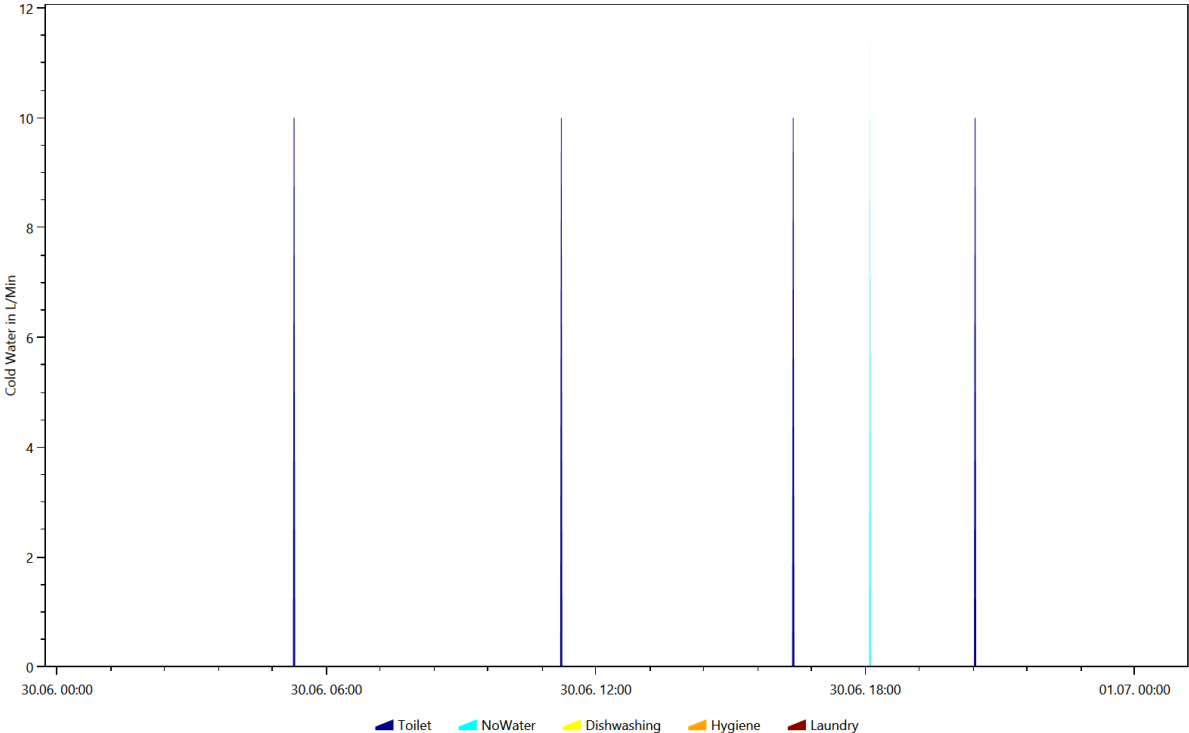
Cold Water, Coloring Scheme: Destatis Water Usage Statistics, Date 2016.3.28



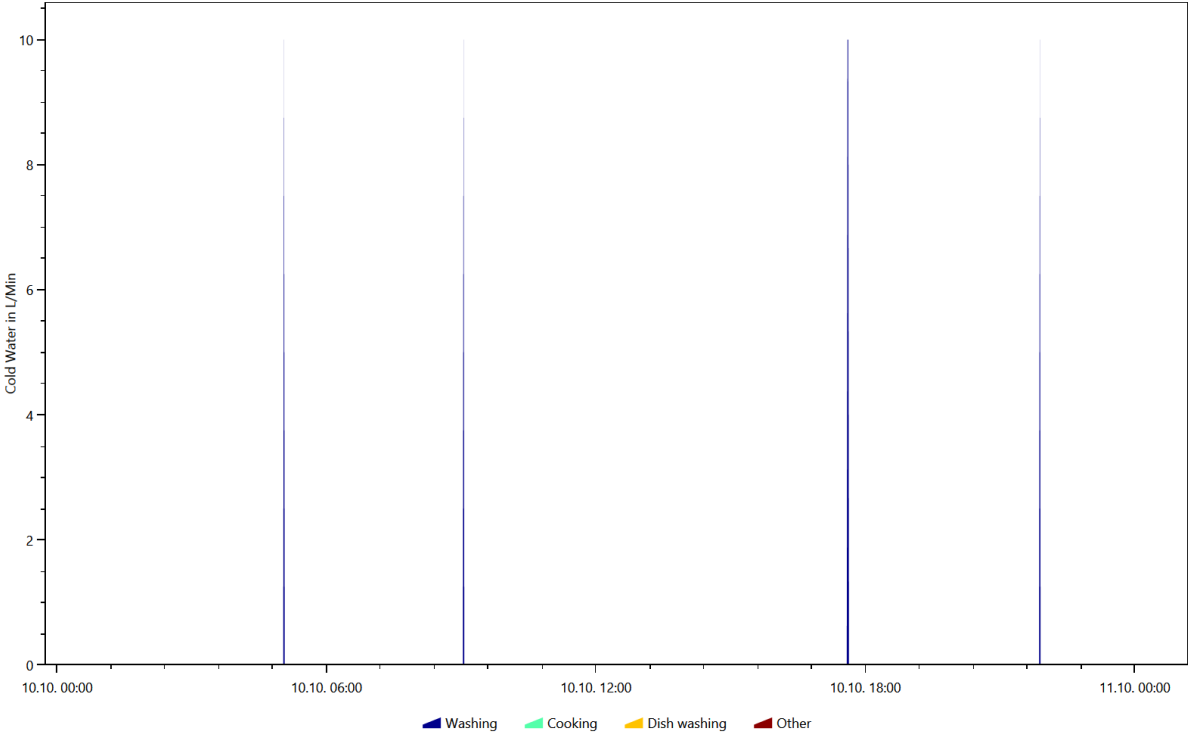
Cold Water, Coloring Scheme: Destatis Water Usage Statistics, Date 2016.5.10



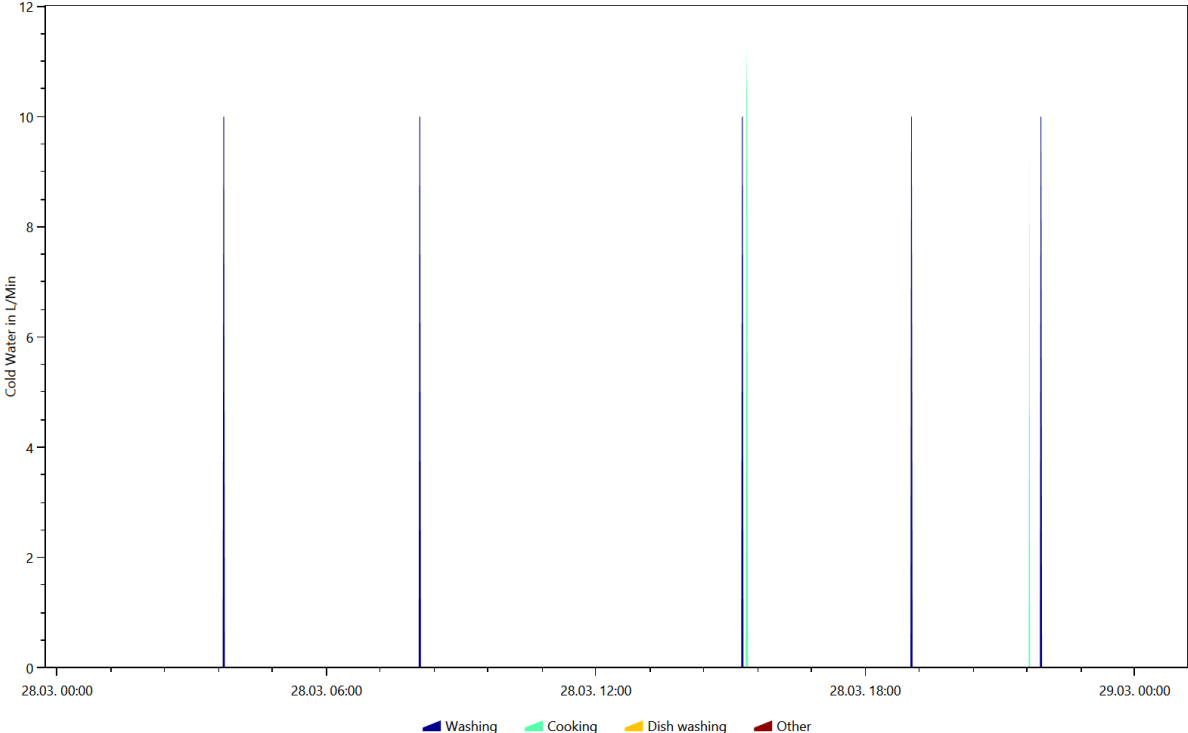
Cold Water, Coloring Scheme: Destatis Water Usage Statistics, Date 2016.6.30



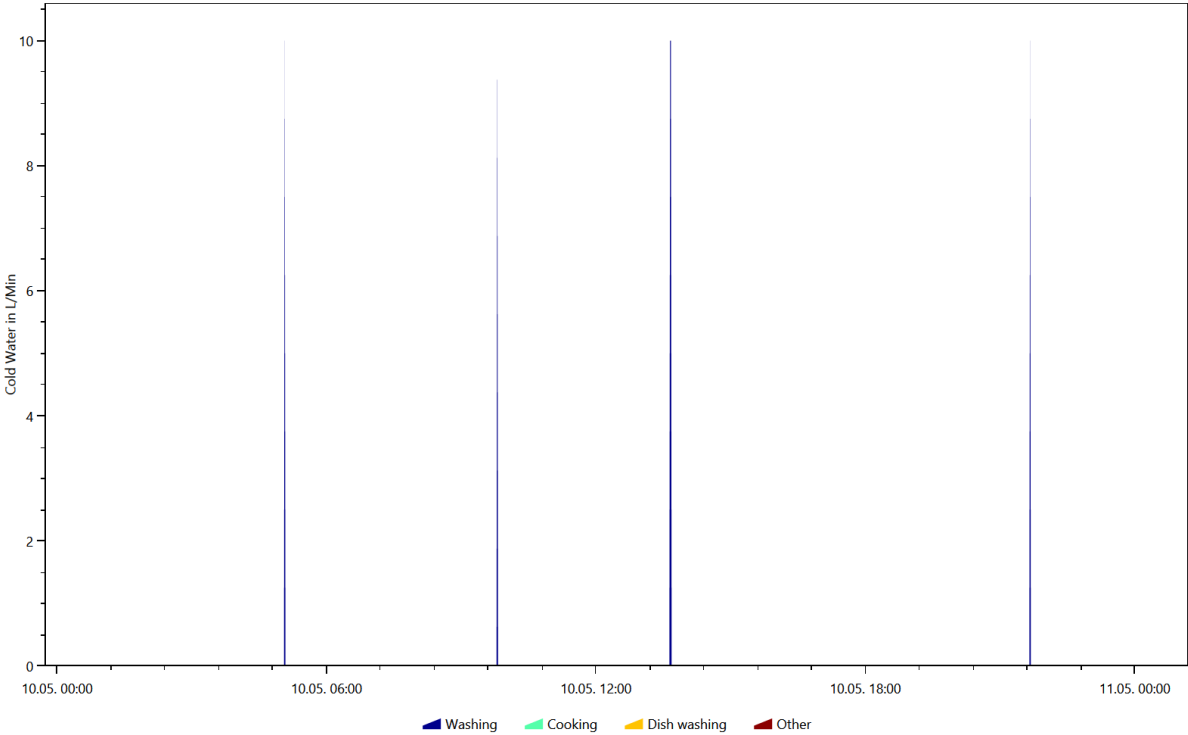
Cold Water, Coloring Scheme: Energieagentur.NRW Tags, Date 2016.10.10



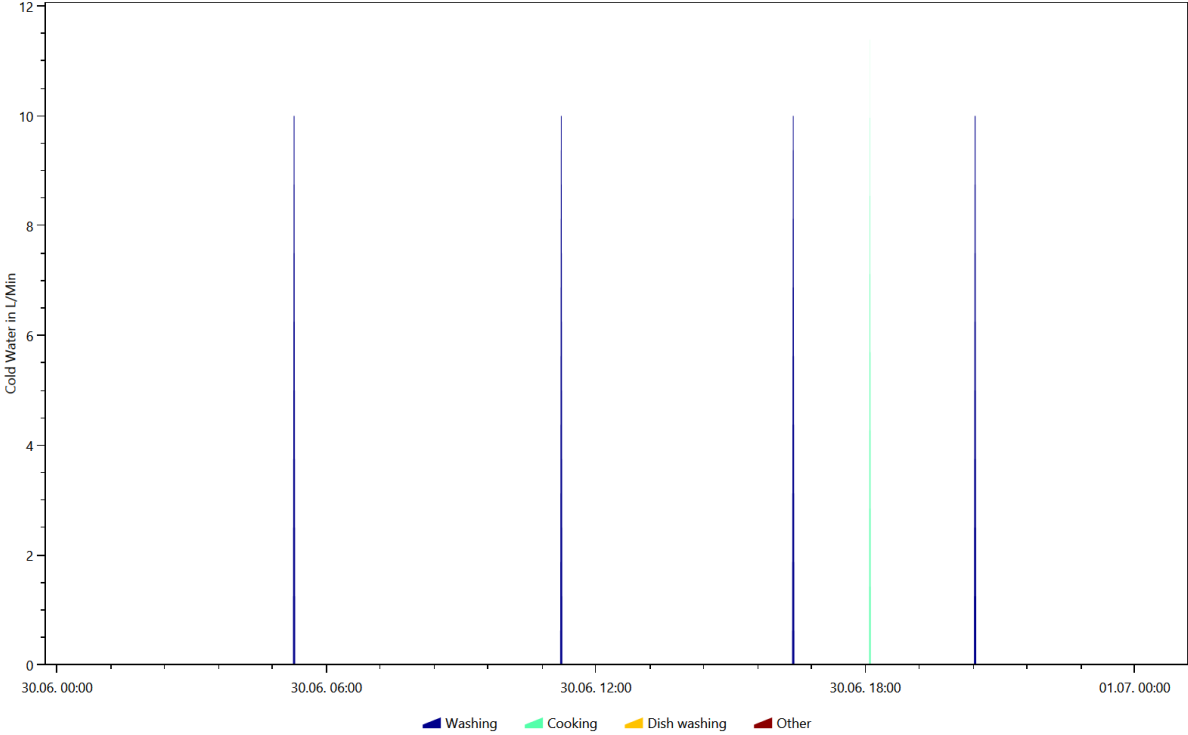
Cold Water, Coloring Scheme: Energieagentur.NRW Tags, Date 2016.3.28



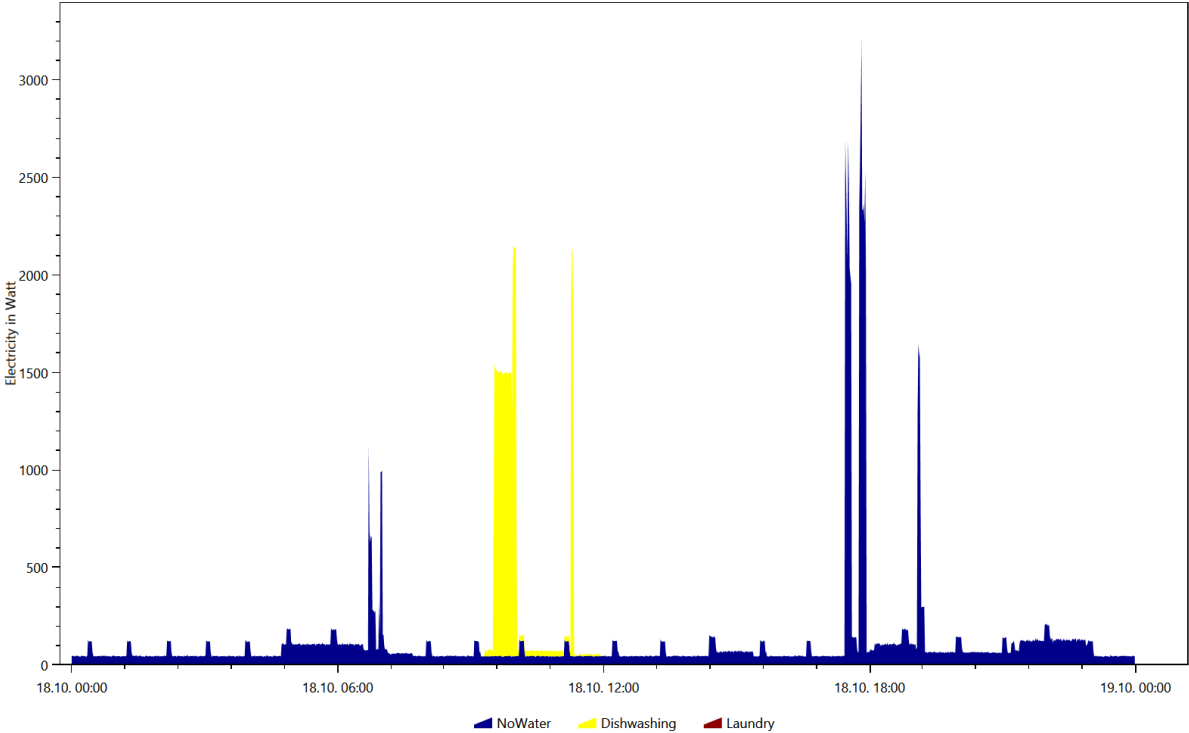
Cold Water, Coloring Scheme: Energieagentur.NRW Tags, Date 2016.5.10



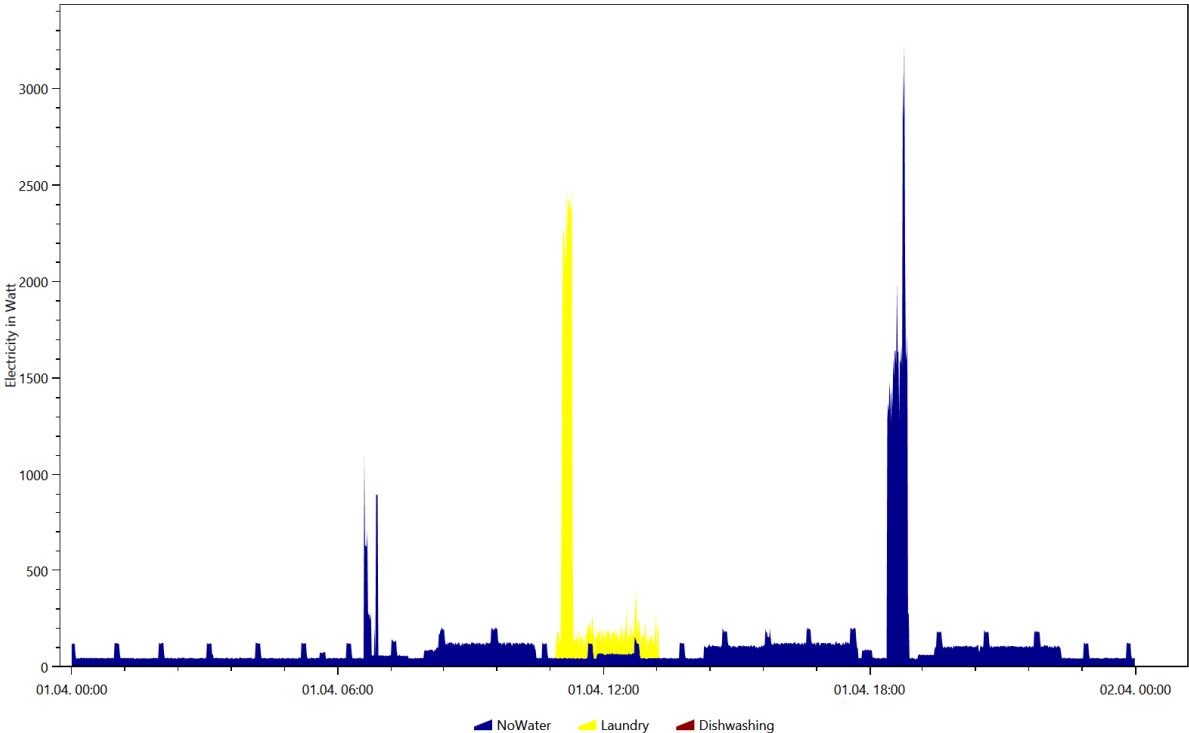
Cold Water, Coloring Scheme: Energieagentur.NRW Tags, Date 2016.6.30



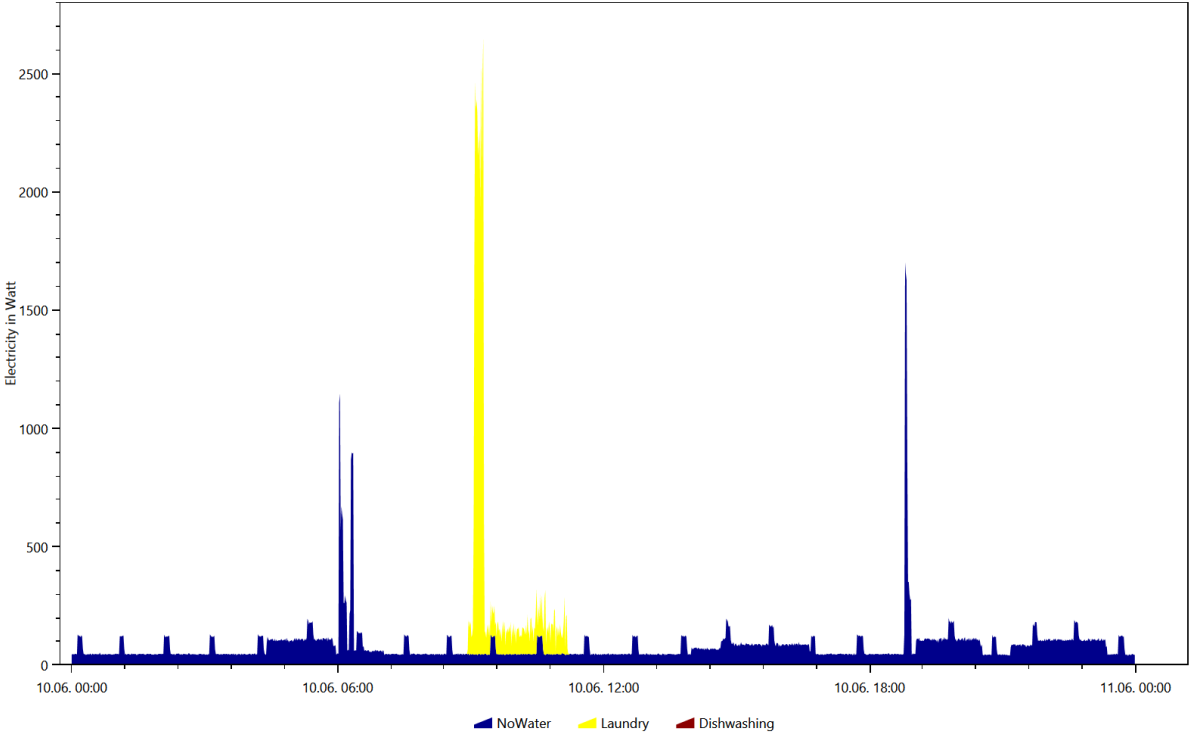
Electricity, Coloring Scheme: Destatis Water Usage Statistics, Date 2016.10.18



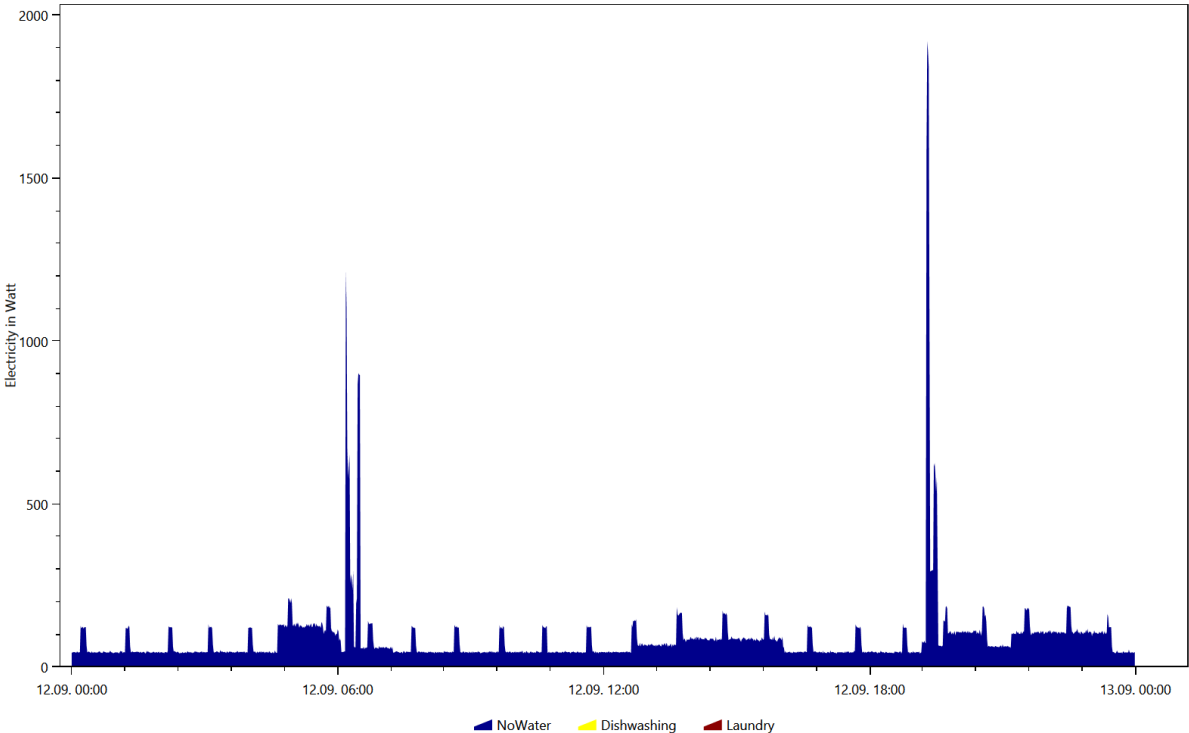
Electricity, Coloring Scheme: Destatis Water Usage Statistics, Date 2016.4.1



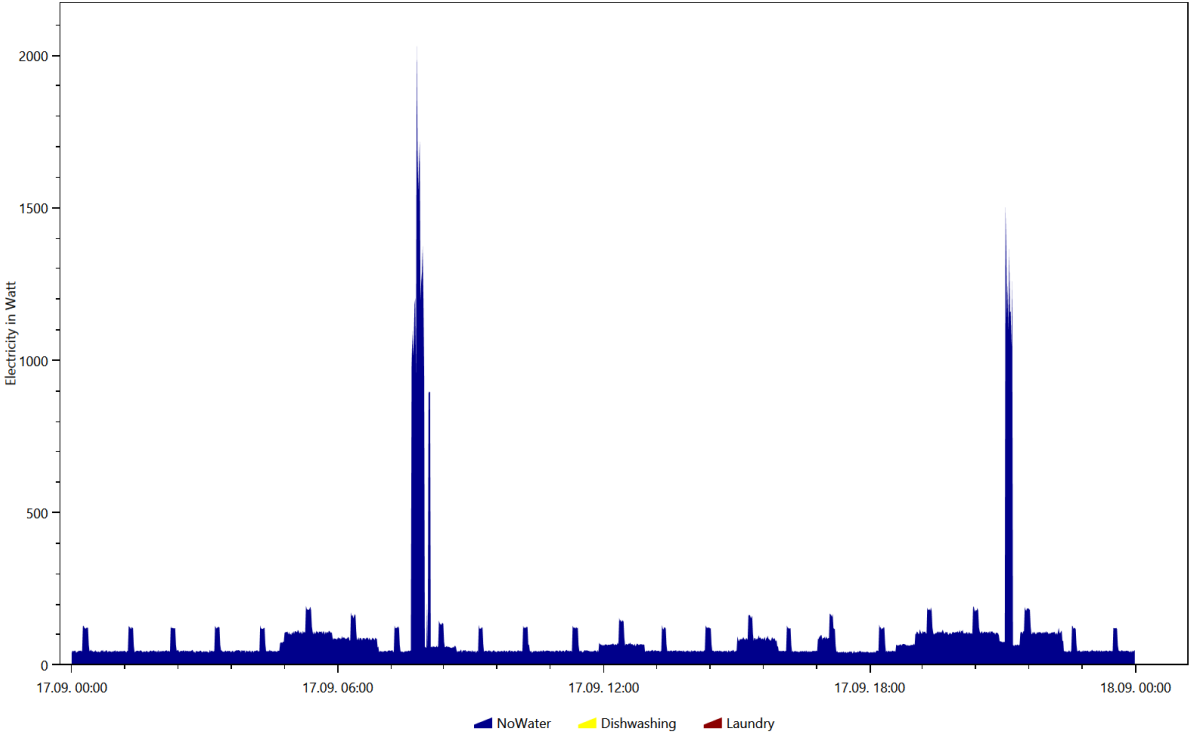
Electricity, Coloring Scheme: Destatis Water Usage Statistics, Date 2016.6.10



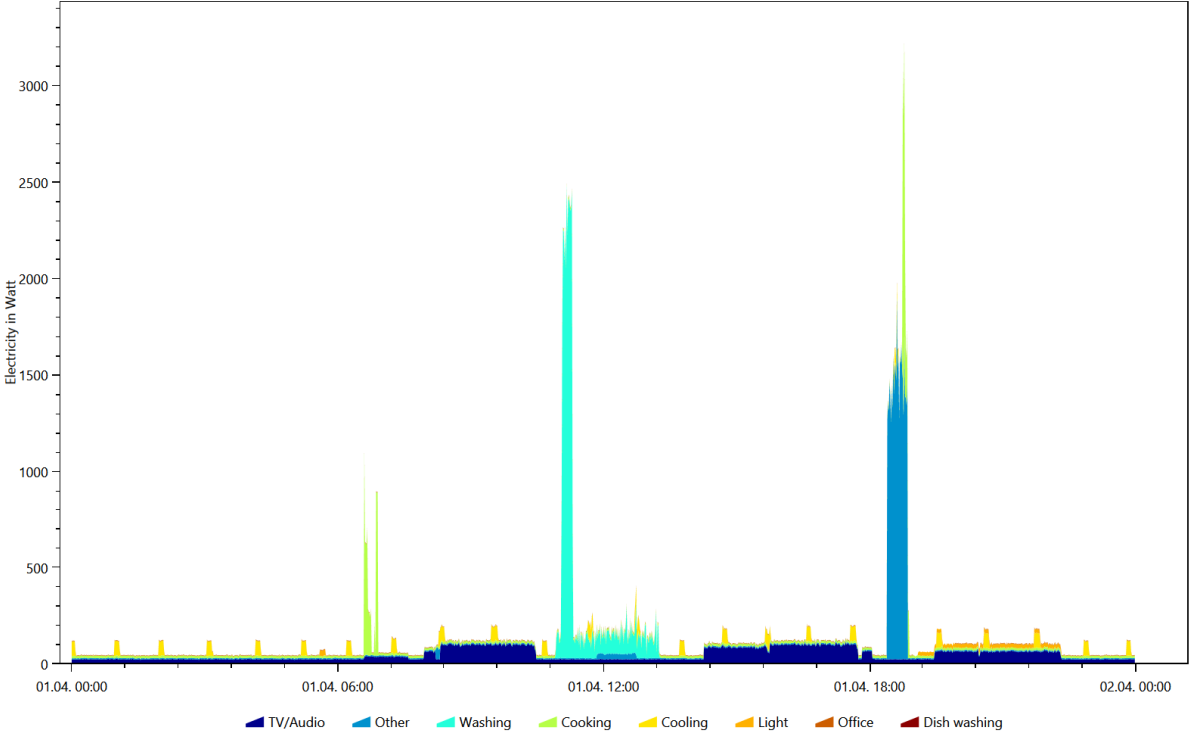
Electricity, Coloring Scheme: Destatis Water Usage Statistics, Date 2016.9.12



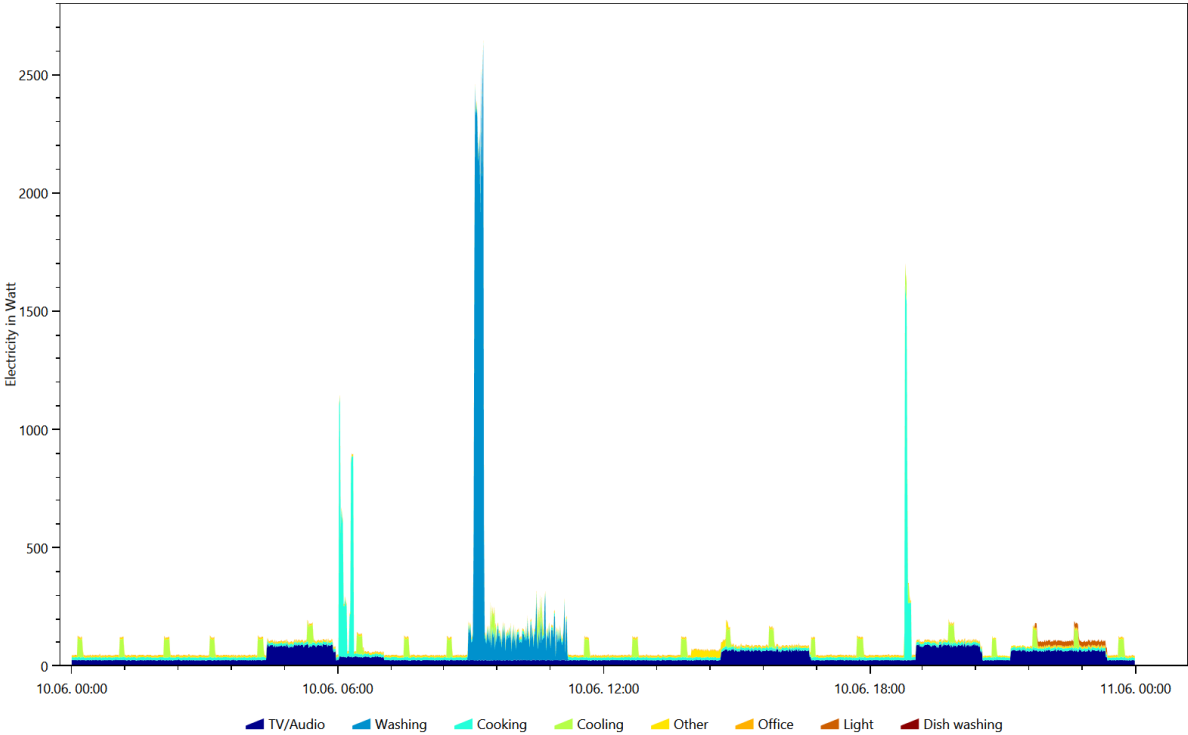
Electricity, Coloring Scheme: Destatis Water Usage Statistics, Date 2016.9.17



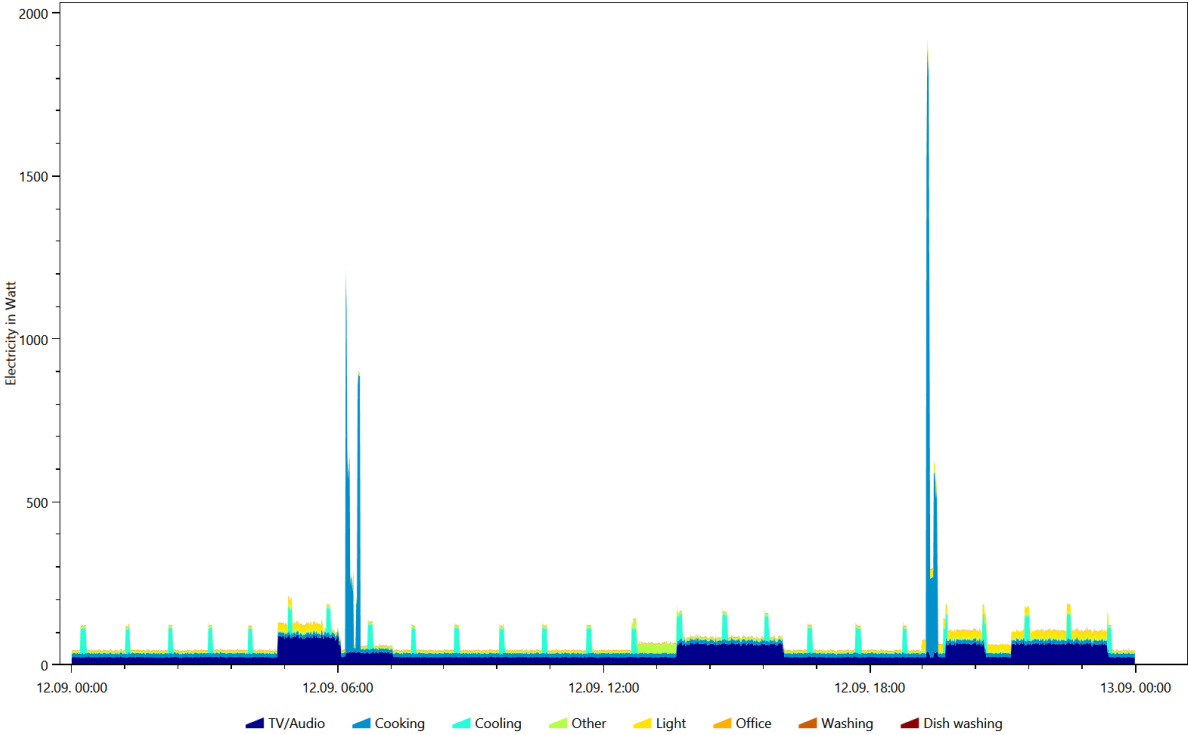
Electricity, Coloring Scheme: Energieagentur.NRW Tags, Date 2016.4.1



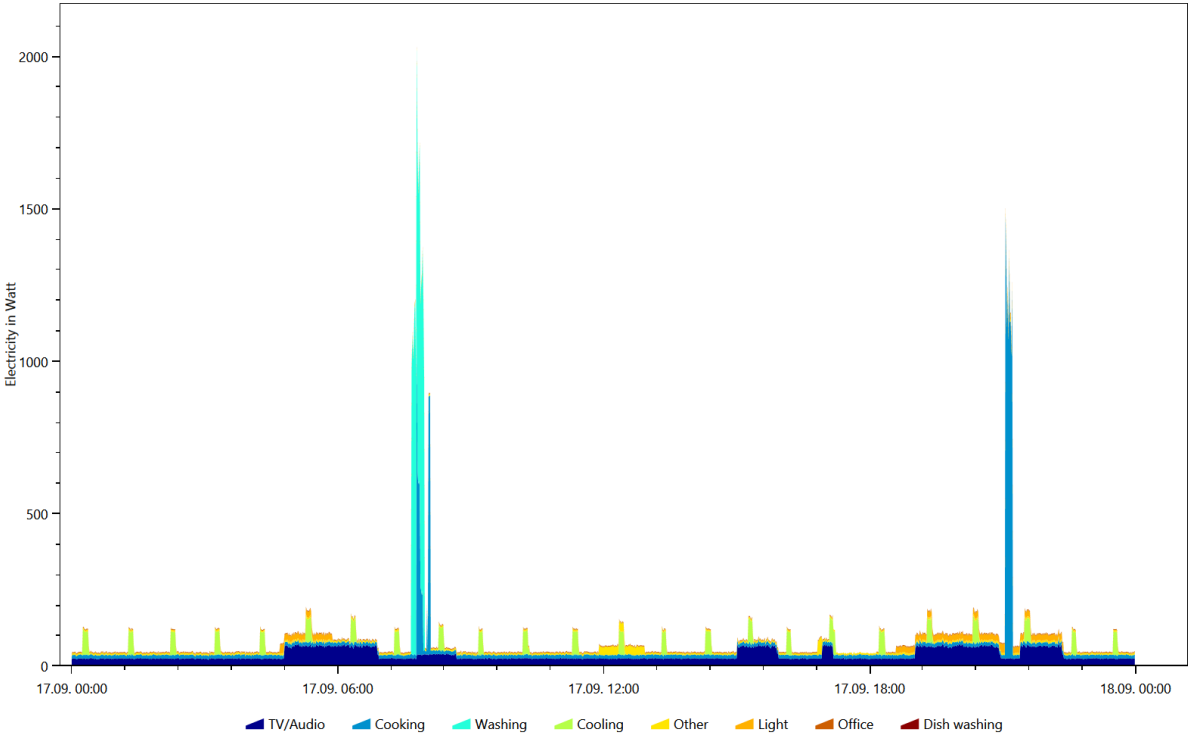
Electricity, Coloring Scheme: Energieagentur.NRW Tags, Date 2016.6.10



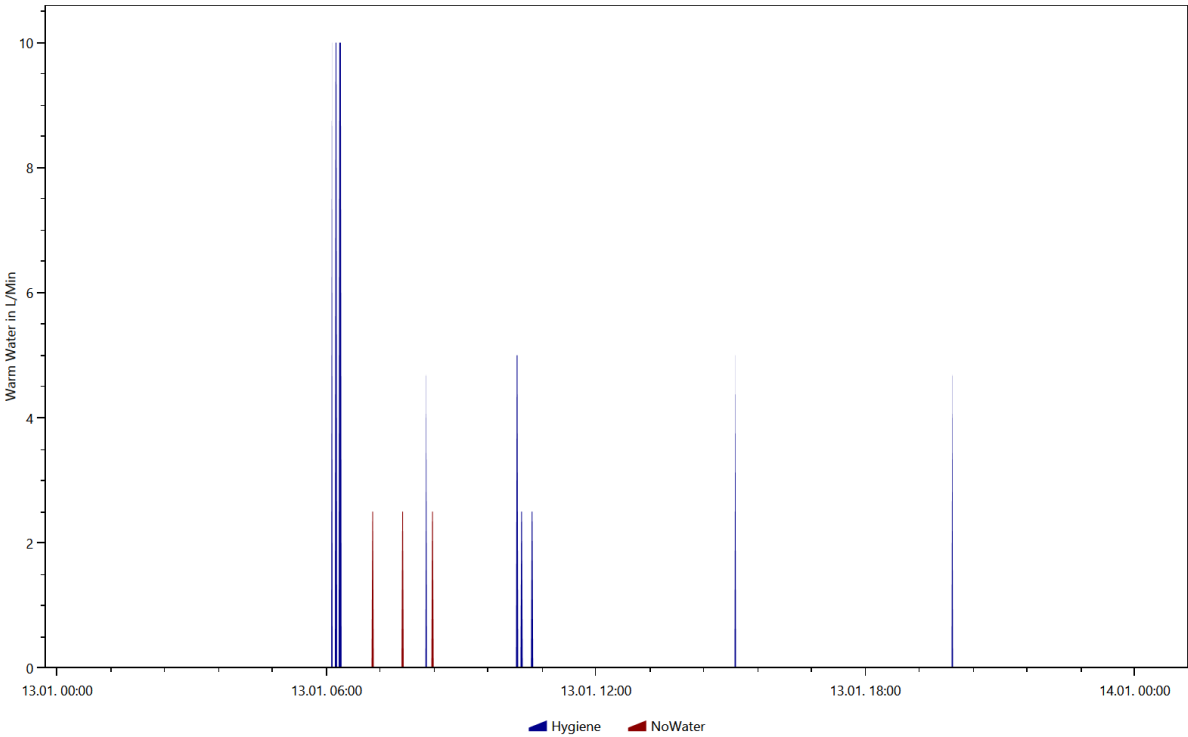
Electricity, Coloring Scheme: Energieagentur.NRW Tags, Date 2016.9.12



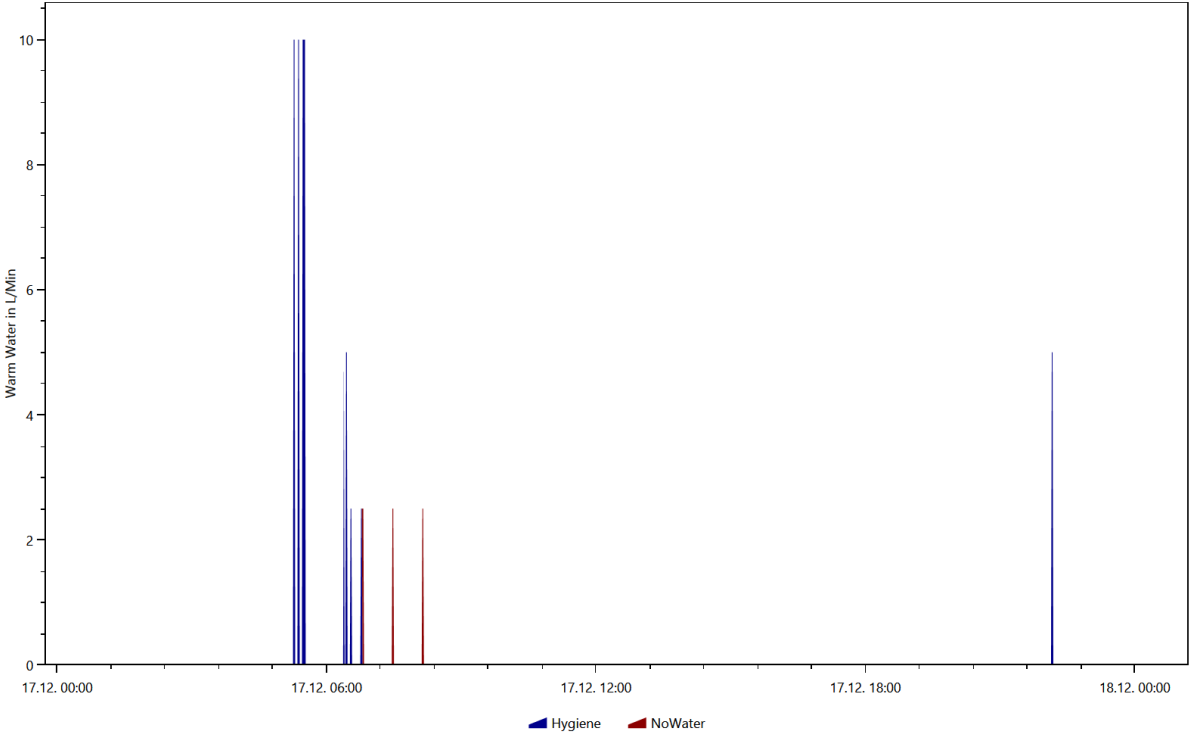
Electricity, Coloring Scheme: Energieagentur.NRW Tags, Date 2016.9.17



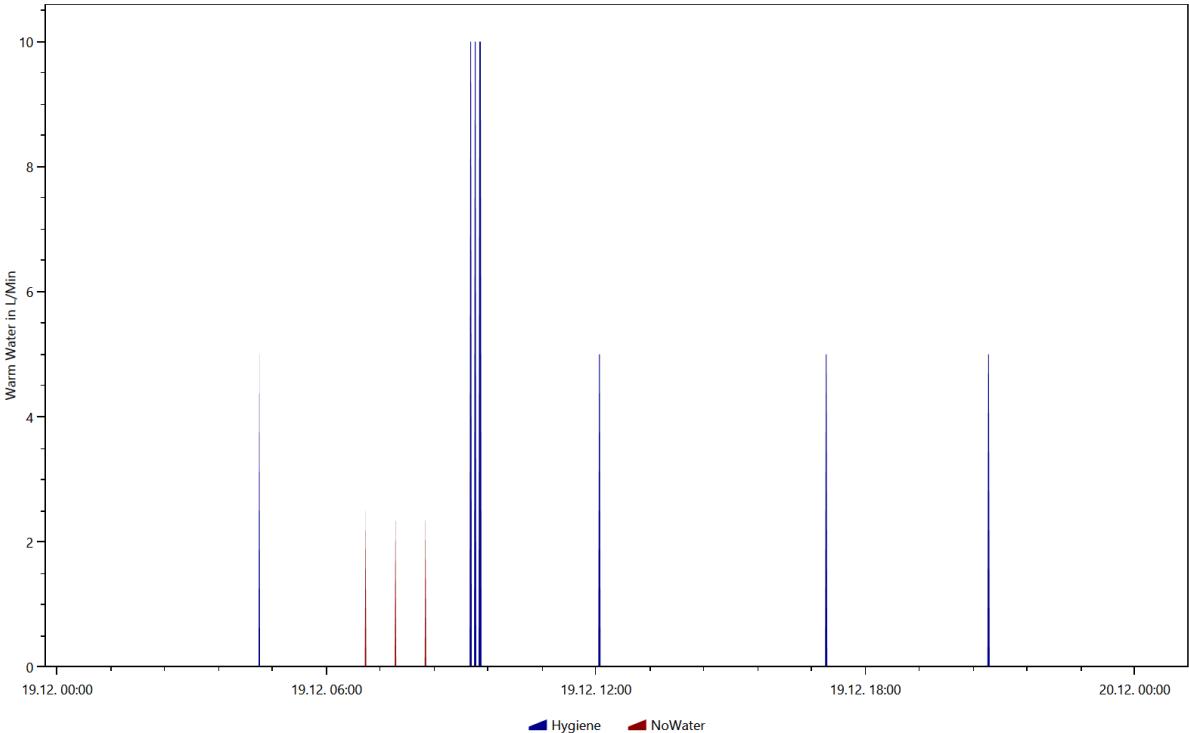
Warm Water, Coloring Scheme: Destatis Water Usage Statistics, Date 2016.1.13



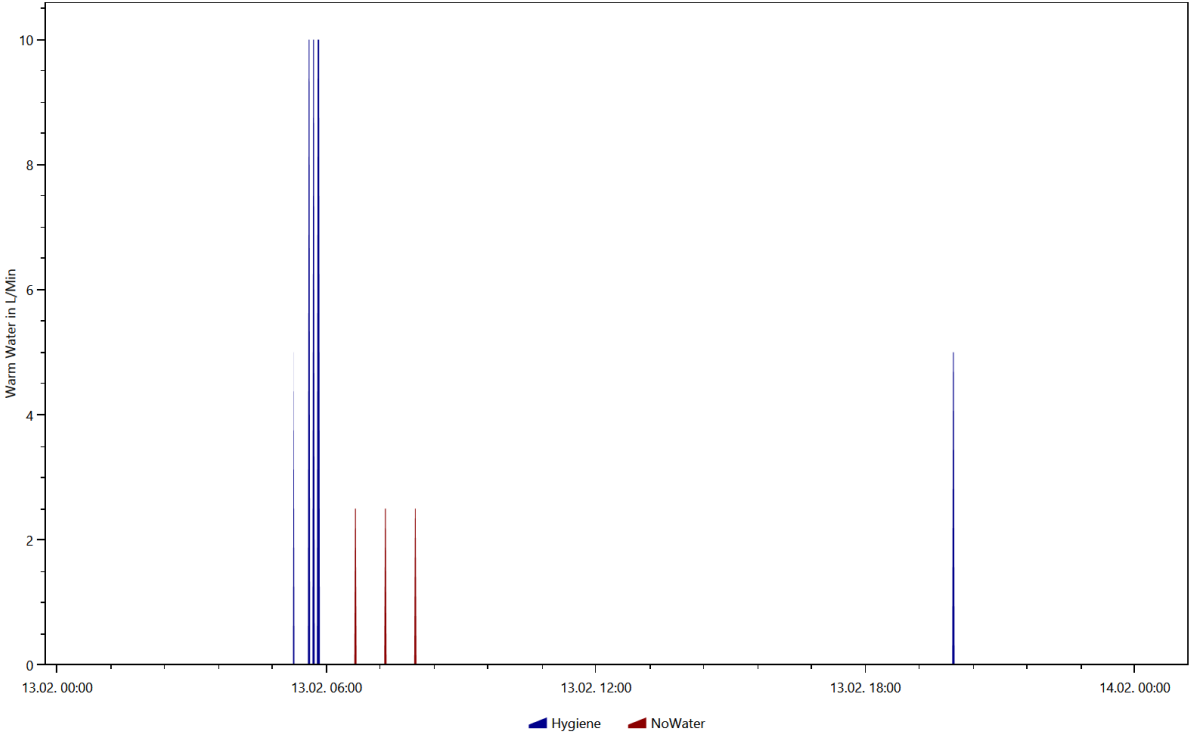
Warm Water, Coloring Scheme: Destatis Water Usage Statistics, Date 2016.12.17



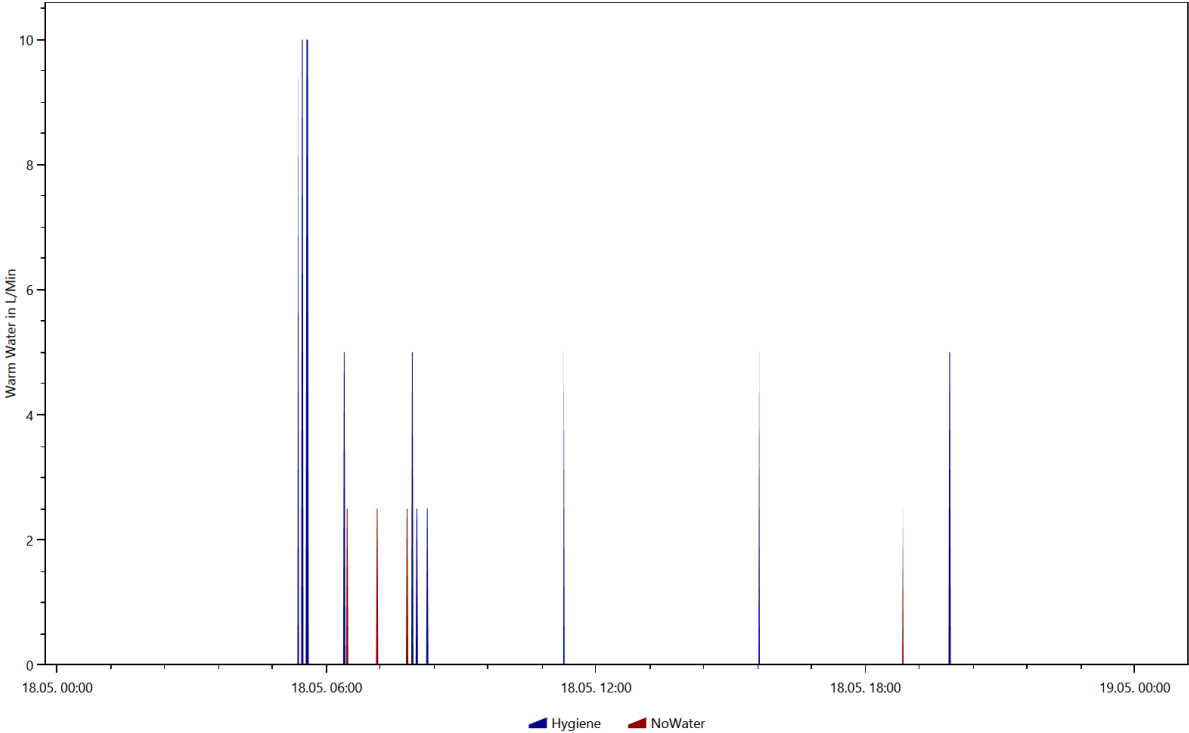
Warm Water, Coloring Scheme: Destatis Water Usage Statistics, Date 2016.12.19



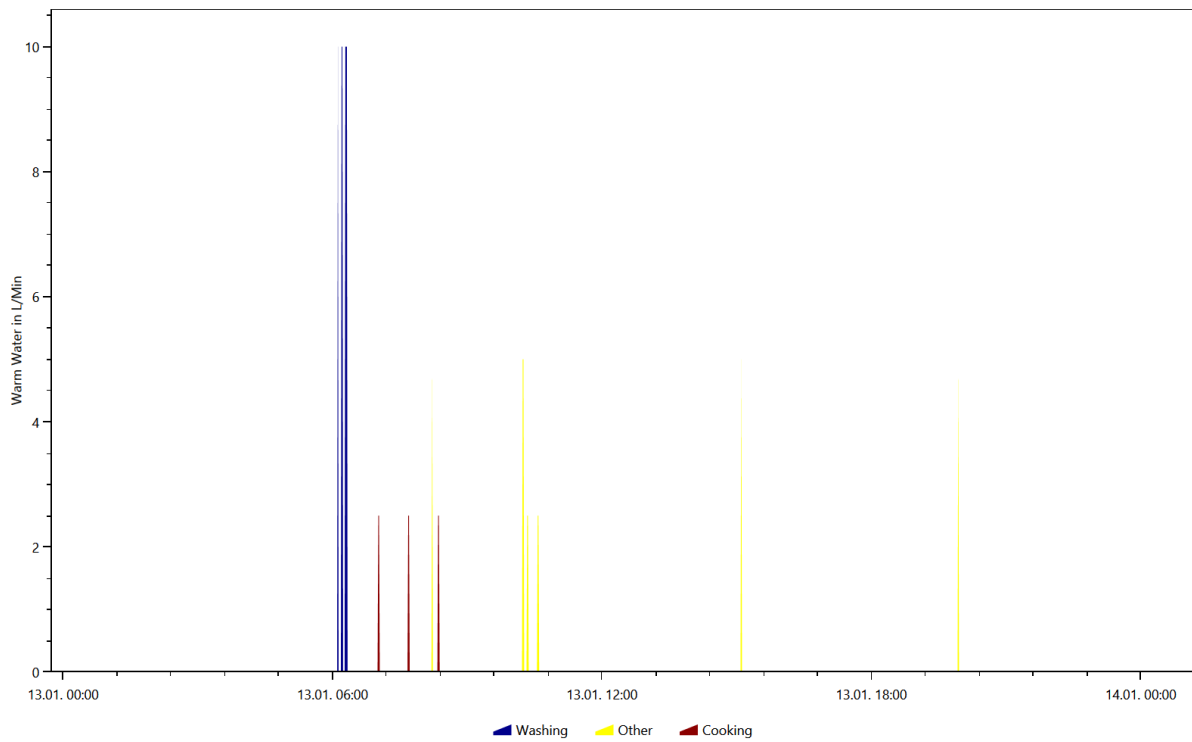
Warm Water, Coloring Scheme: Destatis Water Usage Statistics, Date 2016.2.13



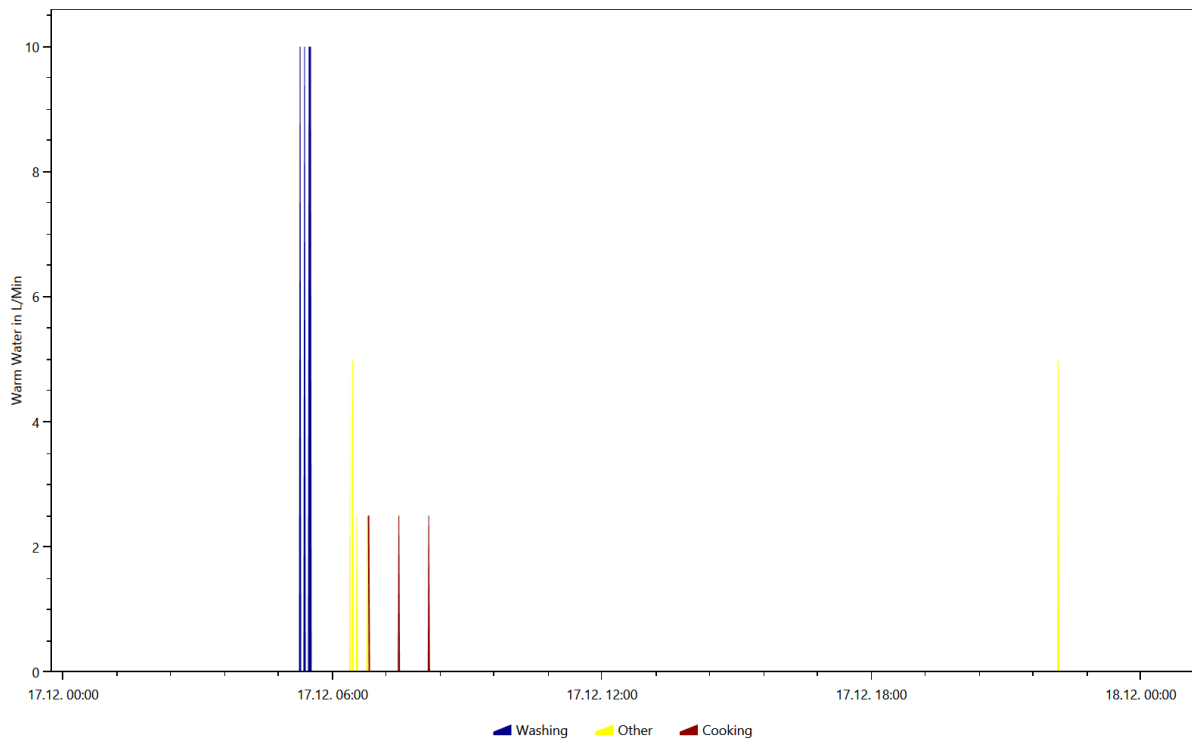
Warm Water, Coloring Scheme: Destatis Water Usage Statistics, Date 2016.5.18



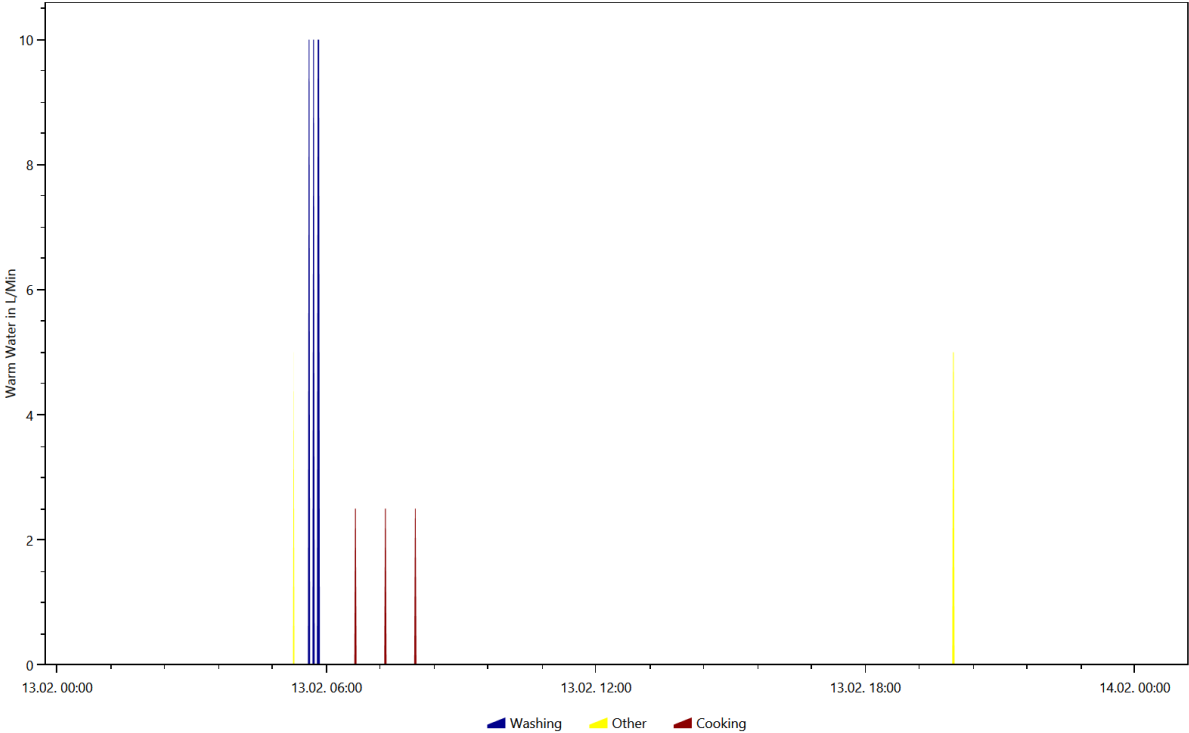
Warm Water, Coloring Scheme: Energieagentur.NRW Tags, Date 2016.1.13



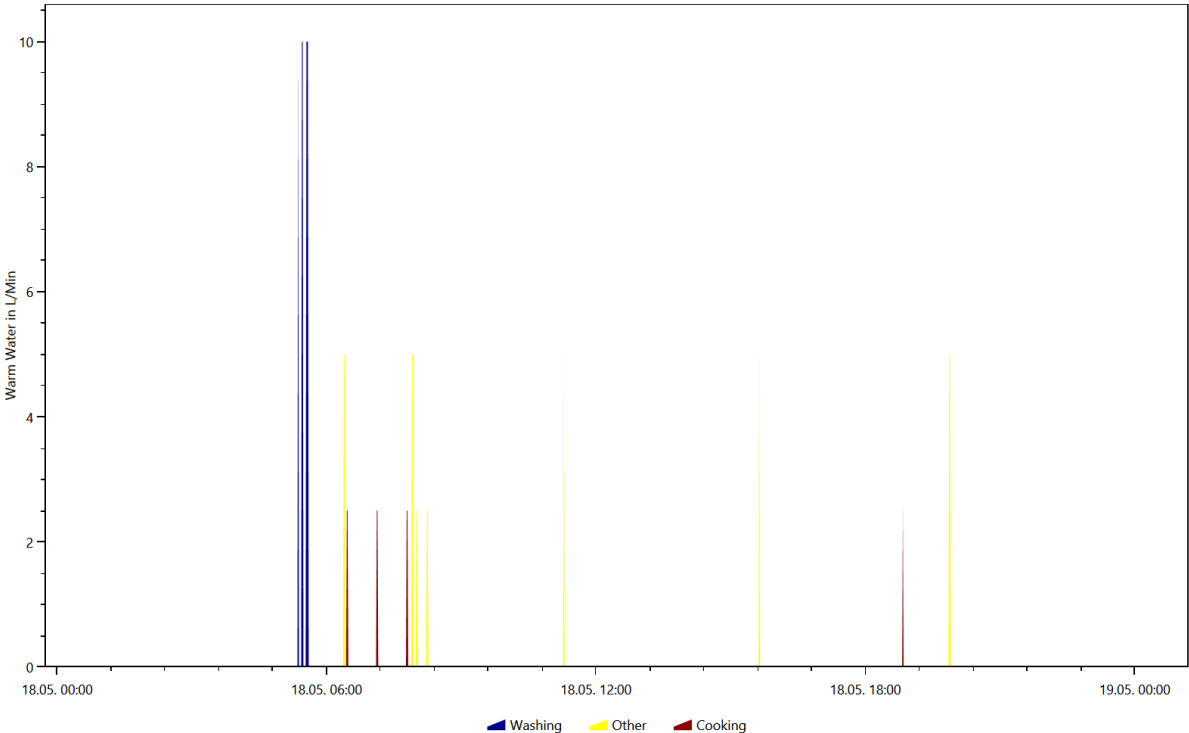
Warm Water, Coloring Scheme: Energieagentur.NRW Tags, Date 2016.12.17



Warm Water, Coloring Scheme: Energieagentur.NRW Tags, Date 2016.2.13



Warm Water, Coloring Scheme: Energieagentur.NRW Tags, Date 2016.5.18

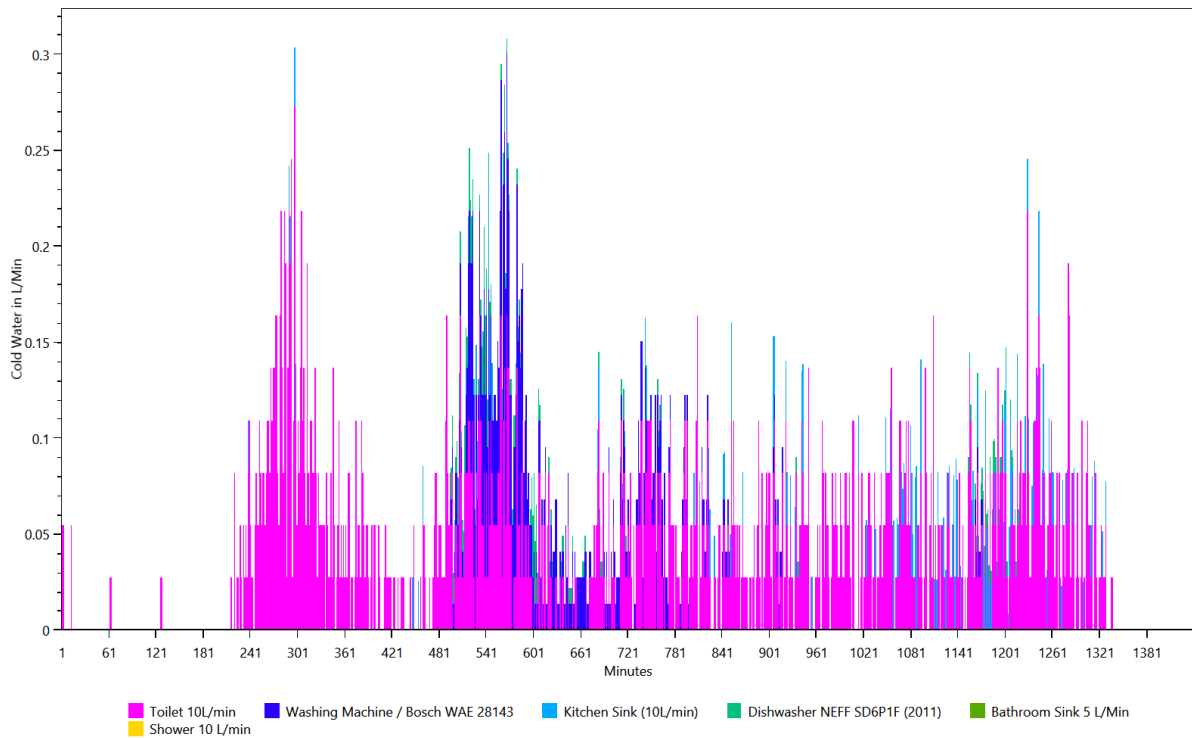


Overview of the time and power of the use per load type per device

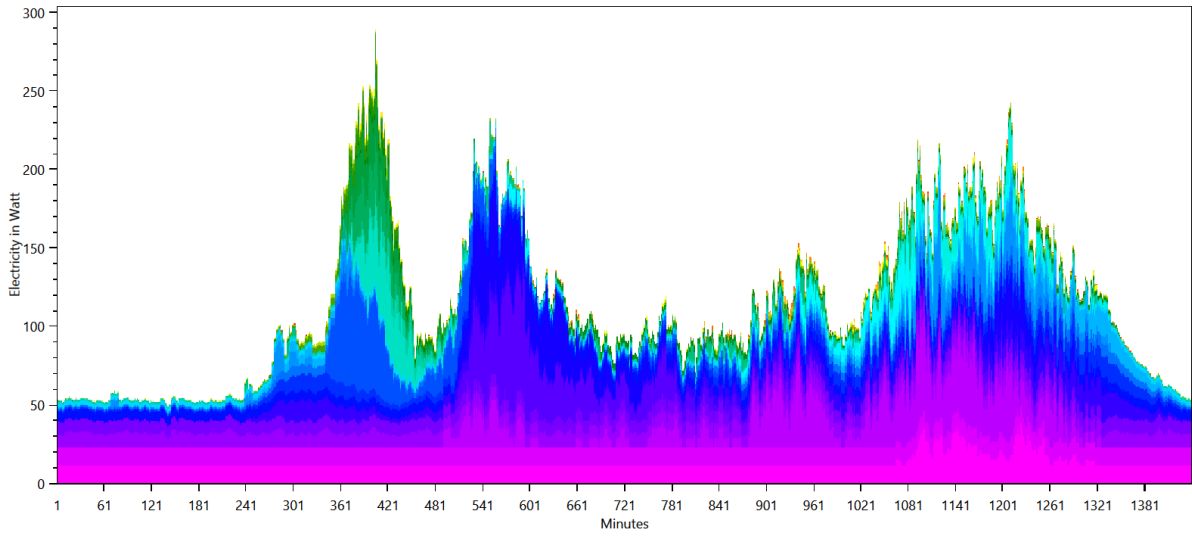
This is made from the files starting with: **TimeOfUseEnergyProfiles**

The time of use energy profiles show when each device was used and how much power it used.

Cold Water

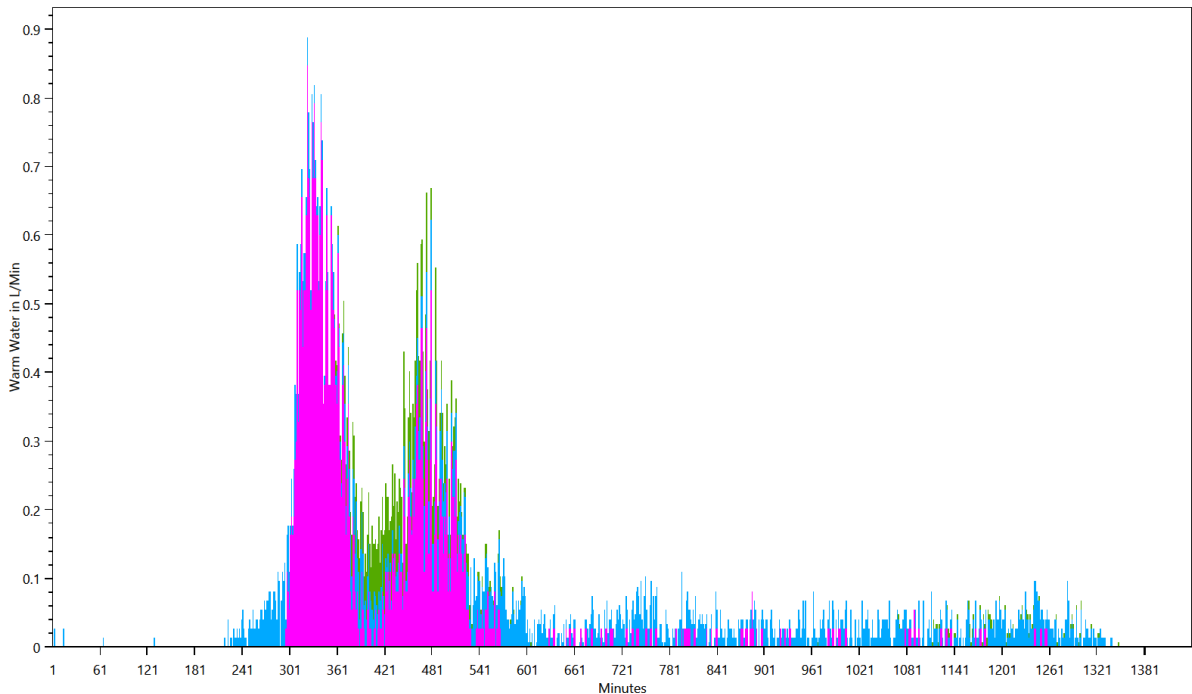


Electricity



- Microwave / Panasonic NN 5259
- Washing Machine / Bosch WAE 28143
- CD/DVD Player / Philips DVDR 725 H
- Kitchen Stove / Bauknecht Heko 750 PT Kitchen stove left hind - full power
- Canister vacuum cleaner / Siemens VS 06 G 1831
- Electric Kettle / Petra WK288 1.5L
- Nespresso Coffee Machine, Single Cup
- Bathroom Mirror Light 10 W (LED)
- Food Slicer / DOMO Schneidemaschine DO521S
- Bedroom Light (20W)
- Yamaha RX-V667
- TV Medion MD20123_DE_A
- Hair Dryer Braun Silencio 1250
- Juicer / Moulinex Vitafruit
- Bathroom Light (20W)
- Electric Toothbrush Dondodent Professional Clean
- Eye Glass Cleaner Grundig UC 5020
- Miele DG 1450
- Dishwasher NEFF SD6P1F (2011)
- SAT Receiver / Kathrein UFS913
- Egg Cooker / Russell Hobbs 14048-56 Stylo
- Extractor Hood / Miele DA 429-4
- Siemens KI 20 LA 65 (A+)
- Cordless Screwdriver / Bosch PSR 18 LI-2
- Living Room Light (Energy Saving Lamp, 20W)
- Toaster Salco MT 400
- AEG NM 2701 Premium
- Handheld Circular Saw / Bosch PKS 46
- AEG PN 2200 RX 4935365097
- Panasonic Hifi System (unknown type)
- Phone Siemens Gigaset C320
- Kitchen radio / AEG KRC 4323 CD
- Kitchen Light (20W)
- Handmixer / Phillips Robust HR 1581
- Skil 4270
- AEG SB 2E 650 R
- Energy Saving Lamp / EL-REF 11 E27

Warm Water



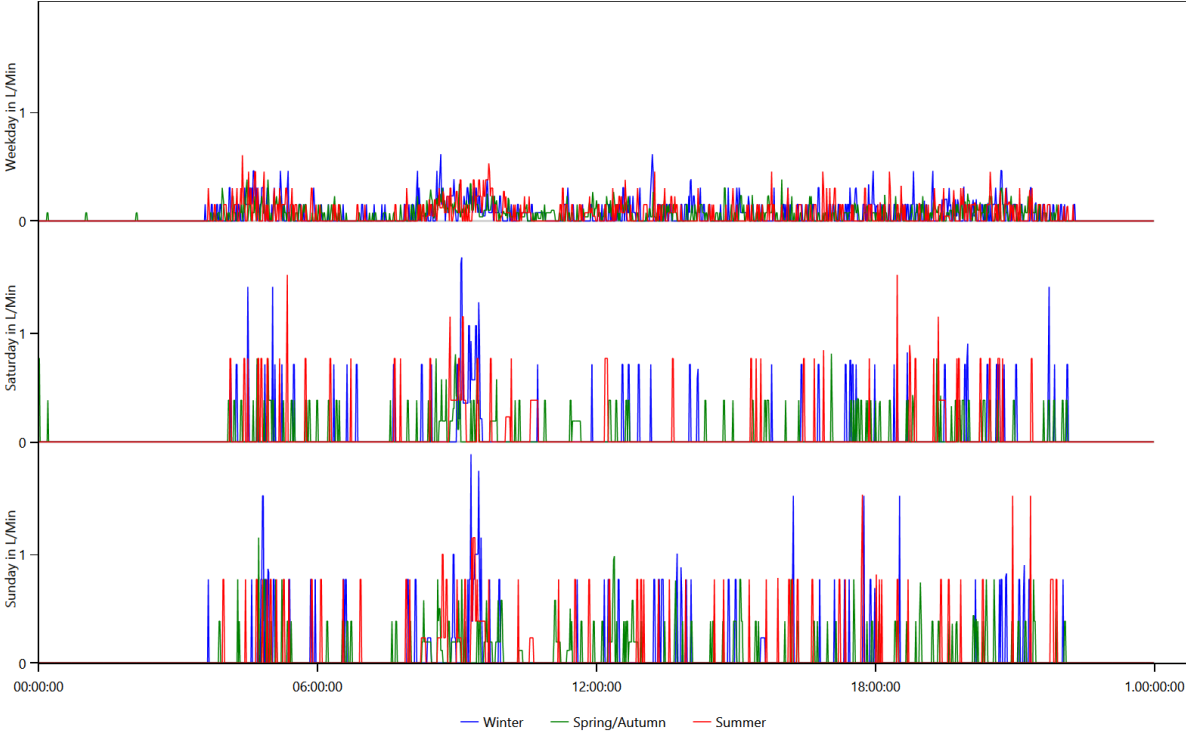
- Shower 10 L/min
- Bathroom Sink 5 L/Min
- Kitchen Sink (10L/min)

Energy use per load type during different seasons, split by weekday/saturday/sunday

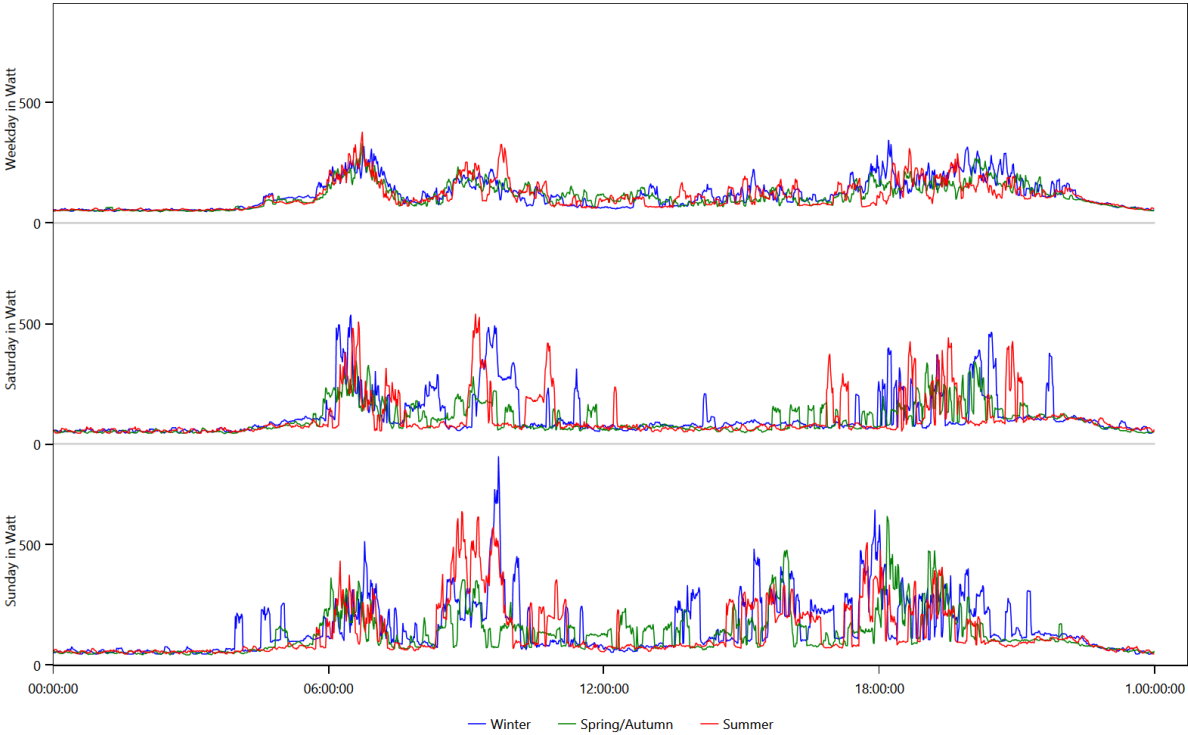
This is made from the files starting with: WeekdayProfiles

This graph shows for each load type the average power consumption per day grouped by season and weekday/saturday/sunday.

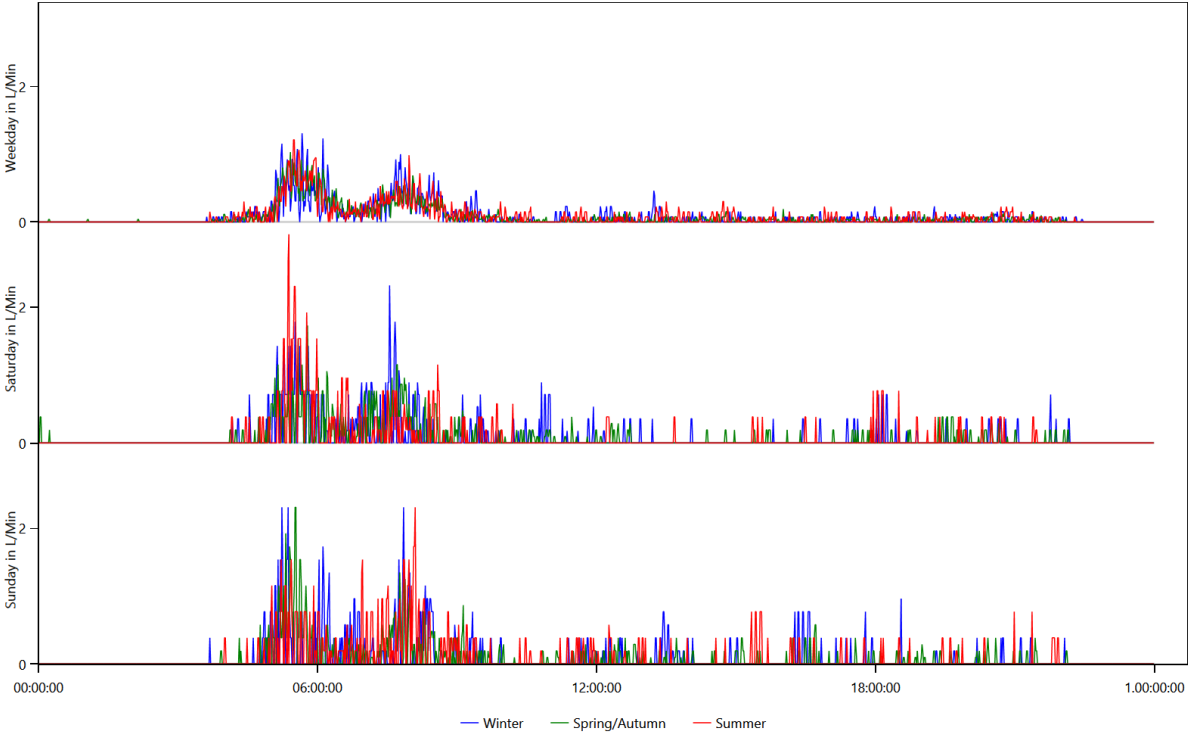
Cold Water



Electricity



Warm Water

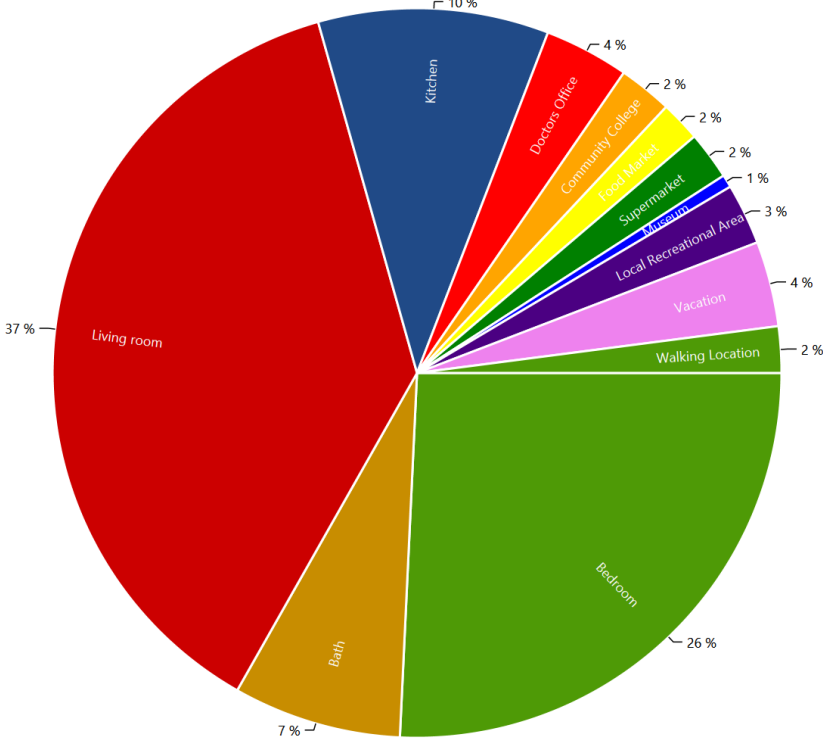


Location Distribution per Person

This is made from the files starting with: LocationStatistics

These charts show where the persons spend their time.

CHR31 Monika (68 Female)



Actions.csv

This is made from the files starting with: Actions

These files show the actions of each person in the household. The content looks like this:

Actions.HH0.csv

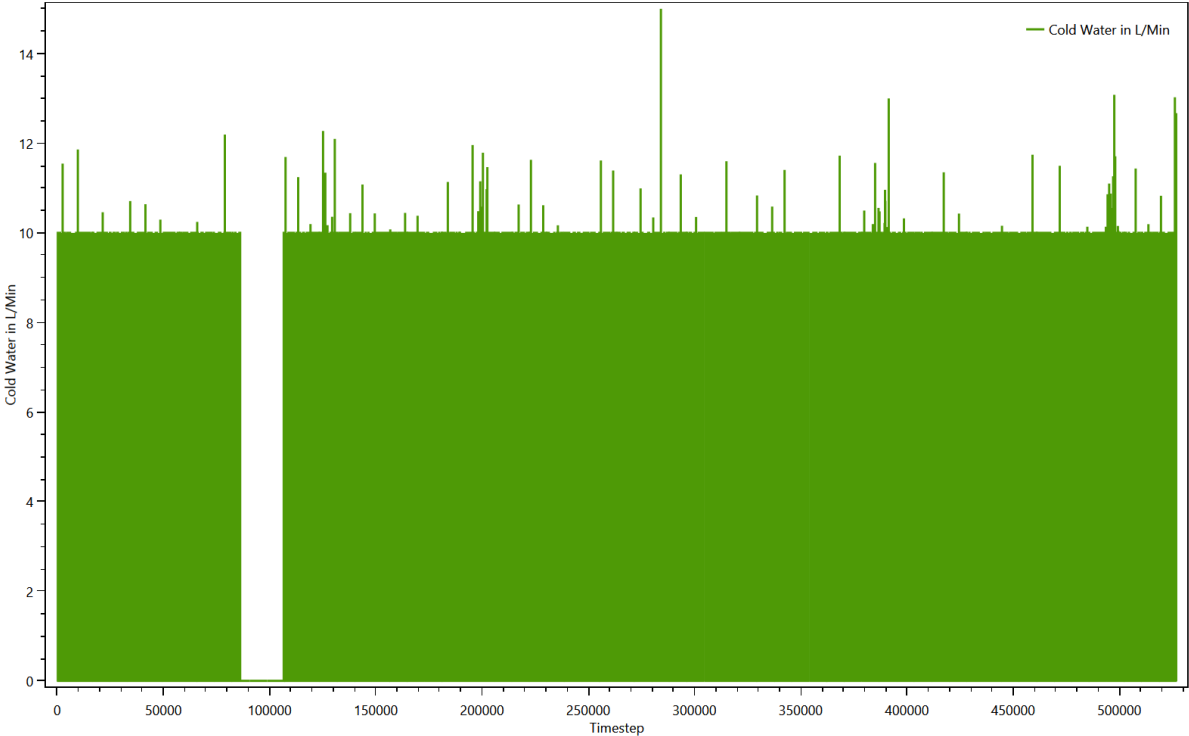
Time step;Calendertime;Person;Selected affordance;Affordance Category;Is Sick
0;01.01.2016 00:00;CHR31 Monika (68/Female);sleep bed 01 (06 h);sleep;False;
269;01.01.2016 04:29;CHR31 Monika (68/Female);go to the toilet;hygiene;False;
275;01.01.2016 04:35;CHR31 Monika (68/Female);watch the news;Passive Entertainment (TV etc.);False;
288;01.01.2016 04:48;CHR31 Monika (68/Female);clean eye glasses;cleaning;False;
294;01.01.2016 04:54;CHR31 Monika (68/Female);watch a movie for 2 h;Passive Entertainment (TV
etc.);False;
403;01.01.2016 06:43;CHR31 Monika (68/Female);eat breakfast (1 h);cooking;False;
472;01.01.2016 07:52;CHR31 Monika (68/Female);go to the toilet;hygiene;False;
478;01.01.2016 07:58;CHR31 Monika (68/Female);go to doctor;work;False;
725;01.01.2016 12:05;CHR31 Monika (68/Female);take a shower with hair washing (women) (20 min hair
drying);hygiene;False;
793;01.01.2016 13:13;CHR31 Monika (68/Female);sewing cloths;cleaning;False;
904;01.01.2016 15:04;CHR31 Monika (68/Female);go to the toilet;hygiene;False;
909;01.01.2016 15:09;CHR31 Monika (68/Female);take a nap;sleep;False;
969;01.01.2016 16:09;CHR31 Monika (68/Female);watch sports on TV with SAT Reciever (2 h);Passive
Entertainment (TV etc.);False;
1100;01.01.2016 18:20;CHR31 Monika (68/Female);go to community college;school;False;
1297;01.01.2016 21:37;CHR31 Monika (68/Female);go to the toilet;hygiene;False;
1304;01.01.2016 21:44;CHR31 Monika (68/Female);make frozen pizza and eat it;cooking;False;
1336;01.01.2016 22:16;CHR31 Monika (68/Female);sleep bed 01 (06 h);sleep;False;
1712;02.01.2016 04:32;CHR31 Monika (68/Female);watch a movie for 2 h;Passive Entertainment (TV
etc.);False;
1838;02.01.2016 06:38;CHR31 Monika (68/Female);go to the toilet;hygiene;False;

Sum Profiles

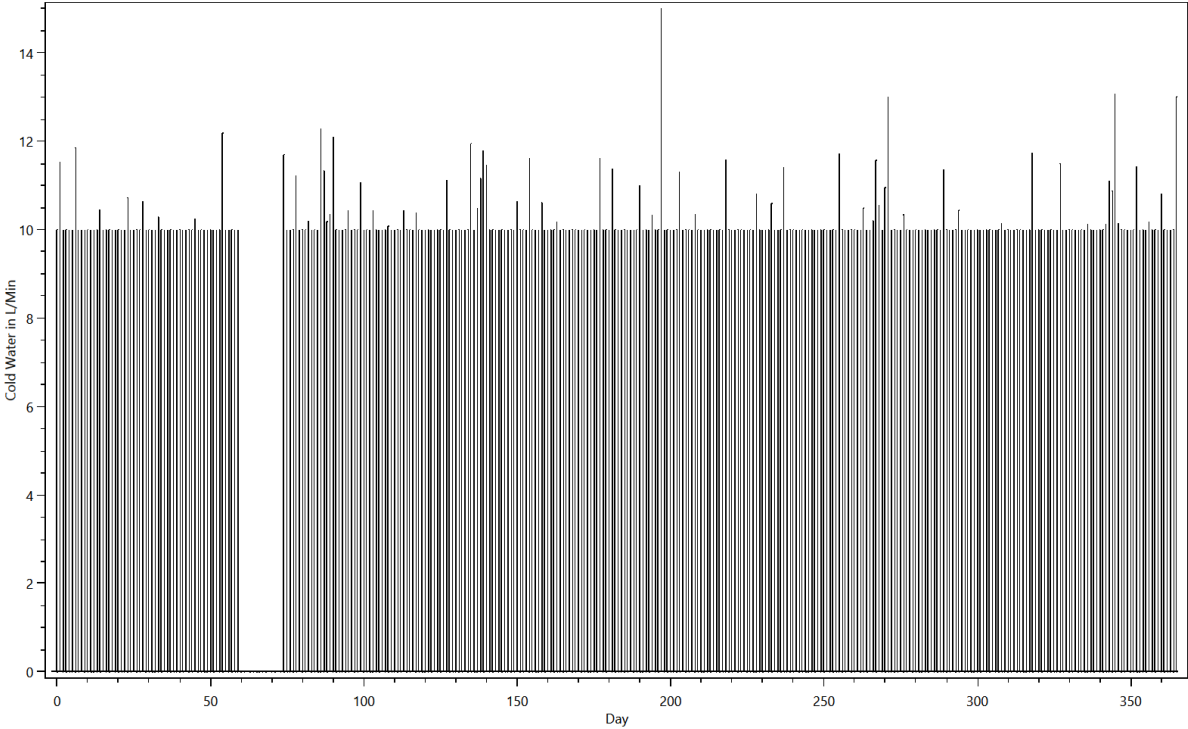
This is made from the files starting with: SumProfiles

This shows the energy use during the simulation.

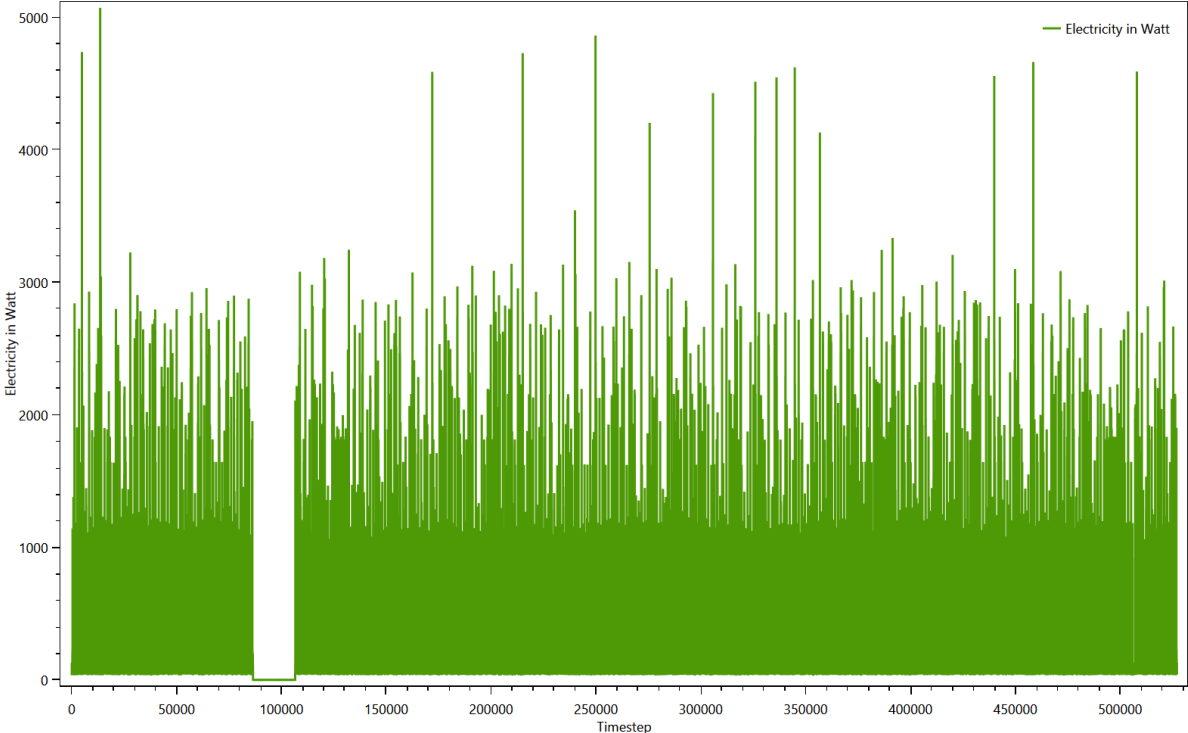
Summed up curve for Cold Water from SumProfiles.Cold Water.png



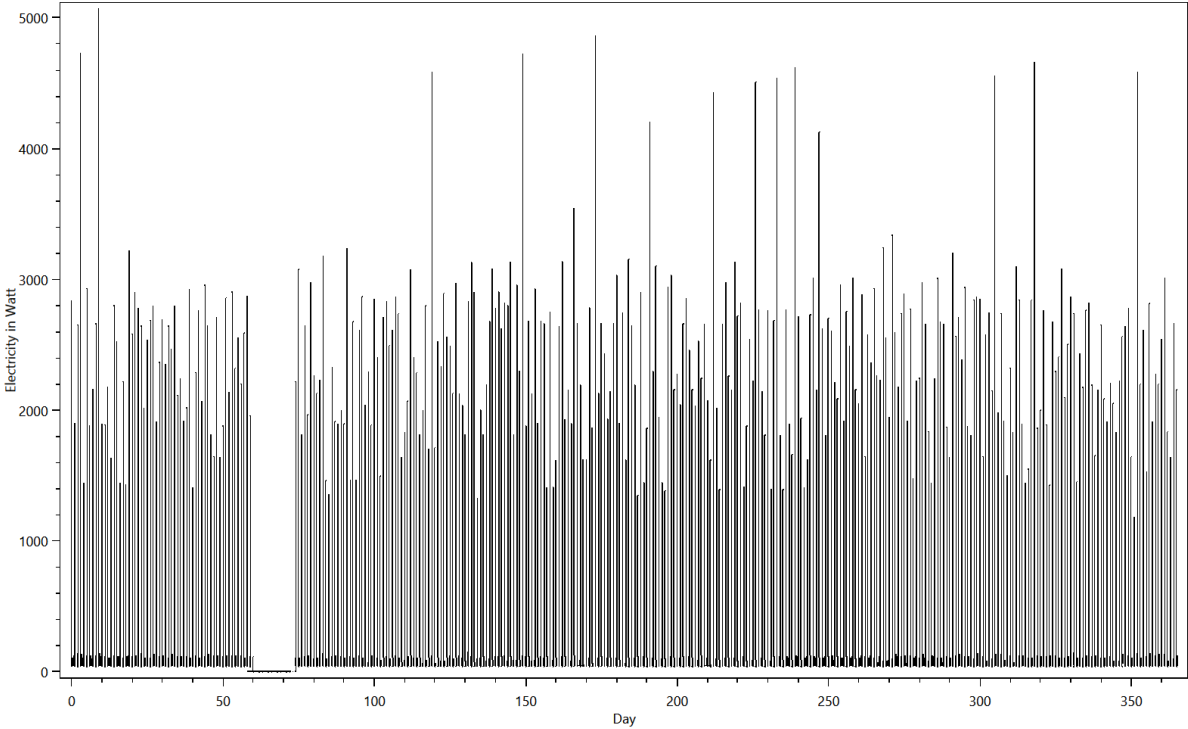
Summed up curve for Cold WaterMinMax from SumProfiles.Cold WaterMinMax.png



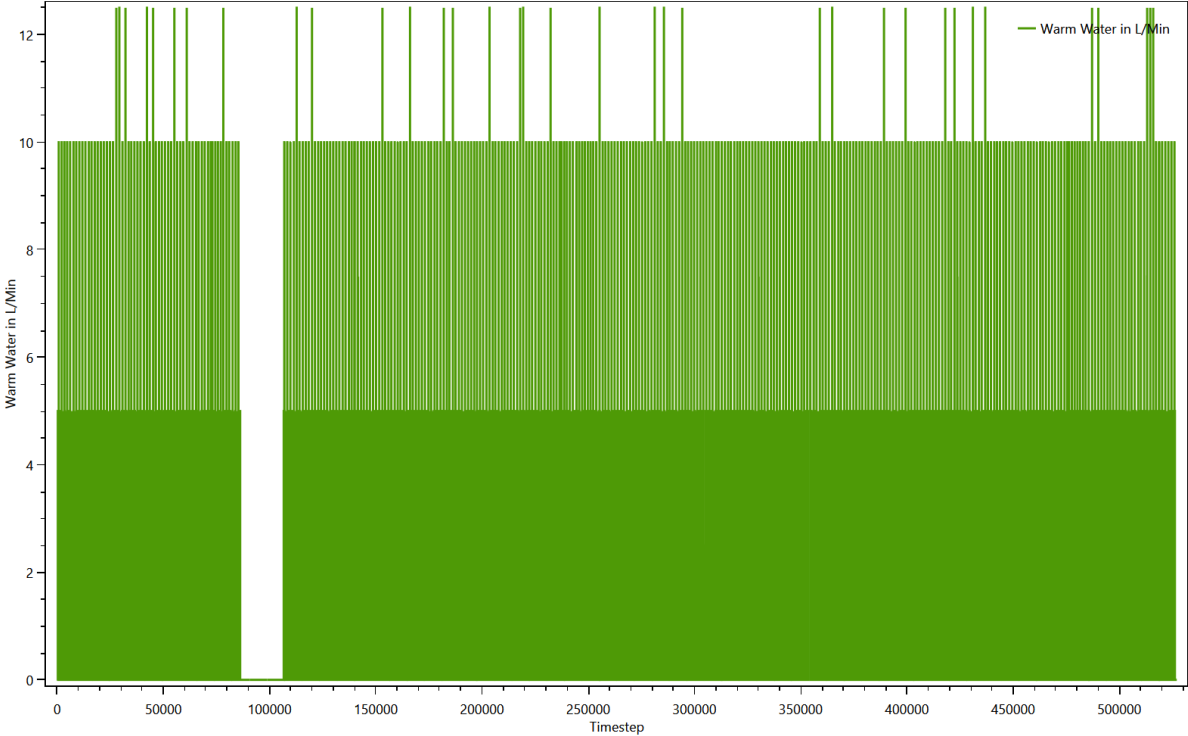
Summed up curve for Electricity from SumProfiles.Electricity.png



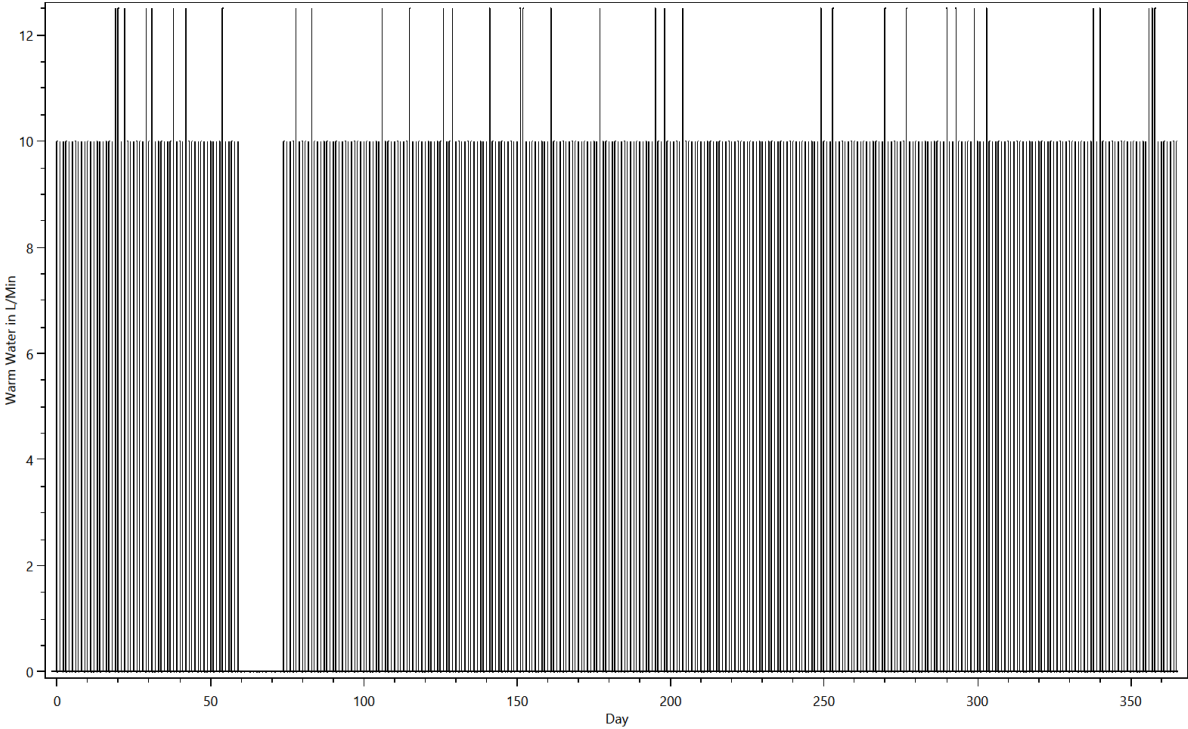
Summed up curve for ElectricityMinMax from SumProfiles.ElectricityMinMax..png



Summed up curve for Warm Water from SumProfiles.Warm Water.png



Summed up curve for Warm WaterMinMax from SumProfiles.Warm WaterMinMax.png



Time Profiles

This is made from the files starting with: Time Profiles

These files show which time profiles were used for each device and how often. The content looks like this:

TimeProfiles.HH0.CHR31 Single, Retired Woman 0.txt

Device;Load Type;Profile;Number of Activations

AEG NM 2701 Premium;Electricity;01 h 0 min 30% [Synthetic];326

AEG PN 2200 RX 4935365097;Electricity;0 h 03 min 100% [Synthetic];24

AEG SB 2E 650 R;Electricity;0 h 03 min 100% [Synthetic];24

Bathroom Light (20W);Electricity;Bath - light [Synthetic for Light Device];766

Bathroom Mirror Light 10 W (LED);Electricity;Bath - light [Synthetic for Light Device];766

Bathroom Sink 5 L/Min;Warm Water;0 h 01 min 100% [Synthetic];1662

Bathroom Sink 5 L/Min;Warm Water;0 h 01 min 50% [Synthetic];450

Bed 1;None;06 h 0 min 100% [Synthetic];354

Bedroom Light (20W);Electricity;Bedroom - light [Synthetic for Light Device];8

CD/DVD Player / Philips DVDR 725 H;Electricity;01 h 30 min 100% [Synthetic];289

CD/DVD Player / Philips DVDR 725 H;Electricity;02 h 0 min 100% [Synthetic];321

CD/DVD Player / Philips DVDR 725 H;Electricity;Standby TV / Receiver 1 h 0 min 3% [Synthetic];8437

Canister vacuum cleaner / Siemens VS 06 G 1831;Electricity;0 h 30 min 100% [Synthetic];28

Cleanser;None;01 h 0 min 100% [Synthetic];94

Cloth Drying Rack;None;0 h 20 min 100% [Synthetic];72

Community College;None;03 h 0 min 100 % [Synthetic];71

Cordless Screwdriver / Bosch PSR 18 LI-2;Electricity;0 h 01 min 100% [Synthetic];24

Cordless Screwdriver / Bosch PSR 18 LI-2;Electricity;01 h 0 min 30% [Synthetic];8450

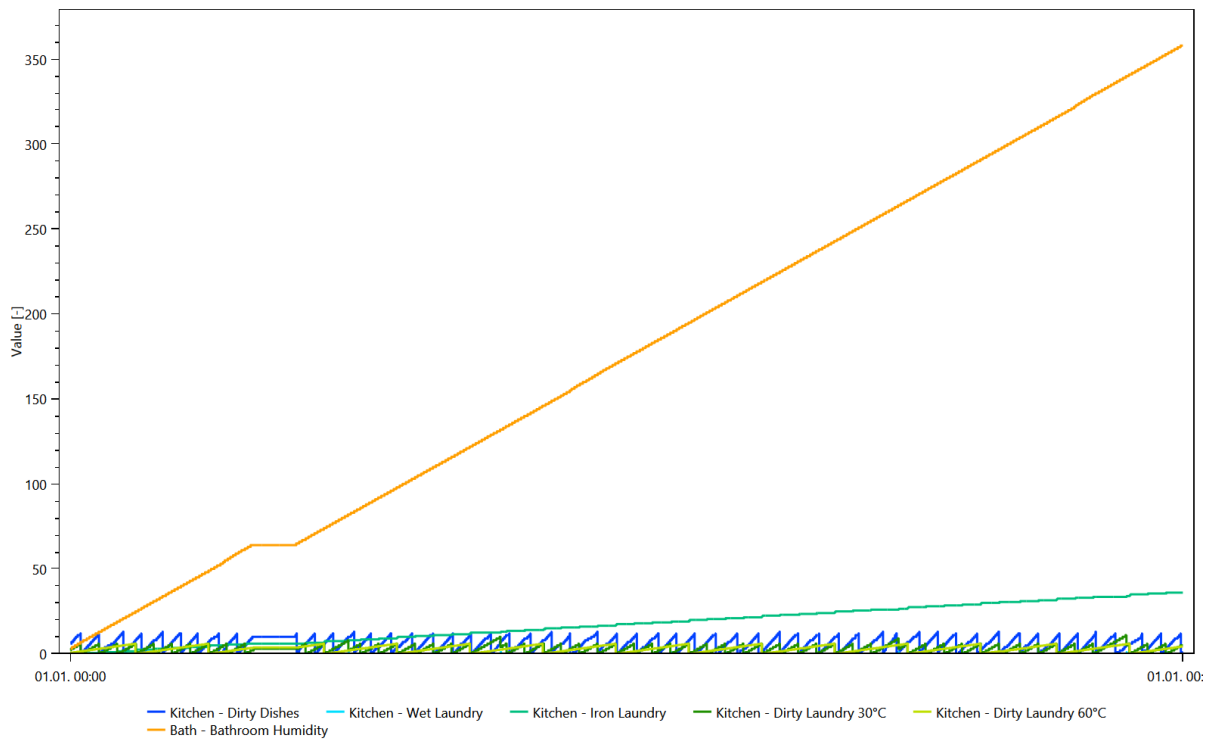
Couch;None;01 h 0 min 100% [Synthetic];276

Variables

This is made from the files starting with: Variablelogfile

The variables are used to keep track of things like dirty laundry, dirty dishes and the amount of laundry to iron. They are used to ensure that for example the dishwasher is only turned on if there are sufficient dirty dishes. One chart shows the first 25000 timesteps of the contents of all variables, the other shows the entire time span.

Variables



Variables

