

Overview of the results of the household CHR36 Single woman, 30 - 64 years, without work 0

Calculation Time

Freitag, 1. Januar 2016 - Sonntag, 1. Januar 2017

Energy Intensity: Random

Seed 1731

LoadProfileGenerator 5.8.0.16019

by Noah Pflugradt

<http://www.loadprofilegenerator.de>

Rendering date:16.12.2016 09:19:44

Table of Contents

Totals.....	3
Persons.....	5
Activity Frequency Charts.....	6
Activity Distribution per Person.....	7
Time Use per Person per Affordance Per Person.....	8
Energy use per person per affordance.....	10
Time Use per Person Per Affordance according to different category definitions.....	12
Overview of the actions of each member of the household.....	14
Overview of the time of the use per load type per device.....	15
Energy/Resource use distribution per load type per affordance.....	17
Energy use for each load type for each device.....	22
Duration curve for each device for each load type.....	26
Duration curve for each load type.....	28
Grouped energy use for each load type for each device.....	30
Example of the device profiles for each load type.....	34
Overview of the time and power of the use per load type per device.....	48
Energy use per load type during different seasons, split by weekday/saturday/sunday.....	50
Location Distribution per Person.....	52
Actions.csv.....	53
Sum Profiles.....	54
Time Profiles.....	58
Variables.....	59

Totals

Totals for each Loadtype

Load Type	Value	Unit
Cold Water	10009.42	L
Electricity	1463.03	kWh
Warm Water	26330.00	L

Totals for each Loadtype per Day

Load Type	Value	Unit
Cold Water	27.35	L
Electricity	4.00	kWh
Warm Water	71.94	L

Minimum and Maximum for each Loadtype

Household	Minimum	Maximum	Unit
Cold Water	0.00	11.79	L/Min
Electricity	-41.96	6960.78	Watt
Warm Water	0.00	10.00	L/Min

Totals for each Loadtype per Person

Load Type	Value	Unit
Cold Water	10009.42	L
Electricity	1463.03	kWh

Warm Water	26330.00	L
------------	----------	---

Totals for each Loadtype per Person per Day

Load Type	Value	Unit
Cold Water	27.35	L
Electricity	4.00	kWh
Warm Water	71.94	L

Persons

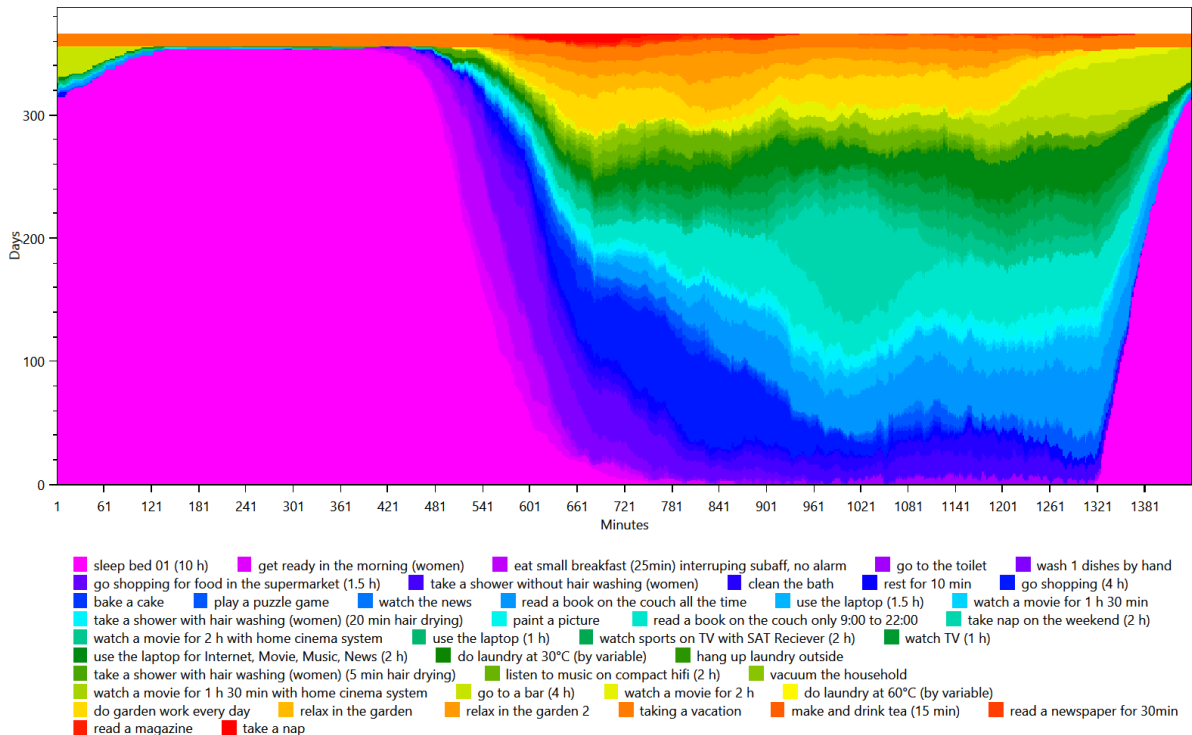
- HH0
 - CHR36 Anne (51/Female)(51/Female)

Activity Frequency Charts

This is made from the files starting with: ActivityFrequenciesPerMinute

These charts show an ordered distribution of times of the activities of each person. This helps with judging quickly if a person is sleeping correctly and if they are going to work regularly.

HH0 - CHR36 Anne (51 Female)

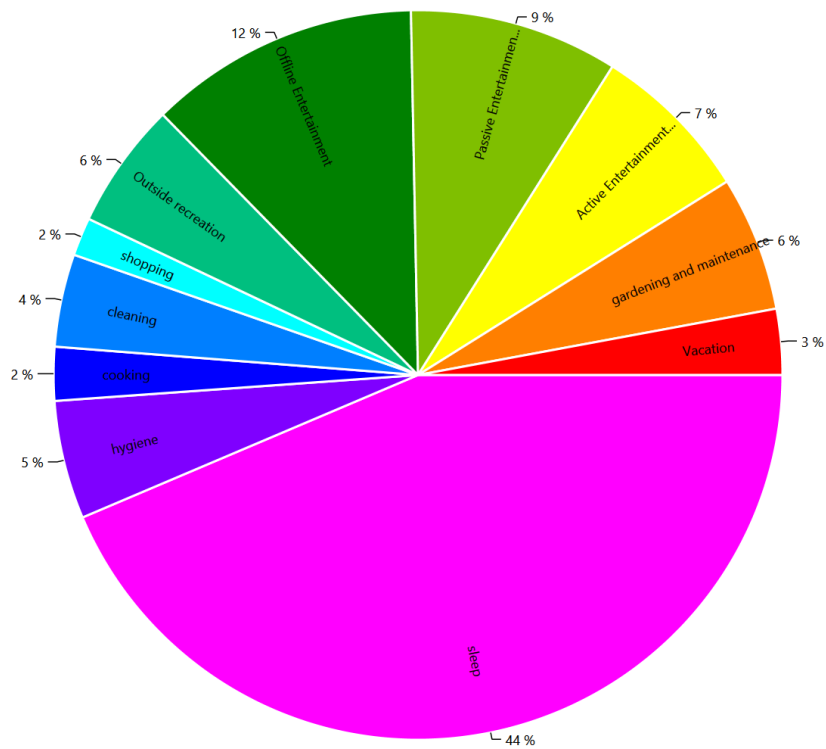


Activity Distribution per Person

This is made from the files starting with: ActivityPercentage

This shows the distribution of the activities, grouped by the affordance AffordanceToCategories.

HH0 - CHR36 Anne (51 Female)

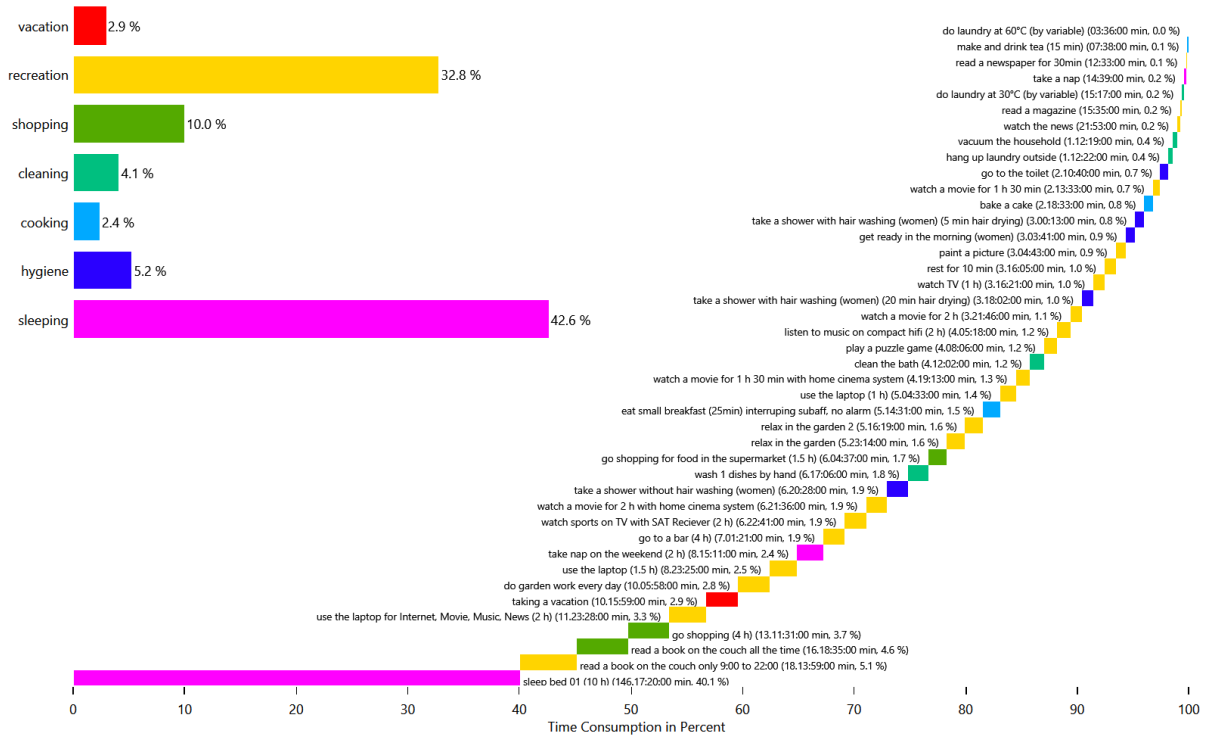


Time Use per Person per Affordance Per Person

This is made from the files starting with: AffordanceTimeUse

These charts show how the people in the household use their time. This shows the individual affordances to help find problems in the household definition.

HH0 - CHR36 Anne (51 Female)

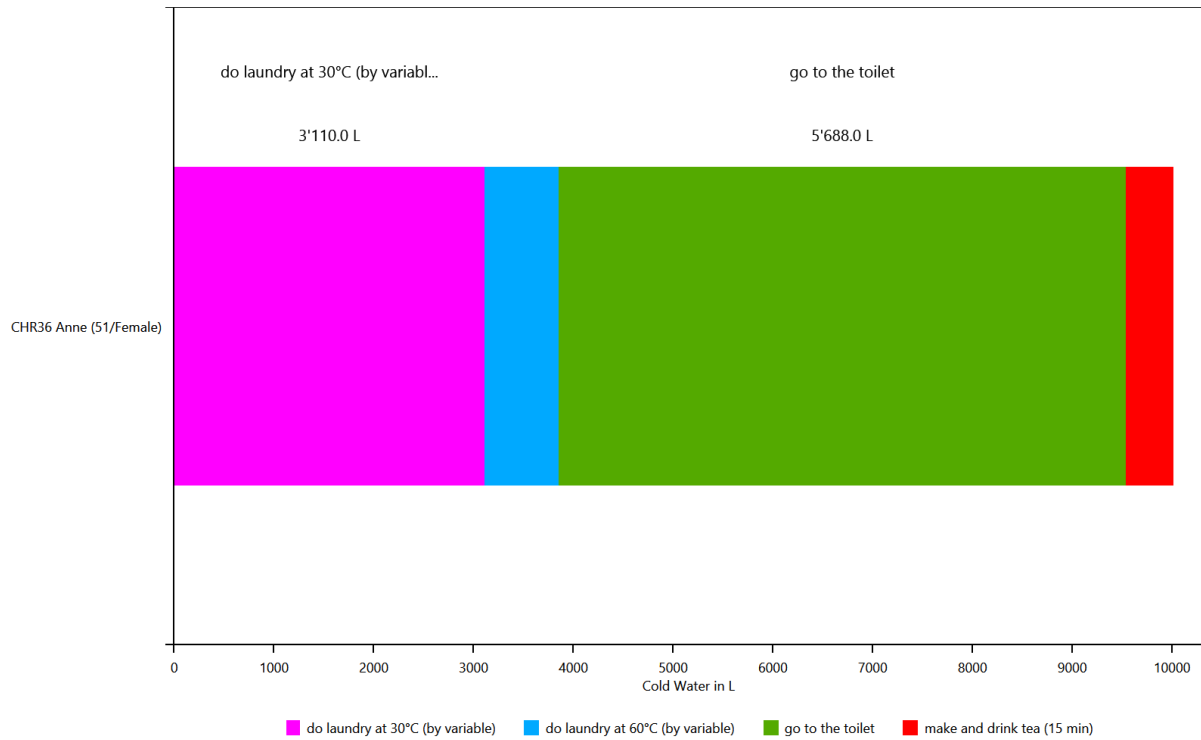


Energy use per person per affordance

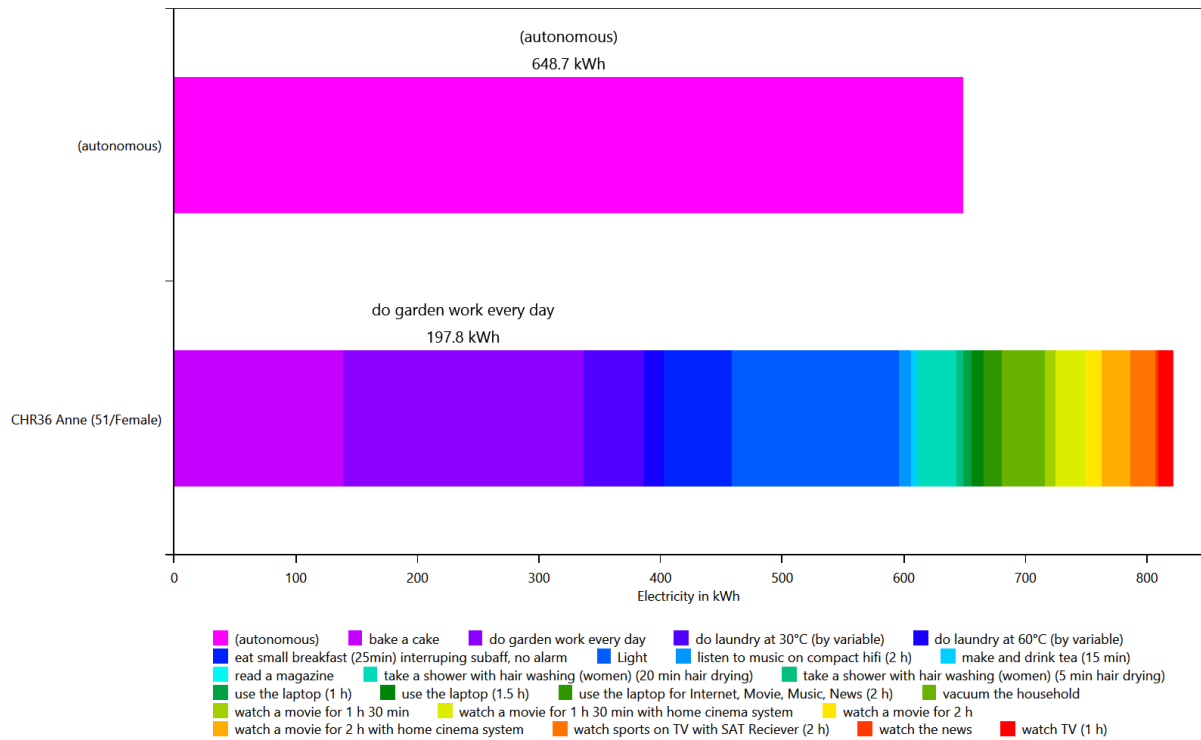
This is made from the files starting with: **AffordanceEnergyUsePerPerson**

This shows the distribution of the energy/ressource use to each affordance by load type and by person. This helps with figuring out if a person is using too much electricity.

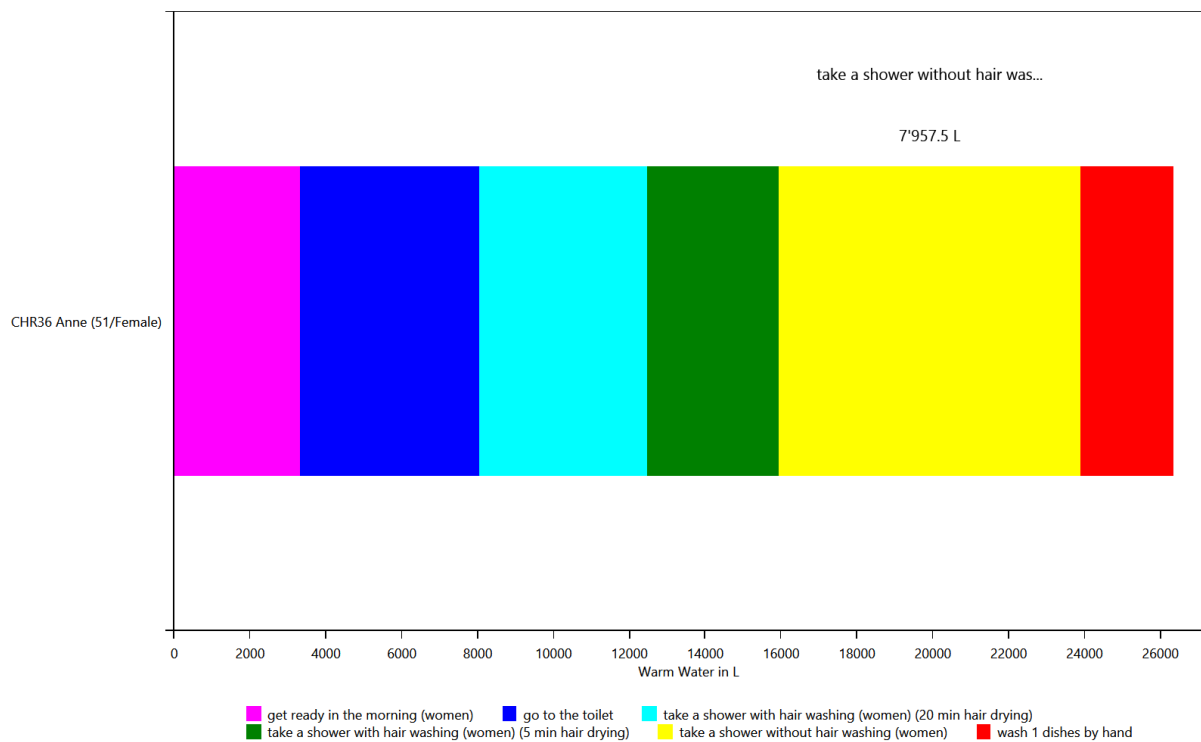
HH0 - Cold Water



HH0 - Electricity



HH0 - Warm Water

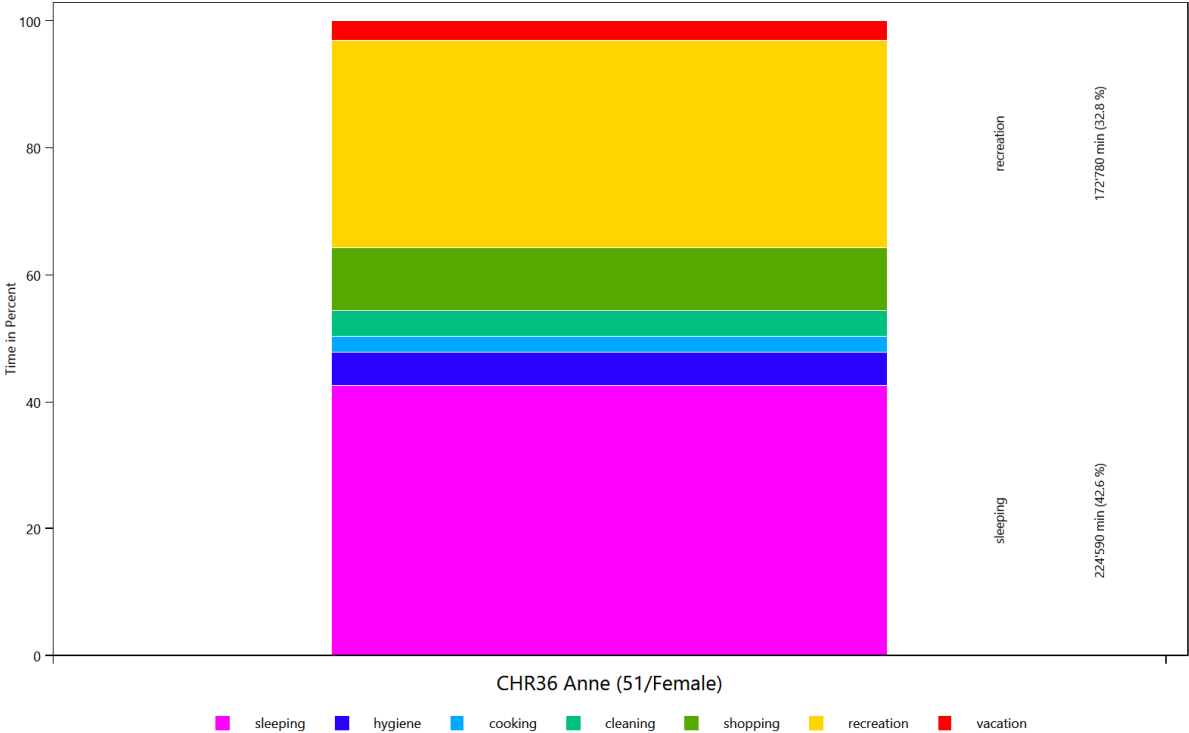


Time Use per Person Per Affordance according to different category definitions

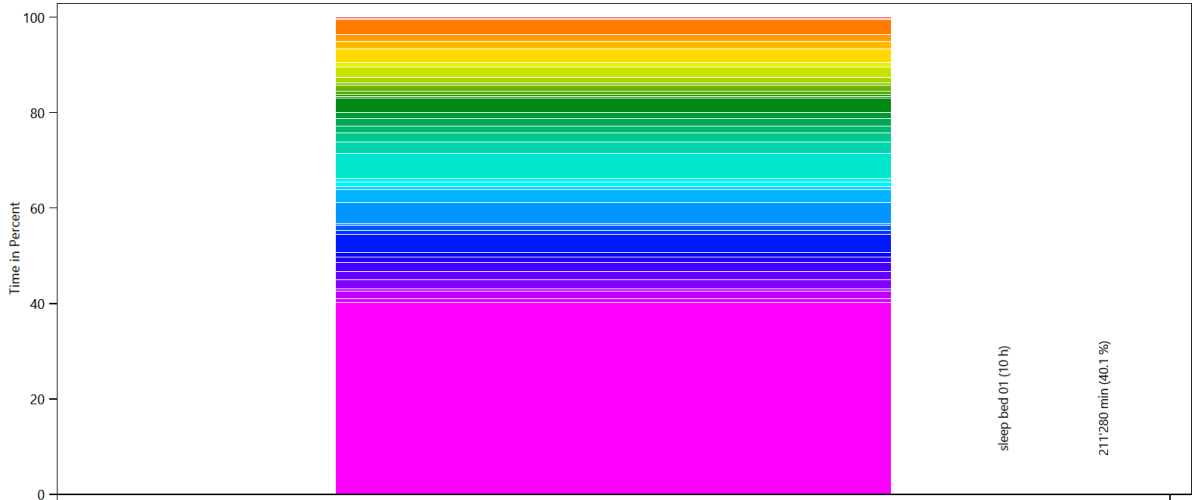
This is made from the files starting with: AffordanceTaggingSet

These charts show how the people in the household use their time. To help with analysis, the activities can be grouped by various criteria. This is done with the affordance tagging sets in the LPG.

Basic Tagging - HH0



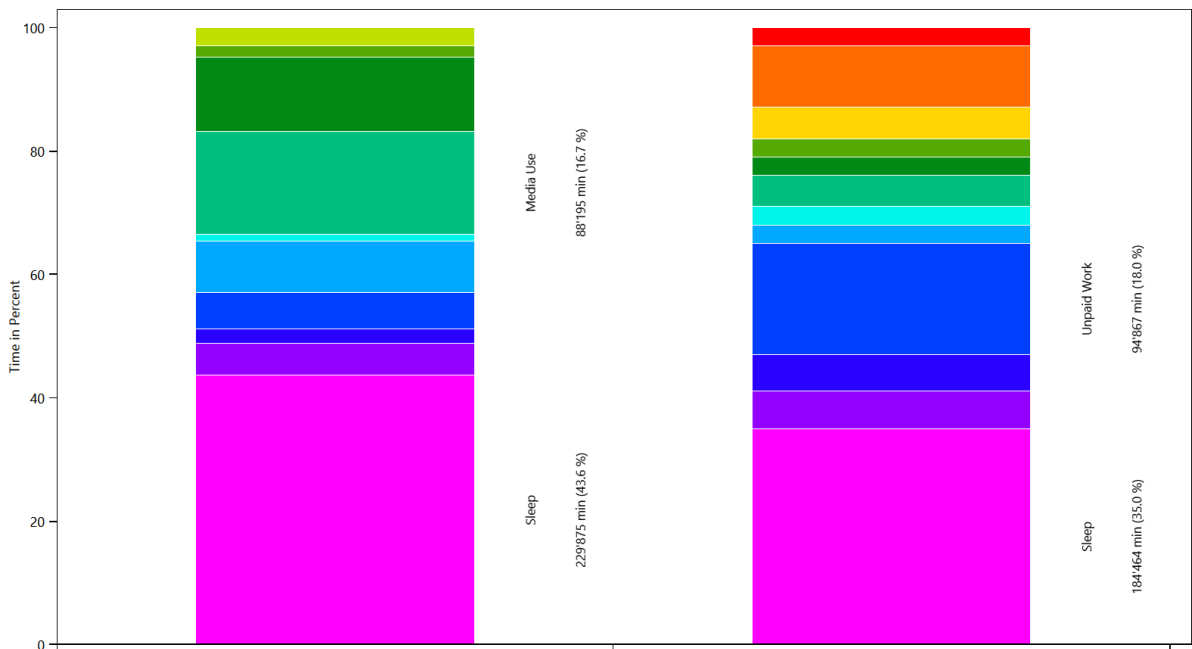
Tagging Set For Planning - HH0



CHR36 Anne (51/Female)

- sleep bed 01 (10 h)
- get ready in the morning (women)
- eat small breakfast (25min) interrupting subaff, no alarm
- go to the toilet
- wash 1 dishes by hand
- go shopping for food in the supermarket (1.5 h)
- take a shower without hair washing (women)
- clean the bath
- rest for 10 min
- go shopping (4 h)
- bake a cake
- play a puzzle game
- watch the news
- read a book on the couch all the time
- use the laptop (1.5 h)
- watch a movie for 1 h 30 min
- take a shower with hair washing (women) (20 min hair drying)
- paint a picture
- read a book on the couch only 9:00 to 22:00
- take nap on the weekend (2 h)
- watch a movie for 2 h with home cinema system
- use the laptop (1 h)
- watch sports on TV with SAT Receiver (2 h)
- watch TV (1 h)
- use the laptop for Internet, Movie, Music, News (2 h)
- do laundry at 30°C (by variable)
- hang up laundry outside
- take a shower with hair washing (women) (5 min hair drying)
- listen to music on compact hifi (2 h)
- vacuum the household
- watch a movie for 1 h 30 min with home cinema system
- go to a bar (4 h)
- watch a movie for 2 h
- do laundry at 60°C (by variable)
- do garden work every day
- relax in the garden
- relax in the garden 2
- vacation
- make and drink tea (15 min)
- read a newspaper for 30min
- read a magazine
- take a nap

Wo bleibt die Zeit - HH0



CHR36 Anne (51/Female)

Reference

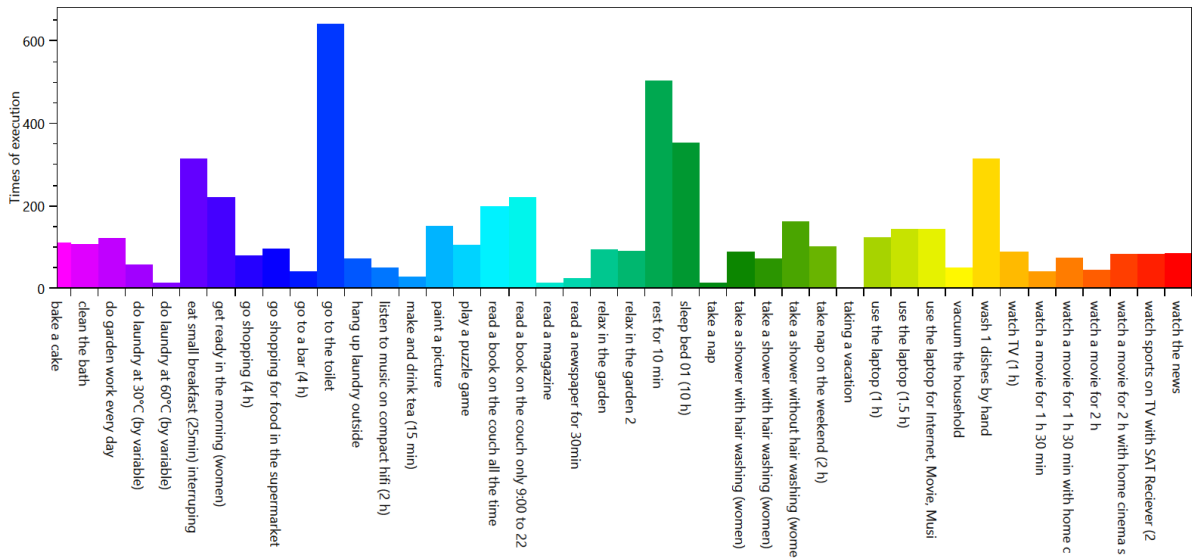
- Sleep
- Hygiene
- Food
- Unpaid Work
- Entertainment
- Games
- Media Use
- Hobby
- Events
- vacation
- Sport
- Work / School
- Contacts

Overview of the actions of each member of the household

This is made from the files starting with: ExecutedActionsOverviewCount

These charts show how often each affordance was executed.

HH0 - CHR36 Anne (51 Female)

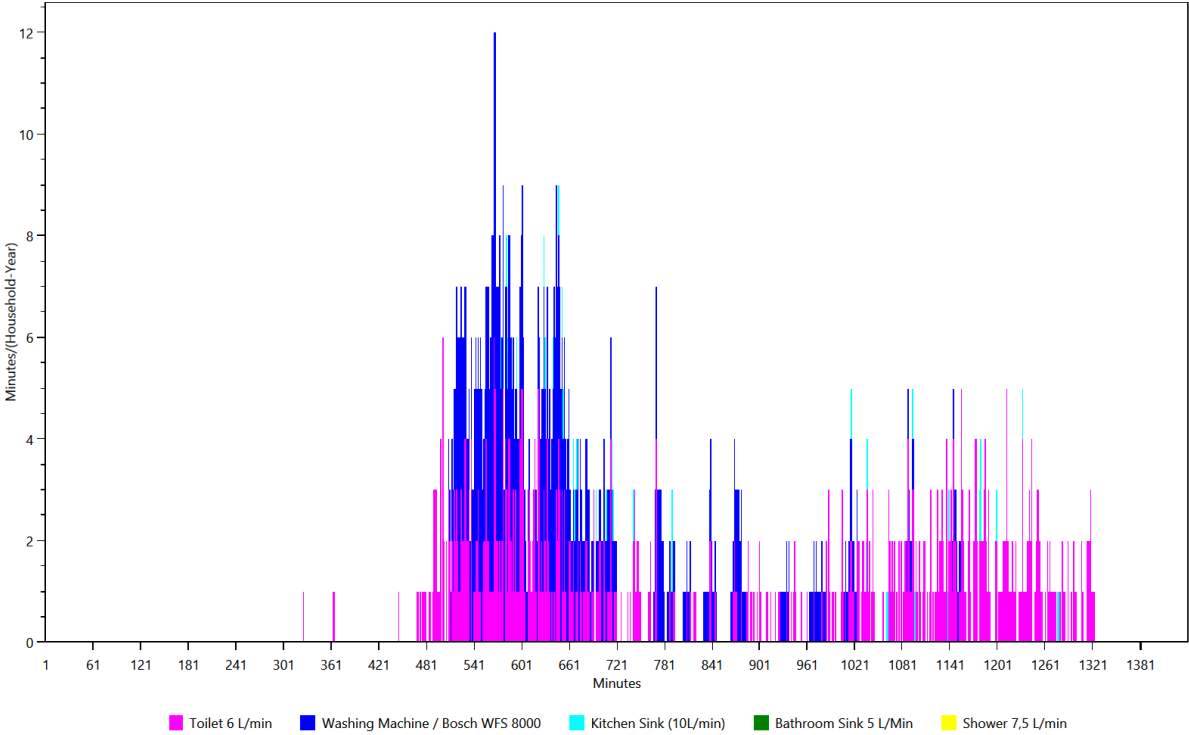


Overview of the time of the use per load type per device

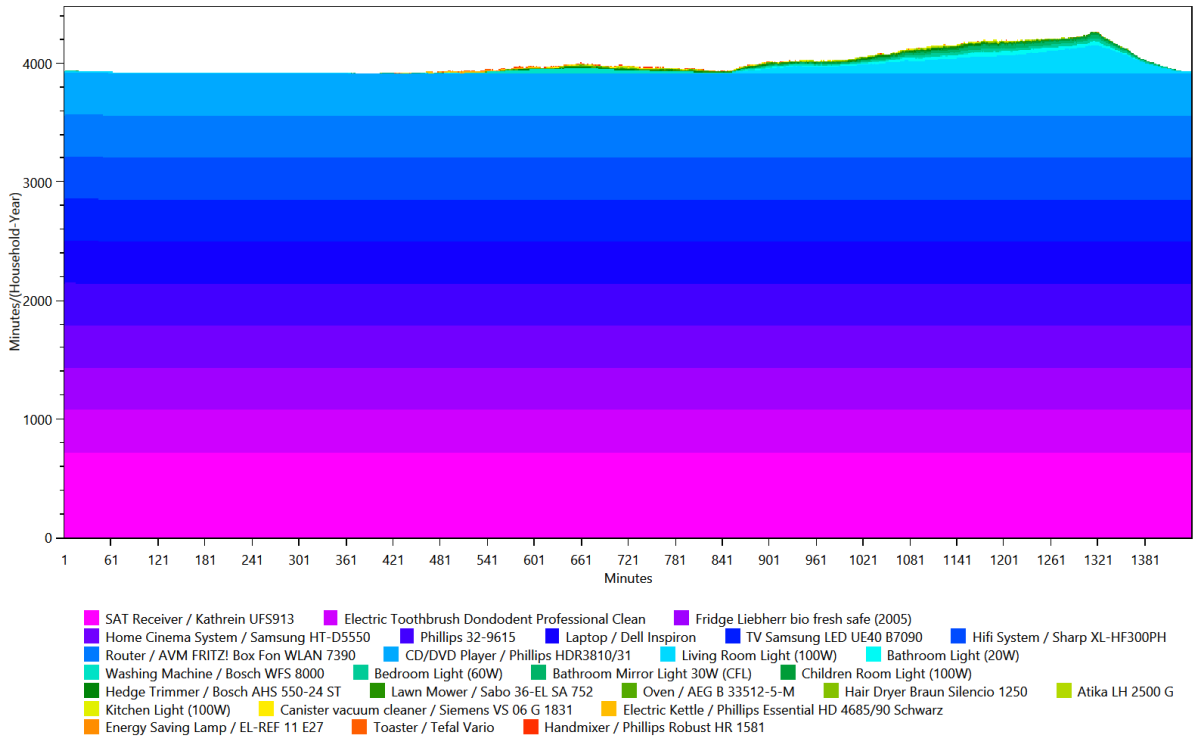
This is made from the files starting with: TimeOfUseEnergyProfiles

The time of use energy profiles shows when each device was used.

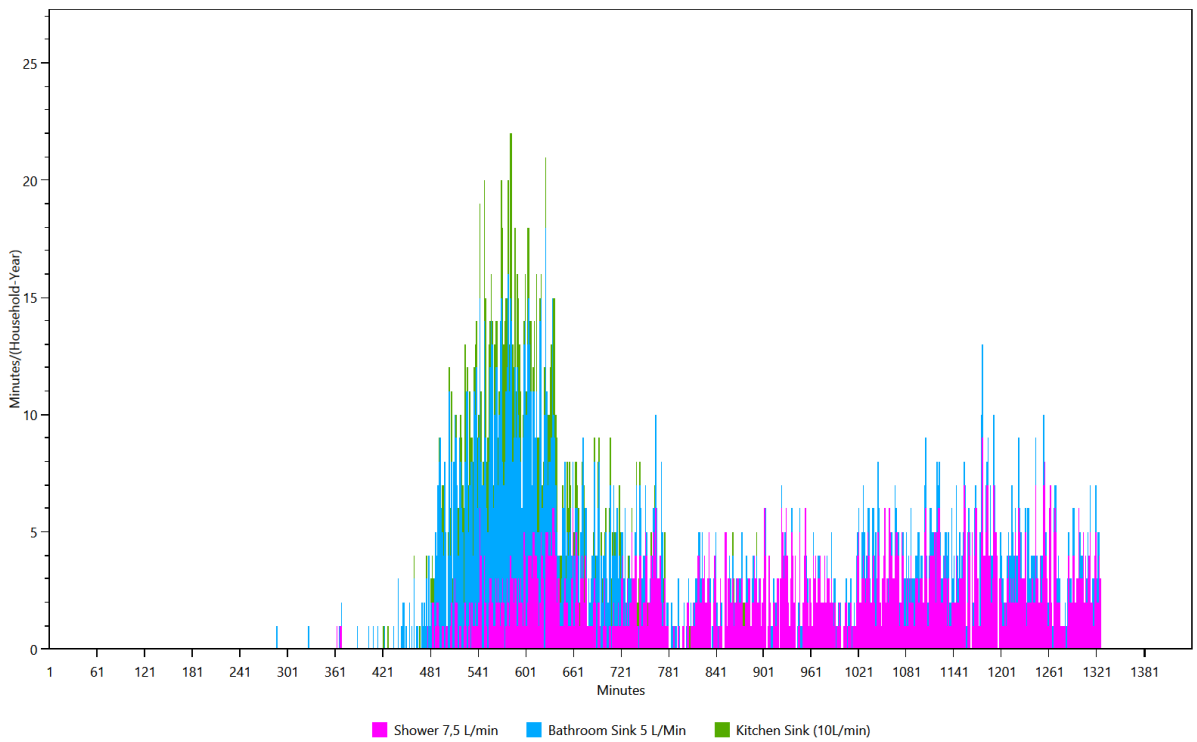
Cold Water



Electricity



Warm Water

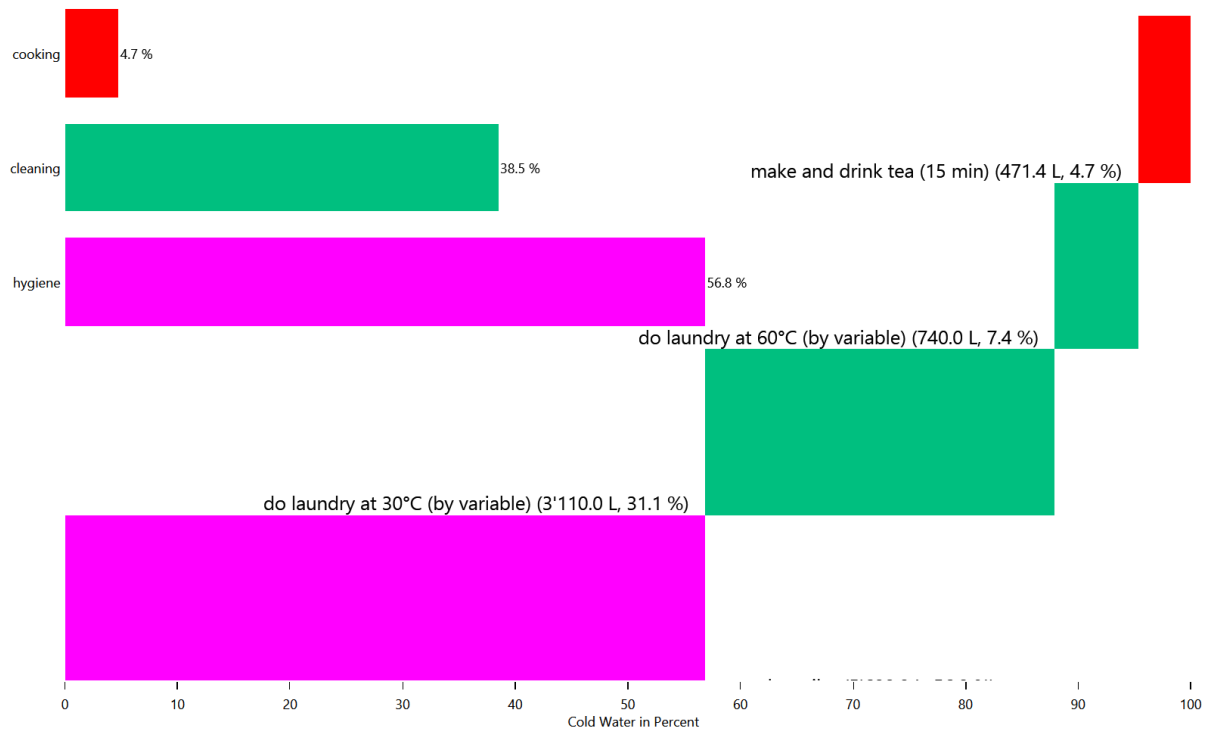


Energy/Resource use distribution per load type per affordance

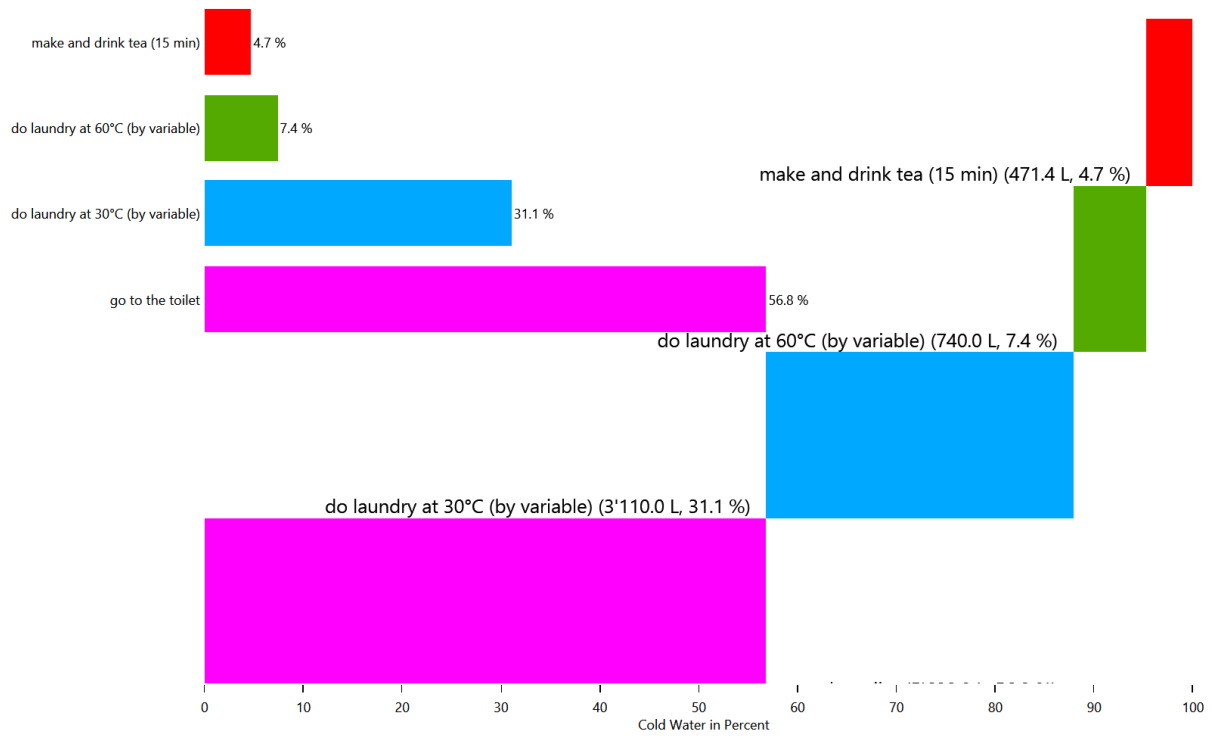
This is made from the files starting with: **AffordanceEnergyUse**

This shows the distribution of the energy/ressource use to each affordance by load type.

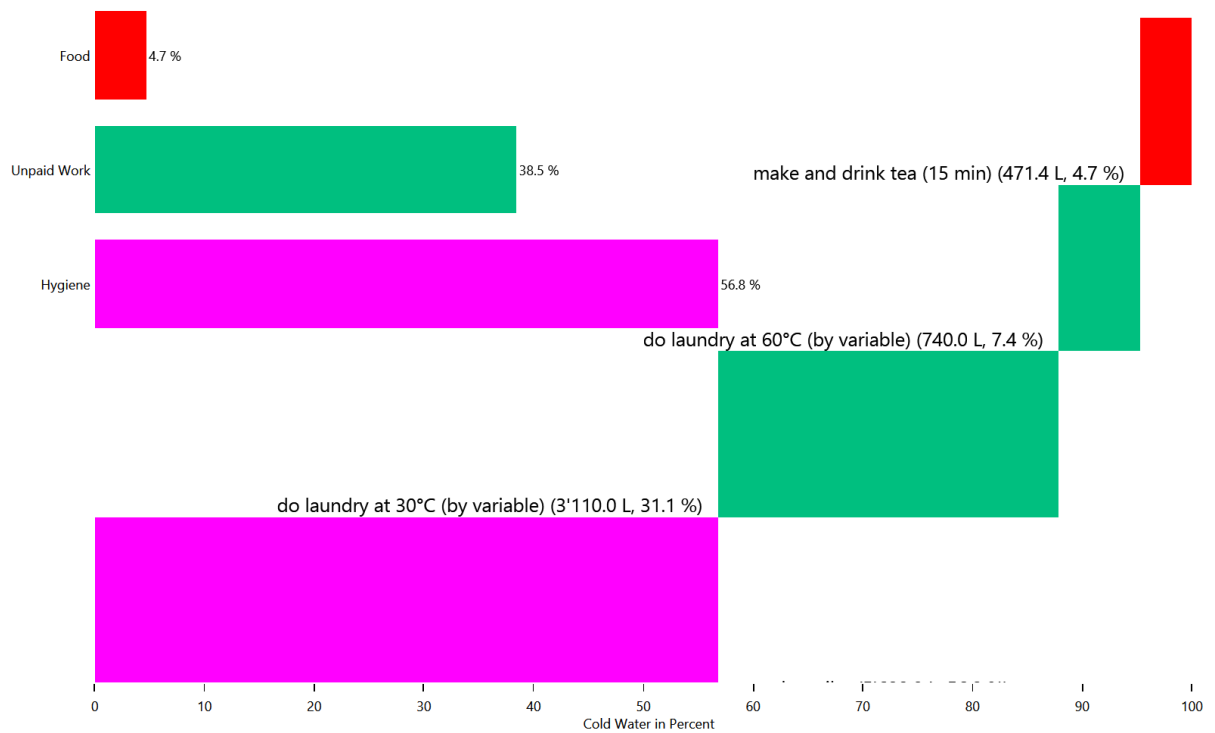
HH0 - Cold Water



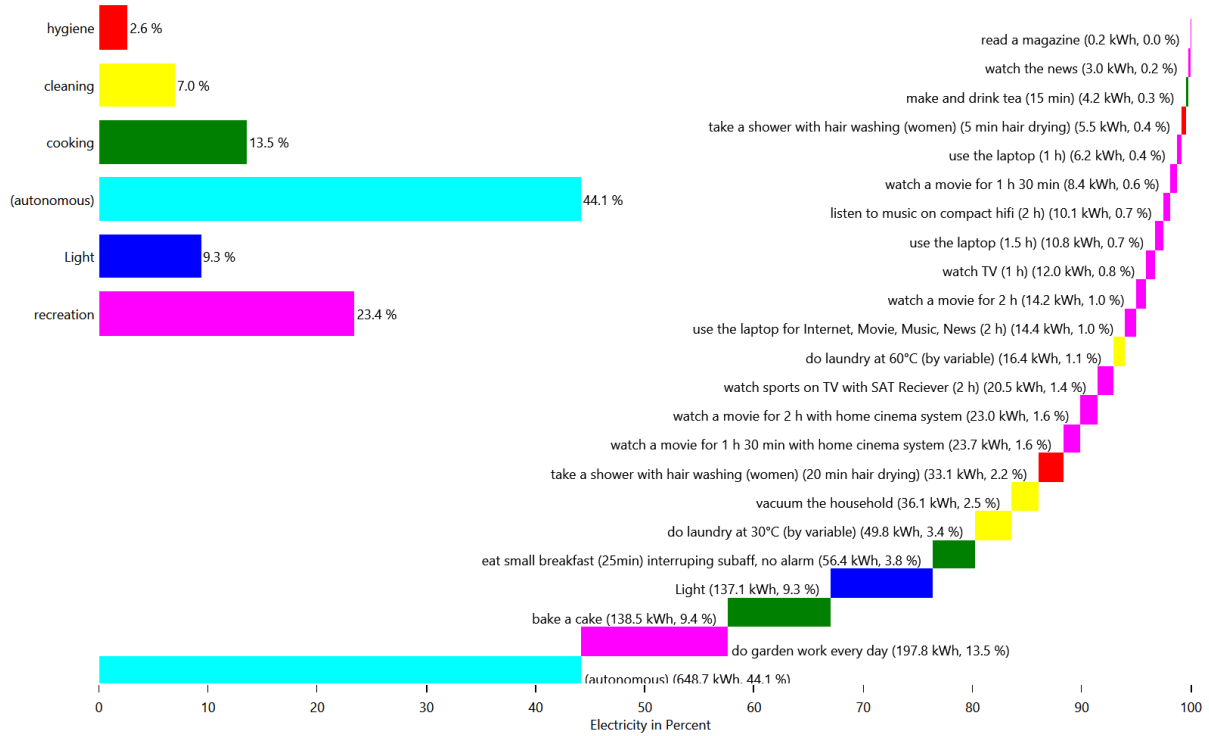
HH0 - Cold Water



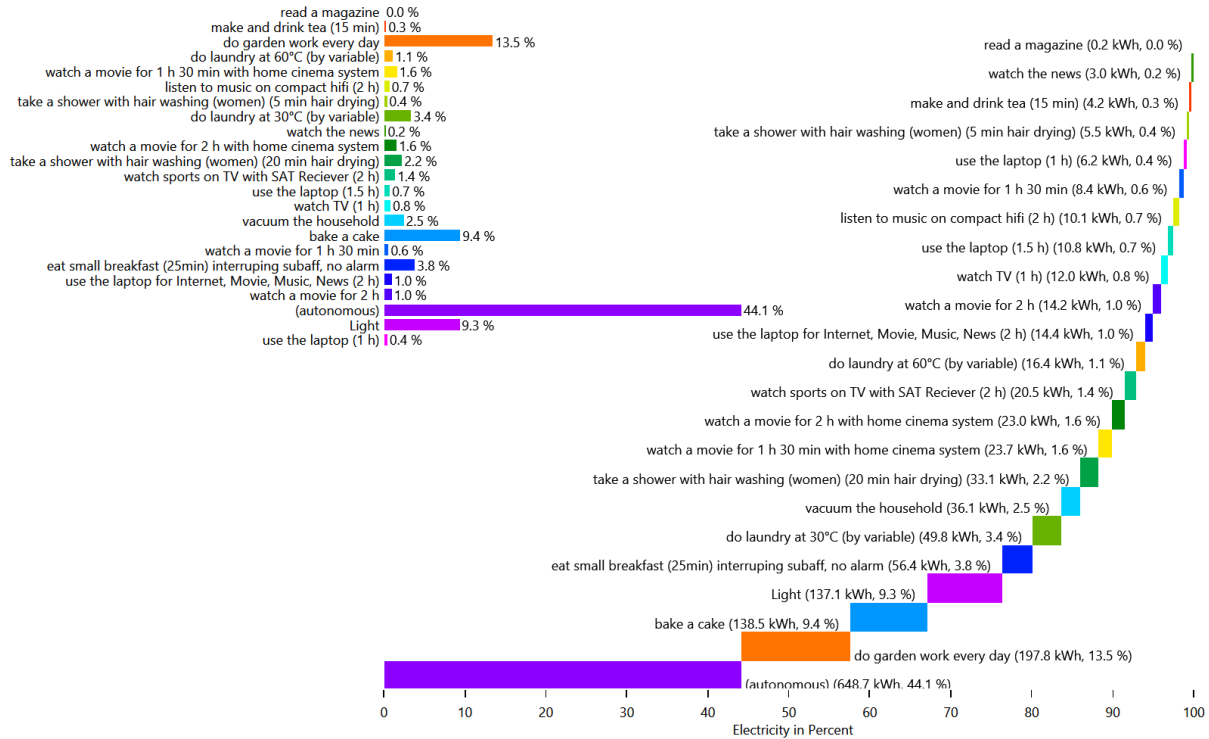
HH0 - Cold Water



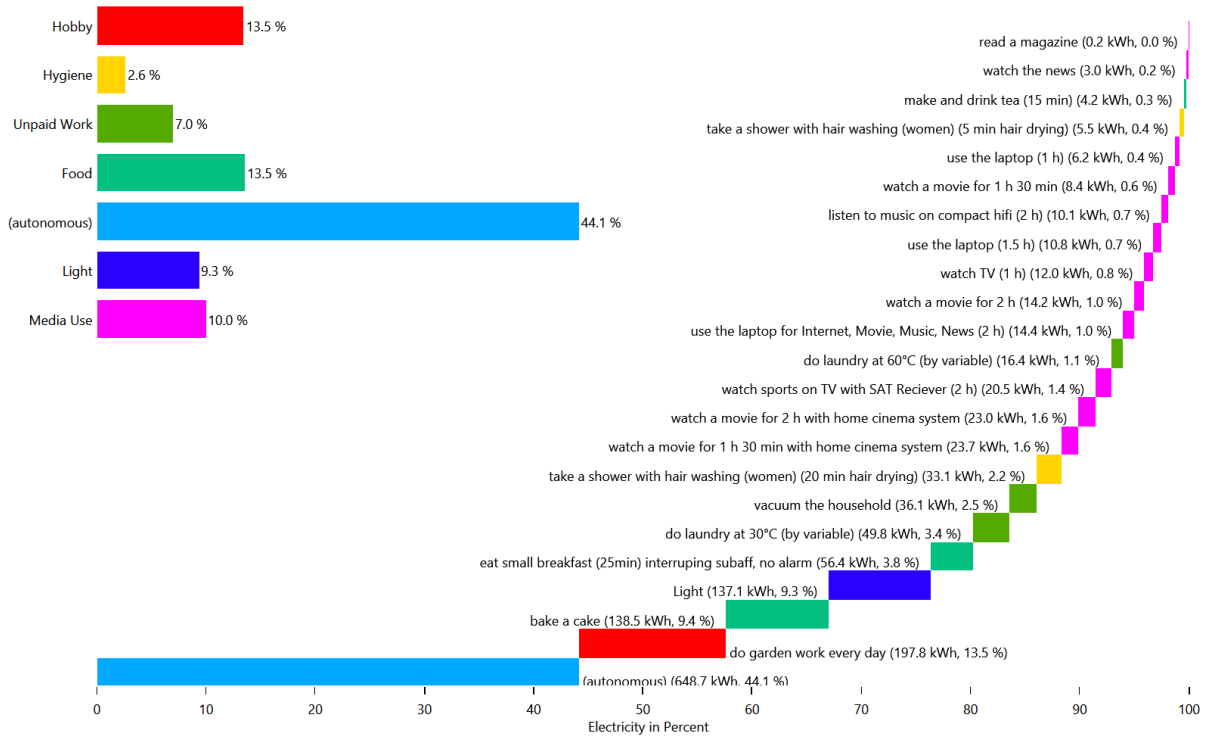
HH0 - Electricity



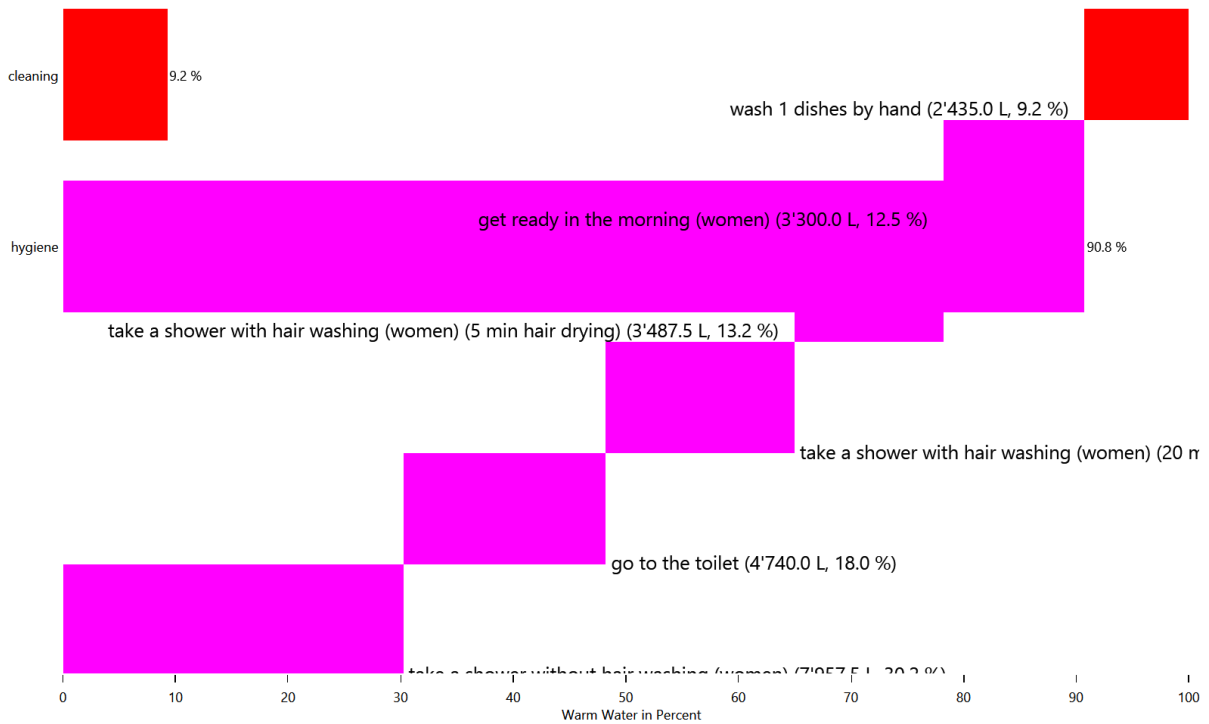
HH0 - Electricity



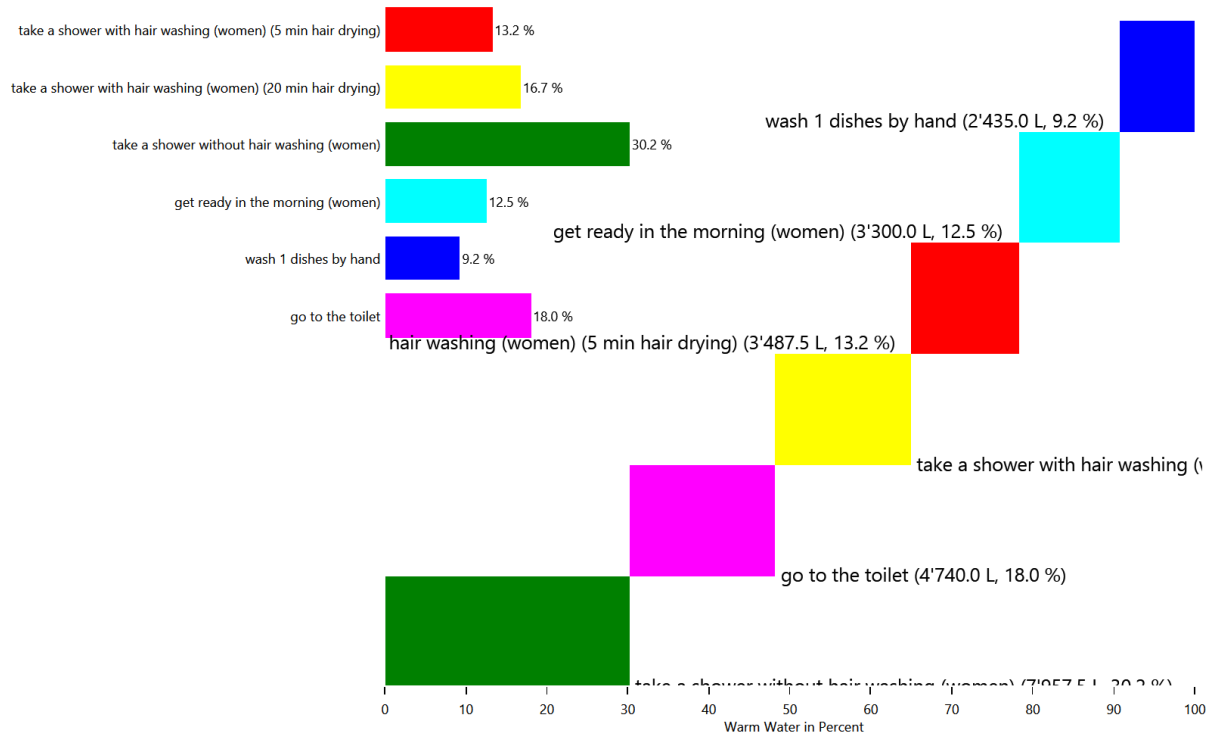
HH0 - Electricity



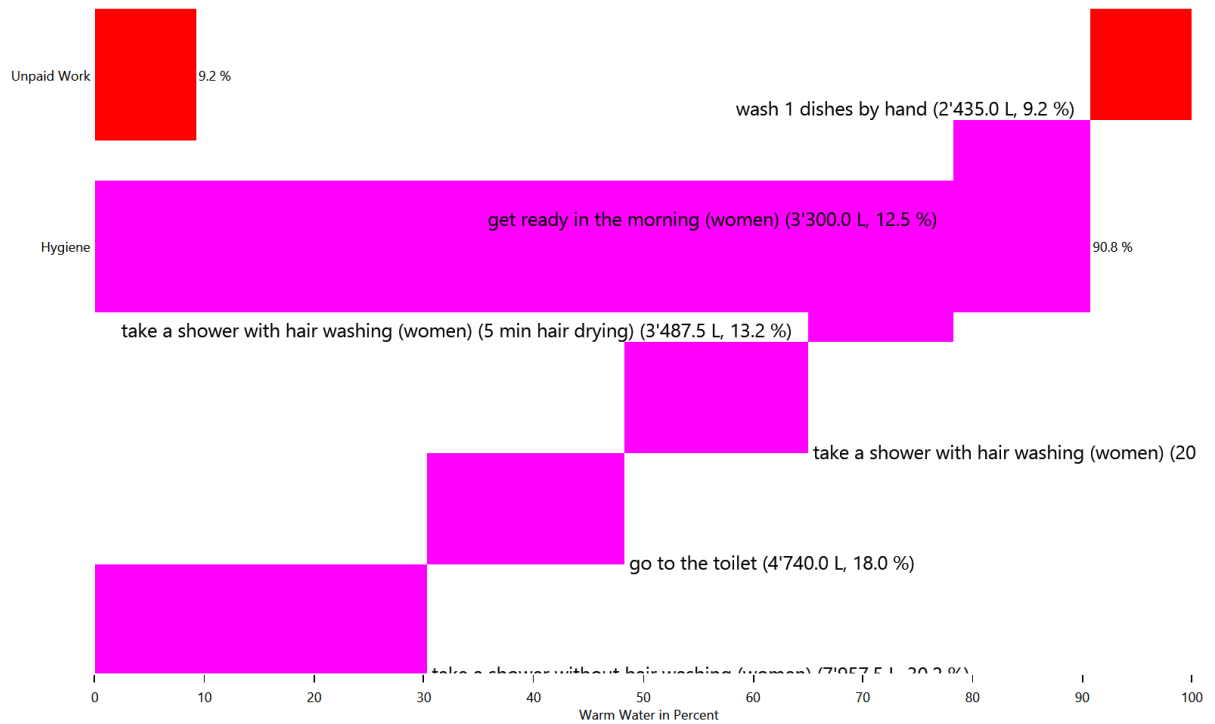
HH0 - Warm Water



HH0 - Warm Water



HH0 - Warm Water

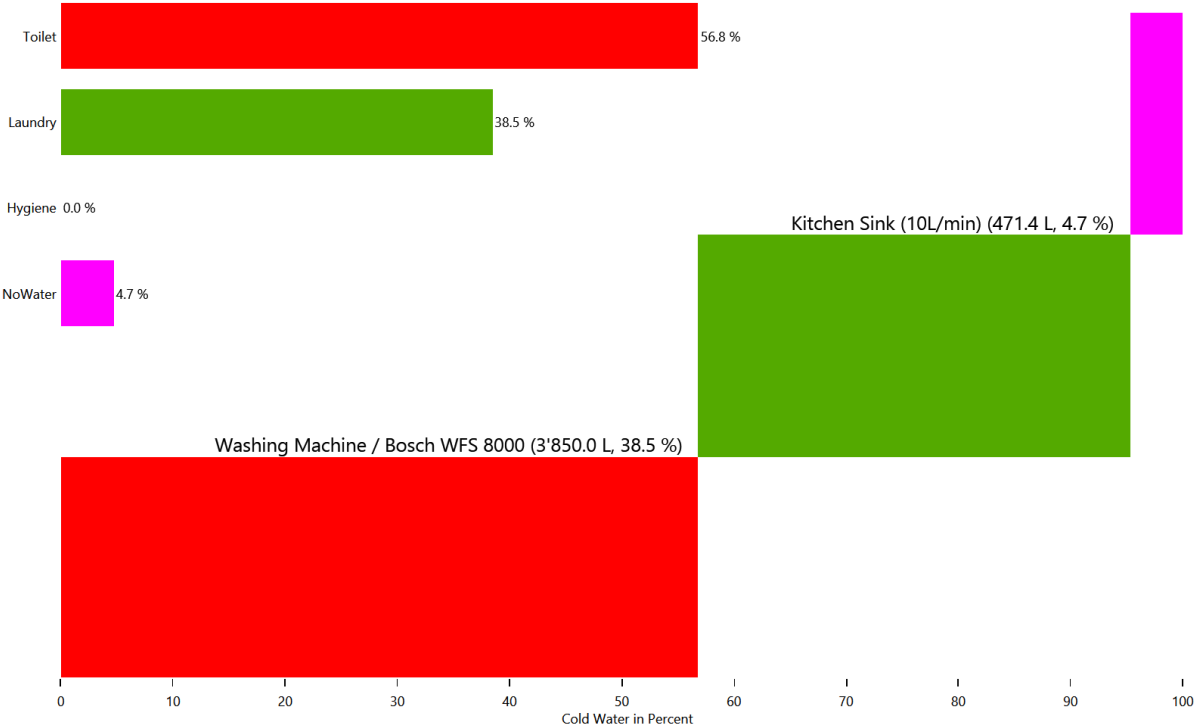


Energy use for each load type for each device

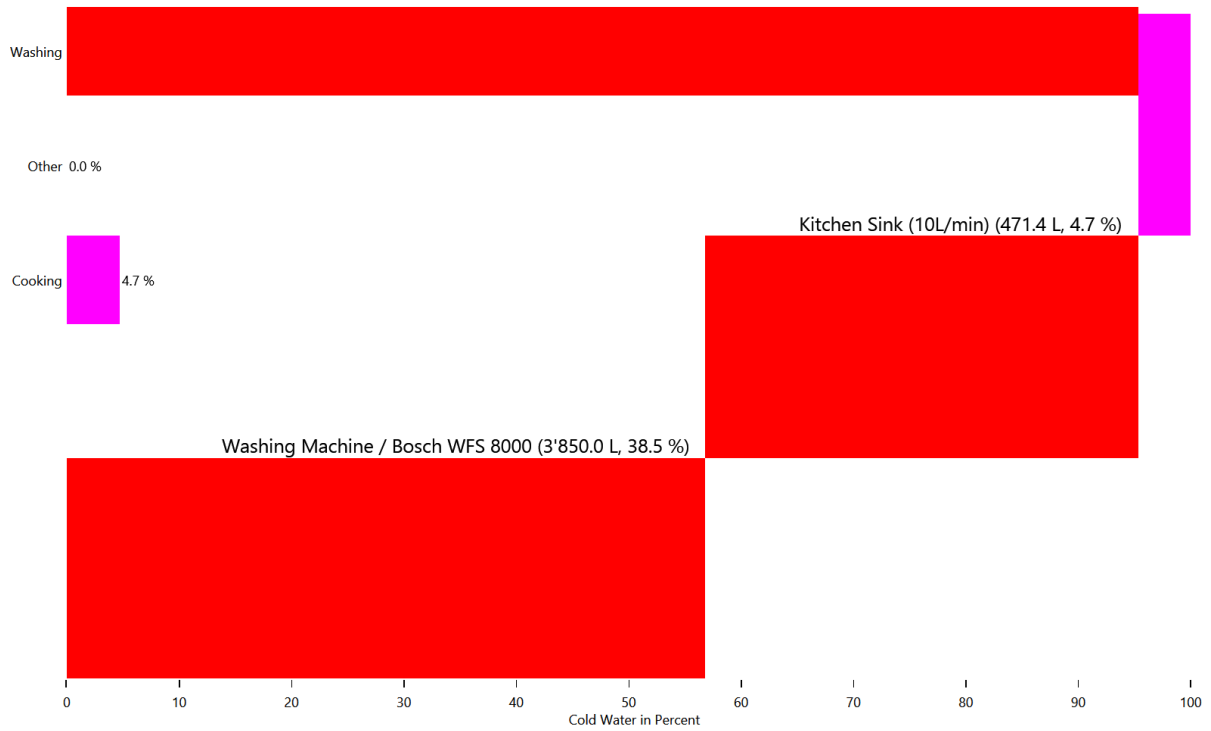
This is made from the files starting with: DeviceSums

These pie charts show the energy use for each individual device in each load type.

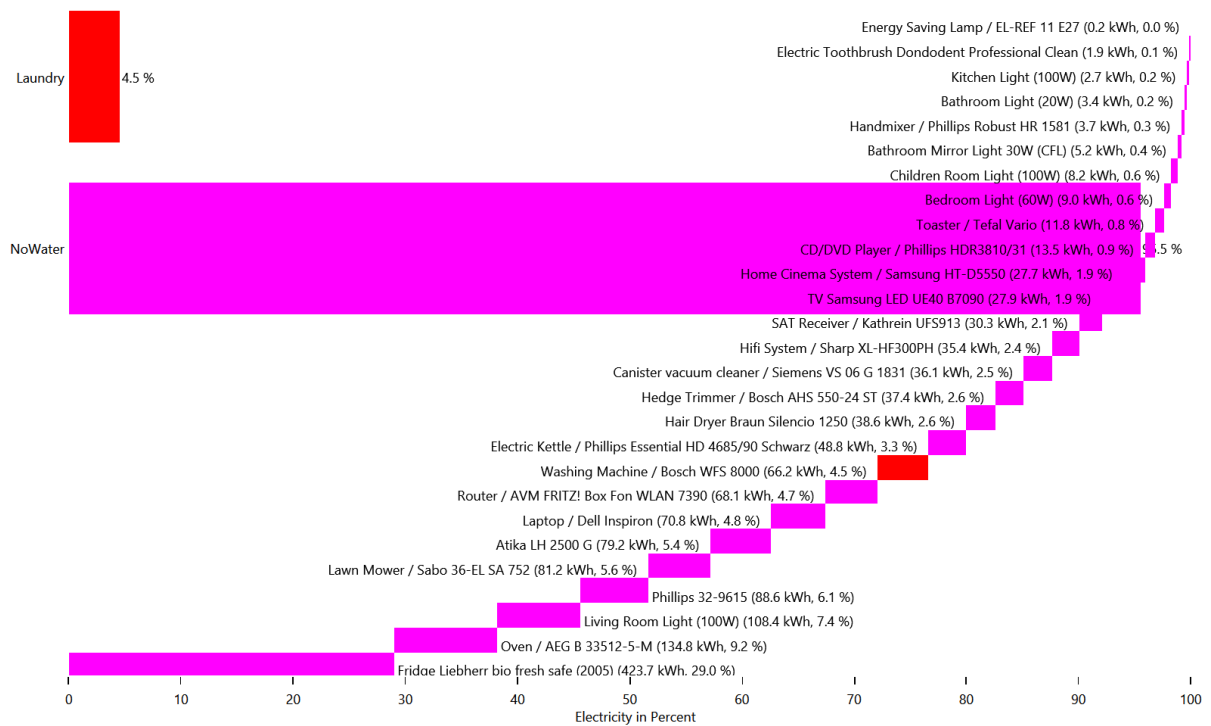
Cold Water



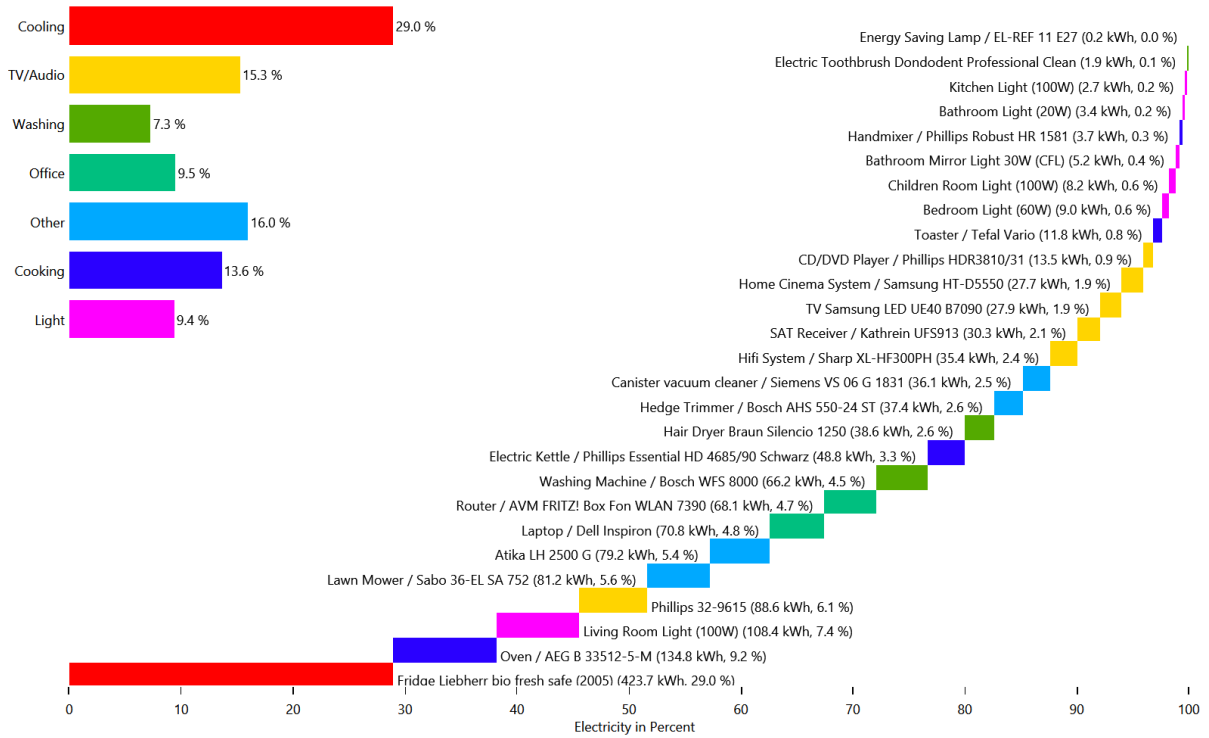
Cold Water



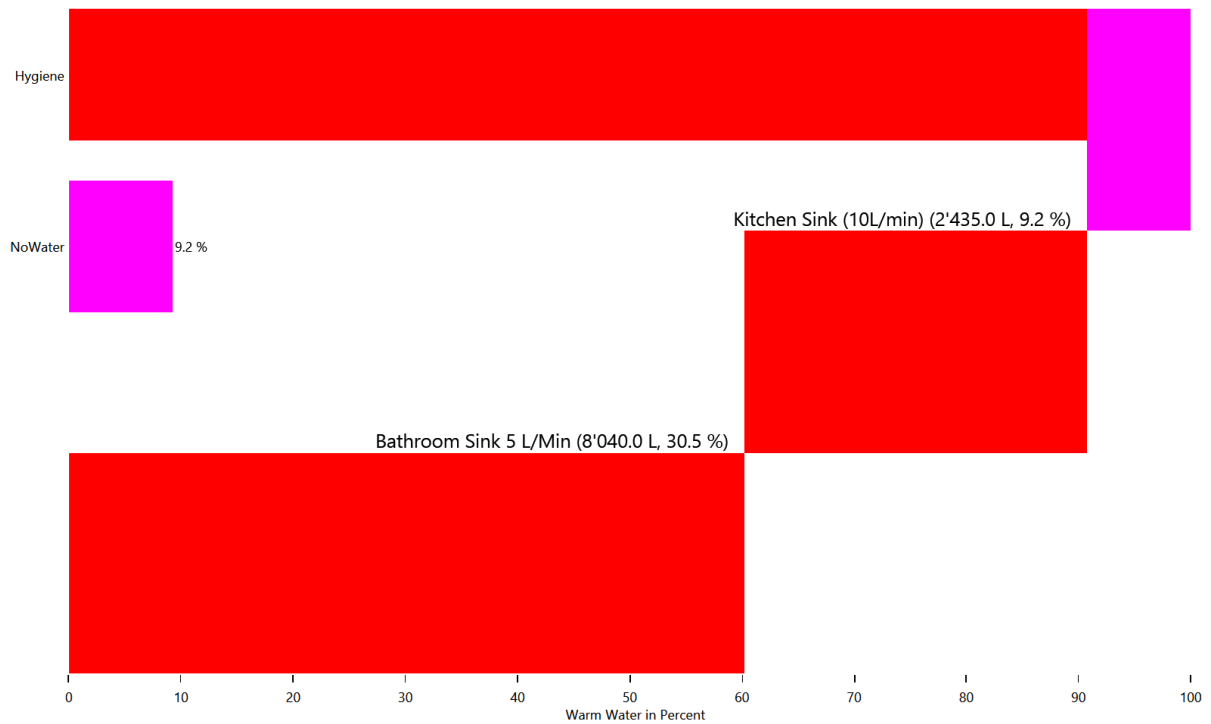
Electricity



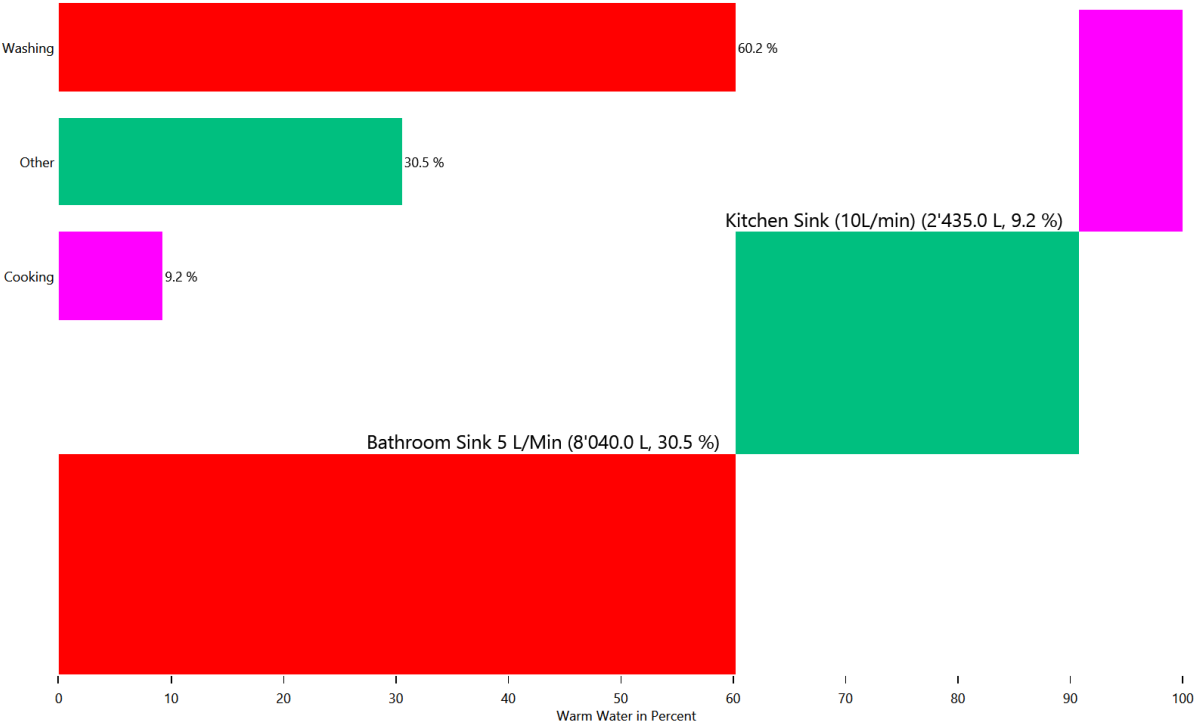
Electricity



Warm Water



Warm Water



0 10 20 30 40 50 60 70 80 90 100
Warm Water in Percent

Washing

60.2 %

Other

30.5 %

Cooking

9.2 %

Kitchen Sink (10L/min) (2'435.0 L, 9.2 %)

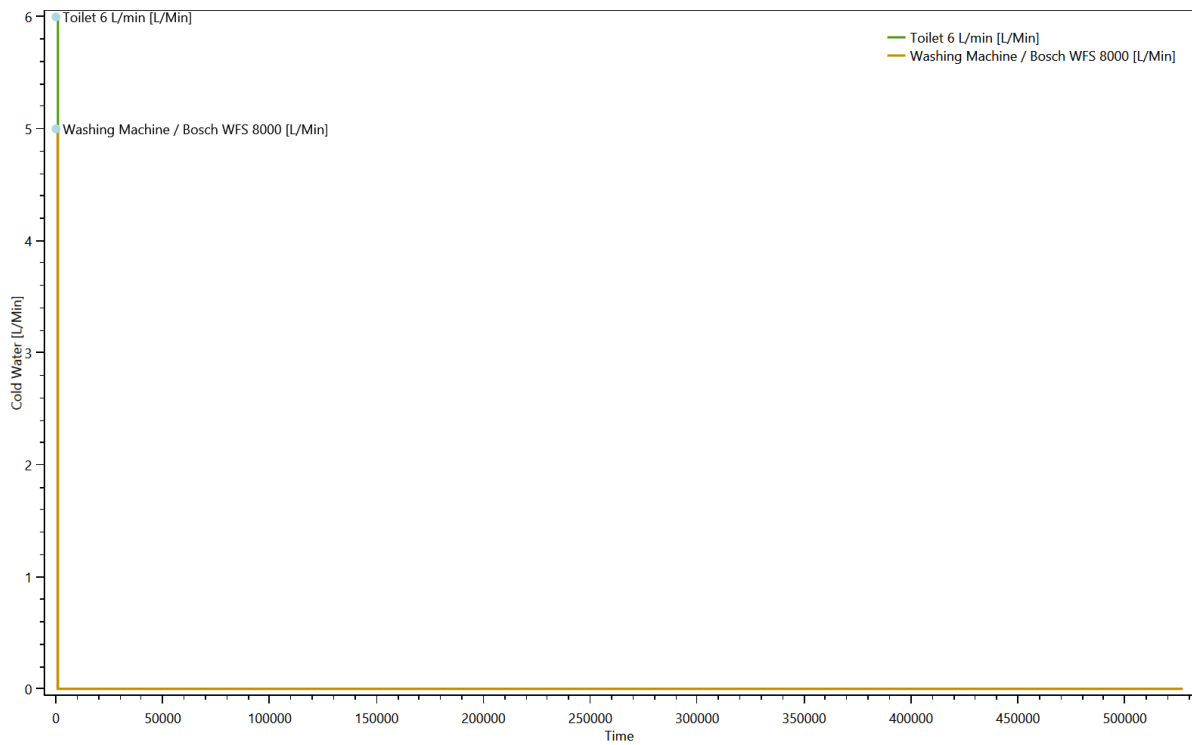
Bathroom Sink 5 L/Min (8'040.0 L, 30.5 %)

Duration curve for each device for each load type

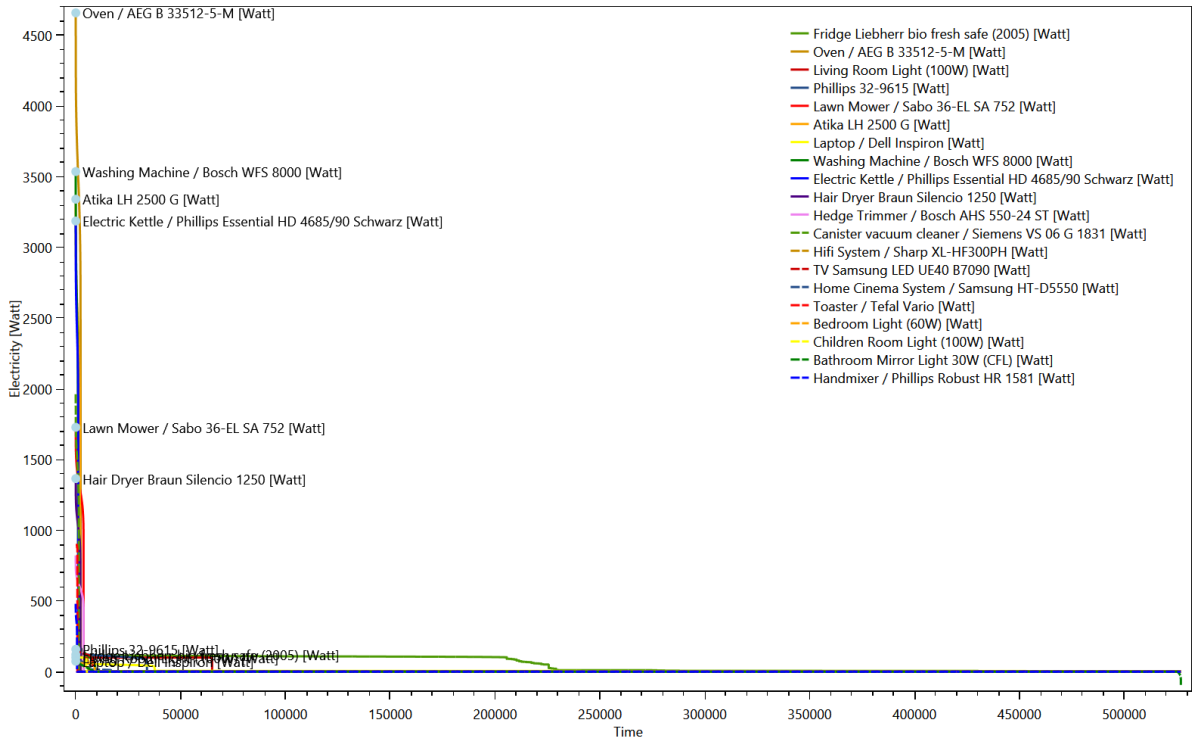
This is made from the files starting with: DeviceDurationCurves

The device duration curve show the duration curve of each device to give an overview of the power consumption.

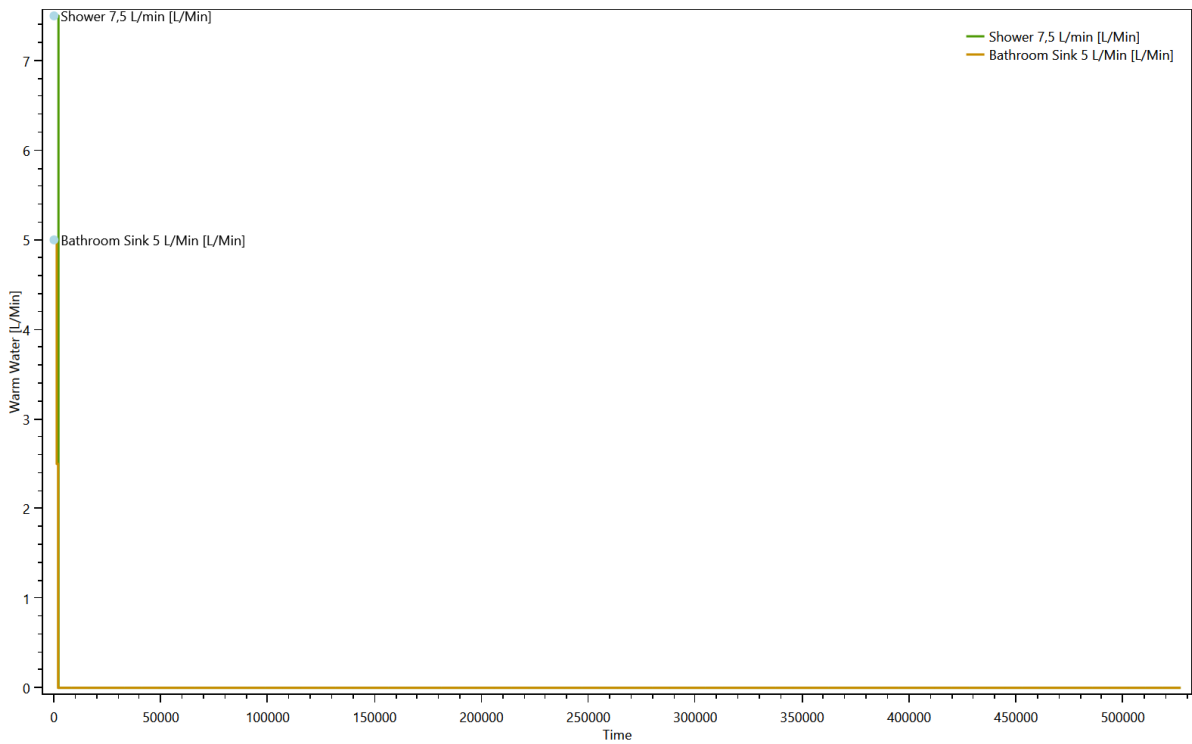
Cold Water



Electricity



Warm Water

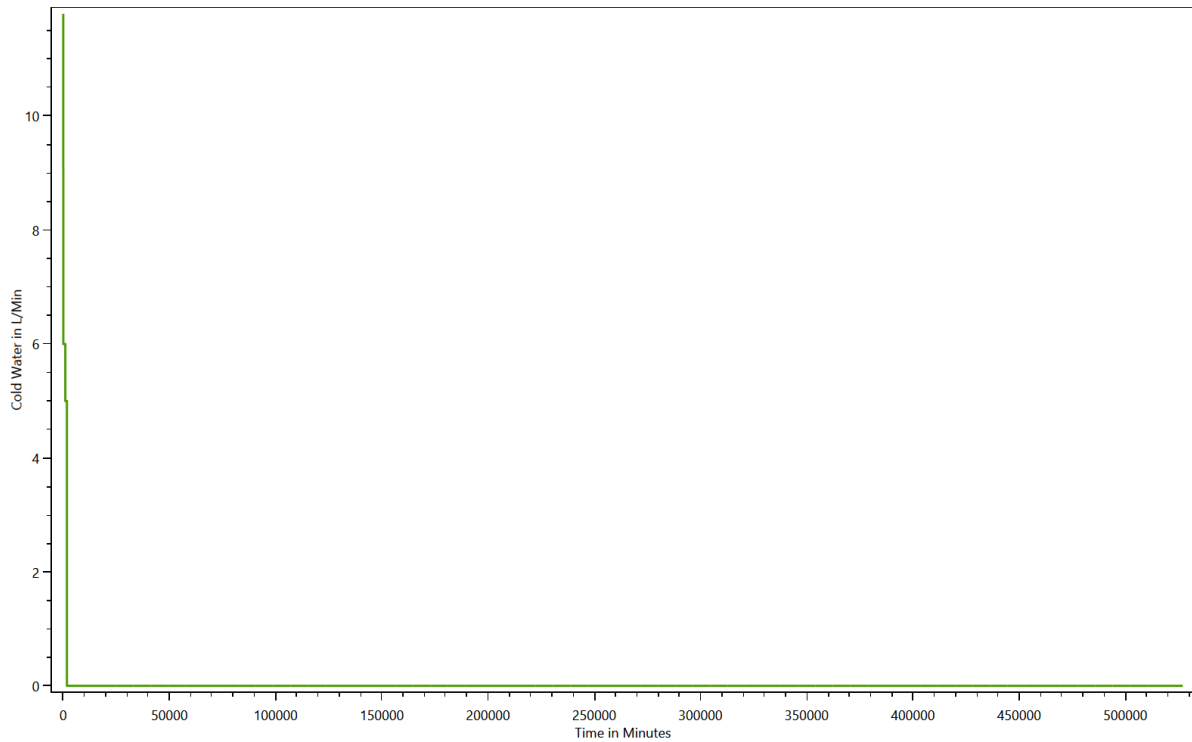


Duration curve for each load type

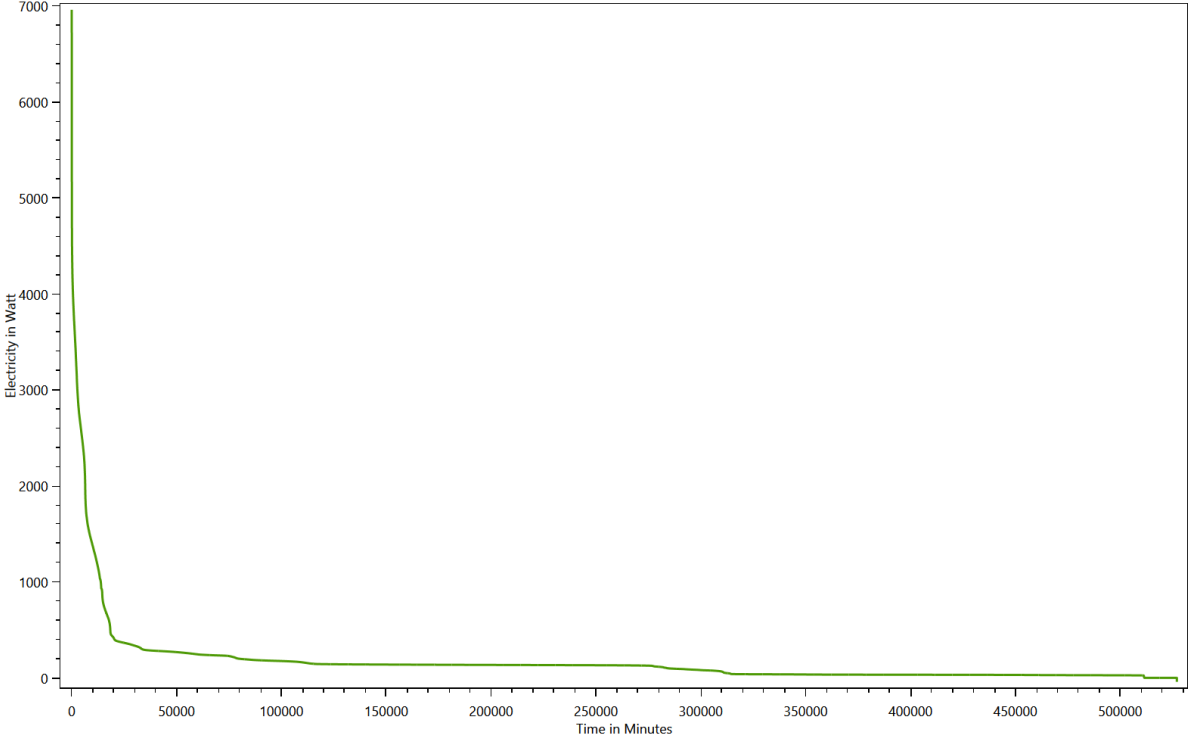
This is made from the files starting with: **DurationCurve**

The duration curve show the duration curve for the entire household to give an overview of the power consumption.

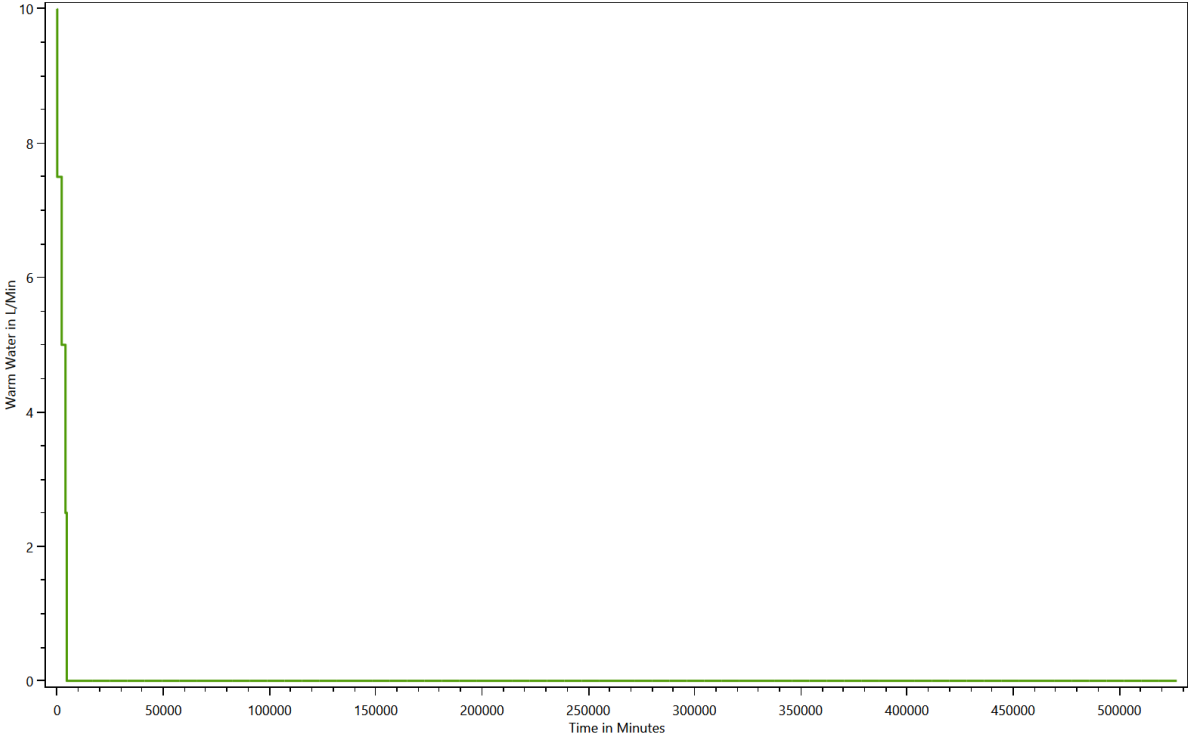
Cold Water



Electricity



Warm Water

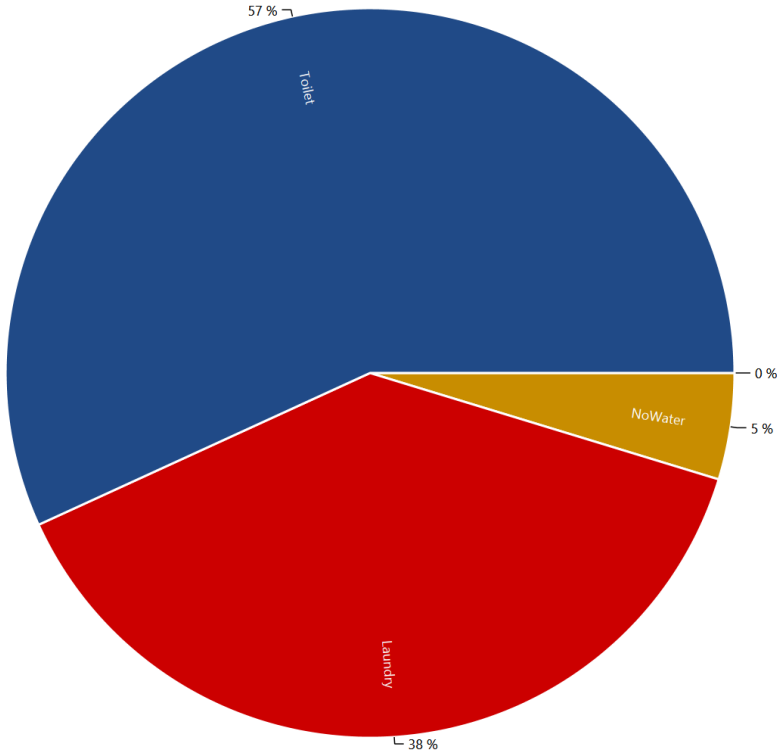


Grouped energy use for each load type for each device

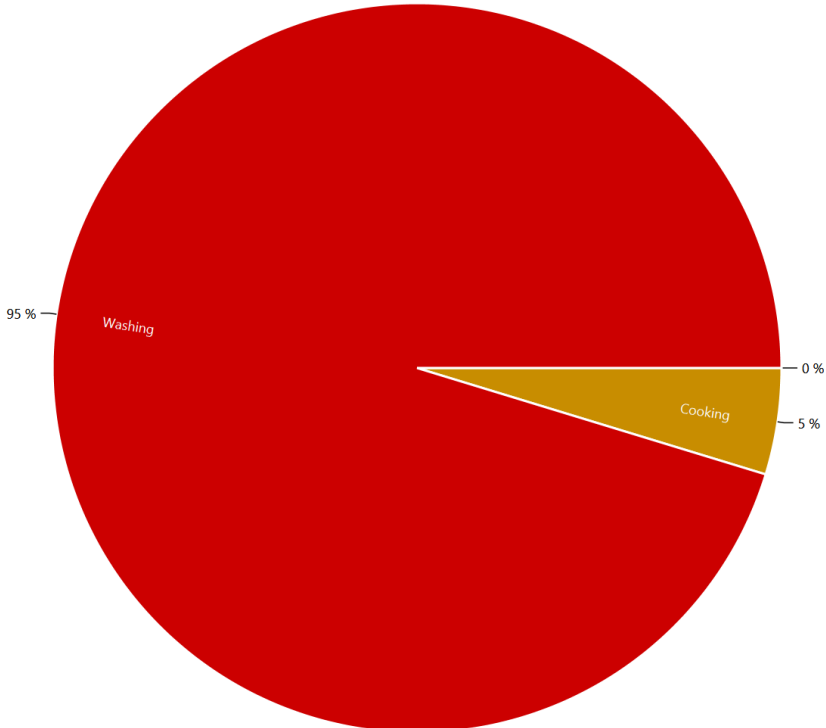
This is made from the files starting with: DeviceTaggingSet

The devices in the LPG can be grouped with various criteria by the device tagging sets. These charts show the results.

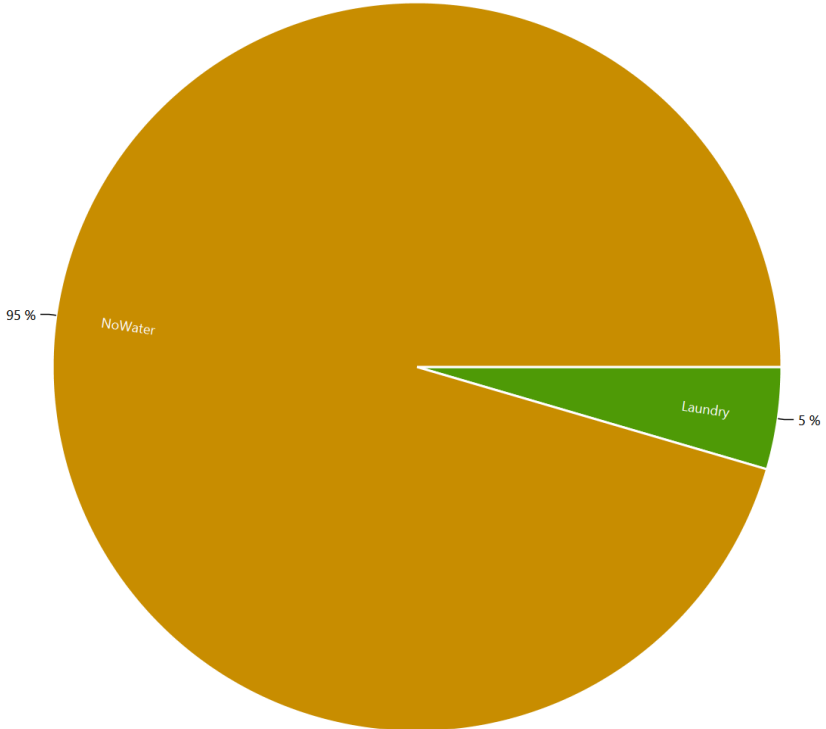
HH0 - Destatis Water Usage Statistics - Cold Water



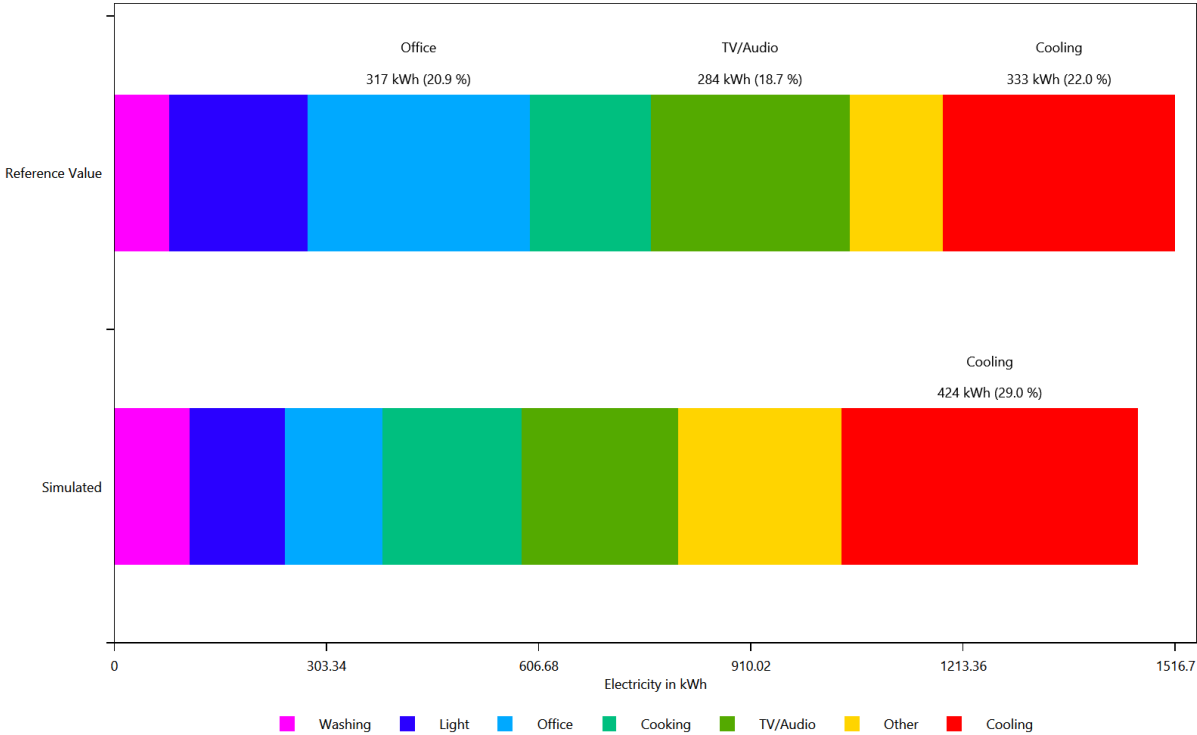
HH0 - Energieagentur - Cold Water



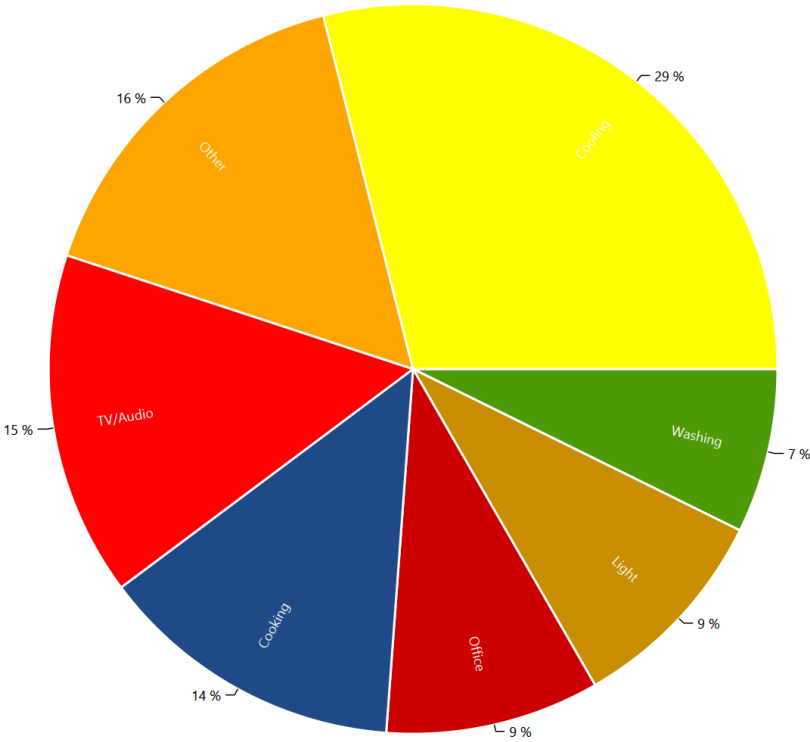
HH0 - Destatis Water Usage Statistics - Electricity



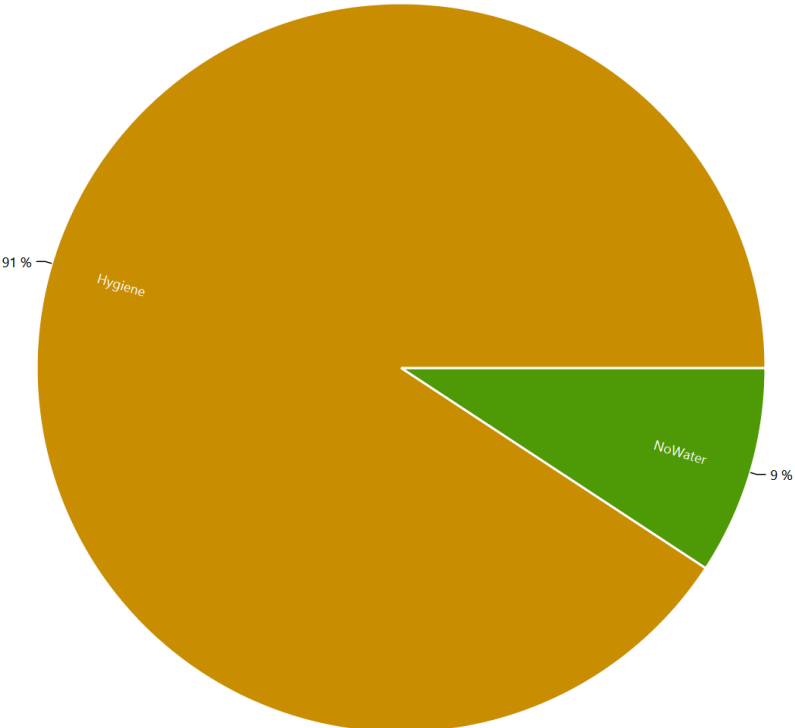
HH0 - Energieagentur - Electricity



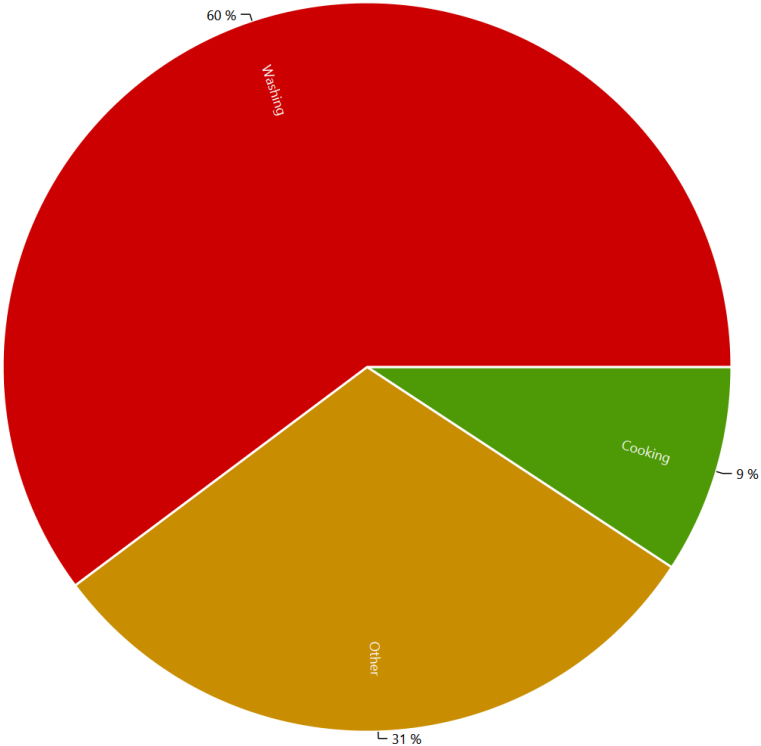
HH0 - Energieagentur - Electricity



HH0 - Destatis Water Usage Statistics - Warm Water



HH0 - Energieagentur - Warm Water

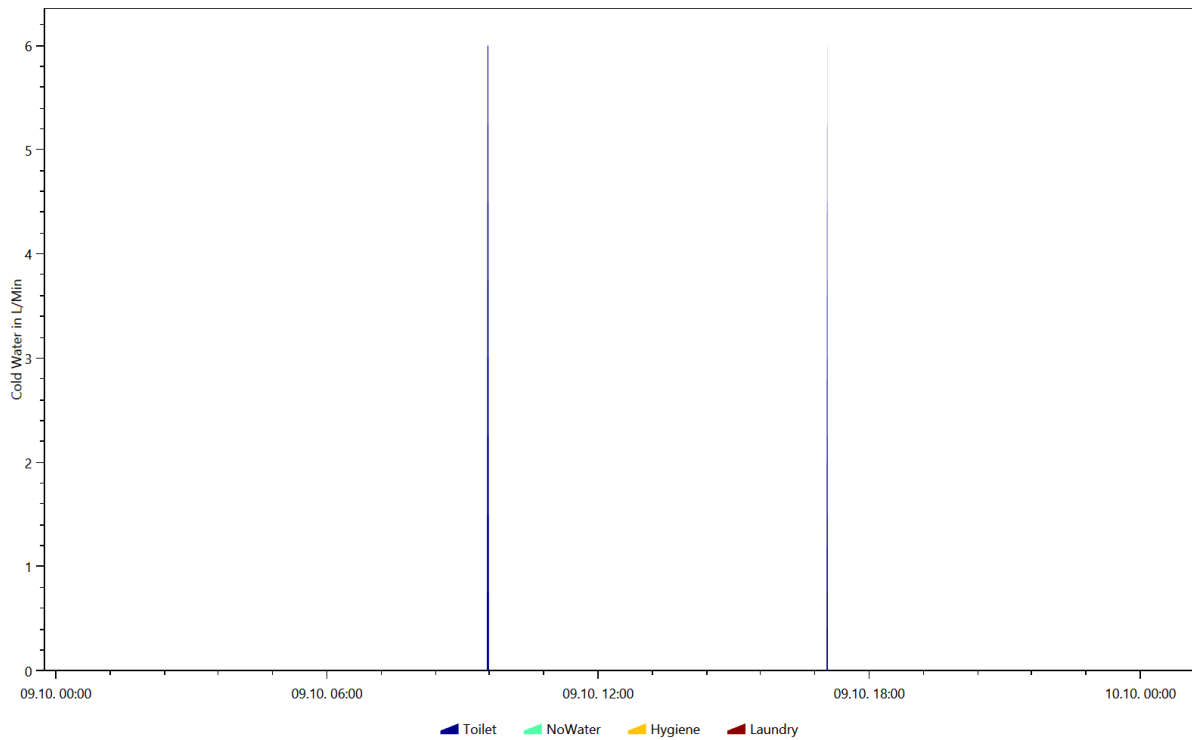


Example of the device profiles for each load type

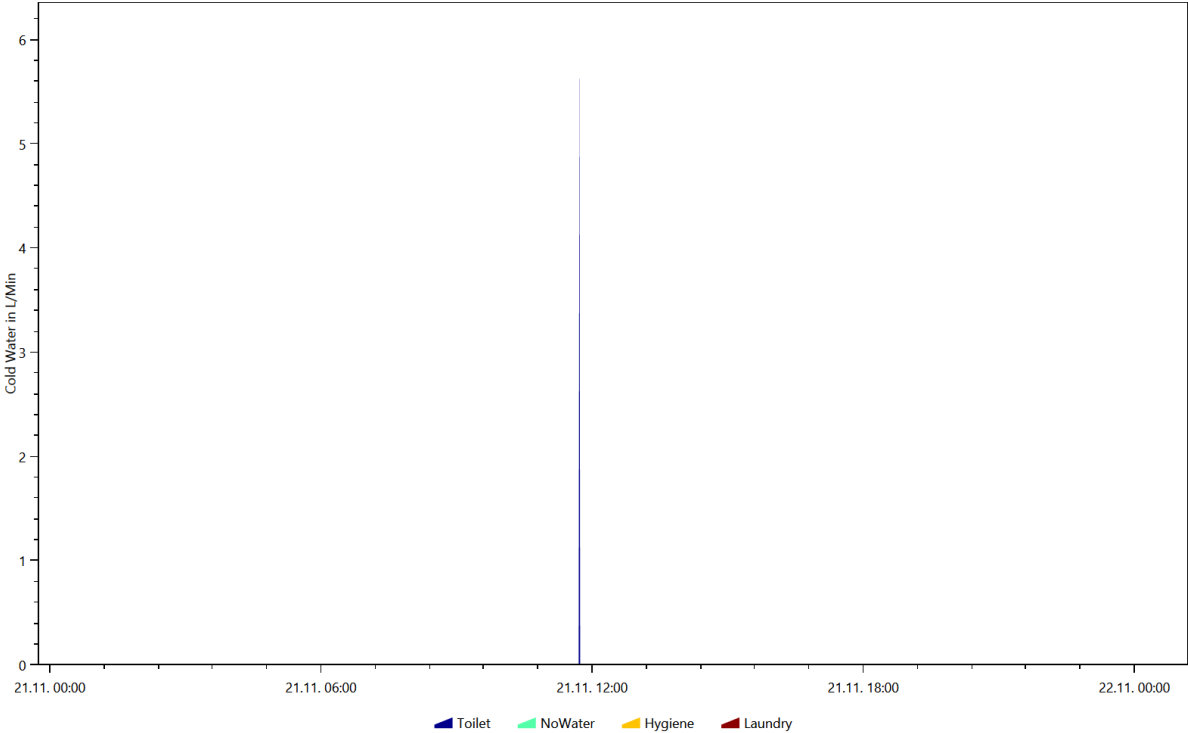
This is made from the files starting with: DeviceProfiles

The device profile files are the reason for the LPG. They show the power consumption of each device.

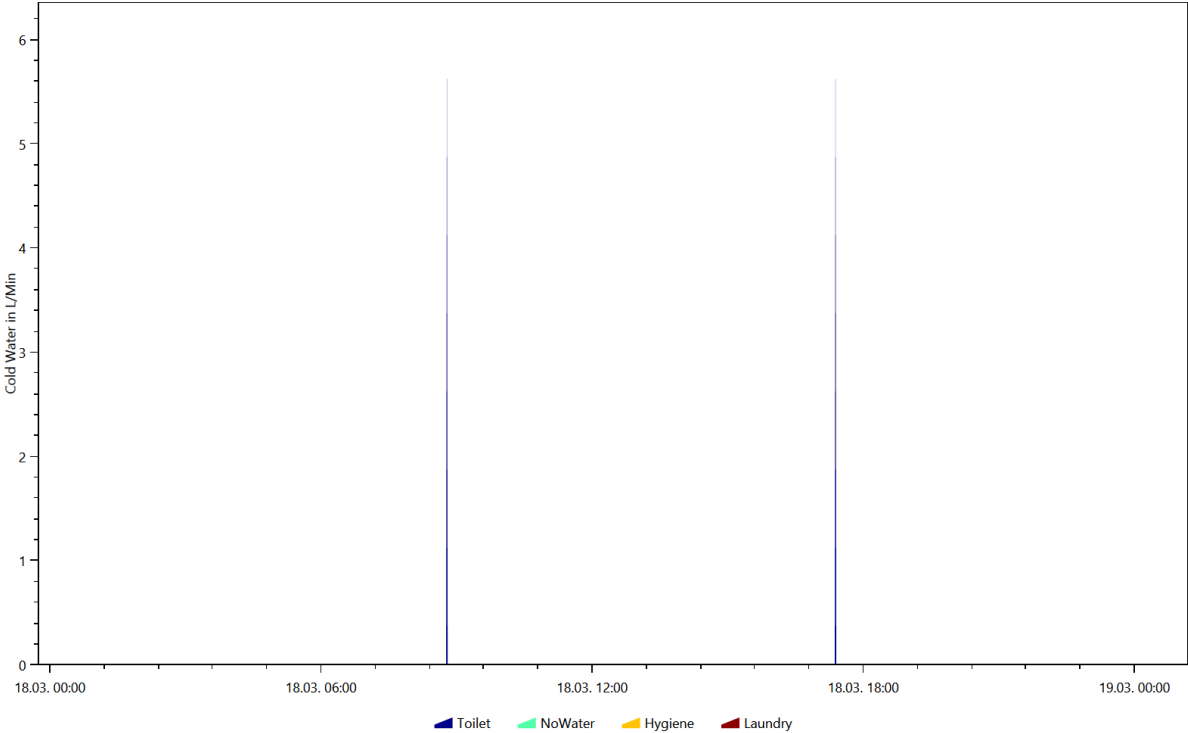
Cold Water, Coloring Scheme: Destatis Water Usage Statistics, Date 2016.10.9



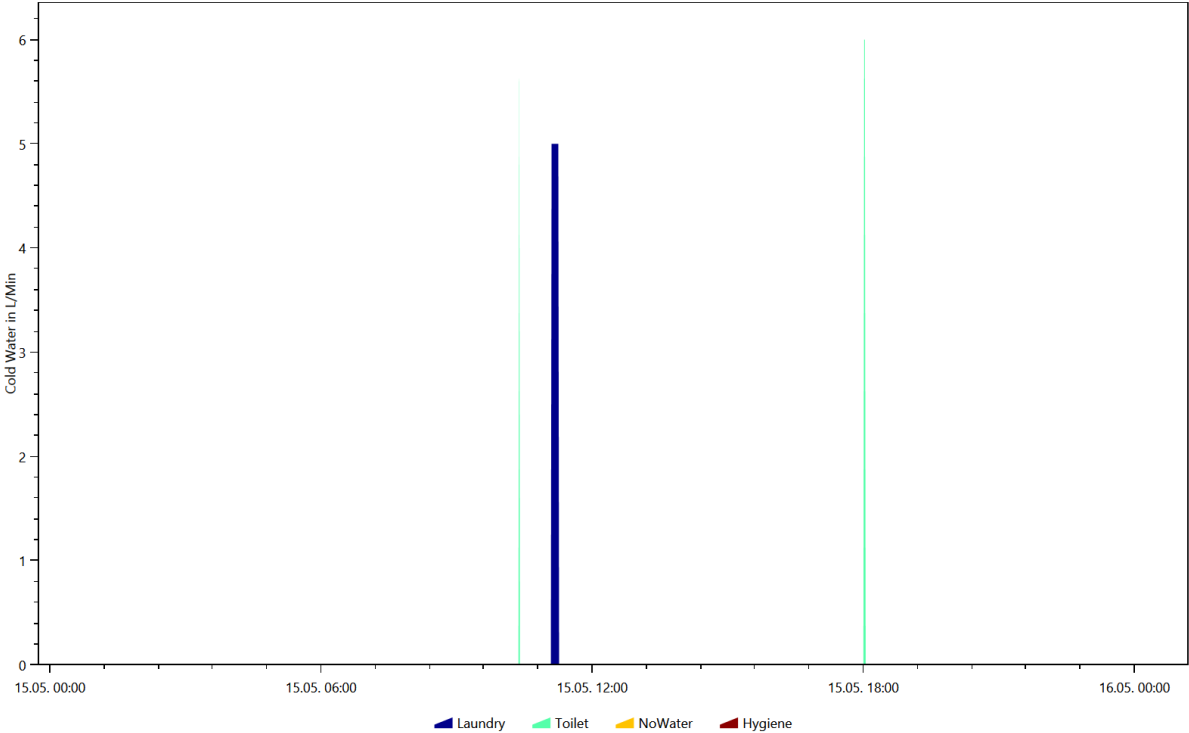
Cold Water, Coloring Scheme: Destatis Water Usage Statistics, Date 2016.11.21



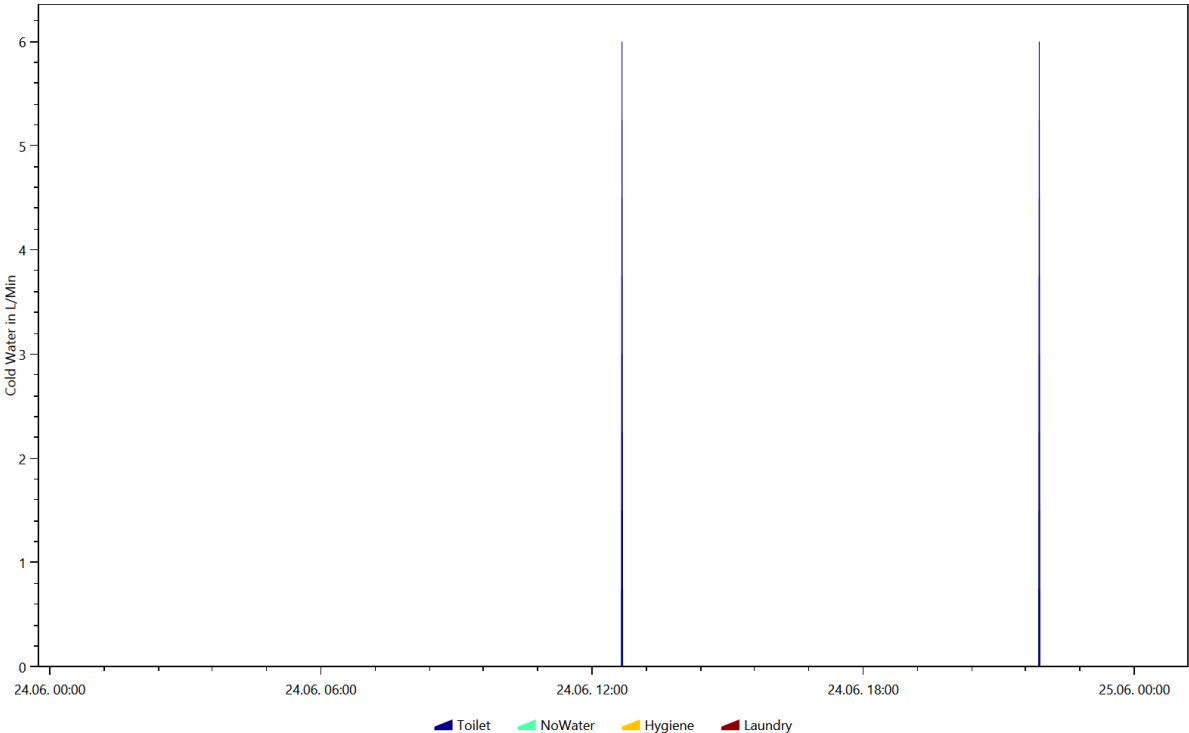
Cold Water, Coloring Scheme: Destatis Water Usage Statistics, Date 2016.3.18



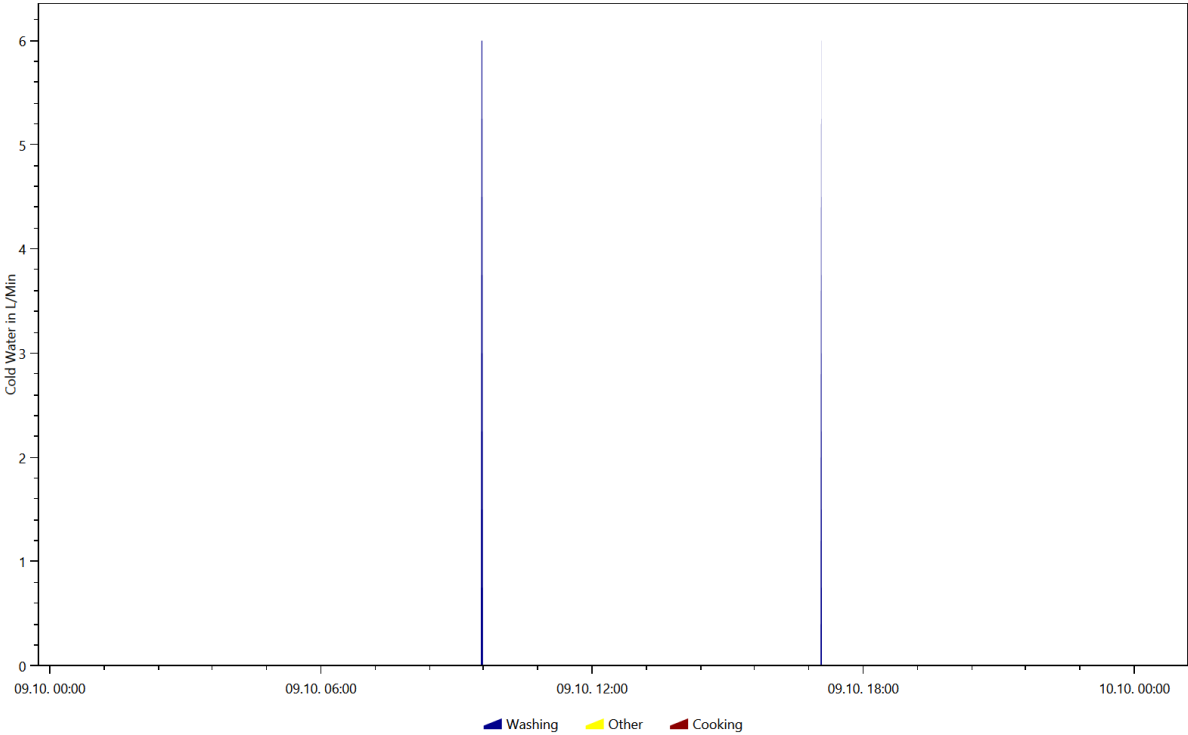
Cold Water, Coloring Scheme: Destatis Water Usage Statistics, Date 2016.5.15



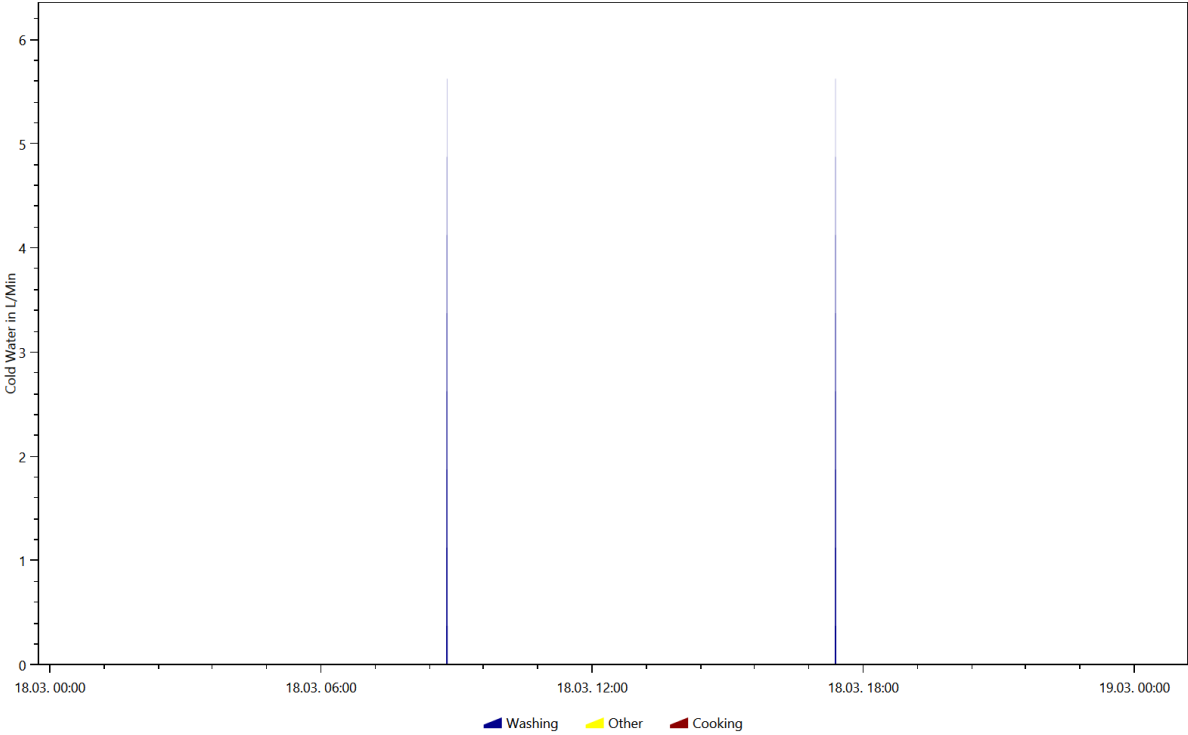
Cold Water, Coloring Scheme: Destatis Water Usage Statistics, Date 2016.6.24



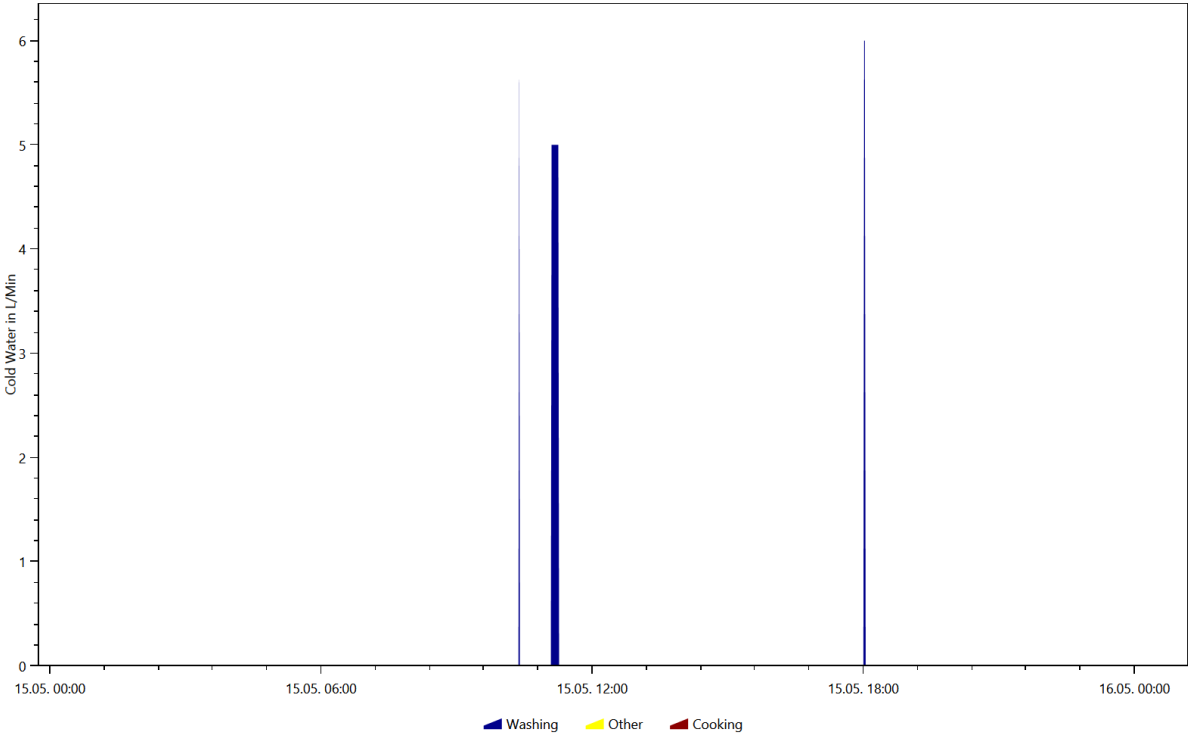
Cold Water, Coloring Scheme: Energieagentur.NRW Tags, Date 2016.10.9



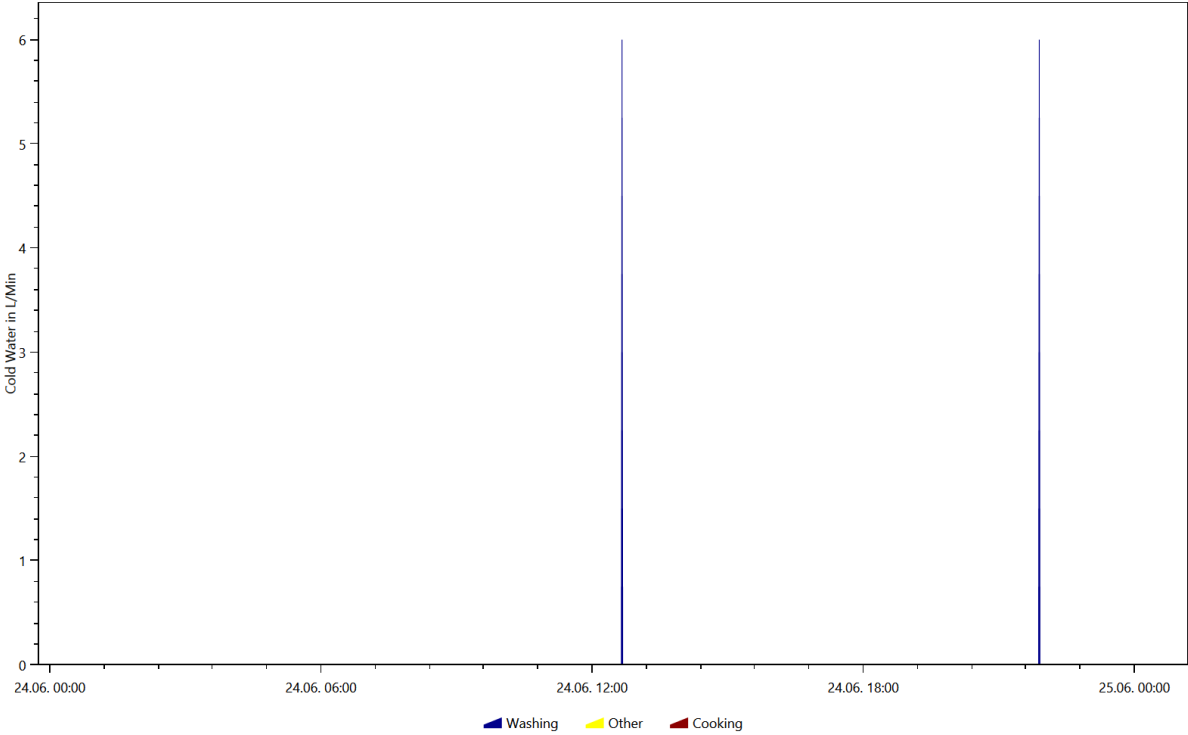
Cold Water, Coloring Scheme: Energieagentur.NRW Tags, Date 2016.3.18



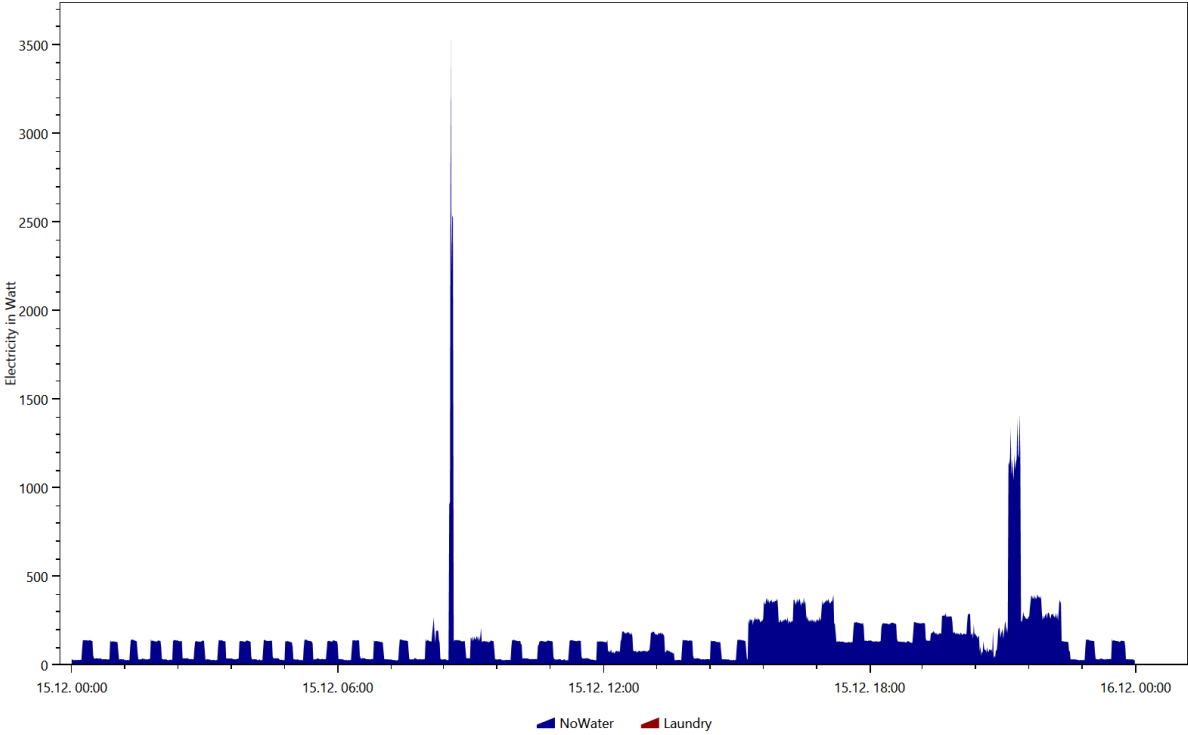
Cold Water, Coloring Scheme: Energieagentur.NRW Tags, Date 2016.5.15



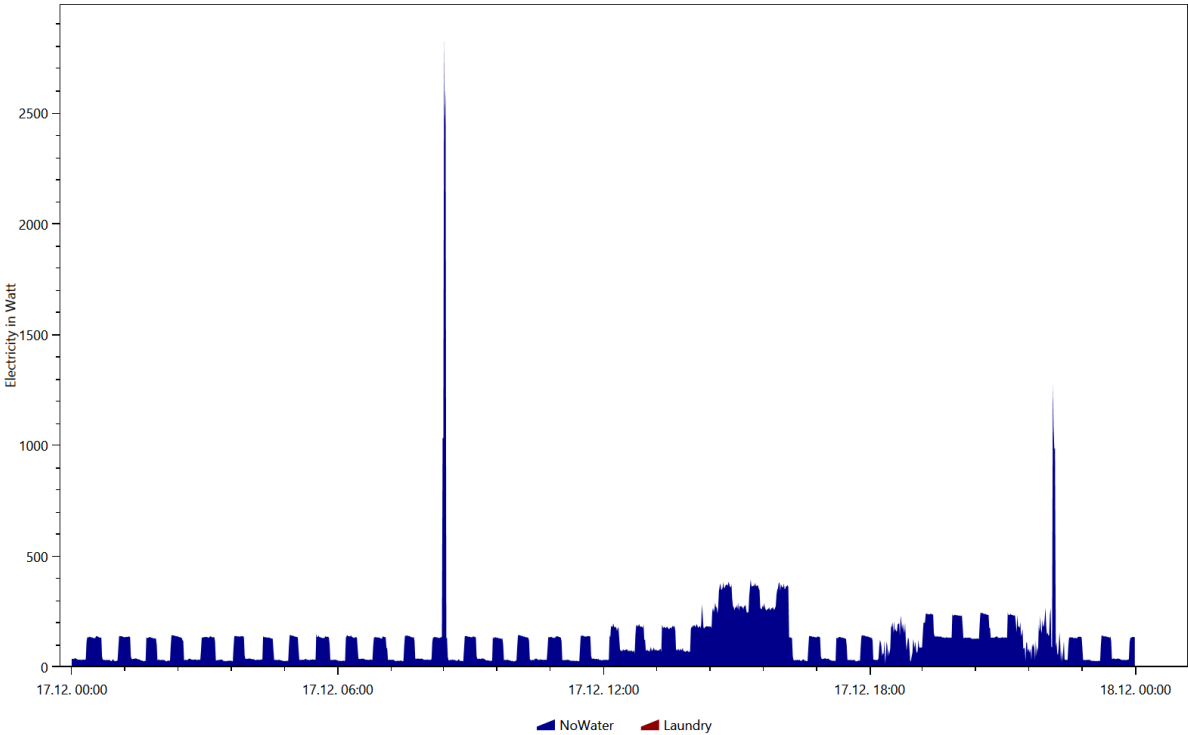
Cold Water, Coloring Scheme: Energieagentur.NRW Tags, Date 2016.6.24



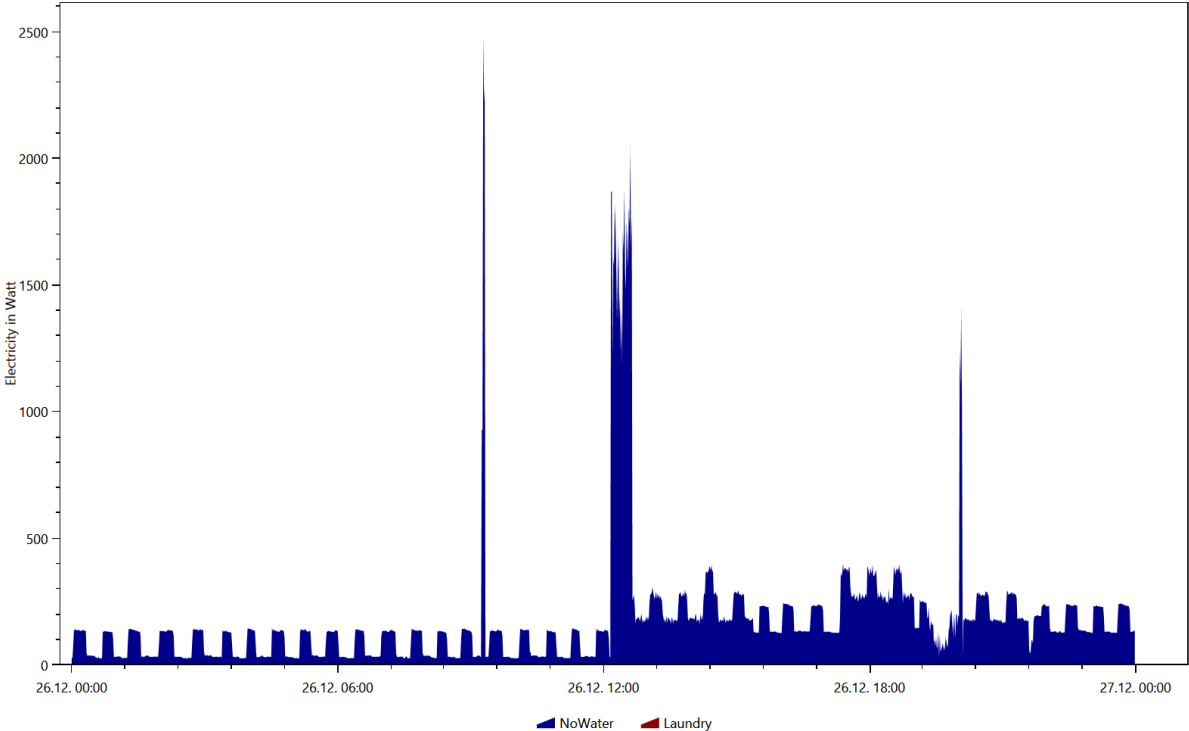
Electricity, Coloring Scheme: Destatis Water Usage Statistics, Date 2016.12.15



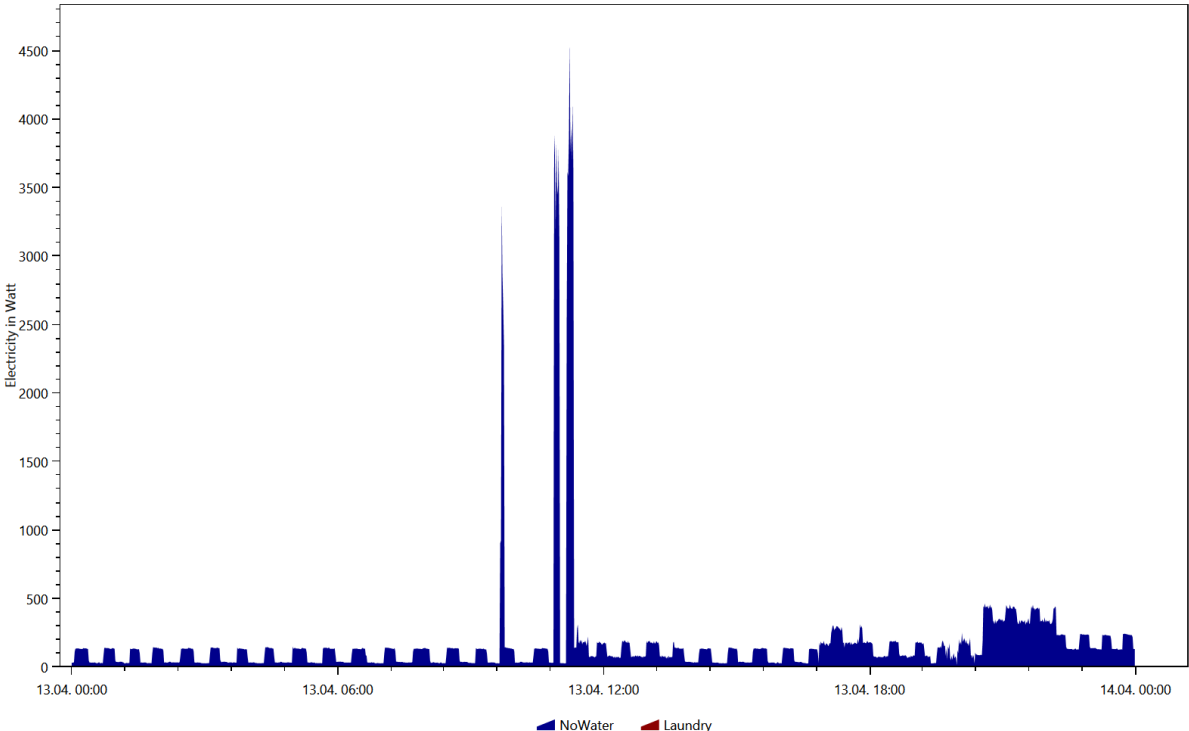
Electricity, Coloring Scheme: Destatis Water Usage Statistics, Date 2016.12.17



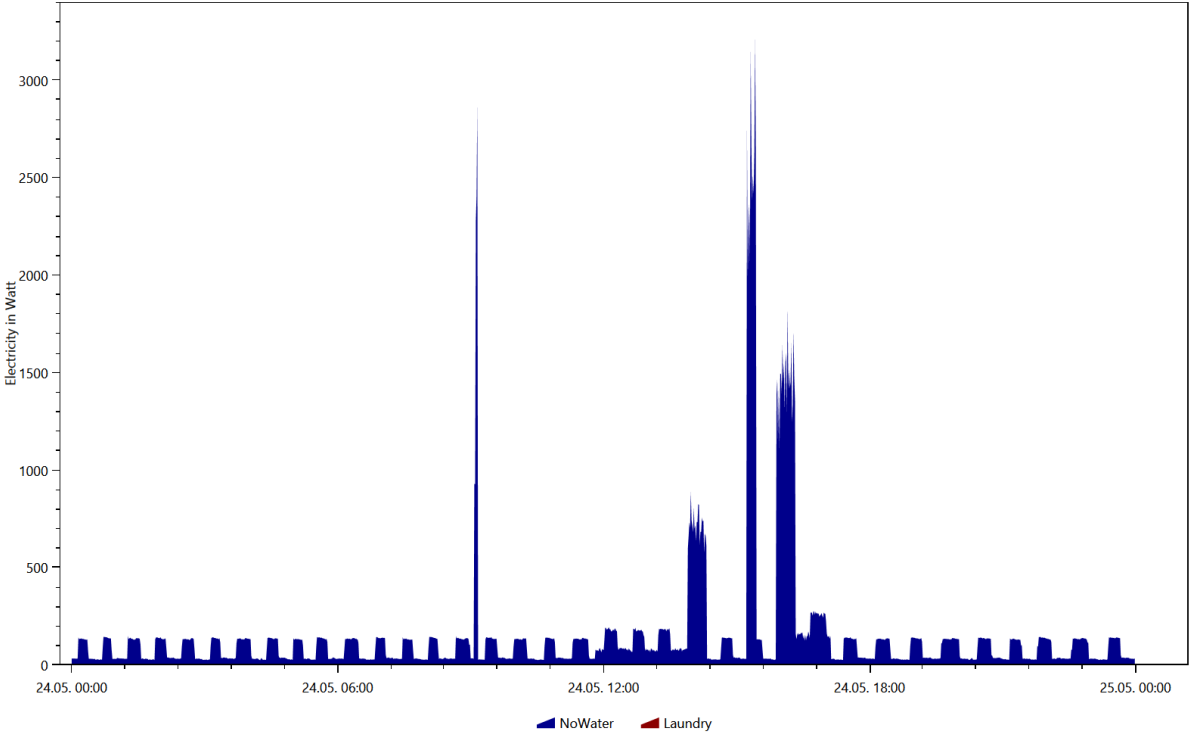
Electricity, Coloring Scheme: Destatis Water Usage Statistics, Date 2016.12.26



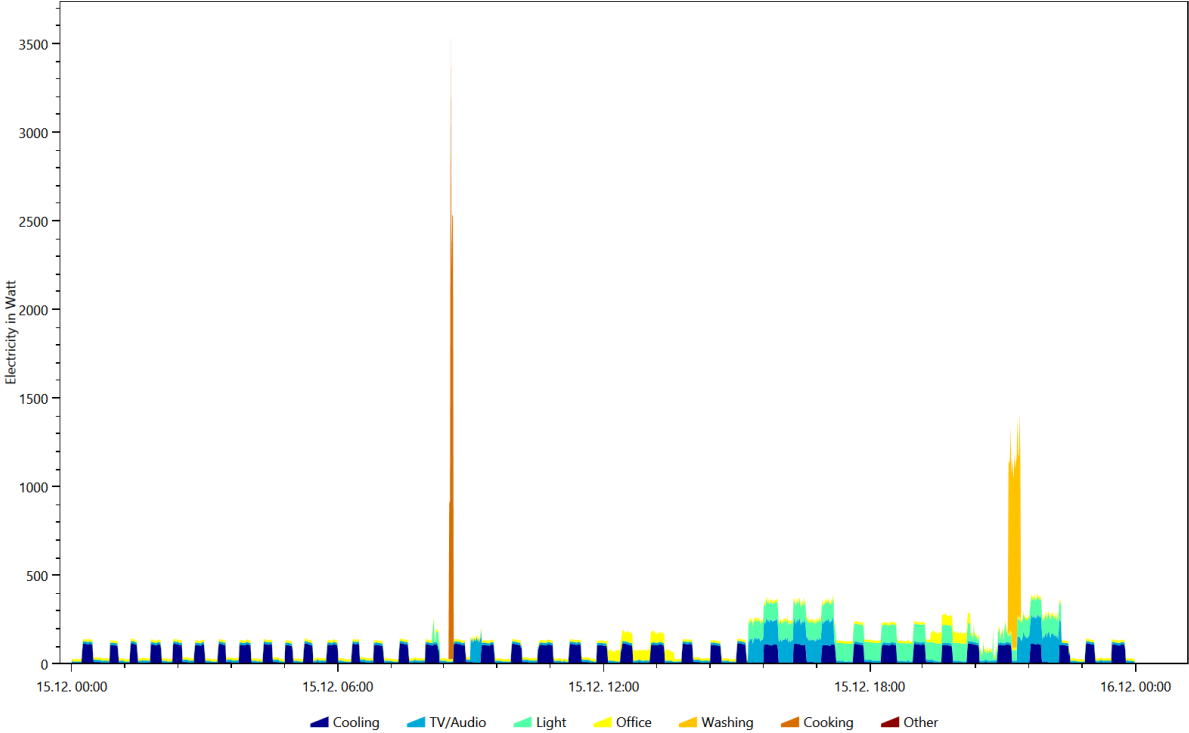
Electricity, Coloring Scheme: Destatis Water Usage Statistics, Date 2016.4.13



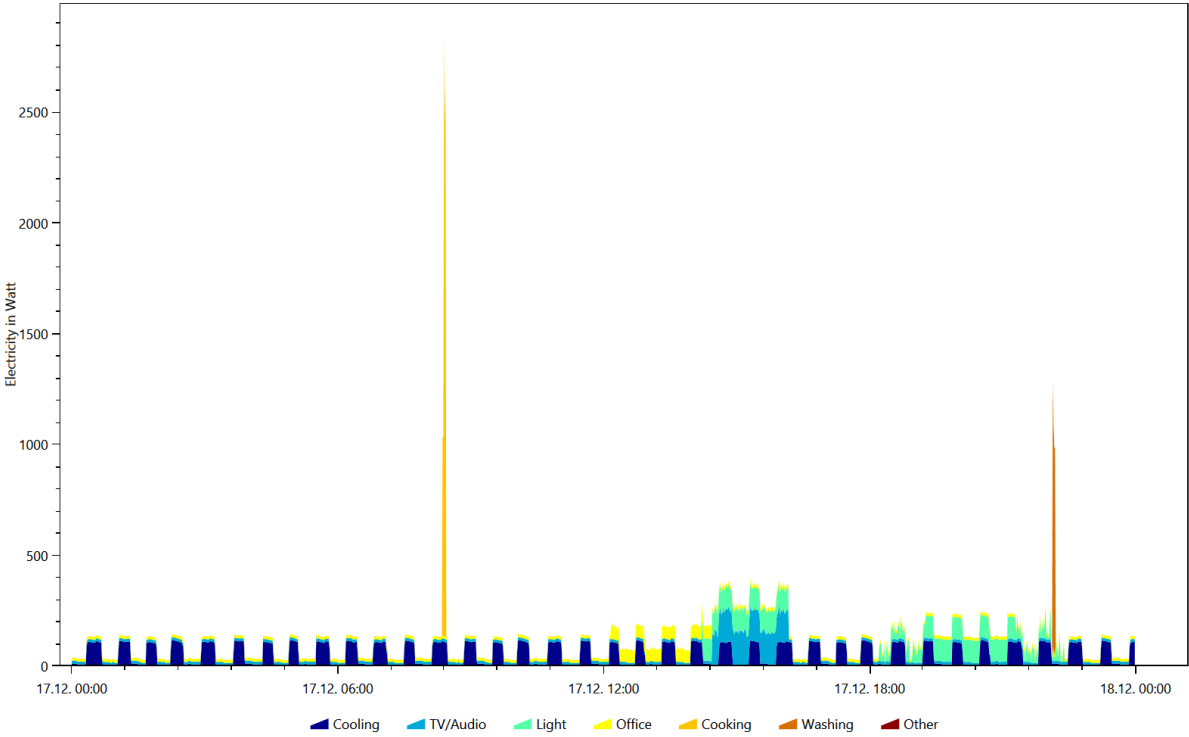
Electricity, Coloring Scheme: Destatis Water Usage Statistics, Date 2016.5.24



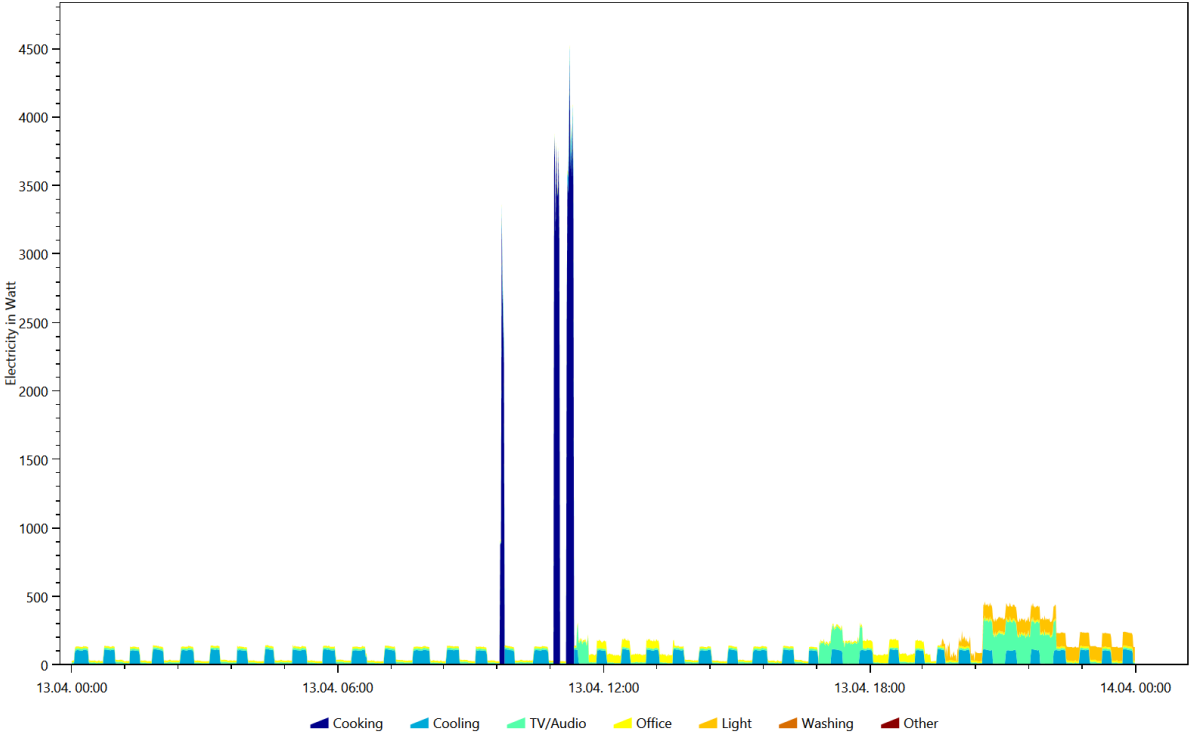
Electricity, Coloring Scheme: Energieagentur.NRW Tags, Date 2016.12.15



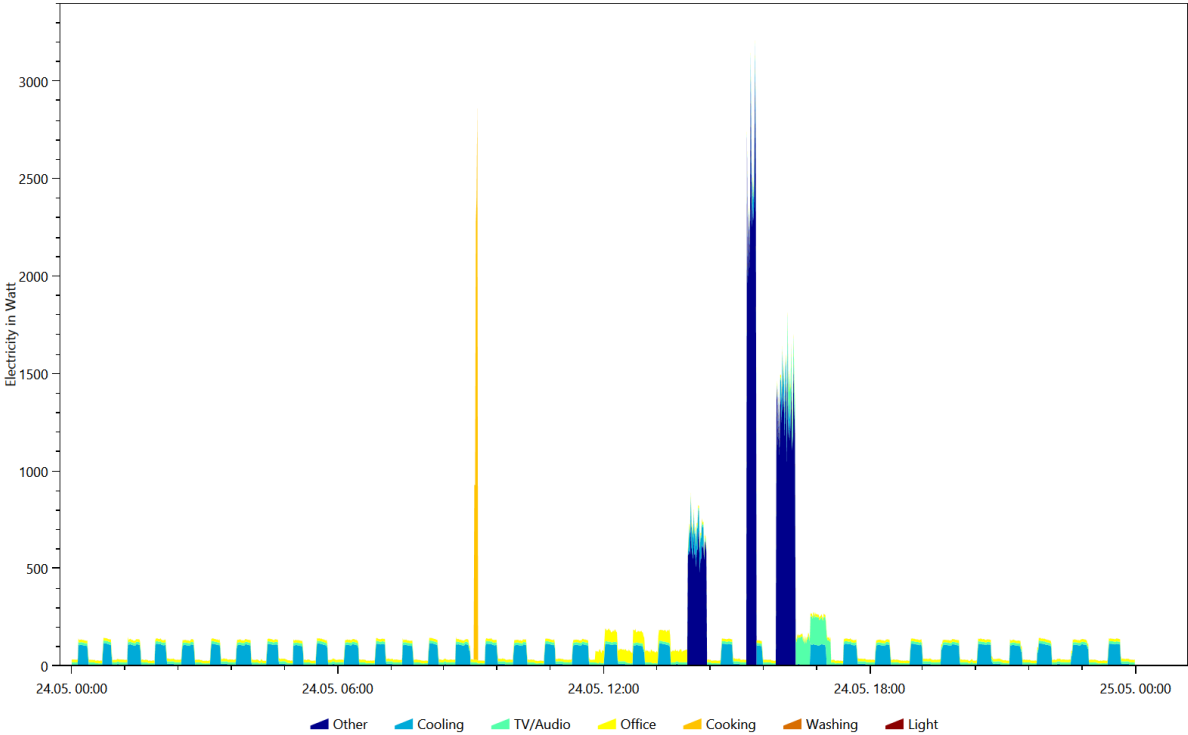
Electricity, Coloring Scheme: Energieagentur.NRW Tags, Date 2016.12.17



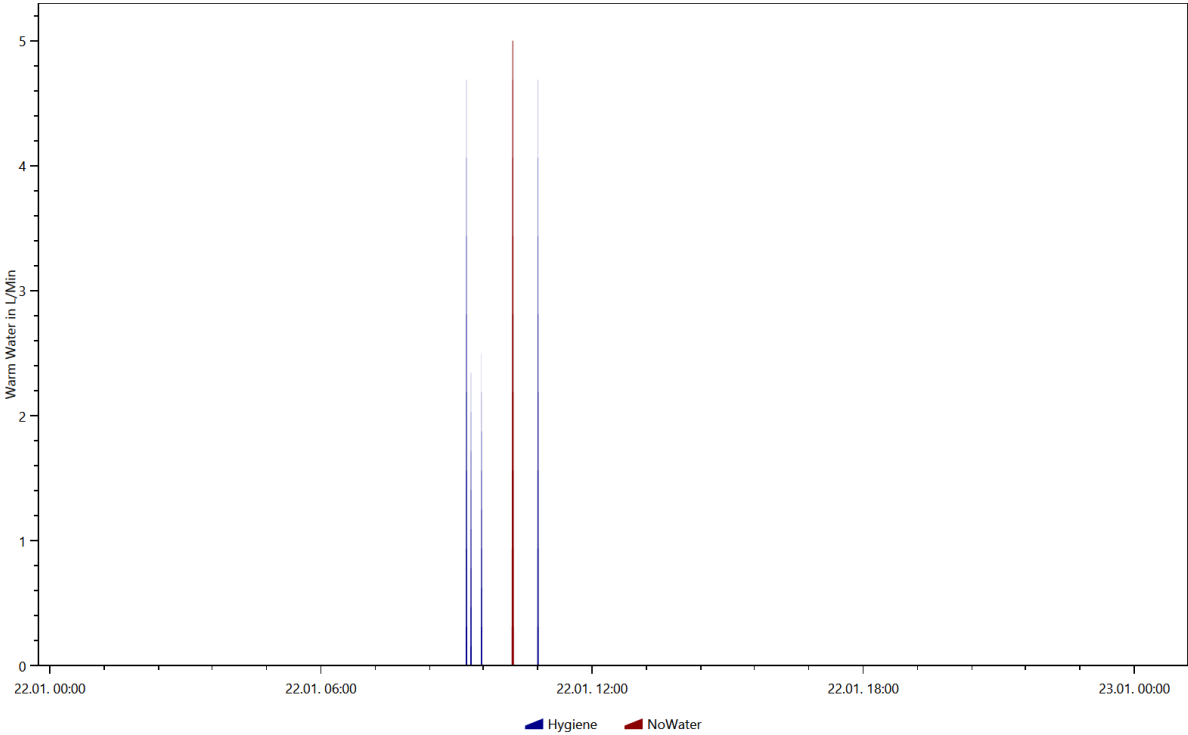
Electricity, Coloring Scheme: Energieagentur.NRW Tags, Date 2016.4.13



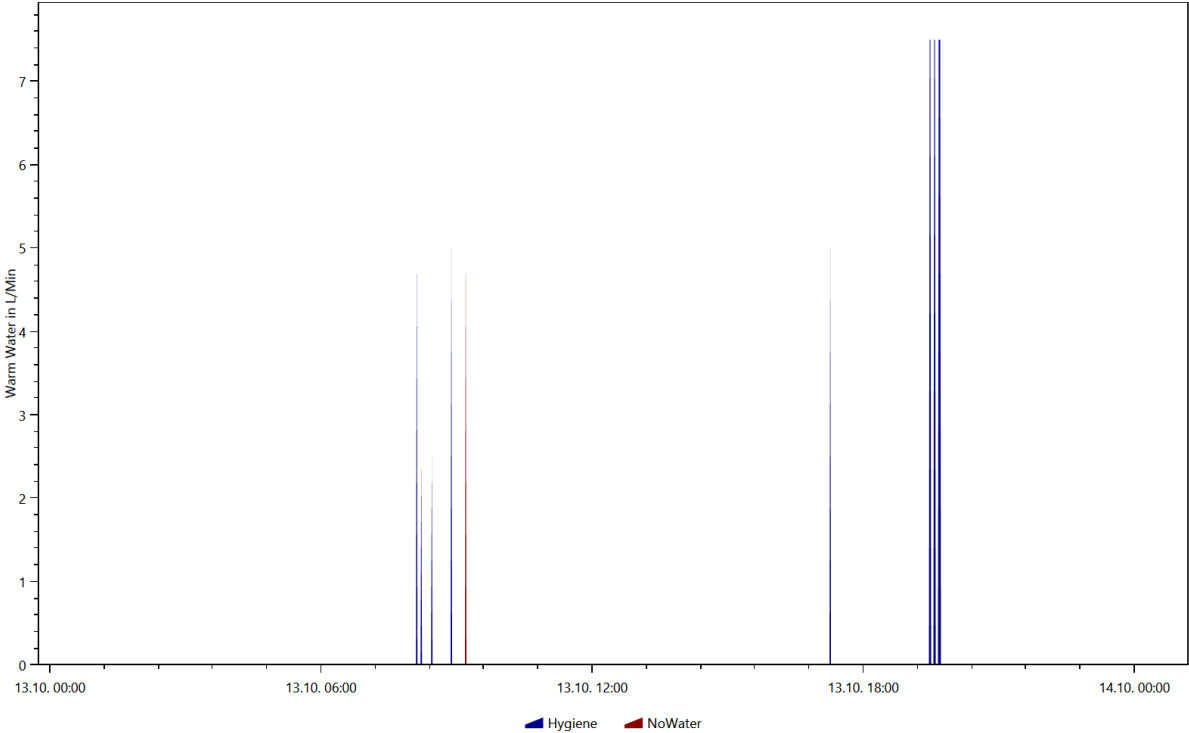
Electricity, Coloring Scheme: Energieagentur.NRW Tags, Date 2016.5.24



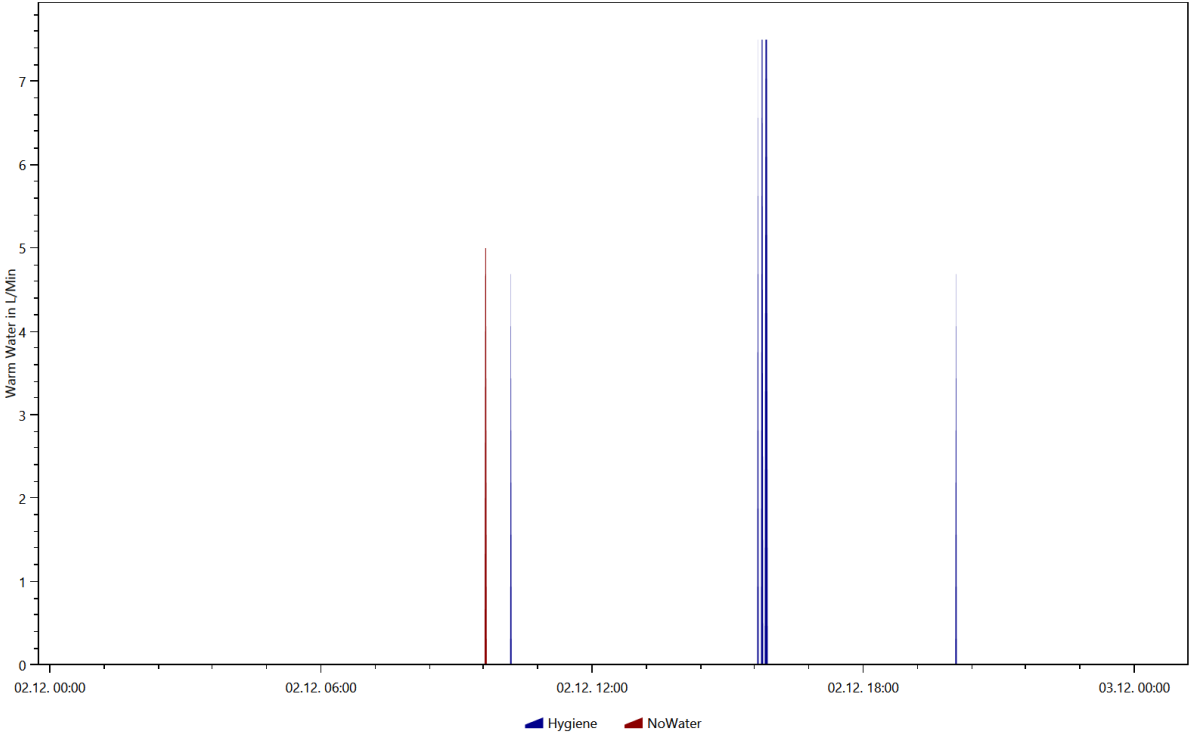
Warm Water, Coloring Scheme: Destatis Water Usage Statistics, Date 2016.1.22



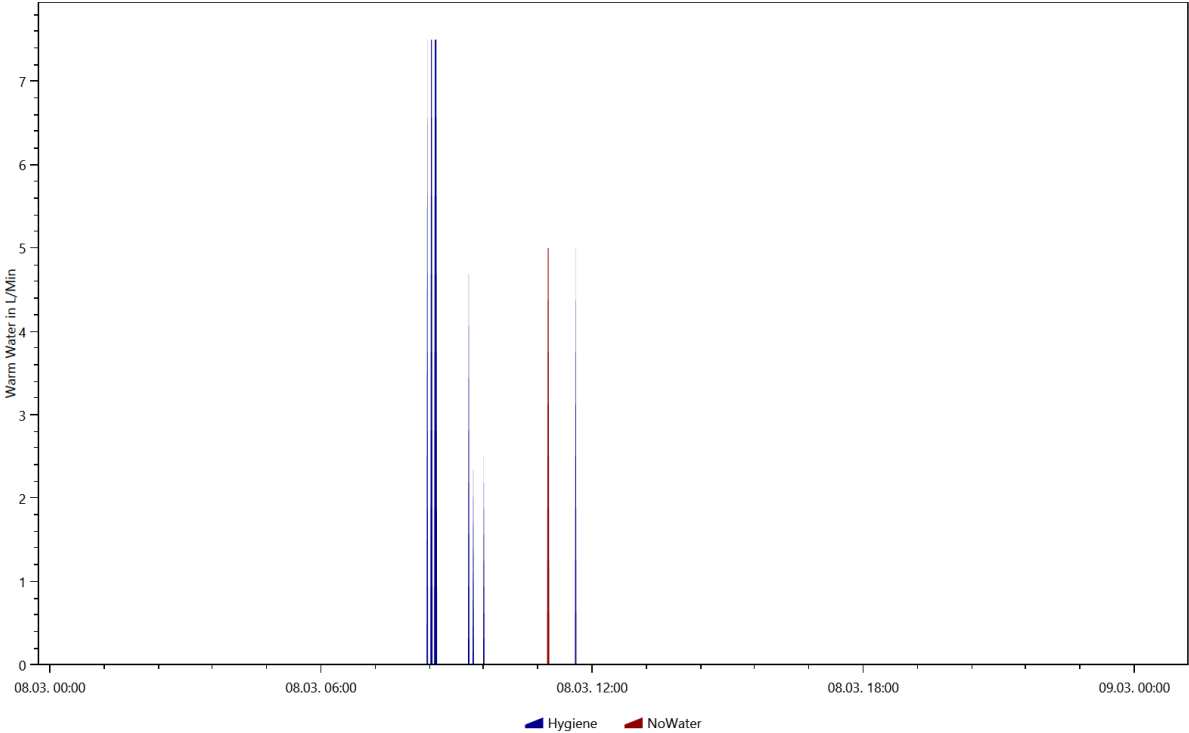
Warm Water, Coloring Scheme: Destatis Water Usage Statistics, Date 2016.10.13



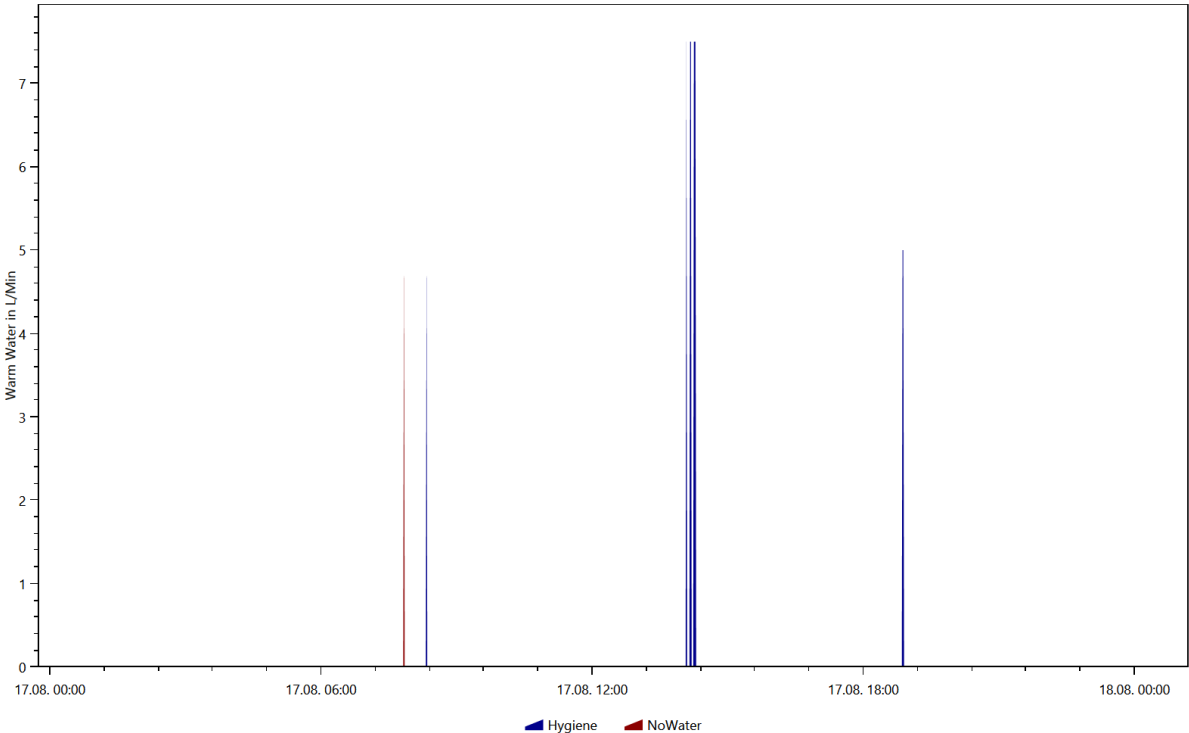
Warm Water, Coloring Scheme: Destatis Water Usage Statistics, Date 2016.12.2



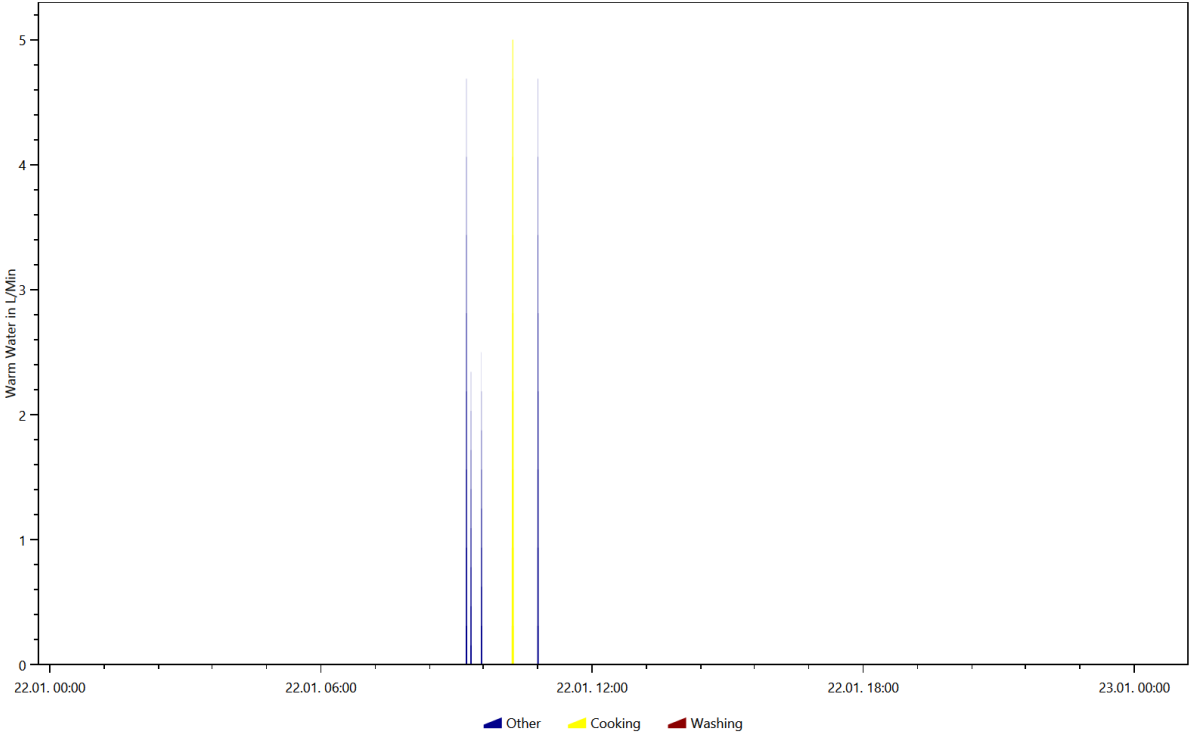
Warm Water, Coloring Scheme: Destatis Water Usage Statistics, Date 2016.3.8



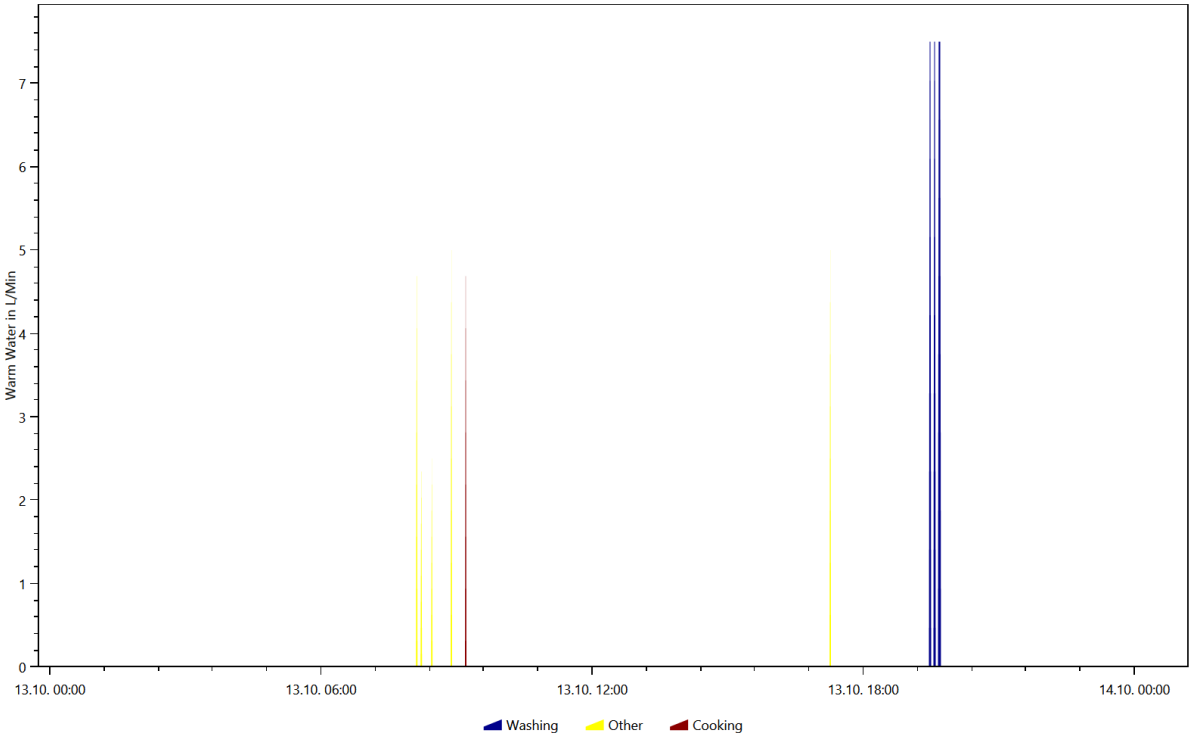
Warm Water, Coloring Scheme: Destatis Water Usage Statistics, Date 2016.8.17



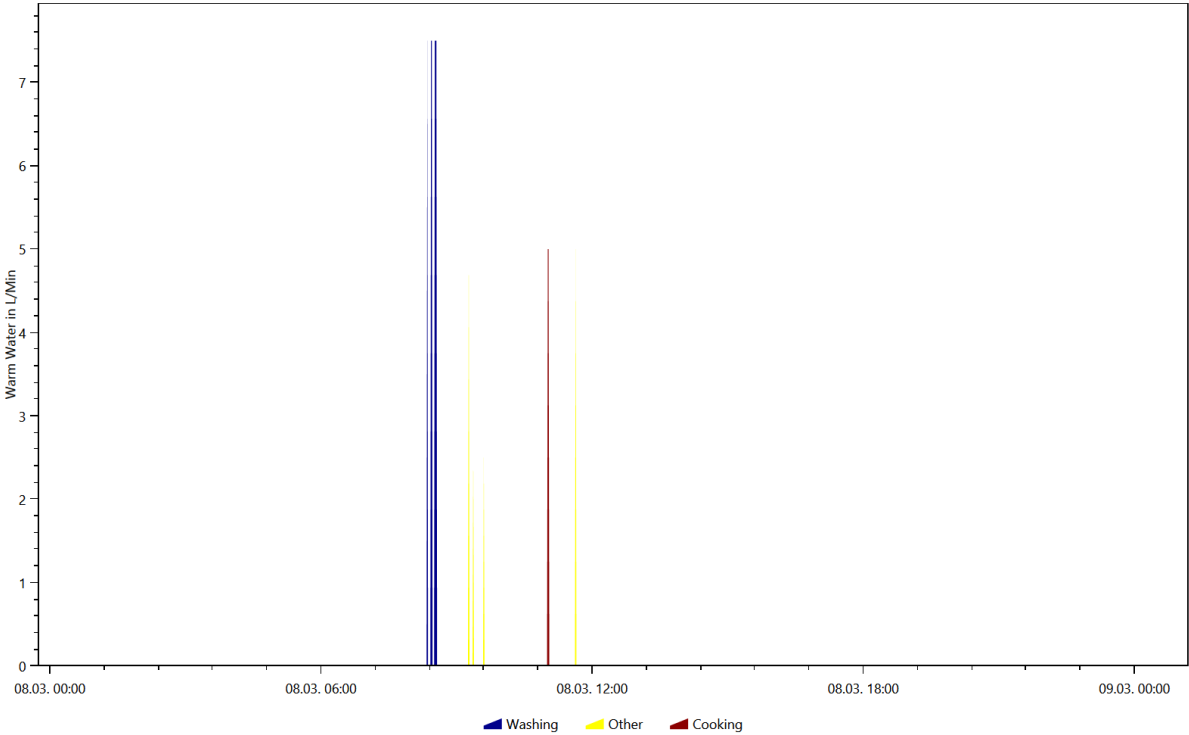
Warm Water, Coloring Scheme: Energieagentur.NRW Tags, Date 2016.1.22



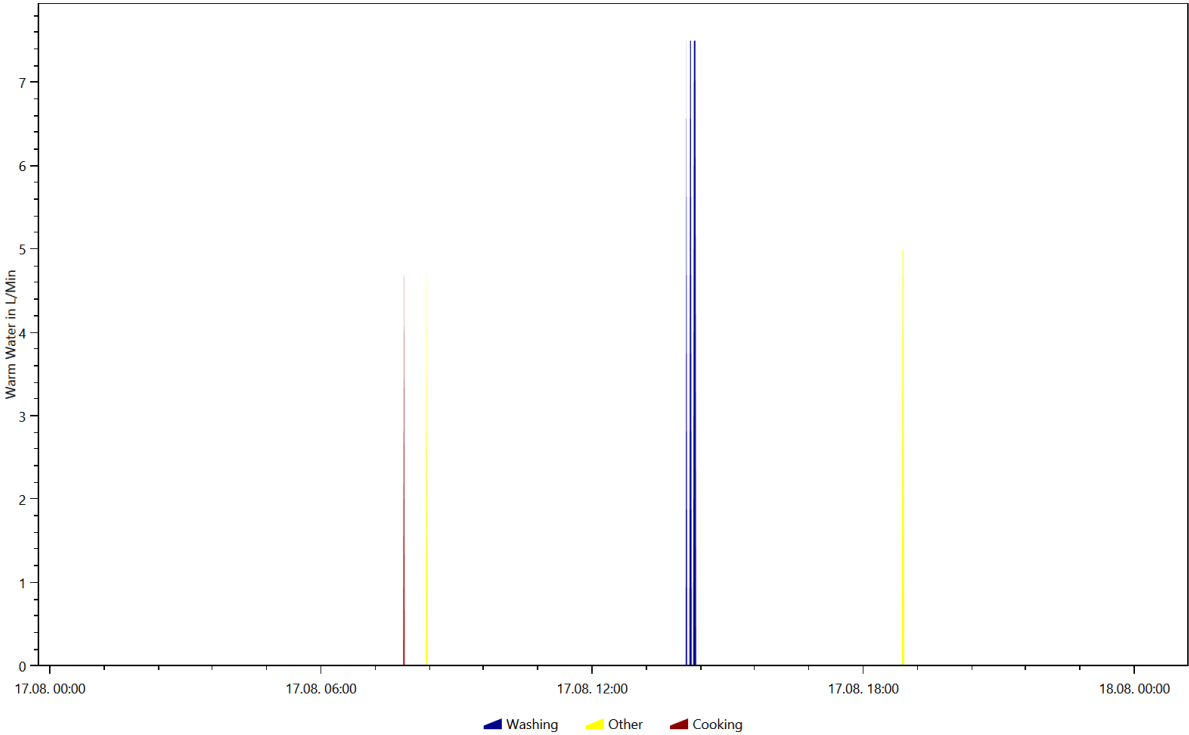
Warm Water, Coloring Scheme: Energieagentur.NRW Tags, Date 2016.10.13



Warm Water, Coloring Scheme: Energieagentur.NRW Tags, Date 2016.3.8



Warm Water, Coloring Scheme: Energieagentur.NRW Tags, Date 2016.8.17

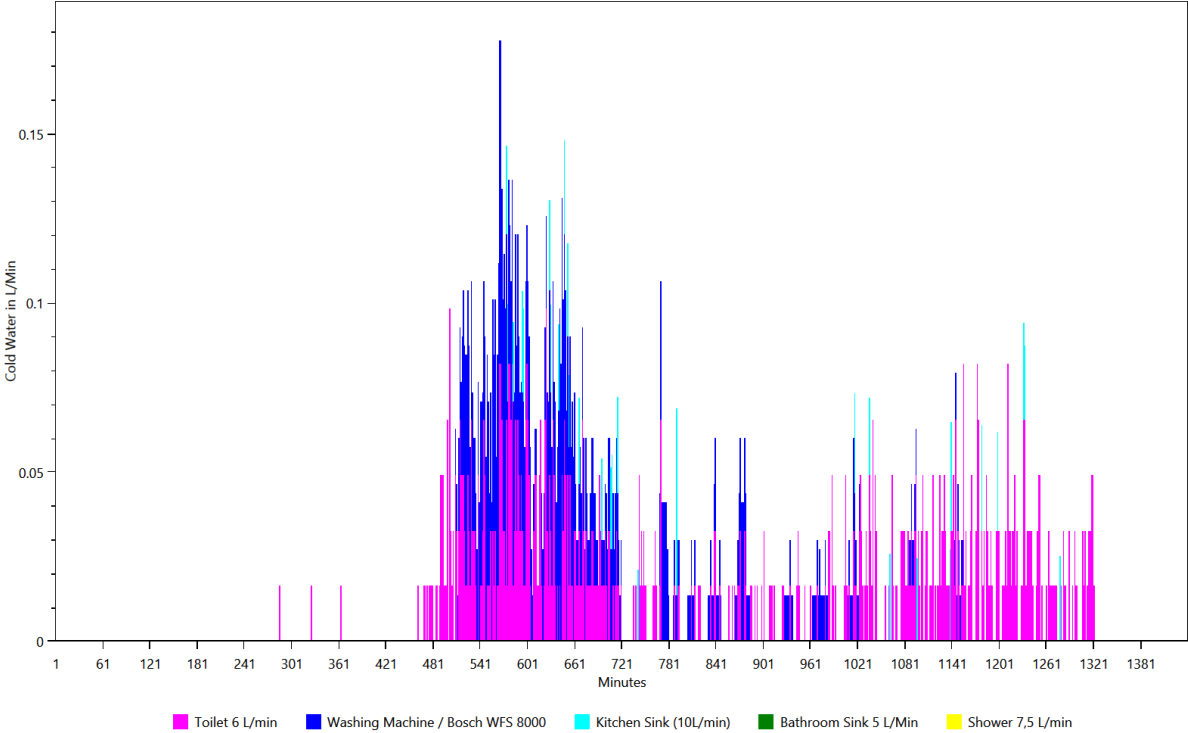


Overview of the time and power of the use per load type per device

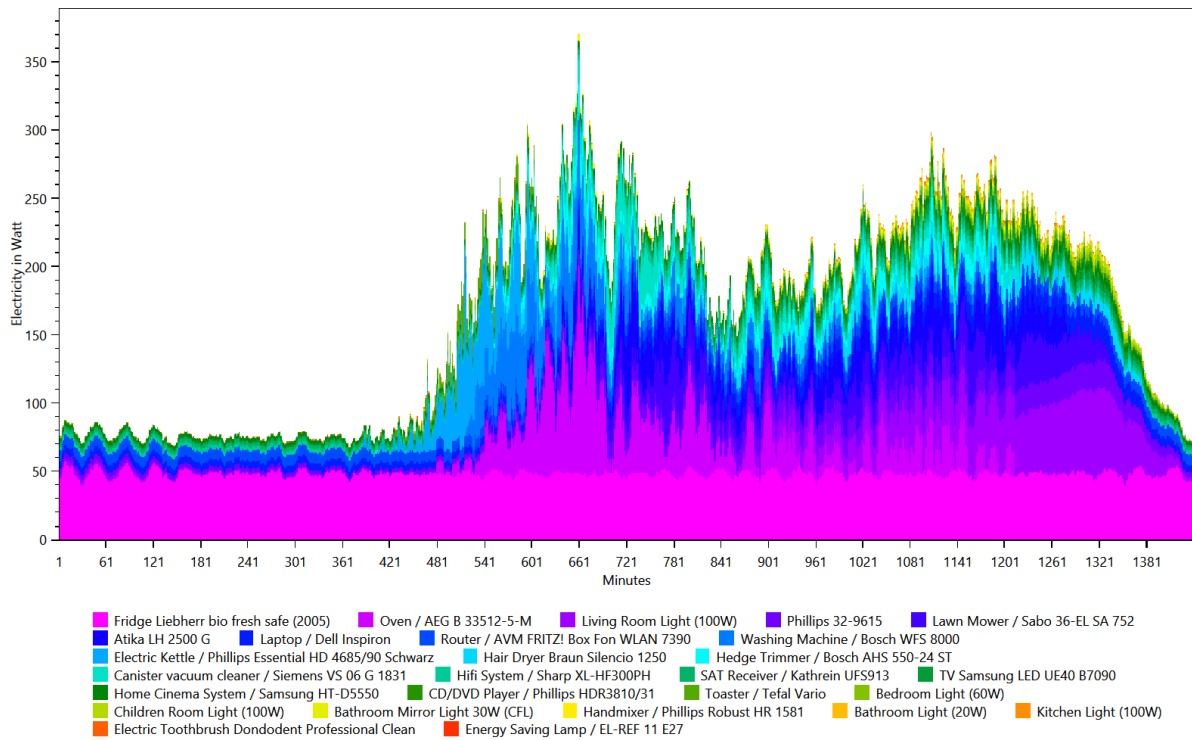
This is made from the files starting with: TimeOfUseEnergyProfiles

The time of use energy profiles show when each device was used and how much power it used.

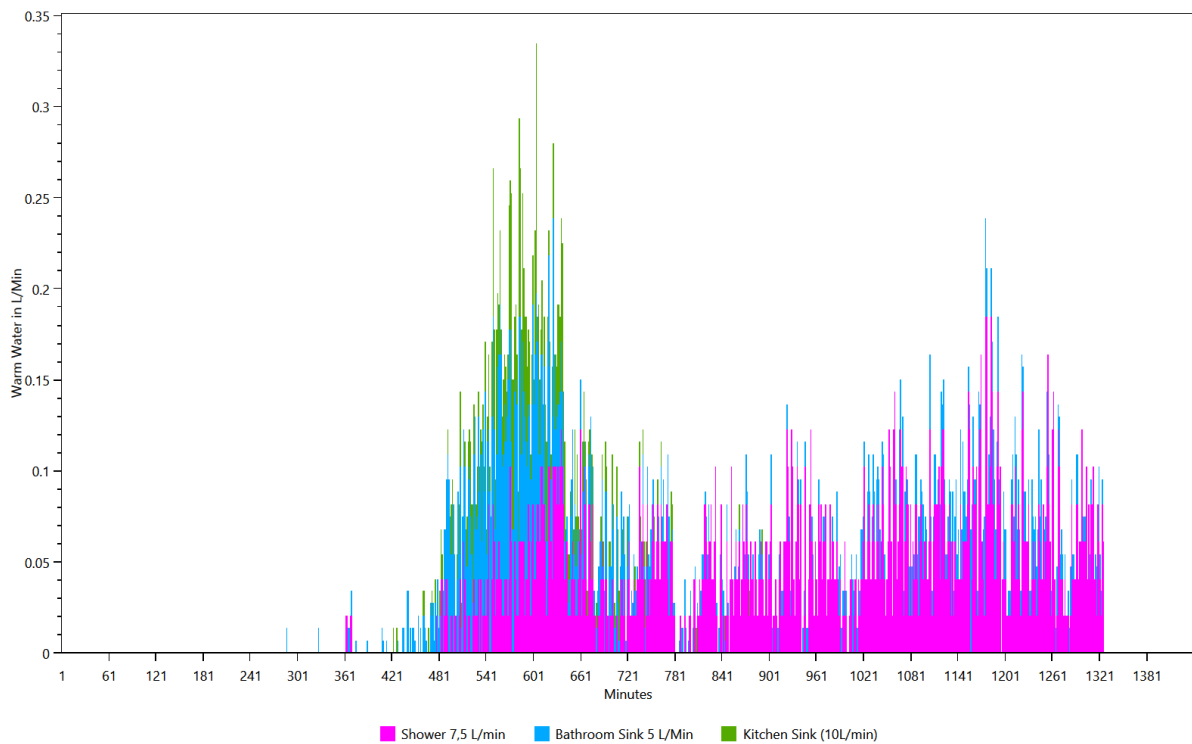
Cold Water



Electricity



Warm Water

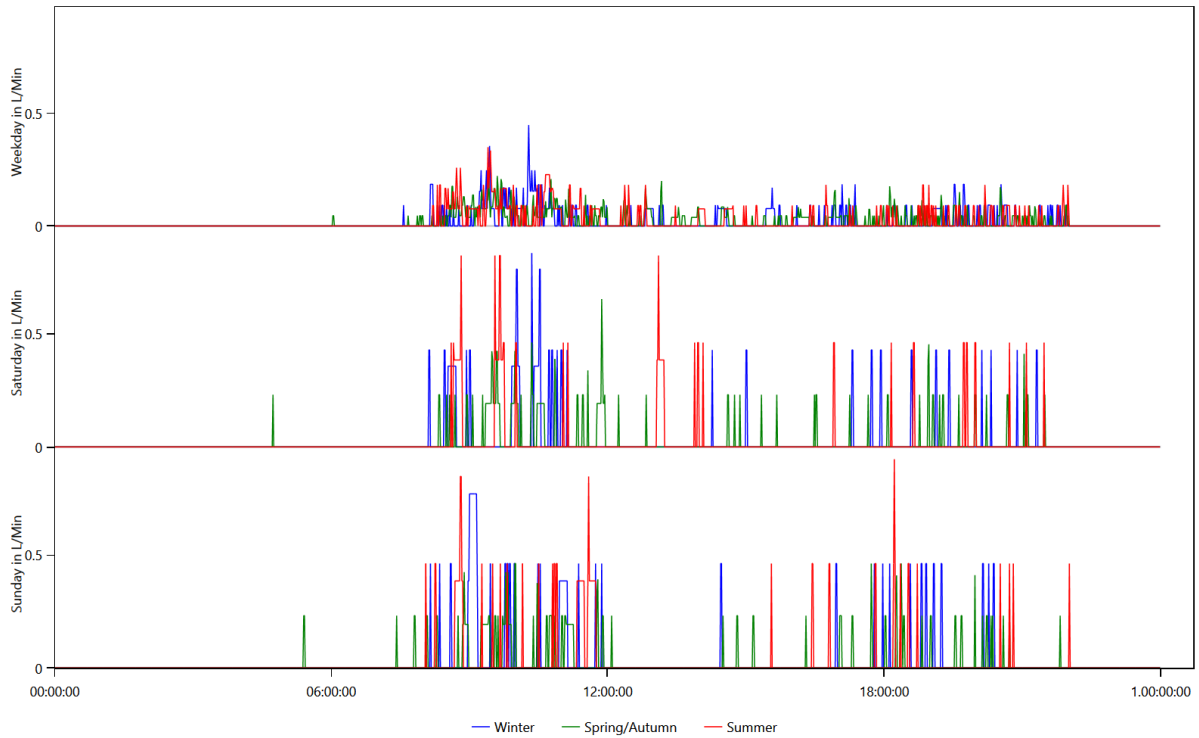


Energy use per load type during different seasons, split by weekday/saturday/sunday

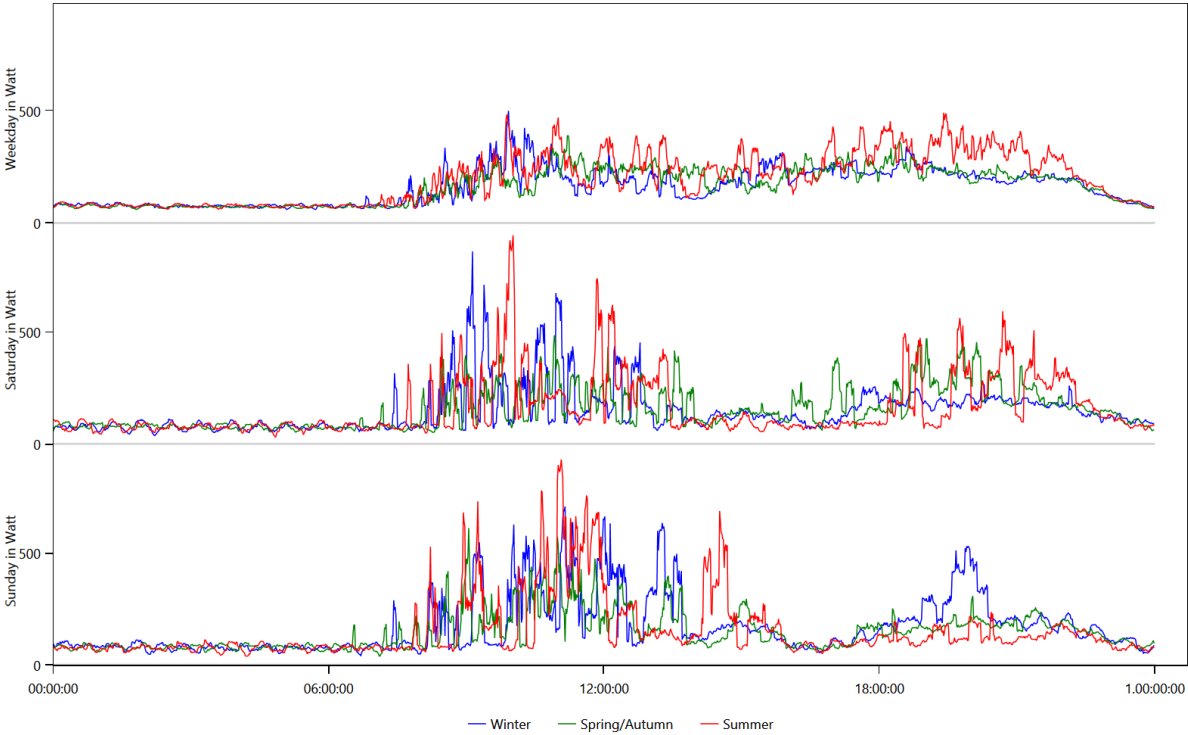
This is made from the files starting with: **WeekdayProfiles**

This graph shows for each load type the average power consumption per day grouped by season and weekday/saturday/sunday.

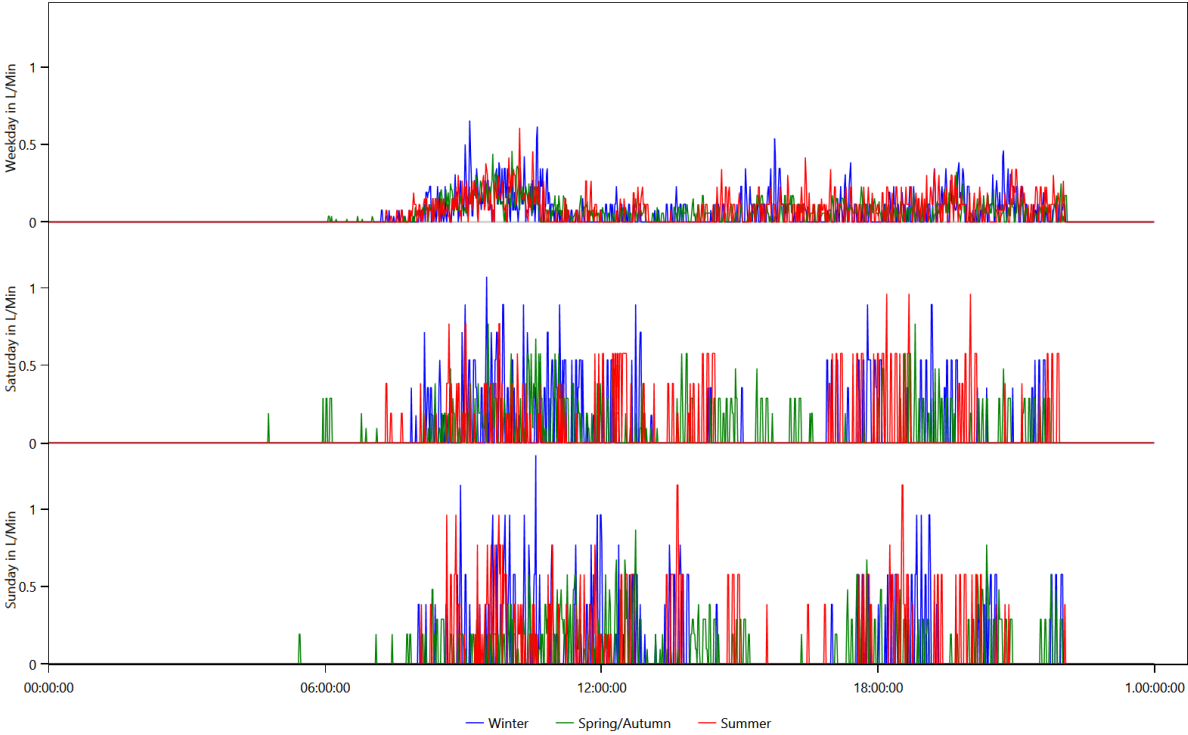
Cold Water



Electricity



Warm Water

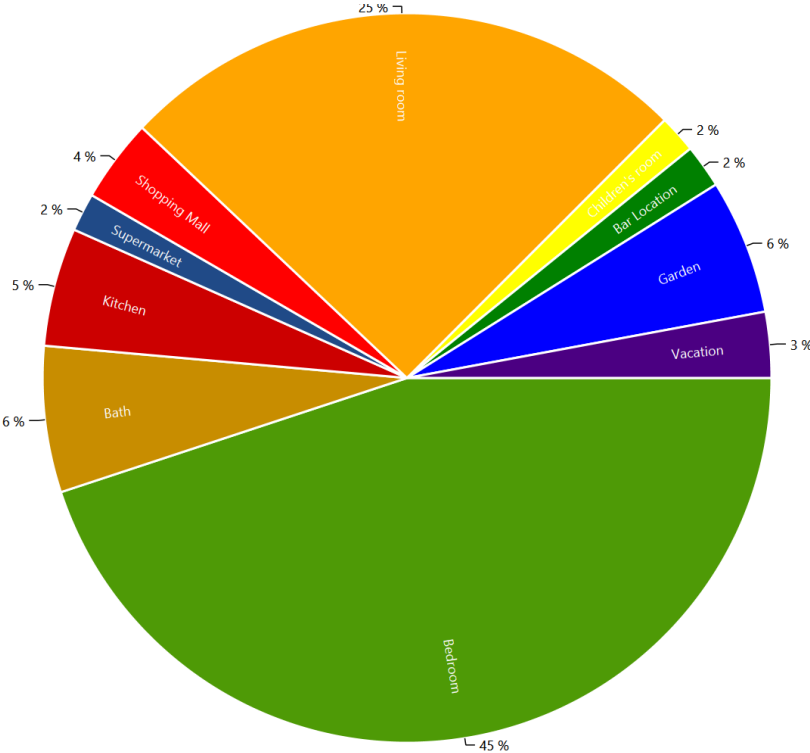


Location Distribution per Person

This is made from the files starting with: LocationStatistics

These charts show where the persons spend their time.

CHR36 Anne (51 Female)



Actions.csv

This is made from the files starting with: Actions

These files show the actions of each person in the household. The content looks like this:

Actions.HH0.csv

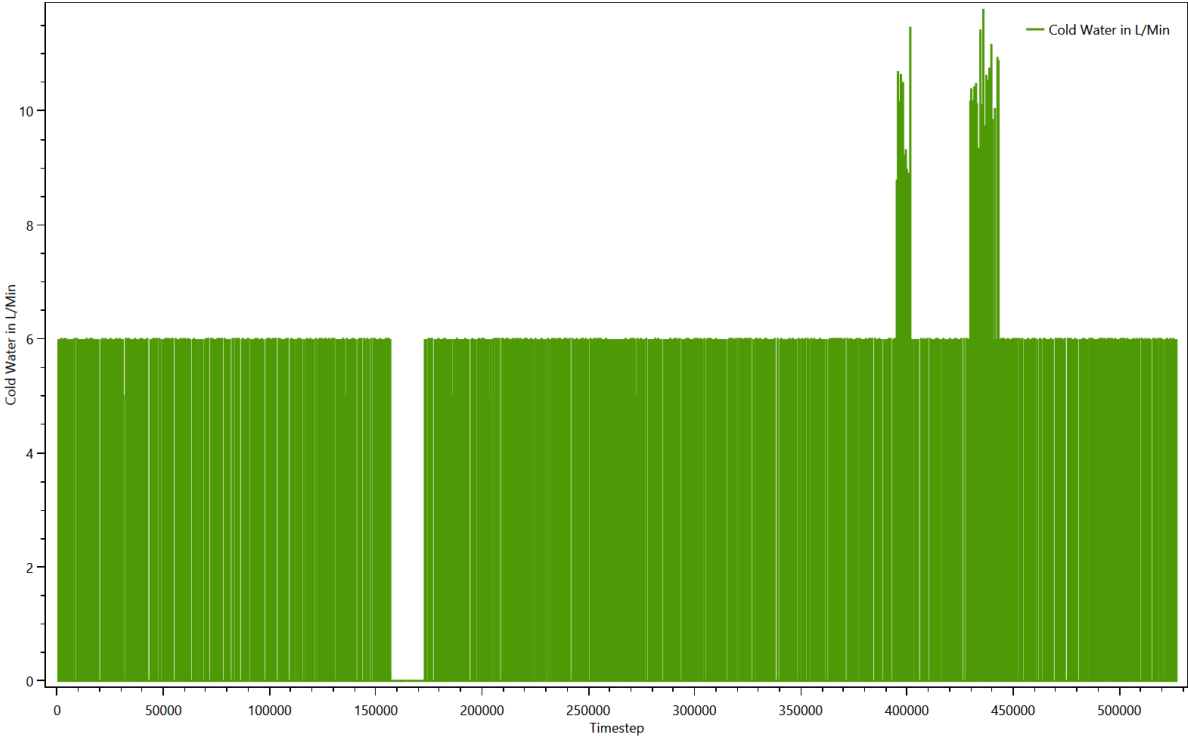
Time step;Calendertime;Person;Selected affordance;Affordance Category;Is Sick
0;01.01.2016 00:00;CHR36 Anne (51/Female);sleep bed 01 (10 h);sleep;False;
554;01.01.2016 09:14;CHR36 Anne (51/Female);get ready in the morning (women);hygiene;False;
574;01.01.2016 09:34;CHR36 Anne (51/Female);eat small breakfast (25min) interrupting subaff, no
alarm;cooking;False;
601;01.01.2016 10:01;CHR36 Anne (51/Female);go to the toilet;hygiene;False;
606;01.01.2016 10:06;CHR36 Anne (51/Female);wash 1 dishes by hand;cleaning;False;
631;01.01.2016 10:31;CHR36 Anne (51/Female);go shopping for food in the supermarket (1.5
h);shopping;False;
734;01.01.2016 12:14;CHR36 Anne (51/Female);take a shower without hair washing (women);hygiene;False;
787;01.01.2016 13:07;CHR36 Anne (51/Female);clean the bath;cleaning;False;
860;01.01.2016 14:20;CHR36 Anne (51/Female);rest for 10 min;sleep;False;
870;01.01.2016 14:30;CHR36 Anne (51/Female);go shopping (4 h);Outside recreation;False;
1115;01.01.2016 18:35;CHR36 Anne (51/Female);bake a cake;cooking;False;
1154;01.01.2016 19:14;CHR36 Anne (51/Female);play a puzzle game;Offline Entertainment;False;
1212;01.01.2016 20:12;CHR36 Anne (51/Female);go to the toilet;hygiene;False;
1217;01.01.2016 20:17;CHR36 Anne (51/Female);watch the news;Passive Entertainment (TV etc.);False;
1234;01.01.2016 20:34;CHR36 Anne (51/Female);read a book on the couch all the time;Offline
Entertainment;False;
1368;01.01.2016 22:48;CHR36 Anne (51/Female);sleep bed 01 (10 h);sleep;False;
1929;02.01.2016 08:09;CHR36 Anne (51/Female);eat small breakfast (25min) interrupting subaff, no
alarm;cooking;False;
1951;02.01.2016 08:31;CHR36 Anne (51/Female);rest for 10 min;sleep;False;
1962;02.01.2016 08:42;CHR36 Anne (51/Female);wash 1 dishes by hand;cleaning;False;

Sum Profiles

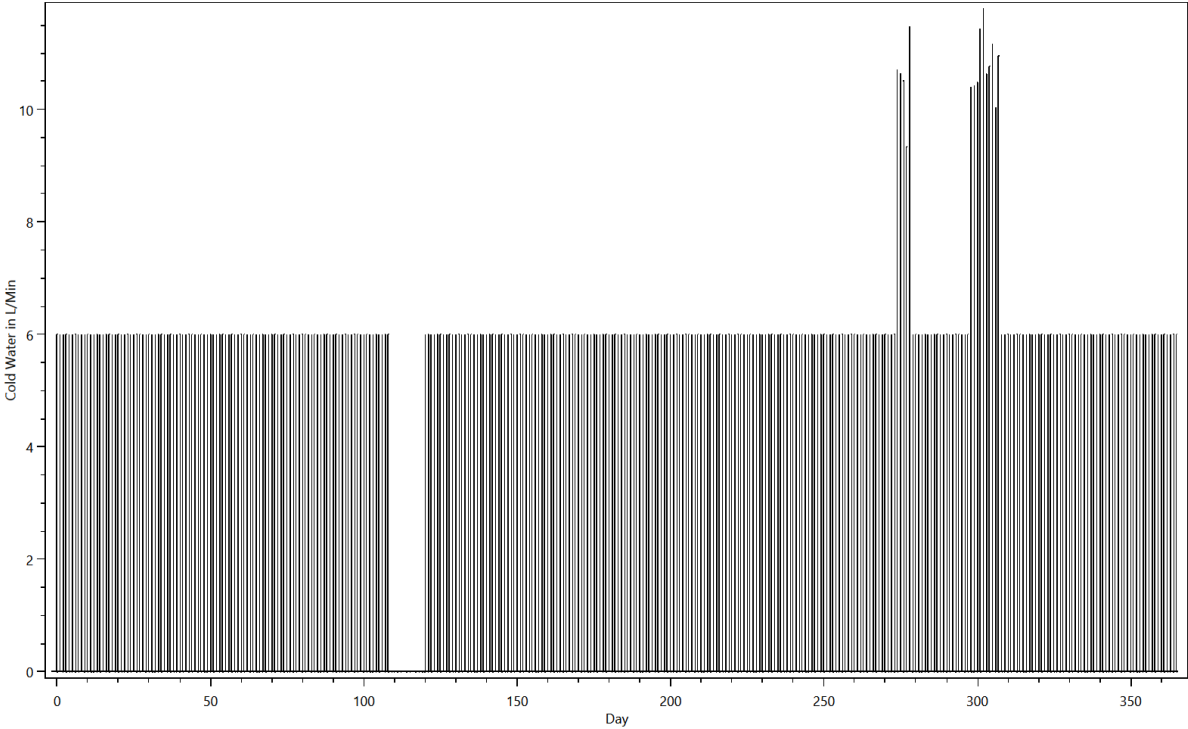
This is made from the files starting with: SumProfiles

This shows the energy use during the simulation.

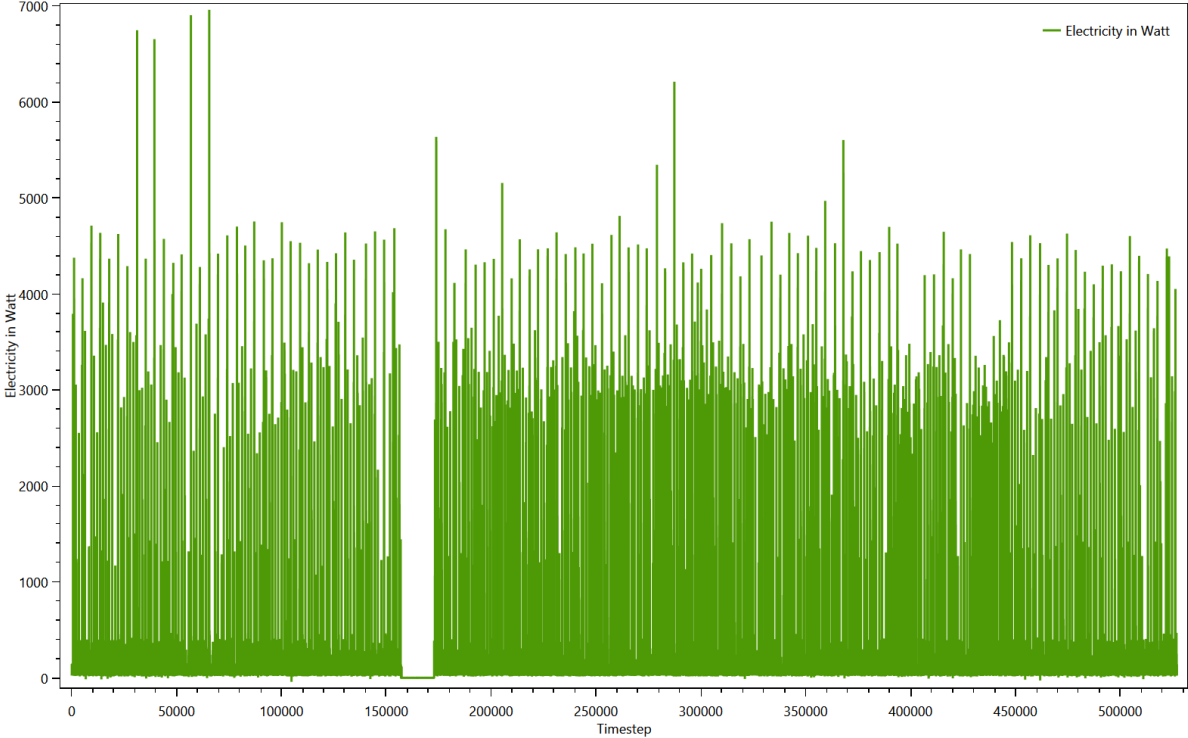
Summed up curve for Cold Water from SumProfiles.Cold Water.png



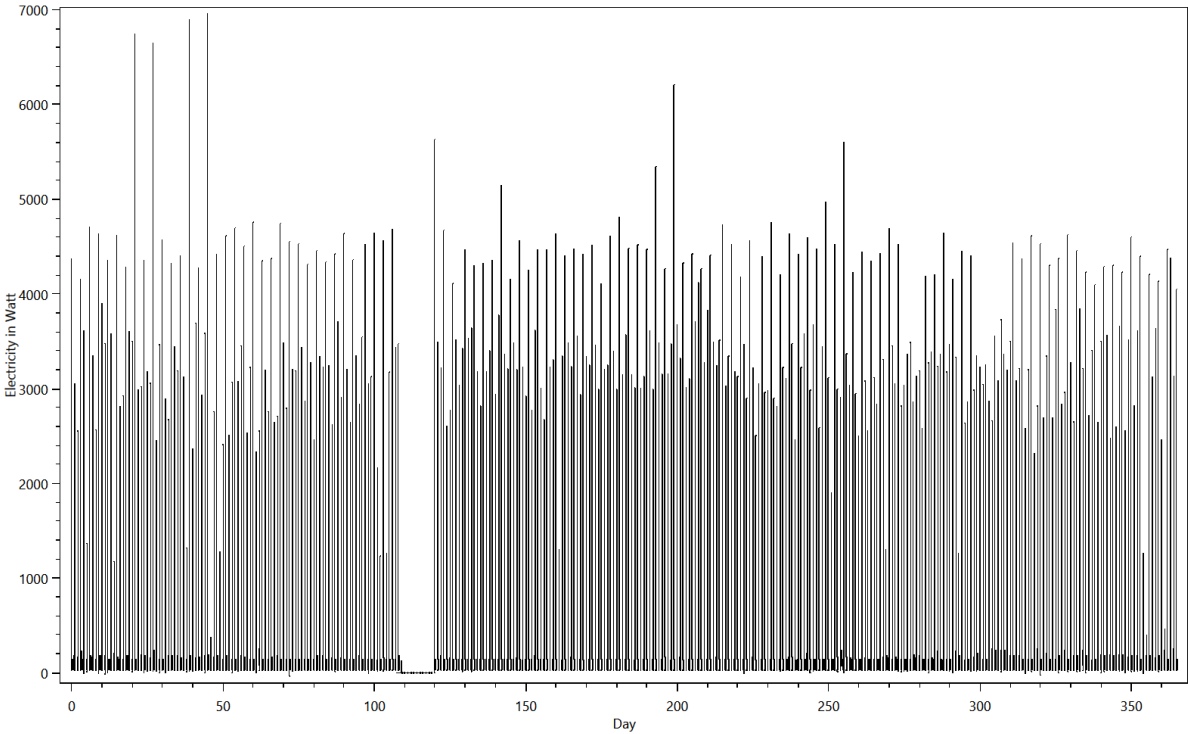
Summed up curve for Cold WaterMinMax from SumProfiles.Cold WaterMinMax.png



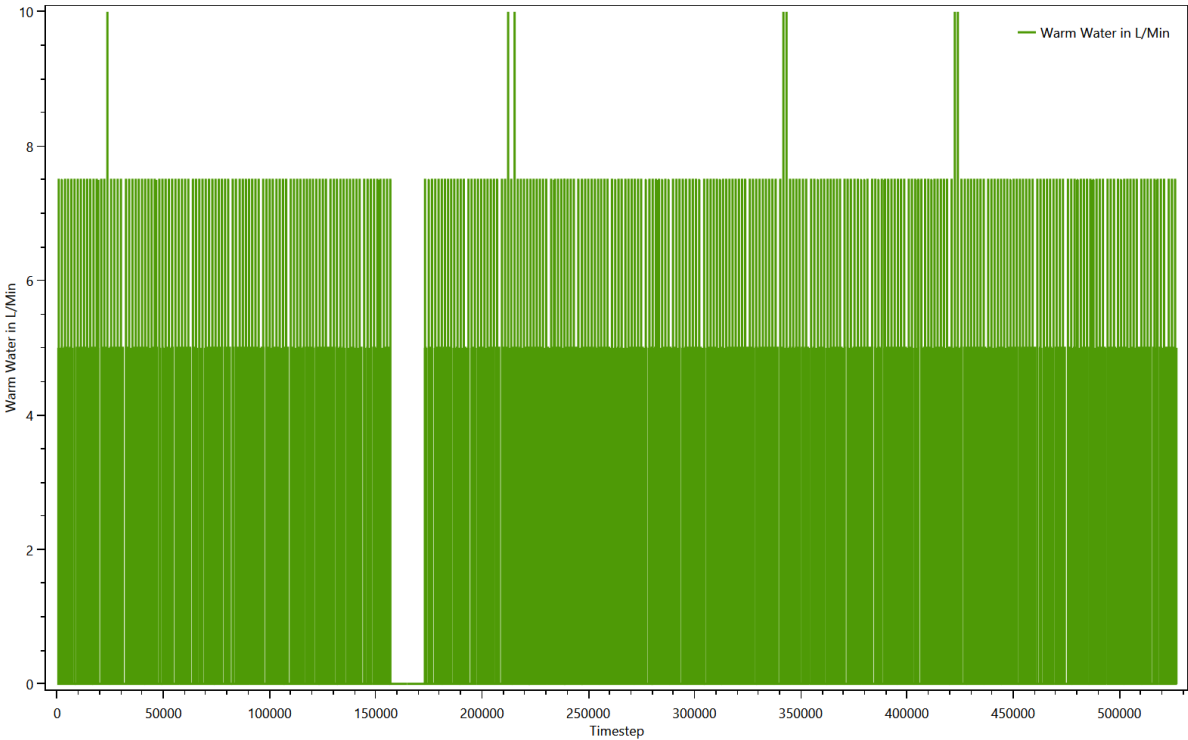
Summed up curve for Electricity from SumProfiles.Electricity.png



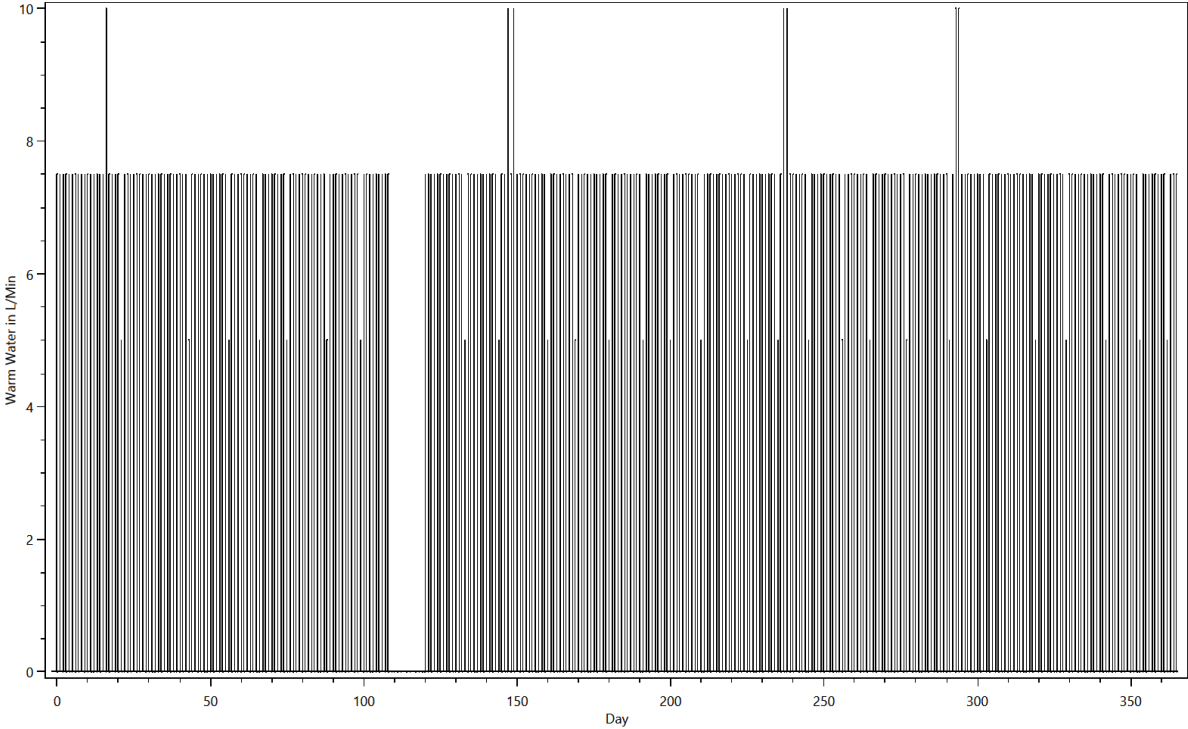
Summed up curve for ElectricityMinMax from SumProfiles.ElectricityMinMax..png



Summed up curve for Warm Water from SumProfiles.Warm Water.png



Summed up curve for Warm WaterMinMax from SumProfiles.Warm WaterMinMax..png



Time Profiles

This is made from the files starting with: Time Profiles

These files show which time profiles were used for each device and how often. The content looks like this:

TimeProfiles.HH0.CHR36 Single woman, 30 - 64 years, without work 0.txt

Device;Load Type;Profile;Number of Activations

Atika LH 2500 G;Electricity;0 h 15 min 100% [Synthetic];122

Bar;None;04 h 0 min 100% [Synthetic];42

Bathroom Light (20W);Electricity;Bath - light [Synthetic for Light Device];366

Bathroom Mirror Light 30W (CFL);Electricity;Bath - light [Synthetic for Light Device];366

Bathroom Sink 5 L/Min;Warm Water;0 h 01 min 100% [Synthetic];873

Bathroom Sink 5 L/Min;Warm Water;0 h 01 min 50% [Synthetic];446

Bed 1;None;10 h 0 min 100% [Synthetic];356

Bedroom Light (60W);Electricity;Bedroom - light [Synthetic for Light Device];225

CD/DVD Player / Phillips HDR3810/31;Electricity;01 h 30 min 100% [Synthetic];119

CD/DVD Player / Phillips HDR3810/31;Electricity;02 h 0 min 100% [Synthetic];47

CD/DVD Player / Phillips HDR3810/31;Electricity;Standby TV / Receiver 1 h 0 min 3% [Synthetic];8532

Canister vacuum cleaner / Siemens VS 06 G 1831;Electricity;0 h 30 min 100% [Synthetic];50

Chair;None;0 h 10 min 100% [Synthetic];512

Children Room Light (100W);Electricity;Children's room - light [Synthetic for Light Device];76

Cleanser;None;01 h 0 min 100% [Synthetic];108

Cloth Drying Rack;None;0 h 20 min 100% [Synthetic];73

Couch;None;01 h 0 min 100% [Synthetic];14

Couch;None;02 h 0 min 100% [Synthetic];531

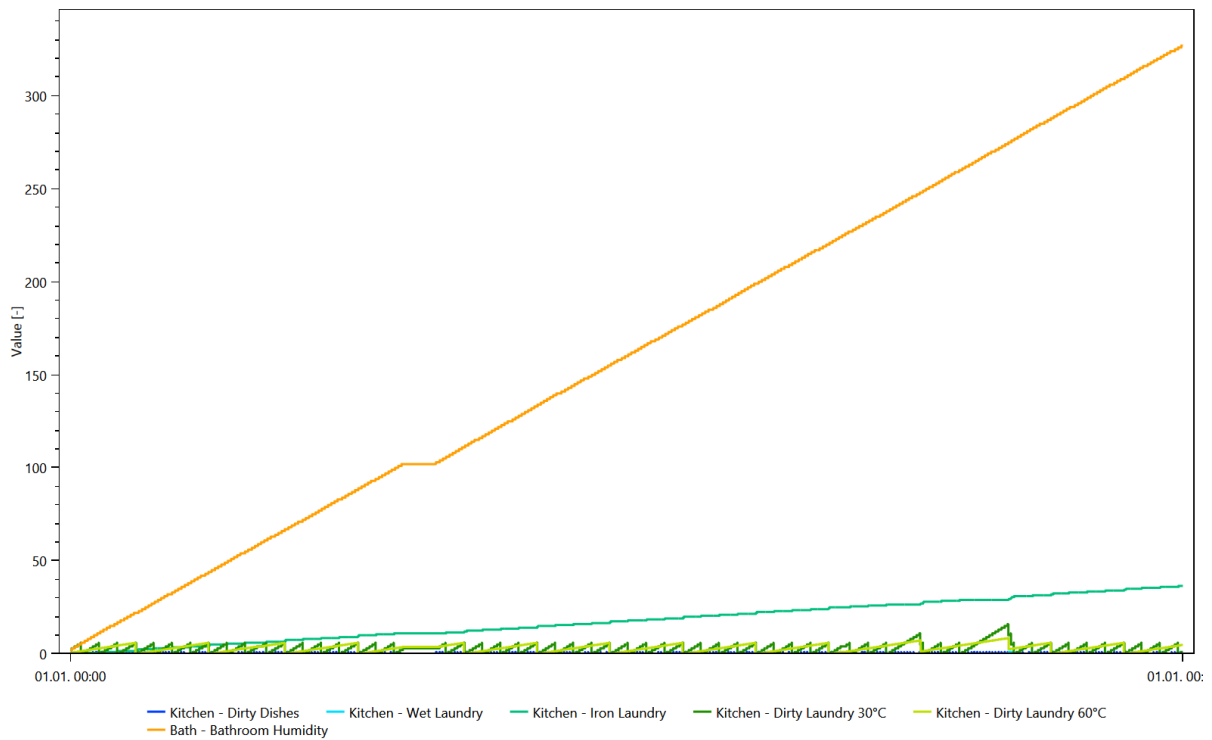
Desk 2;None;0 h 30 min 100% [Synthetic];152

Variables

This is made from the files starting with: Variablelogfile

The variables are used to keep track of things like dirty laundry, dirty dishes and the amount of laundry to iron. They are used to ensure that for example the dishwasher is only turned on if there are sufficient dirty dishes. One chart shows the first 25000 timesteps of the contents of all variables, the other shows the entire time span.

Variables



Variables

